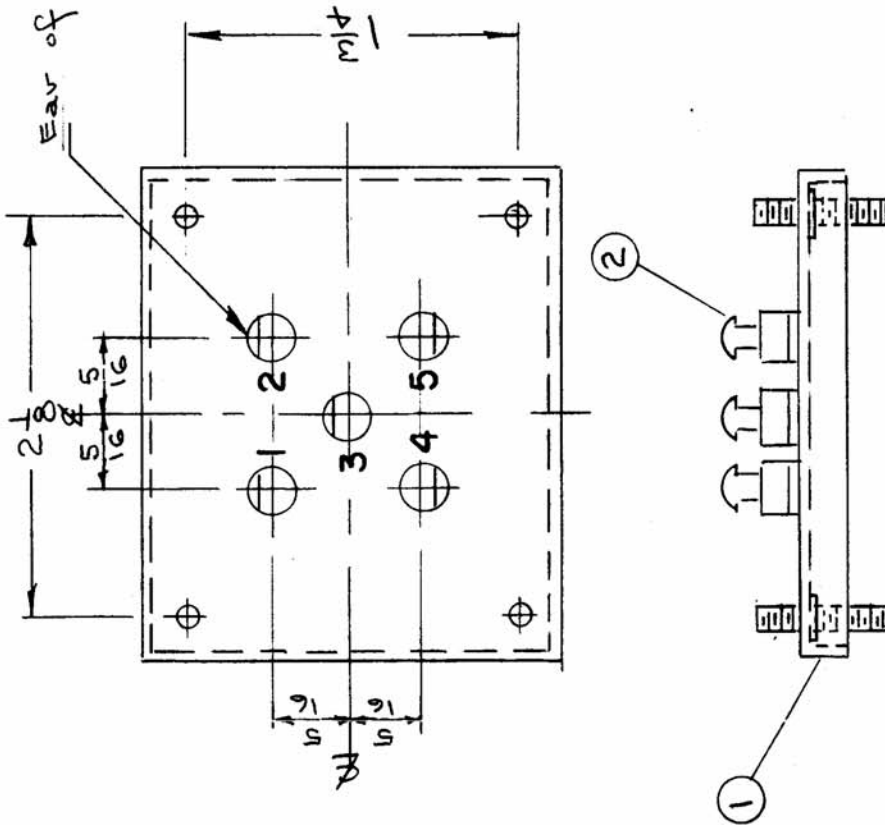


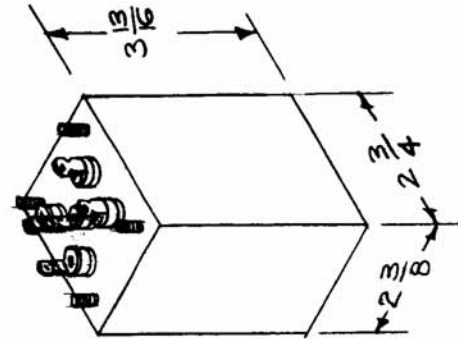
IF IT IS FOUND DESIRABLE TO CHANGE ANY TOLERANCE OR OTHER DETAIL SPECIFIED ON THIS DRAWING NOTIFY THE PURCHASER PROMPTLY.

MAXIMUM ALLOWABLE TOLERANCES HAVE BEEN DETERMINED AND DEVIATIONS WILL BE CAUSE FOR REJECTION. REMOVE ALL BURRS AND SHARP EDGES



NOTE:
Metal Stamp Lettering
AS SHOWN. 1-2-3-4-5,

REF: HELDOR MFG CO.
CAN #104-GA
TERMINALS-#250E



| | | | |
|---------------|--------|-------------|-----------|
| BX-111 | | USED ON | |
| REQ. PER UNIT | MODEL | PROJECT NO. | ASSY. NO. |
| 1 | FD-116 | 170 | A-750 |
| 1 | FD-117 | 170 | A-751 |
| 1 | FX-154 | | A-1424 |
| 1 | FX-155 | | A-1427 |
| | | | DATE |
| | | | 7-17-53 |
| | | | 6-20-57 |
| | | | 6-20-57 |

Ear of Lugs Have

| | | | | | |
|-----------|---|-----------|---------------|--|--------|
| 5 | 2 | TE-134 | LUG, TERMINAL | | |
| 1 | 1 | BX-100-9D | CASE | | |
| REQ. ITEM | | PART NO. | DESCRIPTION | | SYMBOL |

STOCK SIZE
STEEL

THE TECHNICAL MATERIEL CORP.
MAMARONECK, NEW YORK
CASE & COVERS

| | | | |
|--------------------|-------------|-----------------|-----------------|
| TYPE & TEMPER | DRAWN | ELEC. DES. APP. | MECH. DES. APP. |
| HEAT TREAT. SPEC. | CHECKED | FINAL APPROVAL | |
| FINISH & SPEC. NO. | SUPER \$228 | EM 1-228 | |

NOT TINNED
FINISH & SPEC. NO. BX-111 C

| | | | | | | |
|------------|---|---------|---------|--------|---------|-----------|
| ISSUE ITEM | CHANGED FROM | DATE | CN. NO. | DRAFTS | CHECKER | ENG. APP. |
| C 1 | Q/A DIM. CHG'D FROM 2.500 X 2.670 TO CONFORM WITH NEW MIL-T-27A | 1/3/58 | 3 | 16 | HADE | |
| B 1 | CAN DETAIL ADDED - TITLE WAS DISCARD. CAN. | 9/20/57 | 2 | 16 | HADE | |
| A 1 | FINISH WAS ELECTROTIN | 9/15/57 | 1 | 058 | HADE | |

SCALE
TOLERANCES
DEC. DIM. ±
FRAC. DIM. ±
ANGULAR DIM. ±
DRILL, PUNCH, COMMERCIAL STOCK SIZES AND MANUFACTURERS TOLERANCES ARE NOT INCLUDED.