

IF IT IS FOUND DESIRABLE TO CHANGE ANY TOLERANCE OR OTHER DETAIL SPECIFIED ON THIS DRAWING NOTIFY THE PURCHASER PROMPTLY.

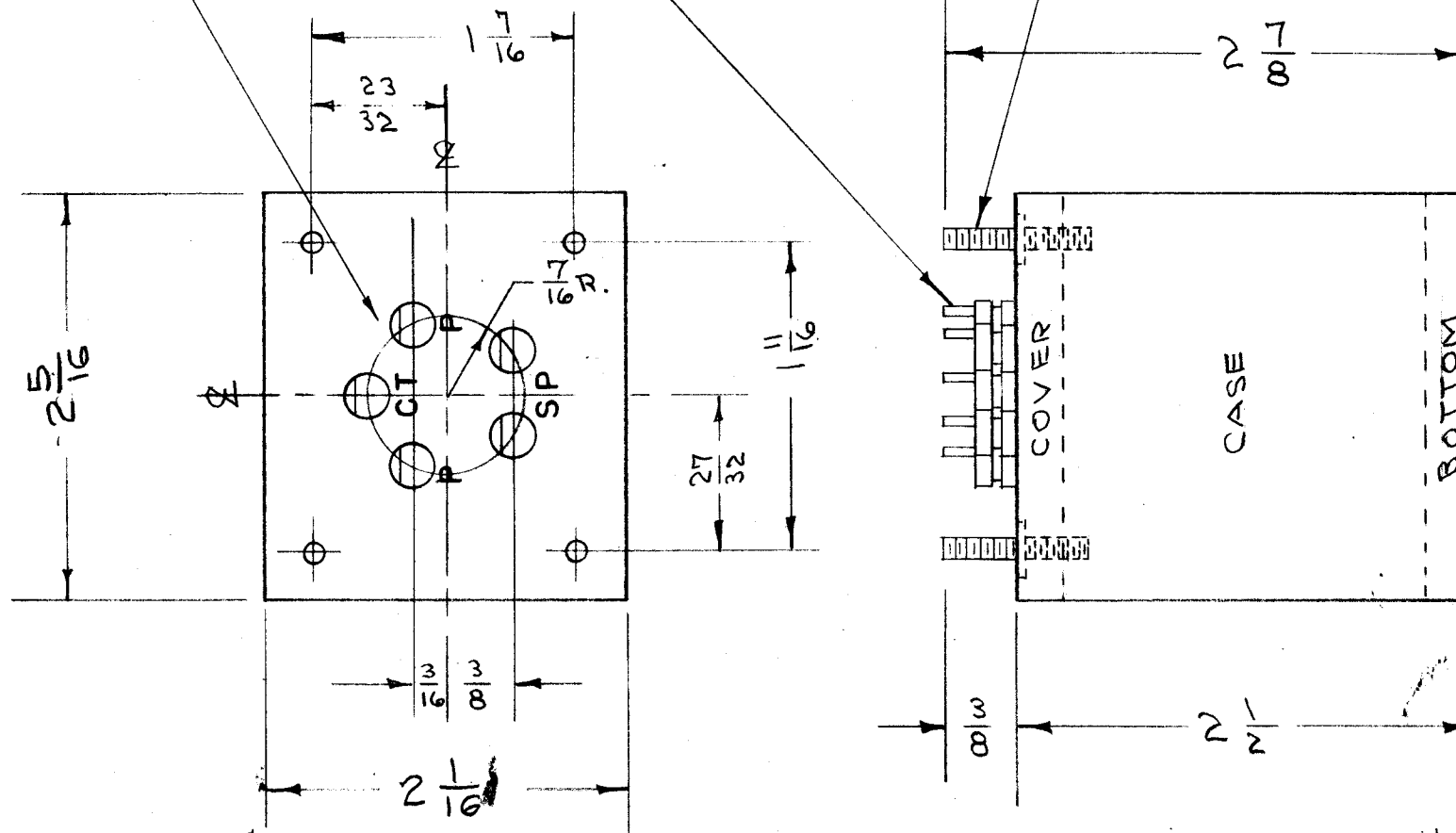
MAXIMUM ALLOWABLE TOLERANCES HAVE BEEN DETERMINED AND DEVIATIONS WILL BE CAUSE FOR REJECTION. REMOVE ALL BURRS AND SHARP EDGES

MOUNTING HOLE $\frac{1}{64}$ (.171) D.
TE-134 5 REQ'D.
(HELDOR No. 250 E)

BX-108 E

METAL STAMP AS SHOWN
CT P P SP

6-32 STUDS-DOUBLE END- 4 REQ.



DIMENSIONS FOR REF. ONLY

NOTICE TO PERSONS RECEIVING THIS DRAWING

THE TECHNICAL MATERIEL CORPORATION claims proprietary right in the material disclosed hereon. This drawing is issued in confidence for engineering information only and may not be reproduced or used to manufacture anything shown hereon without permission from THE TECHNICAL MATERIEL CORPORATION to the user. This drawing is loaned for mutual assistance and is subject to recall at any time.

Property of:

THE TECHNICAL MATERIEL CORPORATION
MAMARONECK, NEW YORK

REF: HELDOR MFG. CO. CAT. No. 108-BB MODIFIED

ISSUE	ITEM	CHANGED FROM	DATE	CN. NO.	DRAFTS	CHECKER	ENG. APP.
E	1	O/A DIM. CHG'D FROM 2.012 X 2.240 TO 2-1/16 X 2-5/16 ACC. TO MIL-T-27A	1/3/58	5	16	JAD	AW
D	1	FINISH WAS ELECTRO TIN	8/31/55	4	16	JAD	AW
C	1	TF-NO DELETED	5/12/55	3	16	JAD	AW
B	1	MOUNTING HOLE DIM. ADDED	4/21/55	2	16	JAD	AW
A	1	STAMPING ADDED TO COVER	1/28/53	1	16	JAD	AW

TOLERANCES		SCALE:
ALL OTHERS	DEC. DIM. \pm FRAC. DIM. \pm ANGULAR DIM. \pm	DRILL, PUNCH, COMMERCIAL STOCK SIZES AND MANUFACTURERS TOLERANCES ARE NOT INCLUDED.

MODEL	PROJECT NO.	ASS'Y. NO.	DATE

REQ.	ITEM	PART NO.	DESCRIPTION	SYMBOL
		.019 - .025	THE TECHNICAL MATERIEL CORP.	
		STEEL	MAMARONECK, NEW YORK	
			CASE, TRANSFORMER	
			C.D.D. 6-16-53	
			DRAWN	ELEC. DES. APP.
			CHECKED	FINAL APPROVAL
			HOT-TINNED	
			FINISH & SPEC. NO.	

BX-108 E