

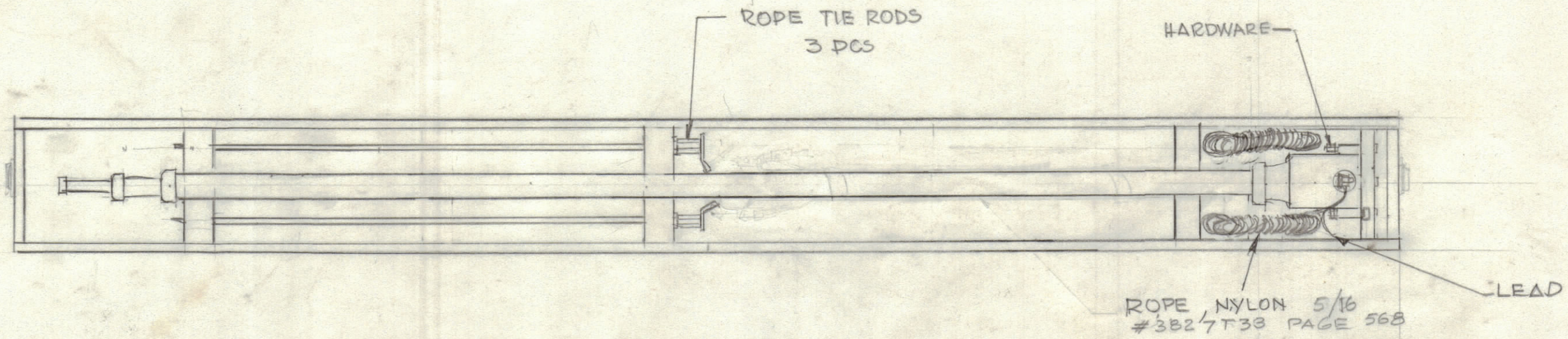
4

3

2

1

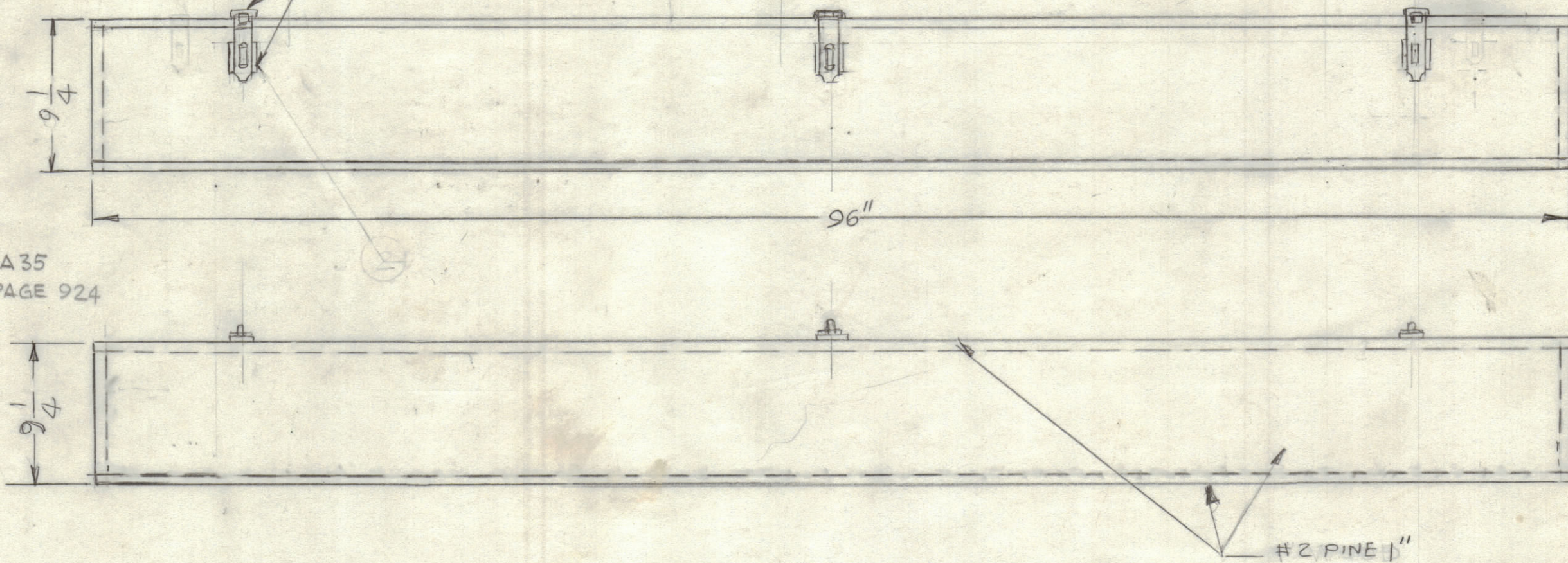
REVISIONS						
ZONE	LTR	DESCRIPTION	DATE	E.M.N.NO	DRAFT	CHKD APPD



1 MASTER-CARR HINGE #1526A51 (PAGE 907) (3REQ'D)

MASTER-CARR HINGE HASP #1543A33 (PAGE 910) (3REQ'D)

3 HANDLE #1647A35 (2REQ'D) PAGE 924



QTY. REQ.	ITEM	PART NO.	DESCRIPTION	SYMBOL

LIST OF MATERIAL

UNLESS OTHERWISE SPECIFIED DIMENSIONS ARE IN INCHES AND INCLUDE CHEMICALLY APPLIED OR PLATED FINISHES

FINAL APPROVAL	DATE
GAB	5/3/91
MECH. DES.	DATE
GDL	5/2/91
ELECT. DES.	DATE
CHECKED	DATE
DRAWN	DATE
GDL	5-2/91

THE TECHNICAL MATERIEL CORP.  
MAMARONECK, NEW YORK

BOX FOR AW-101-B  
AW-100

QTY / UNIT	MODEL USED ON	ASS'Y NO.
APPLICATION		
CODE		

TOLERANCES ON	
DECIMALS	FRACTIONS
.X ± .05	± 1/64
.XX ± .01	ANGLES
.XXX ± .005	± 0° -30'

MATERIAL  
FINISH

SIZE	CODE IDENT.NO.	DWG NO.	ISSUE
C	82679	BP 101	
SCALE		SHEET OF	

NOTICE TO PERSONS RECEIVING THIS DRAWING  
THE TECHNICAL MATERIEL CORPORATION claims proprietary right in the material disclosed hereon. This drawing is issued in confidence for engineering information only and may not be reproduced or used to manufacture anything shown hereon without permission from THE TECHNICAL MATERIEL CORPORATION to the user. This drawing is loaned for mutual assistance and is subject to recall at any time.

4

3

2

1