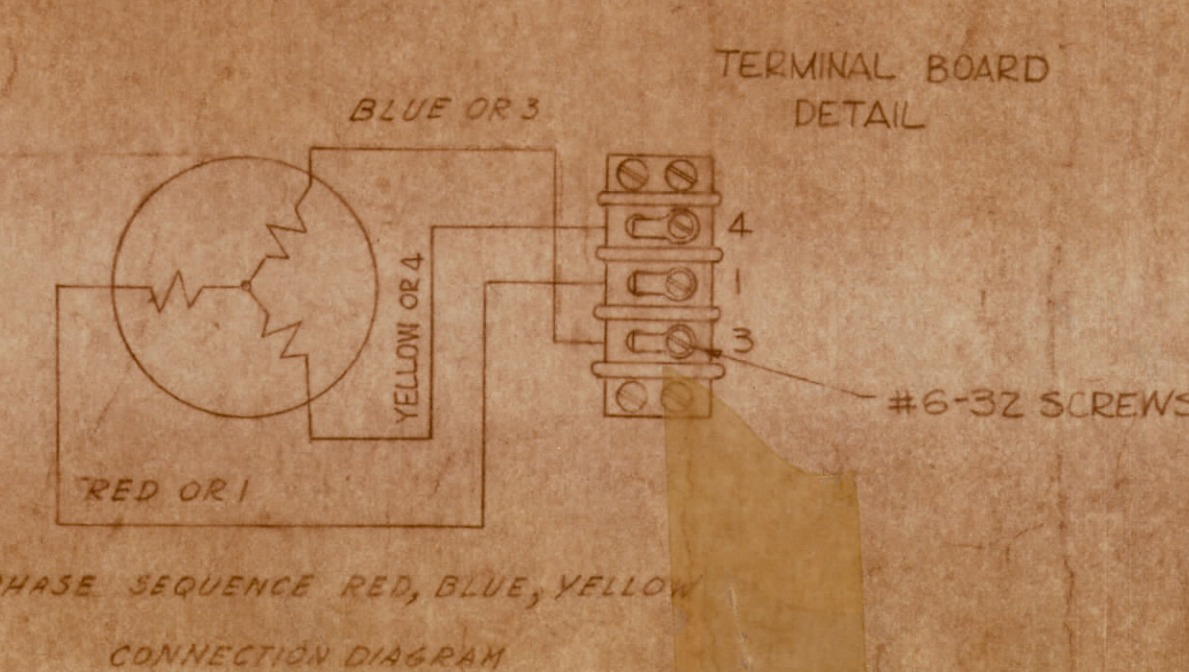
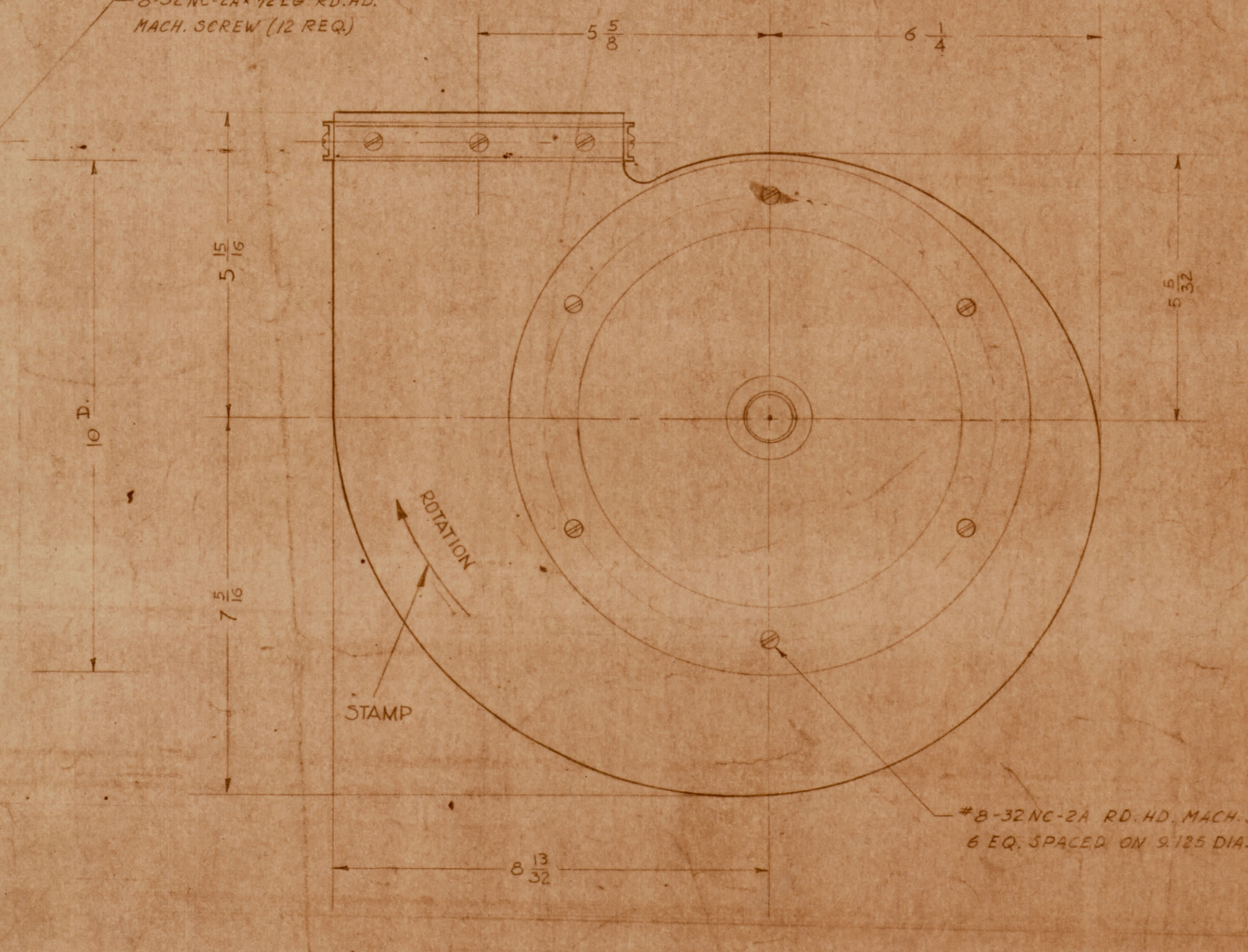
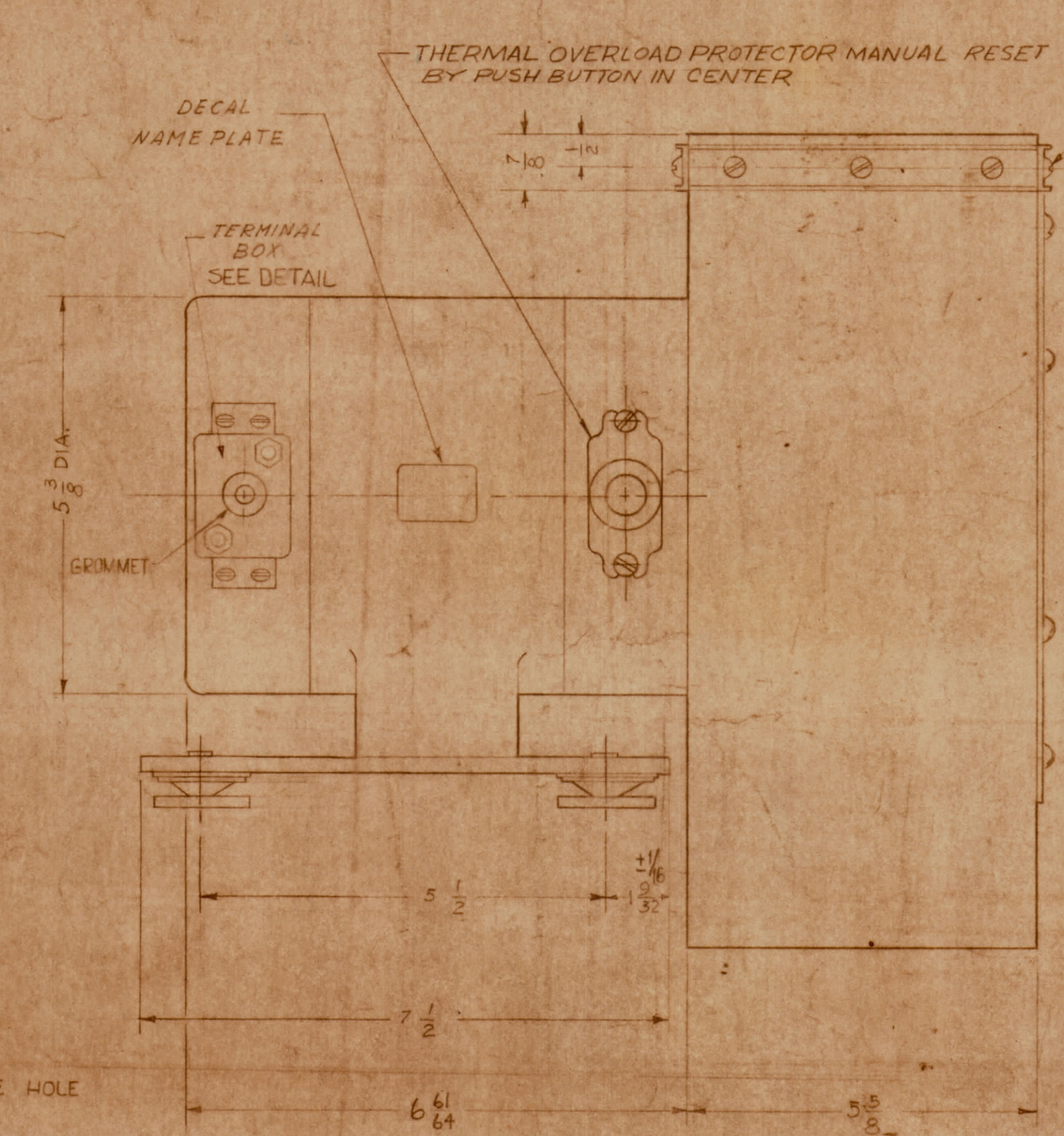
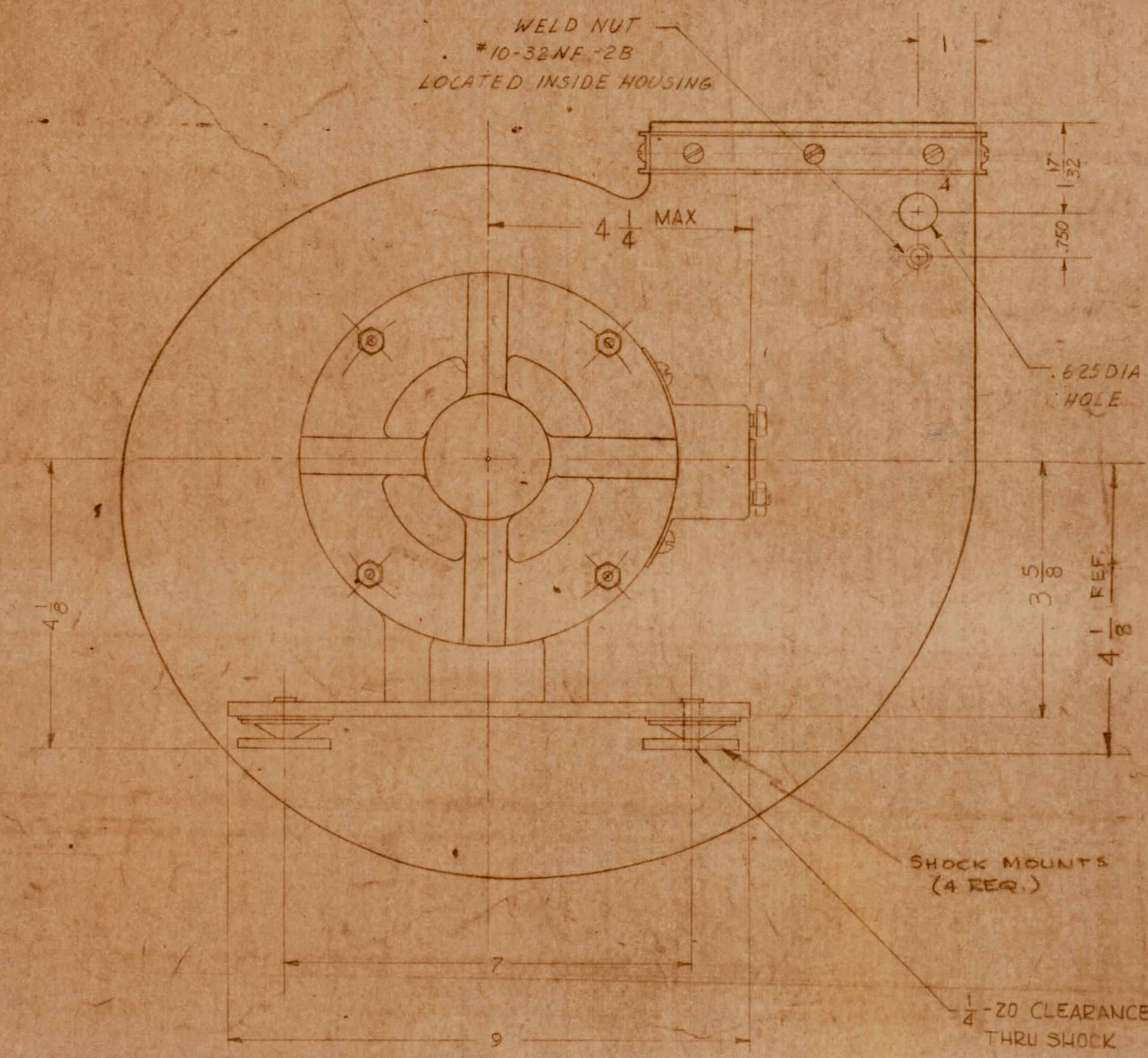


400 CPS  
208 FAC  
(FREE AIR)  
CLASS H  
(FREE AIR)  
REF. ONLY  
1550  
4.5  
49 MAX  
CCW (VIEWED FROM MOTOR END)  
3

**SPECIFICATIONS:**  
VOLTAGE : 208 V  
NOMINAL R.P.M. : 3250  
INSULATION : CLASS H  
FULL LOAD WATT. : 2320  
LINE AMP. : 6.5 REF. ONLY  
MAX. C.F.M. : 1550  
MAX. STATIC PRESSURE AT NO DELIVERY : 4.5  
TOTAL NET. LBS. : 49.1  
ROTATION : CCW (VIEWED FROM MOTOR END)  
PHASE : 3

BLAST : 12 O'CLOCK  
MOTOR FINISH : BLACK  
HOUSING : BLACK  
TEMP. RISE : 45°C  
MFR P/N : BT4530B-0-4

BOTH TROPICALIZED FOR 95% HUMIDITY



TMC PART/NO SHALL BE IN THE FOLLOWING FORM  
BL49-400  
BASIC TMC PT/NO \_\_\_\_\_ CPS

APPROVAL FOR PRODUCTION	9218	MAC	FB
DESIGN CLASSIFIED	7-20-61	18490	60L
50 CPS SPEC. ADDED BY/NO. EX. AD. MFC ET/NO. 50 CPS CURVE ADJUST.	11-1-66	17102	440
SPEC. INSULATION WAS CLASS B, ON 5401-116	1-12-65	13235	82
BT4530B-0-1 WAS BT4530B-0-1, DIM. 1-1/2 X 1-1/2 X 1-1/2	8-23-63	9823	82
THERMAL OVERLOAD PROTECTOR, ADDED.	8-1-61	5031	82
SYM	ZONE	DESCRIPTION	DATE
			CH. NO.
			DRAFTS
			CHECKER
			ENG. APP.
DIMENSIONS ARE IN INCHES		SCALE S401-116	
TOLERANCES ON FRACTIONS ± 1/64		MAXIMUM ALLOWABLE TOLERANCES HAVE BEEN DETERMINED AND ANY DEVIATIONS WILL BE CAUSE FOR REJECTION. REMOVE ALL BURRS & SHARP EDGES	
DECIMALS ± .005		ANGLES ± 1/2°	

REQ. PER UNIT	MODEL	SECTION	ASBY. NO.	DATE
1	5PT-10K	AX-13B		6-14-61
USED ON				
FINISH & SPEC. NO.				
ELEC. DES. APP.				
MECH. DES. APP.				
SHEET OF				

BL-149

BL-149