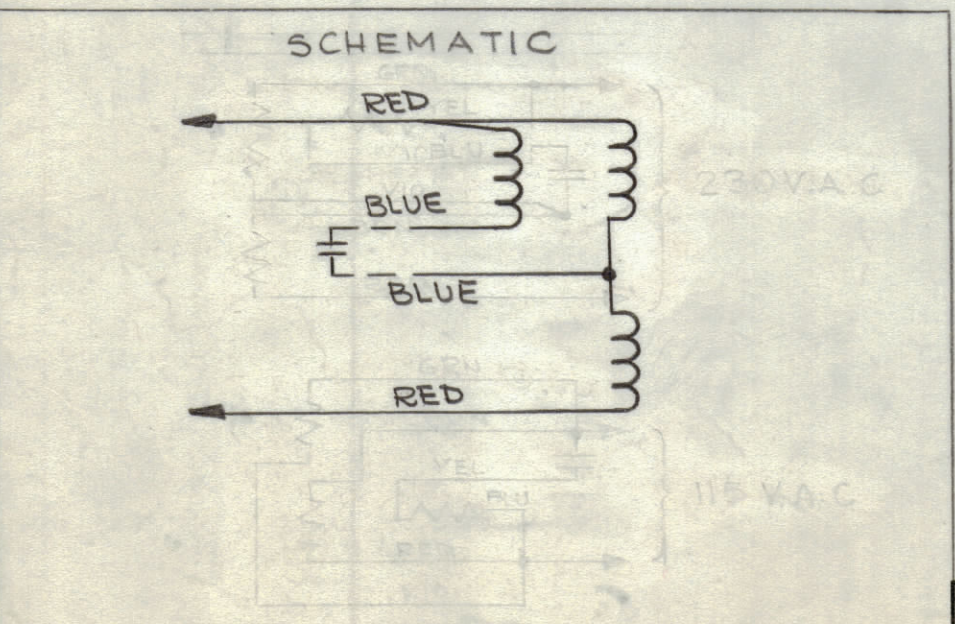
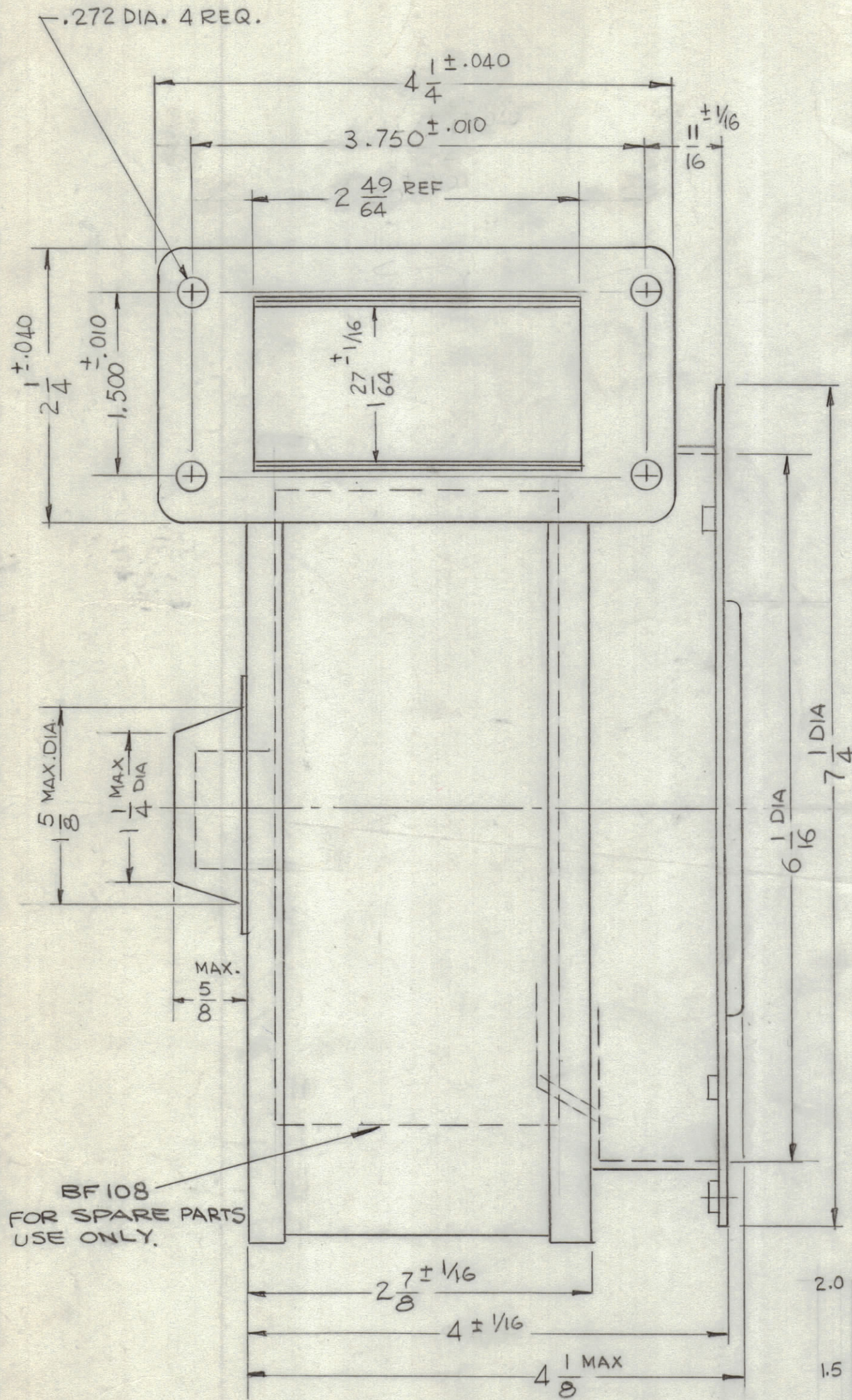


SPECIFICATION -
 VOLTAGE ~ 220V ± 10%, 50/60 CPS, 1PH
 CAPACITANCE ~ 4 MFD
 NOMINAL R.P.M. ~ 3200
 INSULATION ~ 25°C (CLASS B)
 FULL LOAD WATTS ~ 110
 LINE AMP. ~ .55 A
 LOCKED MOTOR AMP. ~ 1.1 A
 MAX STATIC PRESSURE AT NO DELIVERY ~ 2.0
 TOTAL NET LBS. ~ 7.5

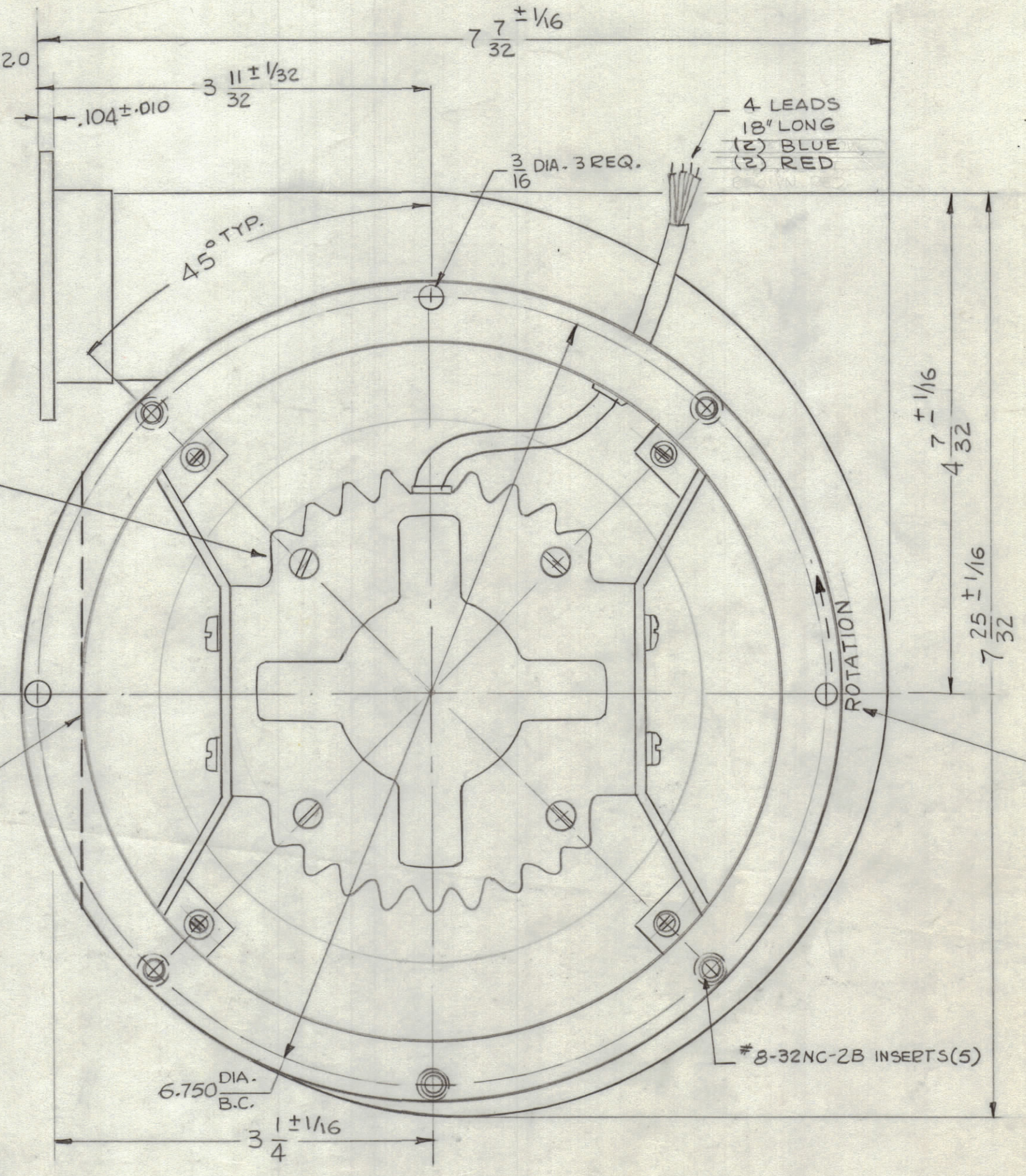
FINISH -
 MOTOR, BLOWER, VENTURI &
 BRACKETS - BLACK PAINT
 BLOWER WHEEL - CAD. PLATE &
 BRONZE IRIDITE

REVISIONS						
ZONE	SYM	DESCRIPTION	DATE	E.M.N. NO.	DRAFT	CHKD
		ORIG. RELEASE	3-10-65			
4	A	SCHEMATIC AND SPECS (ELEC) REVISED PICTORIAL; 4 LEADS WAS 8 (ERROR)	4-15-65	13847		

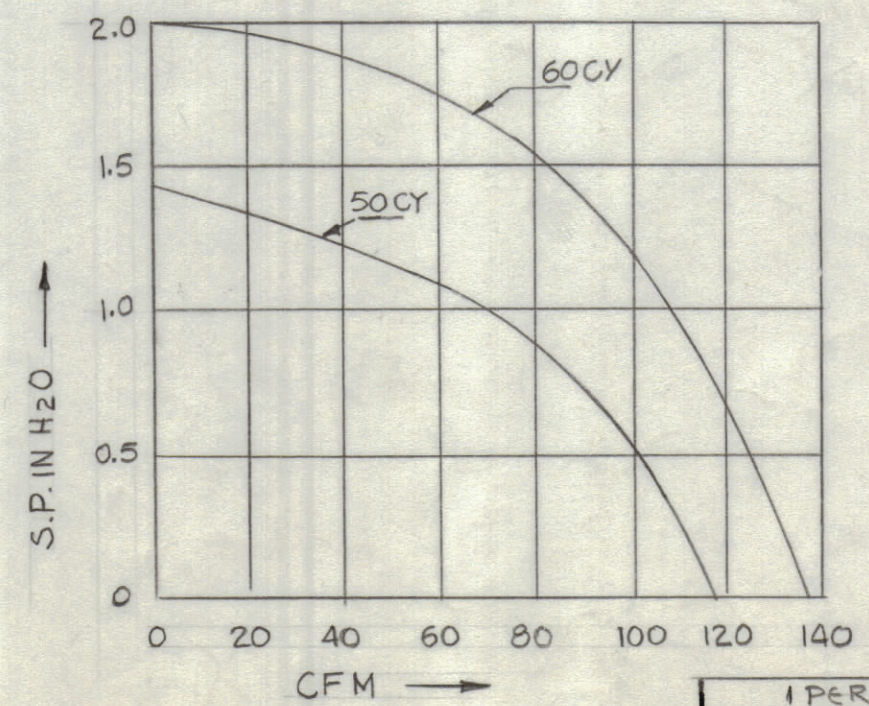


MO 132 F MO 132
 FOR SPARE PARTS
 USE ONLY.

EDGE OF FLANGE
 CUT TANGENT



STAMP WITH
 WHITE GOTHIC
 1/8 HIGH



BL125-1-AS SHOWN

BL125
 A

REQ'D.	ITEM	PART NUMBER	DESCRIPTION	SYMBOL
F. BUDETTI LIST OF MATERIAL				
MATERIAL			THE TECHNICAL MATERIEL CORP. MAMARONECK, NEW YORK	
FINISH			TITLE	
SEE FINISH NOTE			BLOWER, CENTRIFUCAL	
UNLESS OTHERWISE SPECIFIED DIMENSIONS ARE IN INCHES AND INCLUDE CHEMICALLY APPLIED OR PLATED FINISHES			DRAWN	DATE
			G.D.L.	3-9-65
			CHECKED	DATE
			J.P.F.	3/10/65
			ELECT. DES.	DATE
			J.P.F.	
			MECH. DES.	DATE
			A.C.	3/10/65
			SHEET	
			BL125- A	
			REV. LTR.	

Q'TY./UNIT	MODEL USED ON	ASS'Y. NO.
1 PER	HVR-B & HVR-C	
SCALE	CODE	
DO NOT SCALE	C	S 401-116 (BC2914 B-3)A

NOTES

THE CONTENTS OF THIS DRAWING ARE THE EXCLUSIVE PROPERTY OF THE TECHNICAL MATERIEL CORP. ITS UNAUTHORIZED USE OR REPRODUCTION IN WHOLE OR IN PART IS STRICTLY FORBIDDEN.