

CHART 1						
TMC PART NUMBER	MFRS. NUMBER	LAMP TYPE See Chart 2	LENS TYPE	LENS COLOR	INTERNAL RESISTANCE	STYLE
BI-112-1	38-1531	Neon; NE-2E	^{Long} Cylindrical	Red	NONE	1
BI-112-2	45H33K-935	NEON NE-2H	STOVEPIPE	WHT	33K 1/3W	2

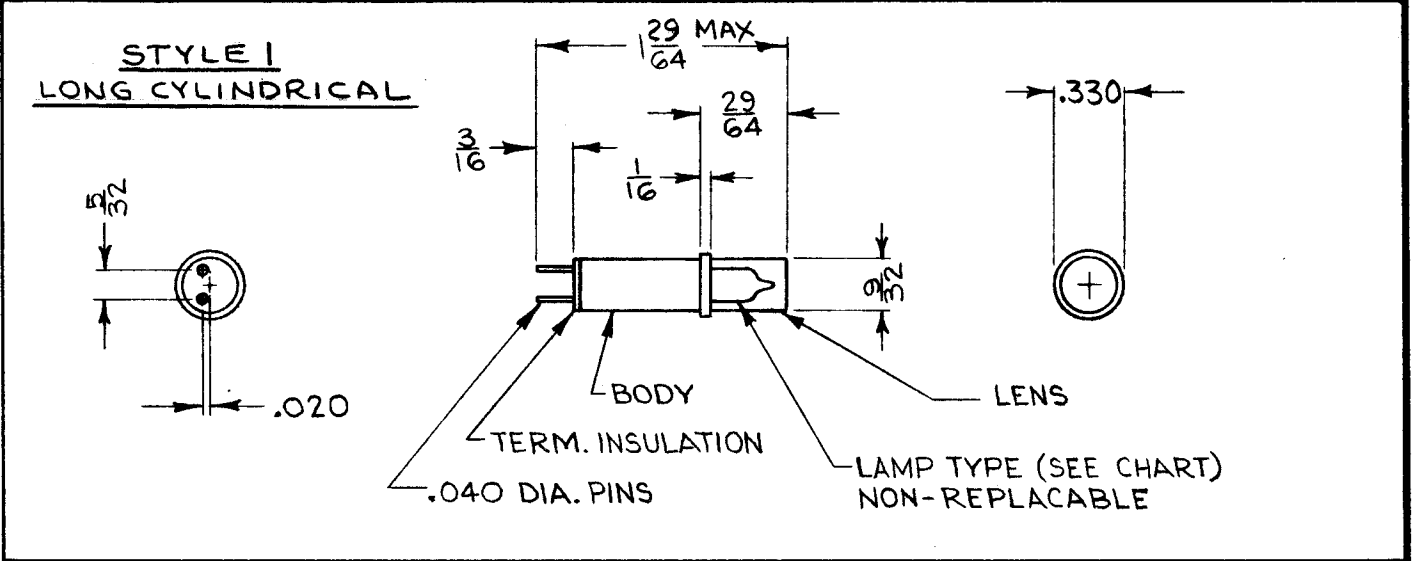
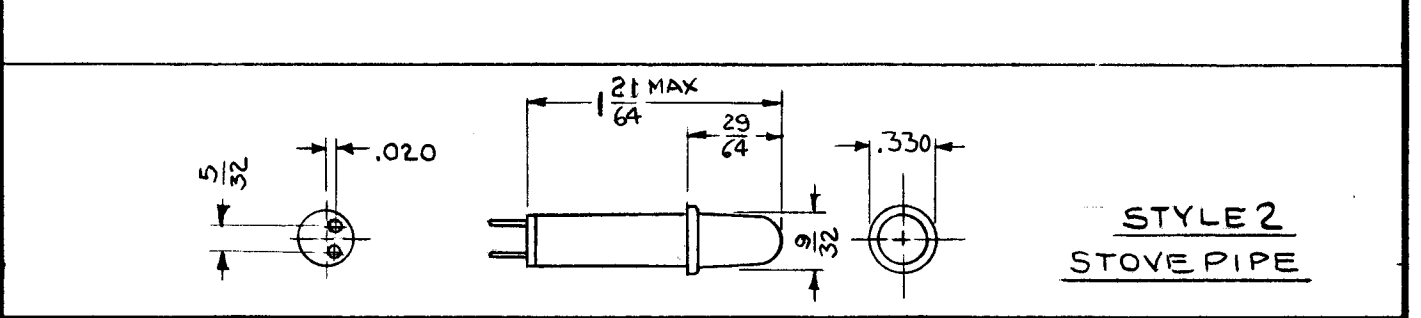
CHART 2 - LAMP SPECIFICATIONS									
LAMP TYPE Per Chart 1	GAS TYPE	WATTS (Nom.)	STARTING VOLT		CIRCUIT VOLT AC or DC	RECOMMENDED EXTERNAL RESISTANCE			
			AC	DC		MEDIUM INTENSITY		BRIGHT INTENSITY	
						RES. (Ohms)	APPROX. LIFE (Hrs.)	RES. (Ohms)	APPROX. LIFE (Hrs.)
NE-2E	Neon	1/15	65	90	100-125	100K	25,000	56K	5000
NE-2H	Neon	1/15	65	90	100-125	33K	25,000	22K	5000

NOTES

1	TTR-10	
Q'TY./UNIT	MODEL USED ON	ASS'Y. NO.
SCALE REF: DIALIGHT	CODE	
THE CONTENTS OF THIS DRAWING ARE THE EXCLUSIVE PROPERTY OF THE TECHNICAL MATERIEL CORP. ITS UNAUTHORIZED USE OR REPRODUCTION IN WHOLE OR IN PART IS STRICTLY FORBIDDEN.		

BI-112

REVISIONS					
SYM	DESCRIPTION	DATE	E.M.N. NO.	DRAFT	CHKD APPD
A	"INTERNAL RESISTANCE" COLUMN ADD. TO CHART I BI-112-2 ADD. TO CHART I, NE-2H ADD. TO CHART II ON NE-2E APPROX. LIFE WAS 7,500, STYLE 2 ADD.	8-24-64	12214	hb	



SPECIFICATIONS

- MATERIALS AND FINISHES:**
 - BODY: ALUMINUM, CLEAR ANODIZE
 - TERMINAL INSULATION: NYLON
 - PINS: STAINLESS STEEL
 - LENS: PLASTIC, UNFROSTED
- LAMP DATA: SEE CHART 2**
- MATING LAMPHOLDER: TMC NO. TS-164 AND TS-174**

REQ'D.	ITEM	PART NUMBER	DESCRIPTION	SYMBOL

KOHN		LIST OF MATERIAL	
MATERIAL		THE TECHNICAL MATERIEL CORP. MAMARONECK, NEW YORK	
FINISH		TITLE LAMP, GLOW, CARTRIDGE TYPE	
UNLESS OTHERWISE SPECIFIED DIMENSIONS ARE IN INCHES AND INCLUDE CHEMICALLY APPLIED OR PLATED FINISHES		DRAWN: <i>A. Chavault</i> CHECKED: <i>HDO</i> ELECT. DES: <i>R. KOHN</i> MECH. DES: <i>hb</i>	DATE: 4-10-63 DATE: 4-22-63 DATE: 4-22-62 DATE: 4-22-63
DECIMALS .X ± .05 .XX ± .01 .XXX ± .005		TOLERANCES ANGLES ± 1/64 ± 0° 30'	
		FINAL APPROVAL: <i>BP</i> DATE: BI-112 SHEET: REV. LTR.: A	