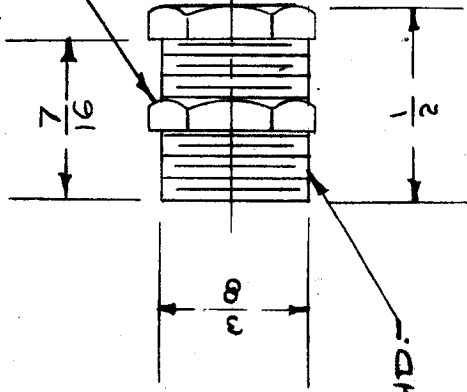


IF IT IS FOUND DESIRABLE TO CHANGE ANY TOLERANCE OR OTHER DETAIL SPECIFIED ON THIS DRAWING NOTIFY THE PURCHASER PROMPTLY.

MAXIMUM ALLOWABLE TOLERANCES HAVE BEEN DETERMINED AND DEVIATIONS WILL BE CAUSE FOR REJECTION. REMOVE ALL BURRS AND SHARP EDGES

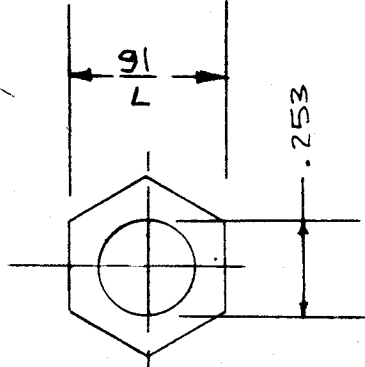
TO BE SUPPLIED BY MFG. R.
ONE HEX NUT, 3/8-32 THREAD, 3/82. THIS
TAG ACROSS FLATS

IMC EQUIV. NTH 3732 B N16 - NUT, HEX



3/8 - 32 THD.

DIMENSIONS SHOWN ARE AFTER PLATING.



DIMENSIONS FOR REF. ONLY

STANDARD

BB-10

USED ON	
AMT. REQUIRED	PROJECT NO.
2	140
DMK-4	A-153
XFK	A-685
TAC-1	
	9-20-57

ISSUE	ITEM	CHANGED FROM	DATE	CN. NO.	DRAFTS CHECKING	APP.
B	4	.253 WAS .251/252	12/29/54	2	16	JH
	3	THE INFO. ADDED				
	2	7/16 BUSHING DIM. ADDED				
	1	7/16 ACROSS FLATS WAS 9/16				
A	2	FINISH ADDED	9/16/54	1	16	JH
	1	25/252 WAS 250				

SCALE TWICE SIZE
DRILL, PUNCH, COMMERCIAL STOCK
SIZES AND MANUFACTURERS
TOLERANCES ARE NOT INCLUDED.

ALL DEC. DIM. ±
OTHERS FRAC. DIM. ± 1/64
ANGULAR DIM. ±

REQ. ITEM	PART NO.	DESCRIPTION
		THE TECHNICAL DEPARTMENT MANHATTAN, NEW YORK
		BRASS BEARING, BARNEL
		STOCK SIZE
		WEIGHT PER PC.
		TYPE & TEMPER
		HEAT TREAT. SPEC.
		FINISH

REF.	H. H. SMITH INC.	CAD.
		9-15-57
		DRAWN
		BB-101

IF IT IS FOUND DESIRABLE TO CHANGE ANY TOLERANCE OR OTHER DETAIL SPECIFIED ON THIS DRAWING NOTIFY THE PURCHASER PROMPTLY.

MAXIMUM ALLOWABLE TOLERANCES HAVE BEEN DETERMINED AND DEVIATIONS WILL BE CAUSE FOR REJECTION. REMOVE ALL BURRS AND SHARP EDGES

STANDARD DRAWING

BB-102

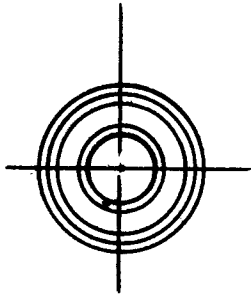
TWR-115 USED ON

MODEL PROJECT NO. ASSY. NO. DATE

NOTICE TO PERSONS RECEIVING THIS DRAWING

THE TECHNICAL MATERIEL CORPORATION claims proprietary right in the material disclosed hereon. This drawing is issued in confidence for engineering information only and may not be re-used or used to manufacture anything shown hereon without permission from THE TECHNICAL MATERIEL CORPORATION to the user. This drawing is loaned for mutual assistance and is subject to recall at any time.

Property of:
THE TECHNICAL MATERIEL CORPORATION
 MAMARONECK, NEW YORK



REQ. ITEM	PART NO.	DESCRIPTION	SYMBOL
	#	TMC (Canada) LIMITED OTTAWA	
STEEL	#	BEARING	
MATERIAL HIGH CARBON CHROME	WEIGHT PER PC.	TAPE WINDING	
TYPE & TEMPER		PT 4/5/55	
HEAT TREAT. SPEC.		DRAWN	ELEC. DES. APP. MECH. DES. APP.
FINISH & SPEC. NO.		CHECKED	FINAL APPROVAL
			BB-102

IF IT IS FOUND DESIRABLE TO CHANGE ANY TOLERANCE OR OTHER DETAIL SPECIFIED ON THIS DRAWING NOTIFY THE PURCHASER PROMPTLY.

MAXIMUM ALLOWABLE TOLERANCES HAVE BEEN DETERMINED AND DEVIATIONS WILL BE CAUSE FOR REJECTION. REMOVE ALL BURRS AND SHARP EDGES

NOTICE TO PERSONS RECEIVING THIS DRAWING

THE TECHNICAL MATERIEL CORPORATION claims proprietary right in the material disclosed herein. This drawing is issued in confidence for engineering information only and may not be reproduced or used to manufacture anything shown hereon without permission from THE TECHNICAL MATERIEL CORPORATION to the user. This drawing is loaned for your assistance and is subject to recall at any time.

Property of:

THE TECHNICAL MATERIEL CORPORATION
MAMARONECK, NEW YORK



STANDARD DRAWING

BB-103

TWR-116 USED ON

DATE

ASS'Y. NO.

PROJECT NO.

MODEL

T.M.C. NO. DIA.

BB-103-1 .125

ISSUE ITEM	CHANGED FROM	DATE	CN. NO.	DRAFTS	CHECKER	ENG. APP.
TOLERANCES						
SCALE 4" TO 1"						
ALL DEC. DIM. ±	DRILL, PUNCH, COMMERCIAL STOCK					
OTHERS FRAC. DIM. ±	SIZES AND MANUFACTURERS					
ANGULAR DIM. ±	TOLERANCES ARE NOT INCLUDED.					

REQ. ITEM	PART NO.	DESCRIPTION	SYMBOL
—H—	—H—	TMC (Canada) LIMITED	
STOCK SIZE	—H—	OTTAWA	
STEEL	—H—	BALL-BEARING	
MATERIAL	—H—	TAPE WINDING	
WEIGHT PER PC.	—H—	BT 4/5/55	
TYPE & TEMPER	—H—	DRAWN	ELEC. DES. APP.
HEAT TREAT. SPEC.	—H—	CHECKED	MECH. DES. APP.
FINISH & SPEC. NO.	—H—	FINAL APPROVAL	
		BB-103	

STANDARD DRAWING

IF IT IS FOUND DESIRABLE TO CHANGE ANY TOLERANCE OR OTHER DETAIL SPECIFIED ON THIS DRAWING NOTIFY THE PURCHASER PROMPTLY.

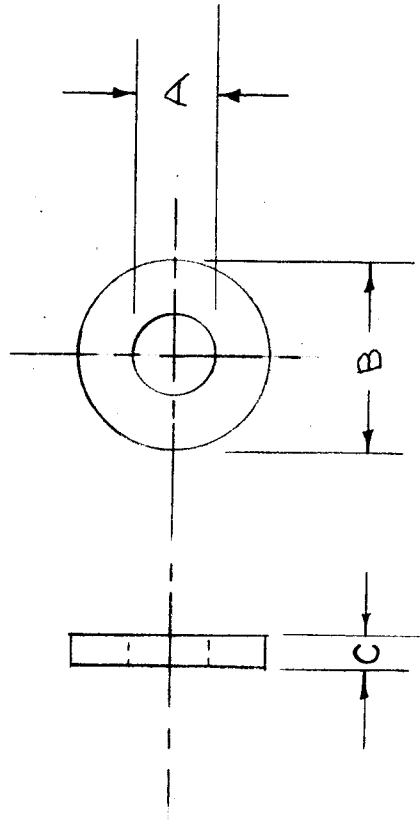
MAXIMUM ALLOWABLE TOLERANCES HAVE BEEN DETERMINED AND DEVIATIONS WILL BE CAUSE FOR REJECTION. REMOVE ALL BURRS AND SHARP EDGES

BB-106

USED ON

MODEL	PROJECT NO.	ASSY. NO.	DATE
-------	-------------	-----------	------

TMC NO.	CAT. NO. BOSTON	A		B		C	CAT. NO. GEN'L.
		ACTUAL SIZE	NOM. SIZE	ACTUAL SIZE	NOM. SIZE		
BB-106-1	TB-410	.255	1/4	.625	5/8	1/16	T400
BB-106-2	TB-512	.315	5/16	.750	3/4	1/16	
BB-106-3	TB-612	.390	3/8	.750	3/4	1/32	
BB-106-4	TB-812	.507	1/2	.750	3/4	1/16	
BB-106-5	TB-814	.505	1/2	.875	7/8	3/16	
BB-106-6	TB-816	.510	1/2	1.000	1	1/16	
BB-106-7	TB-920	.565	9/16	1.250	1 1/4	1/8	
BB-106-8	TB-1016	.628	5/8	1.000	1	1/8	
BB-106-9	TB-1019	.627	5/8	1.187	1 3/16	3/32	
BB-106-10	TB-1225	.765	3/4	1.562	1 9/16	3/32	
BB-106-11	TB-1228	.765	3/4	1.750	1 3/4	1/8	
BB-106-12	TB-1424	.890	7/8	1.500	1 1/2	1/8	
BB-106-13	TB-1434	.890	7/8	2.125	2 1/8	1/8	
BB-106-14	TB-1624	1.003	1	1.504	1 1/2	1/8	
BB-106-15	TB-1632	1.016	1	2.000	2	1/8	
BB-106-16	TB-2028	1.253	1 1/4	1.750	1 3/4	1/8	
BB-106-17	TB-2456	1.510	1 1/2	3.500	3 1/2	3/16	
BB-106-18	SPECIAL	1.510	1 1/2	3.000	3	3/16	



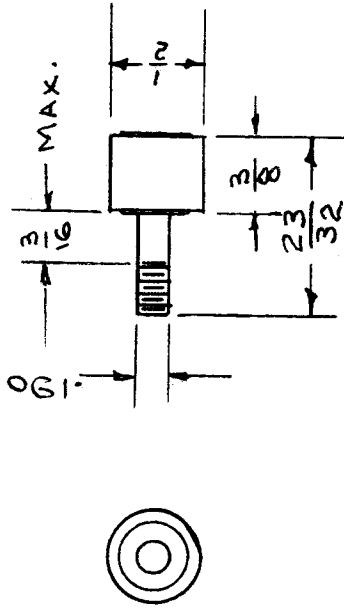
REF: BOSTON GEAR CO. TB-410
GEN. MOTORS CORP T-400

REQ. ITEM	PART NO.	DESCRIPTION	SYMBOL
		THE TECHNICAL MATERIEL CORP. MAMARONECK, NEW YORK	
		BRONZE	
		BEARING, THRUST	
		MATERIAL	
		WEIGHT PER PC.	
		TYPE & TEMPER	
		HEAT TREAT. SPEC.	
		FINISH & SPEC. NO.	

ISSUE ITEM	CHANGED FROM	DATE	CN. NO.	DRAFTS	CHECKER	ENG. APP.
A 1	BB-106-18 ADDED	10/163	10156			
TOLERANCES						
SCALE ---						
DEC. DIM. ± FRAC. DIM. ± ANGULAR DIM. ±						
DRILL, PUNCH, COMMERCIAL STOCK SIZES AND MANUFACTURERS TOLERANCES ARE NOT INCLUDED.						

IF IT IS FOUND DESIRABLE TO CHANGE ANY TOLERANCE OR OTHER DETAIL SPECIFIED ON THIS DRAWING NOTIFY THE PURCHASER PROMPTLY.

MAXIMUM ALLOWABLE TOLERANCES HAVE BEEN DETERMINED AND DEVIATIONS WILL BE CAUSE FOR REJECTION. REMOVE ALL BURRS AND SHARP EDGES



NOTICE TO PERSONS RECEIVING THIS DRAWING

THE TECHNICAL MATERIEL CORPORATION claims proprietary right in the material disclosed hereon. This drawing is issued in confidence for engineering information only and may not be reproduced or used to manufacture anything shown hereon without permission from THE TECHNICAL MATERIEL CORPORATION to the user. This drawing is loaned for mutual assistance and is subject to recall at any time.

Property of:

THE TECHNICAL MATERIEL CORPORATION
MAMARONECK, NEW YORK

DIM. FOR REF. ONLY

REF: TORRINGTON CO. CAT.# CR-8 (MODIFIED AS SHOWN)

REQ. ITEM		PART NO.		DESCRIPTION		SYMBOL	
		FF		THE TECHNICAL MATERIEL CORP.			
STOCK SIZE		FF		MAMARONECK, NEW YORK			
MATERIAL		FF		BEARING, CAM FOLLOWER			
WEIGHT PER PC.		FF					
TYPE & TEMPER		FF		DRAWN		MECH. DES. APP.	
HEAT TREAT. SPEC.		FF		CHECKED		FINAL APPROVAL	
FINISH & SPEC. NO.		FF		A J T		ELEC. DES. APP.	
				A J T		MECH. DES. APP.	
				A J T		MECH. DES. APP.	
				A J T		MECH. DES. APP.	

ISSUE ITEM	CHANGED FROM	DATE	CN. NO.	DRAFTS	CHECKER	ENG. APP.
C 1	23/32 was 3/4, .190 ADDED	1/2/59				
B 2	DIMENSIONS CHANGED					
B 1	Supersedes BB-112	10/24/58				
A 1	DIMENSIONS ADDED	8/16/54				

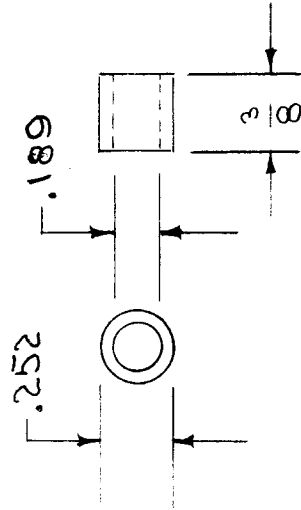
TOLERANCES		SCALE FULL	
ALL DEC. DIM. ±	DRILL, PUNCH, COMMERCIAL STOCK		
OTHERS FRAC. DIM. ±	SIZES AND MANUFACTURERS		
ANGULAR DIM. ±	TOLERANCES ARE NOT INCLUDED.		

BB-107

QUAN. PER UNIT	MODEL	PROJECT NO.	ASSY. NO.	DATE
1	VOX	101	A-583	8/13/54
1	PMD-1	285	A-583	8/16/54
1	VOX-1			2-1-55
1	RTF-2			11-10-58

IF IT IS FOUND DESIRABLE TO CHANGE ANY TOLERANCE OR OTHER DETAIL SPECIFIED ON THIS DRAWING NOTIFY THE PURCHASER PROMPTLY.

MAXIMUM ALLOWABLE TOLERANCES HAVE BEEN DETERMINED AND DEVIATIONS WILL BE CAUSE FOR REJECTION. REMOVE ALL BURRS AND SHARP EDGES



BB-110

REQ. PER UNIT

USED ON

DATE

ASSY. NO.

PROJECT NO.

MODEL

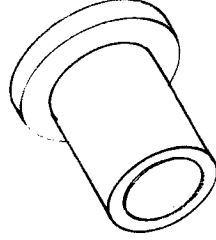
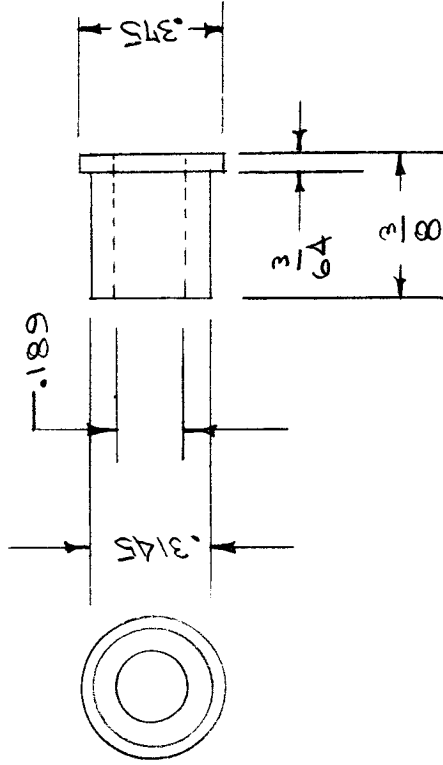
REF: BOSTON GEAR WORKS - CAT. NO. B-34-3

REQ. ITEM	PART NO.	DESCRIPTION	SYMBOL
		THE TECHNICAL MATERIEL CORP. MAMARONECK, NEW YORK	
STOCK SIZE			
BRONZE		BEARING, PLAIN CYLIN-	
MATERIAL	WEIGHT PER PC.	DRICAL TYPE	
TYPE & TEMPER		C.D.D. 6-18-5A	WDE
HEAT TREAT. SPEC.		DRAWN	ELEC. DES. APP.
		CHECKED	MECH. DES. APP.
FINISH & SPEC. NO.			FINAL APPROVAL
			BB-110

ISSUE ITEM	CHANGED FROM	DATE	CN. NO.	DRAFTS	CHECKER	ENG. APP.
TOLERANCES						
DEC. DIM. \pm	SCALE $\frac{1}{1}$					
FRAC. DIM. \pm	DRILL, PUNCH, COMMERCIAL STOCK					
ANGULAR DIM. \pm	SIZES AND MANUFACTURERS					
	TOLERANCES ARE NOT INCLUDED.					

IF IT IS FOUND DESIRABLE TO CHANGE ANY TOLERANCE OR OTHER DETAIL SPECIFIED ON THIS DRAWING NOTIFY THE PURCHASER PROMPTLY.

MAXIMUM ALLOWABLE TOLERANCES HAVE BEEN DETERMINED AND DEVIATIONS WILL BE CAUSE FOR REJECTION. REMOVE ALL BURRS AND SHARP EDGES



BOSTON GEAR WKS. CAT. NO. FB-35-3

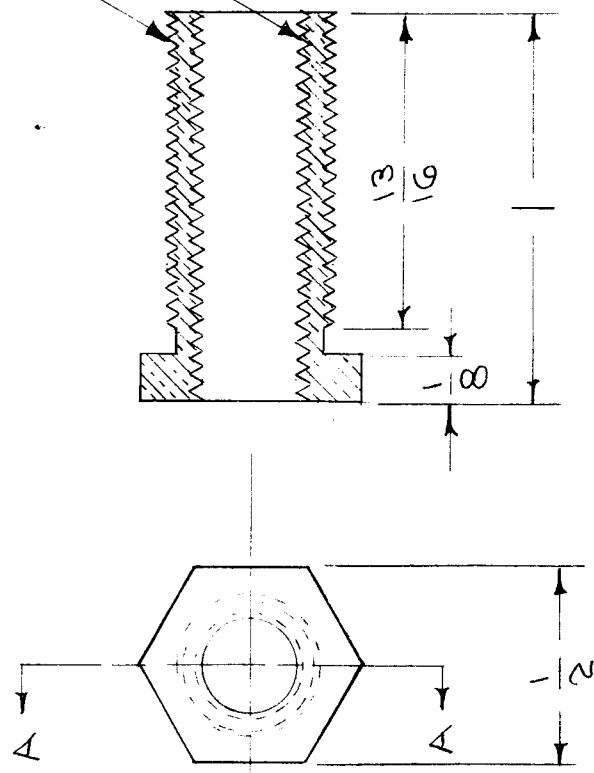
REQ. ITEM		CHANGED FROM	DATE	CN. NO.	DRAFTS	CHECKER	ENG. APP.
ISSUE		TOLERANCES					
ALL OTHERS		DEC. DIM. \pm FRAC. DIM. \pm ANGULAR DIM. \pm					
TYPE & TEMPER		SCALE					
HEAT TREAT. SPEC.		DRILL, PUNCH, COMMERCIAL STOCK SIZES AND MANUFACTURERS TOLERANCES ARE NOT INCLUDED.					
FINISH & SPEC. NO.		BB-111 BB-111					
REQ. PER UNIT		1 1 1					
MODEL		P.M.O. 285 V.O.X. 2 R.T.F.					
PROJECT NO.		7-30-54 6-7-55 2-3-56					
ASS'Y. NO.		7-30-54 6-7-55 2-3-56					
DATE		7-30-54 6-7-55 2-3-56					
REQ. ITEM		PART NO. STOCK SIZE MATERIAL WEIGHT PER PC.					
DESCRIPTION		THE TECHNICAL MATERIEL CORP. MAMARONECK, NEW YORK BEARING, FLANGED TYPE					
SYMBOL		C.D.D. DRAWN CHECKED FINAL APPROVAL					
ELEC. DES. APP.		MECH. DES. APP.					

REQ. PER UNIT	MODEL	USED ON
	RTF	ASSY. NO.
1	RTF-2	DATE
1	Pow/AMP	B-23-56

BB-114

3/8 x 32 CL. 2

1/4 x 20 CL. 2



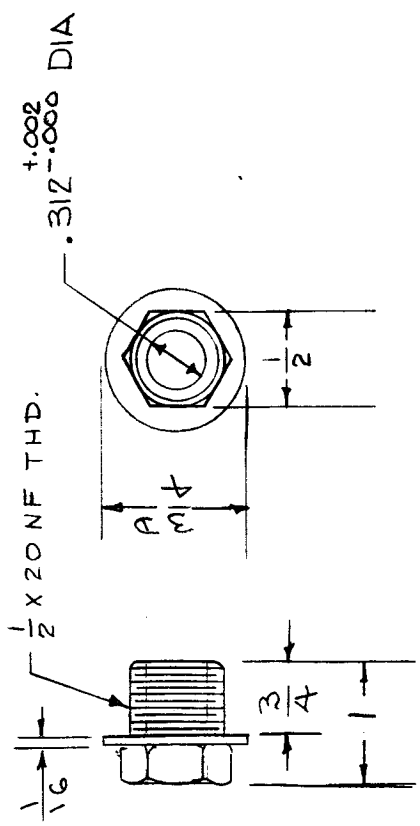
REQ. ITEM	PART NO.	DESCRIPTION	SYMBOL
		THE TECHNICAL MATERIEL CORP. MAMARONECK. NEW YORK	
	STOCK SIZE	BUSHING, NEUTRALIZING	
	MATERIAL	P/A	RTF
FREE TURNING	DATE	8/23/56	WJC
TYPE & TEMPER	CHECKER	JA	FINAL APPROVAL
HEAT TREAT. SPEC.	DRAFTS		
SILVER PLATE	DATE		
.0002	CH. NO.		
FINISH & SPEC. NO.	ENG. APP.		

TOLERANCES
 DEC. DIM. ±
 FRAC. DIM. ±
 ANGULAR DIM. ±

SCALE:
 MAXIMUM ALLOWABLE TOLERANCES HAVE BEEN DETERMINED AND ANY DEVIATIONS WILL BE CAUSE FOR REJECTION.
 REMOVE ALL BURRS AND SHARP EDGES

BB-116 C

REQ. PER UNIT	MODEL	USED ON
4	TER-5000	ASS'Y. NO. A-1406
		DATE 3-21-57

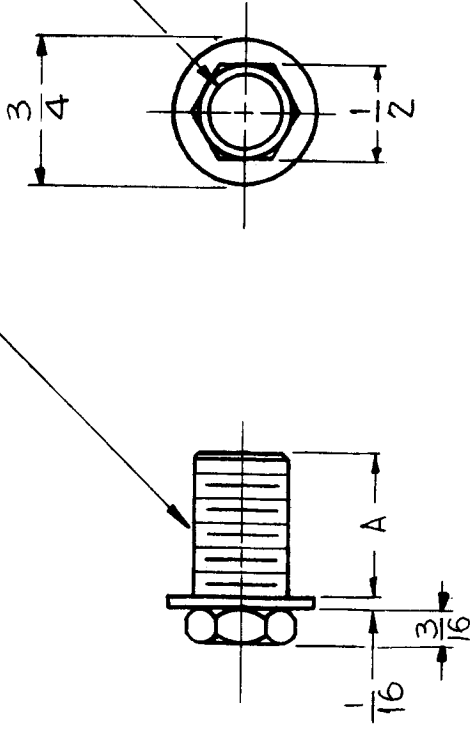


REQ. ITEM	PART NO.	DESCRIPTION	SYMBOL
C 1	5-7-63 8947	THE TECHNICAL MATERIEL CORP. MAMARONECK. NEW YORK	
B 1	1558 2	BUSHING, COIL	
A 2	9957 1	BUSHING, COIL	
ISSUE ITEM	CHANGED FROM	(TER-5000)	
DEC. DIM. ±	TOLERANCES		
FRAC. DIM. ±			
ANGULAR DIM. ±			
	SCALE: NONE		
	MAXIMUM ALLOWABLE TOLERANCES HAVE BEEN DETERMINED AND ANY DEVIATIONS WILL BE CAUSE FOR REJECTION. REMOVE ALL BURRS AND SHARP EDGES		
	DATE 3-21-57	CHECKED	
	DRAWN		
	ELEC. DES. APP.	MECH. DES. APP.	
	FINISH & SPEC. NO.		
	HEAT TREAT. SPEC.		
	MATERIAL		
	STOCK SIZE		
	BRASS		

REG. PER. UNIT	M DEL	USED ON
1	GPT 10K	ASS'Y. N . DATE
		AT-100 4-30-59

BB-121 B

1/2 - ZONF THREAD
CLASS #2B
±.0015
3/8 (.375) DIA. THRU



TMC No.	A DIM.	SUPERCEDES TMC PART NO.
BB-121-1	3/4	BB-121
BB-121-2	1/2	—

STANDARD DRAWING

REQ. ITEM	PART NO.	DESCRIPTION	SYMBOL
		THE TECHNICAL MATERIEL CORP.	
		MAMARONECK, NEW YORK	
		BEARING, PANEL	
		ANTENNA TUNING	
		J.C. BIELE	AMB
		DRAWN	CHECKED
		TYPE & TEMPER	HEAT TREAT. SPEC.
		FINISH & SPEC. NO.	ELEC. DES. APP. MECH. DES. APP.
		FINAL APPR VAL	BB-121 B

STOCK SIZE	BRASS
MATERIAL	

5.7.64	11369	ATB	RCB
7-25-60	6905	SRG	RCB
DATE	CH. NO.	DRAFTS	CHECKER
			ENG. APP.

SCALE:

MAXIMUM ALLOWABLE TOLERANCES HAVE BEEN DETERMINED AND ANY DEVIATIONS WILL BE CAUSE FOR REJECTION. REMOVE ALL BURRS AND SHARP EDGES

TOLERANCES

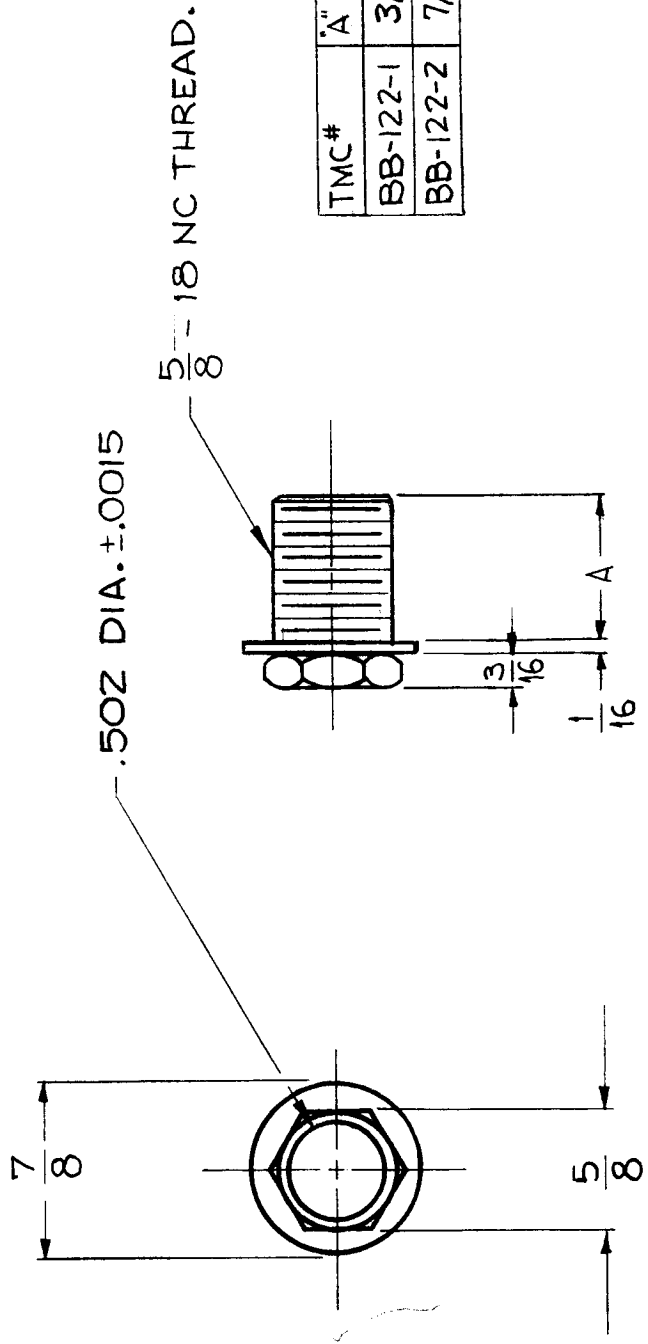
DEC. DIM. ±

FRAC. DIM. ± 1/64

ANGULAR DIM. ±

REQ. PER. UNIT	USED ON	MODEL	ASSY. N.	DATE
1	GPT 10K	AX-137	B-13-59	

BB-122 A



TMC #	A" DIM.	SUPERCEDES TMC PART NO.
BB-122-1	3/4	BB-122
BB-122-2	7/16	—

REQ. ITEM	PART NO.	DESCRIPTION	SYMBOL
		THE TECHNICAL MATERIEL CORP.	
		MAMARONECK, NEW YORK	
		BEARING, PANEL	
ISSUE ITEM	CHANGED FROM	J.C. BIELE	FINAL APPROVAL
A 1	ADDED CHART, CHG. 3/4 TO A	<i>JCB</i>	BB-122 A
	DATE	CHECKED	
	7-25-62	<i>JCB</i>	
	CH. NO.	DRAWN	
	6905	<i>JCB</i>	
	DRAFTS	ELEC. DES. APP.	
	SRG	MECH. DES. APP.	
	CHECKER		
	ENG. APP.		
TOLERANCES			
SCALE:			
MAXIMUM ALLOWABLE TOLERANCES HAVE BEEN DETERMINED AND ANY DEVIATIONS WILL BE CAUSE FOR REJECTION. REMOVE ALL BURRS AND SHARP EDGES			
DEC. DIM. ±			
FRAC. DIM. ±			
ANGULAR DIM. ±			
	TYPE & TEMPER	HEAT TREAT. SPEC.	
	FINISH & SPEC. NO.		

THE CONTENTS OF THIS DRAWING ARE THE EXCLUSIVE PROPERTY OF THE TECHNICAL MATERIEL CORP. ITS UNAUTHORIZED USE OR REPRODUCTION IN WHOLE OR IN PART IS STRICTLY FORBIDDEN.

REQ. PER UNIT

1

USED ON

ASS'Y. NO.

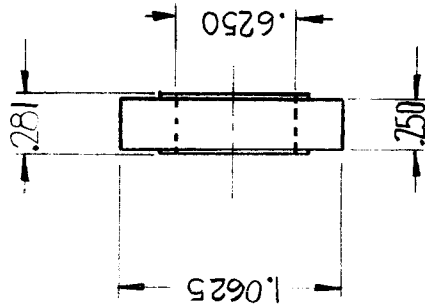
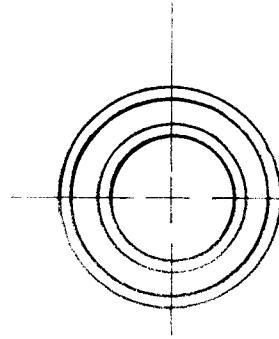
DATE

7-26-62

MODEL

HER-1

BB-127

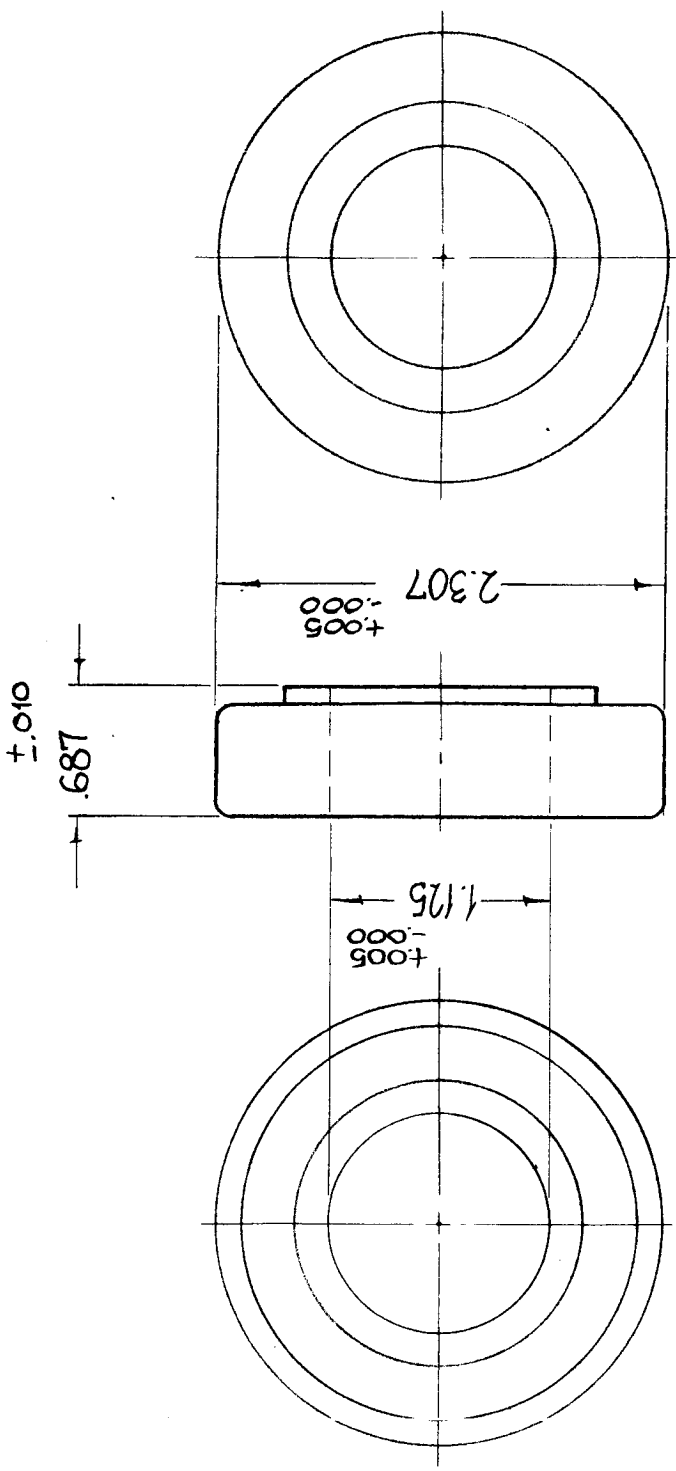


THE FAFNIR BEARING CO. #B-538 DD

REQ. ITEM	PART NO.	DESCRIPTION	SYMBOL
		KROY	
		THE TECHNICAL MATERIEL CORP. MAMARONECK, NEW YORK	
		RACE, BEARING	
		SAE 52100 STEEL	
		MATERIAL	
		TYPE & TEMPER	
		HEATTREAT. SPEC.	
		DRAWN	
		CHECKED	
		ELEC. DES. APP.	
		MECH. DES. APP.	
		FINISH & SPEC. NO.	
		SCALE: Do NOT SCALE	
		DATE	
		CH. NO.	
		DRAFTS	
		CHECKER	
		ENG. APP.	
		UNLESS OTHERWISE SPECIFIED: DIMENSIONS ARE IN INCHES TOLERANCES ON FRAC. ± 1/64 DEC. ± .005 ANGLES ± 1/2°	
		MAXIMUM ALLOWABLE TOLERANCES HAVE BEEN DETERMINED AND ANY DEVIATIONS WILL BE CAUSE FOR REJECTION. REMOVE ALL BURRS AND SHARP EDGES	
		FINAL APPROVAL	
		BB-127	

THE CONTENTS OF THIS DRAWING ARE THE EXCLUSIVE PROPERTY OF THE TECHNICAL MATERIEL CORP. ITS UNAUTHORIZED USE FOR REPRODUCTION IN WHOLE OR IN PART IS STRICTLY FORBIDDEN.

REQ. PER UNIT	1	MODEL	GPT-200K	USED ON ASS'Y. NO.	A-2706	DATE	3-19-63	SYMBOL	BB-130 0
---------------	---	-------	----------	--------------------	--------	------	---------	--------	----------



REQ. ITEM		PART NO.	F. BUDETTI	DESCRIPTION	THE TECHNICAL MATERIEL CORP. MAMARONECK, NEW YORK	SYMBOL	BB-130 0
STOCK SIZE					BEARING, RACE		
MATERIAL							
TYPE & TEMPER			SRG	DRAWN	SRG	CHECKED	ARR
HEAT TREAT. SPEC.							
FINISH & SPEC. NO.							BB-130 0
REVISIONS							
0	ORIG. RELEASE FOR PROD.	5-27-64	SRG				
X1	DIMENSIONS ADDED	1-15-64					
SYM	DESCRIPTION	DATE	CH. NO.	DRAFTS	CHECKER	ENG. APP.	
	UNLESS OTHERWISE SPECIFIED DIMENSIONS ARE IN INCHES AND INCLUDE CHEMICALLY APPLIED OR PLATED FINISHES		SCALE	1" = 1"			
	DECIMALS X ± .05 XX ± .01 XXX ± .005		FRACTIONS ± 1/64 ANGLES ± 0° 30'				
	TOLERANCES		CODE	S401-15 (#713)			