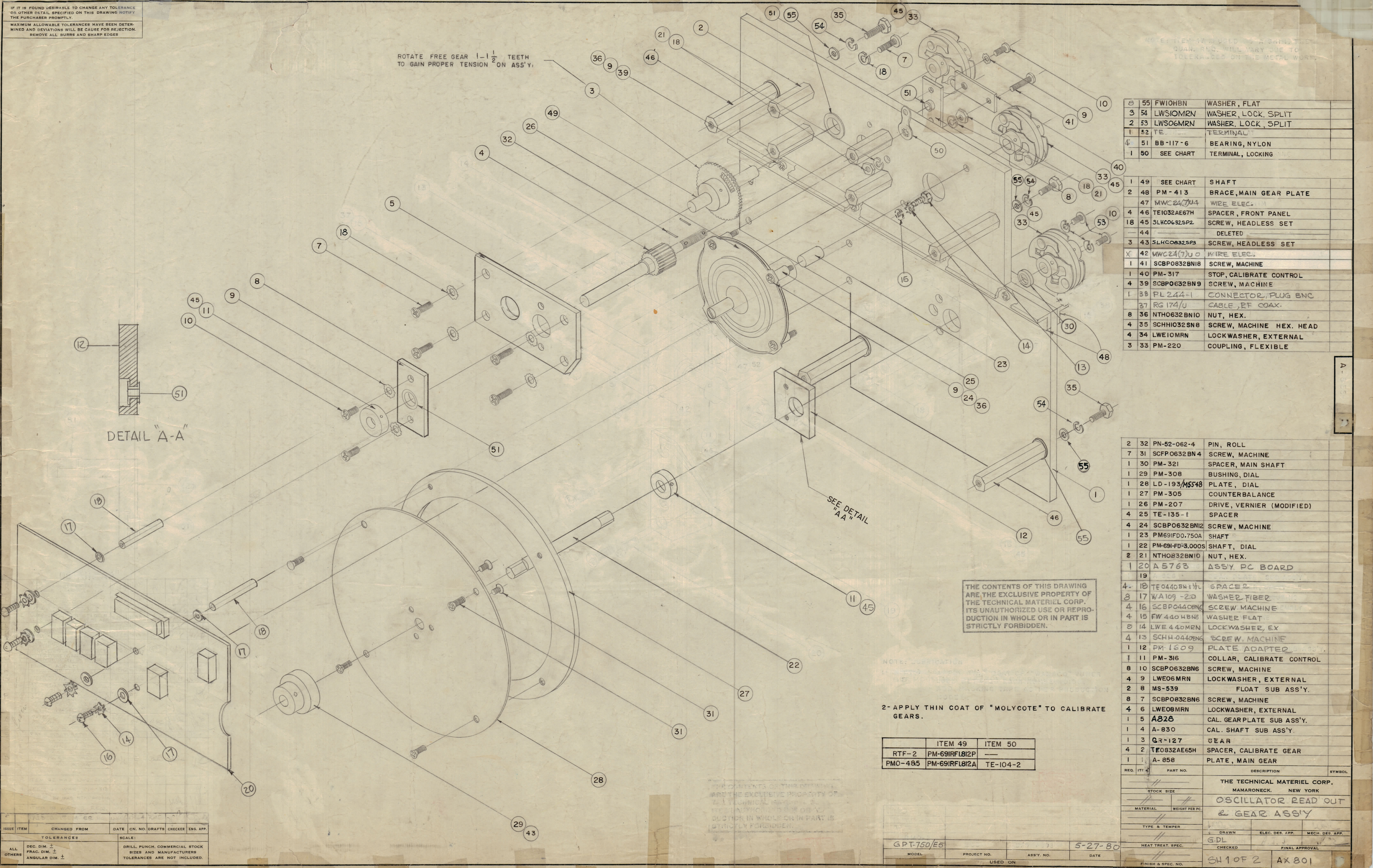


IF IT IS FOUND DESIRABLE TO CHANGE ANY TOLERANCE OR OTHER DETAIL SPECIFIED ON THIS DRAWING NOTIFY THE PURCHASER PROMPTLY.
 MAXIMUM ALLOWABLE TOLERANCES HAVE BEEN DETERMINED AND DEVIATIONS WILL BE CAUSE FOR REJECTION. REMOVE ALL BURRS AND SHARP EDGES

ROTATE FREE GEAR 1-1/2 TEETH TO GAIN PROPER TENSION ON ASS'Y.



55	FW10HBN	WASHER, FLAT
3	LWSIOMRN	WASHER, LOCK, SPLIT
2	LWSOGMRN	WASHER, LOCK, SPLIT
1	52 TE	TERMINAL
4	51 BB-117-6	BEARING, NYLON
1	50	SEE CHART

1	49	SEE CHART	SHAFT	
2	48	PM-413	BRACE, MAIN GEAR PLATE	
4	47	MWC24(7)U4	WIRE ELEC.	
4	46	TE1032AE67H	SPACER, FRONT PANEL	
1	18	45	SLHC0632SP2	SCREW, HEADLESS SET
	44		DELETED	
3	43	SLHC0832SP3	SCREW, HEADLESS SET	
X	42	MWC24(7)U0	WIRE ELEC.	
1	41	SCBP0832BN18	SCREW, MACHINE	
1	40	PM-317	STOP, CALIBRATE CONTROL	
4	39	SCBP0632BN9	SCREW, MACHINE	
1	38	PL244-1	CONNECTOR, PLUG BNC	
	37	RG174/U	CABLE, RF COAX.	
8	36	NTH0632BN10	NUT, HEX.	
4	35	SCHH032SN8	SCREW, MACHINE HEX. HEAD	
4	34	LWE10MRN	LOCKWASHER, EXTERNAL	
3	33	PM-220	COUPLING, FLEXIBLE	

2	32	PN-52-062-4	PIN, ROLL
7	31	SCFP0632BN4	SCREW, MACHINE
1	30	PM-321	SPACER, MAIN SHAFT
1	29	PM-308	BUSHING, DIAL
1	28	LD-193/M5548	PLATE, DIAL
1	27	PM-305	COUNTERBALANCE
1	26	PM-207	DRIVE, VERNIER (MODIFIED)
4	25	TE-135-1	SPACER
4	24	SCBP0632BN12	SCREW, MACHINE
1	23	PM691FD0.750A	SHAFT
1	22	PM-691FD-3.000S	SHAFT, DIAL
2	21	NTH0832BN10	NUT, HEX.
1	20	A5763	ASSY PC BOARD

4	18	TE04405H1/4L	SPACER
8	17	WA109-20	WASHER FIBER
4	16	SCBP0440BN6	SCREW, MACHINE
4	15	FW4404BN5	WASHER FLAT
8	14	LWE440MRN	LOCKWASHER, EX
4	13	SCHH0440BN6	SCREW, MACHINE
1	12	PM-1609	PLATE ADAPTER
1	11	PM-316	COLLAR, CALIBRATE CONTROL
8	10	SCBP0632BN6	SCREW, MACHINE
4	9	LWE06MRN	LOCKWASHER, EXTERNAL
2	8	MS-539	FLOAT SUB ASS'Y.
8	7	SCBP0832BN6	SCREW, MACHINE
4	6	LWE08MRN	LOCKWASHER, EXTERNAL
1	5	A828	CAL. GEAR PLATE SUB ASS'Y.
1	4	A-830	CAL. SHAFT SUB ASS'Y.
1	3	GR-127	GEAR
4	2	TE0832AE65H	SPACER, CALIBRATE GEAR
1	1	A-858	PLATE, MAIN GEAR

THE CONTENTS OF THIS DRAWING ARE THE EXCLUSIVE PROPERTY OF THE TECHNICAL MATERIEL CORP. ITS UNAUTHORIZED USE OR REPRODUCTION IN WHOLE OR IN PART IS STRICTLY FORBIDDEN.

NOTE: 1. APPLICATION OF MOLYCOTE TO CALIBRATE GEARS.
 2- APPLY THIN COAT OF "MOLYCOTE" TO CALIBRATE GEARS.

ITEM 49	ITEM 50
RTF-2	PM-691RF1812P
PMO-485	PM-691RF1812A
	TE-104-2

MODEL	PROJECT NO.	ASSY. NO.	DATE
GPT-150/E5			5-27-80

ISSUE	ITEM	CHANGED FROM	DATE	CN. NO.	DRAFTS	CHECKER	ENG. APP.
ALL	OTHERS	DEC. DIM. ±	FRAC. DIM. ±	ANGULAR DIM. ±	DRILL, PUNCH, COMMERCIAL STOCK	SIZES AND MANUFACTURERS	TOLERANCES ARE NOT INCLUDED.

REQ. QTY.	PART NO.	DESCRIPTION	SYMBOL
STOCK SIZE		THE TECHNICAL MATERIEL CORP.	
MATERIAL	WEIGHT PER PC.	MAMARONECK, NEW YORK	
TYPE & TEMPER		OSCILLATOR READ OUT	
HEAT TREAT. SPEC.		& GEAR ASS'Y	
FINISH & SPEC. NO.		DRAWN	ELEC. DES. APP. MECH. DES. APP.
		GDL	
		CHECKED	FINAL APPROVAL
		SH 1 OF 2	AX 801