

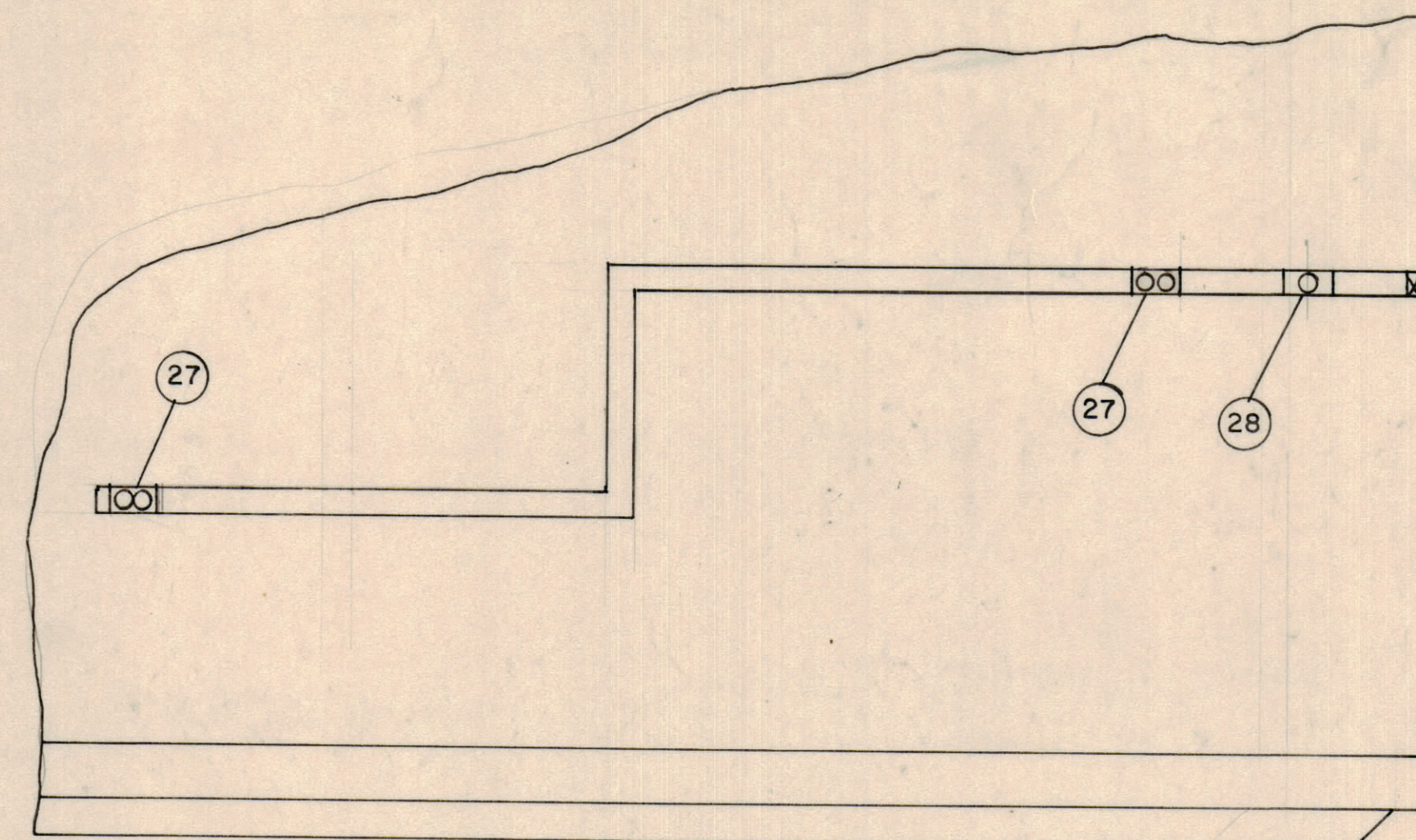
LEGEND

- 1 DIESEL ENGINE, HERCULES MODEL D4800T
- 2 GENERATOR, KATO MODEL 50SU9E 50KW, 0.8PF, 120/208V, 3Ø, 4W, 60HZ, 1800RPM
- 3 CONTROL CABINET
- 4 GENERATOR CONDUIT BOX
- 5 DISTRIBUTION PANEL
- 6 BY-PASS SWITCH, LAKESHORE, GFE BY FAA
- 7 POWER CONDUIT, 3"
- 8 INTAKE LOUVER, TYPICAL EACH SIDE
- 9 FLEXIBLE METAL EXHAUST HOSE
- 10 3" EXHAUST PIPE
- 11 3" NPT PIPE COUPLING
- 12 RAIN COVER
- 13 3" LONG RADIUS 90° ELBOW
- 14 EXHAUST SILENCER, 3" NPT INLET AND OUTLET
- 15 EXHAUST SILENCER SUPPORT
- 16 3" EXHAUST PIPE EXTENSION
- 17 SHROUD
- 18 EXHAUST LOUVER
- 19 EXHAUST HOOD
- 20 SHELTER LIGHT
- 21 BATTERIES AND BATTERY RACK (PROVIDED BY FAA)
- 22 5/8-11UNC X 2 3/4" LG. HEX. HD. BOLT, BRASS
- 23 5/8-11UNC HEX. NUT, BRASS
- 24 5/8 LOCK WASHER, SPLIT, BRONZE
- 25 3" ASBESTOS GASKET
- 26 3" ASA 125 LB. FLANGE, THREADED TYPE (TYPICAL FOR ALL FLANGES)
- 27 120VAC RECEPTACLE
- 28 208VAC RECEPTACLE
- 29 INTAKE HOOD

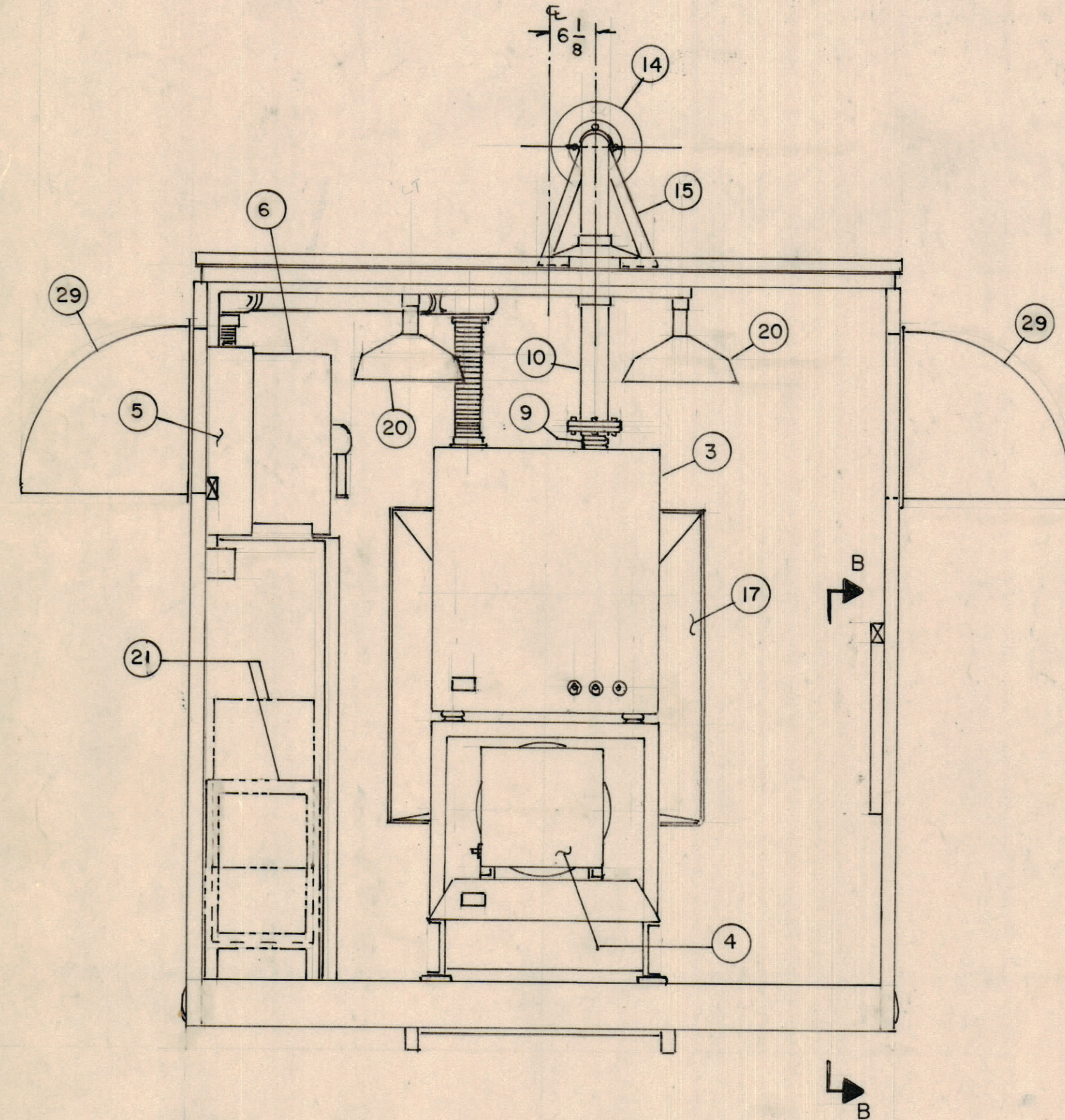
NOTES:

- 1. NET WEIGHT — 3400 LBS.
GROSS WEIGHT — 7681 LBS.
- 2. REFER TO TMC DRAWING AX718 FOR 50KW ENGINE-GENERATOR UNIT CONFIGURATION (EXCEPT FOR EXHAUST SILENCER MOUNTING).

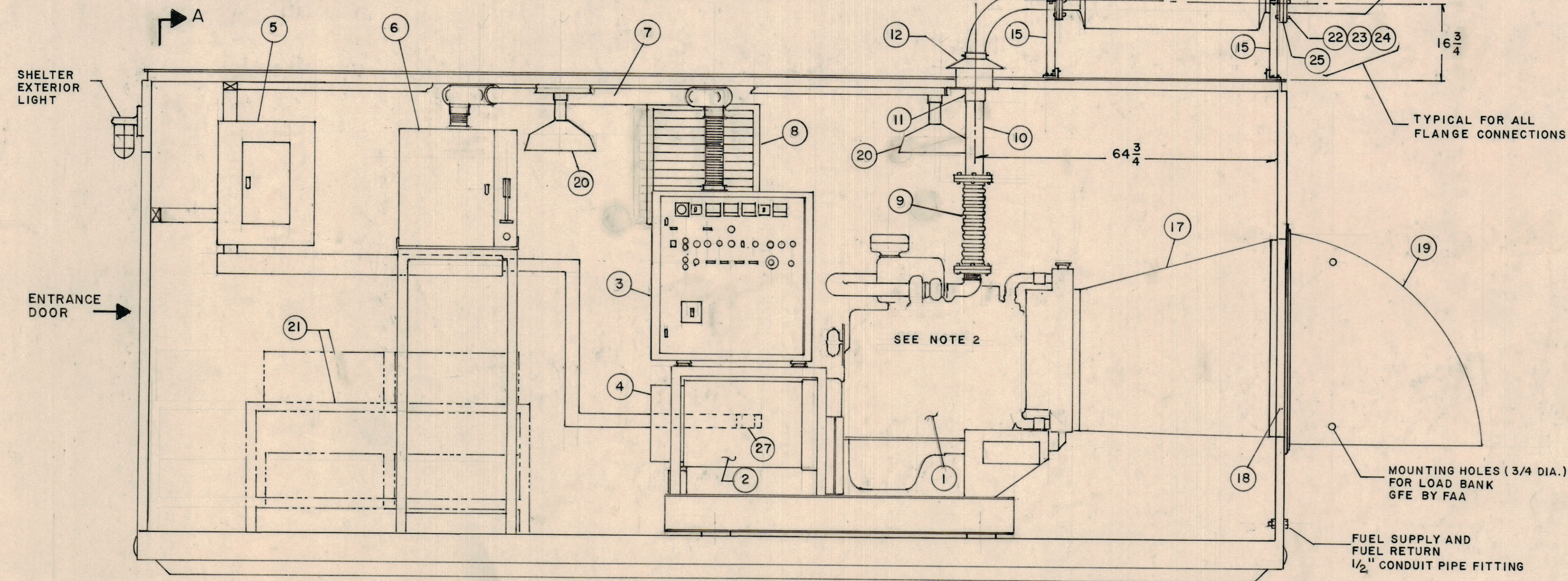
| REVISIONS | | | | | | |
|-----------|-----|--|---------|-------|-------|-------|
| ZONE | LTR | DESCRIPTION | DATE | DRAFT | CHK'D | APP'D |
| | B | REDRAWN WITH CHANGES AS PER AAF-530 LETTER DATED 2-28-73 | 6/22/73 | EF | EF | |



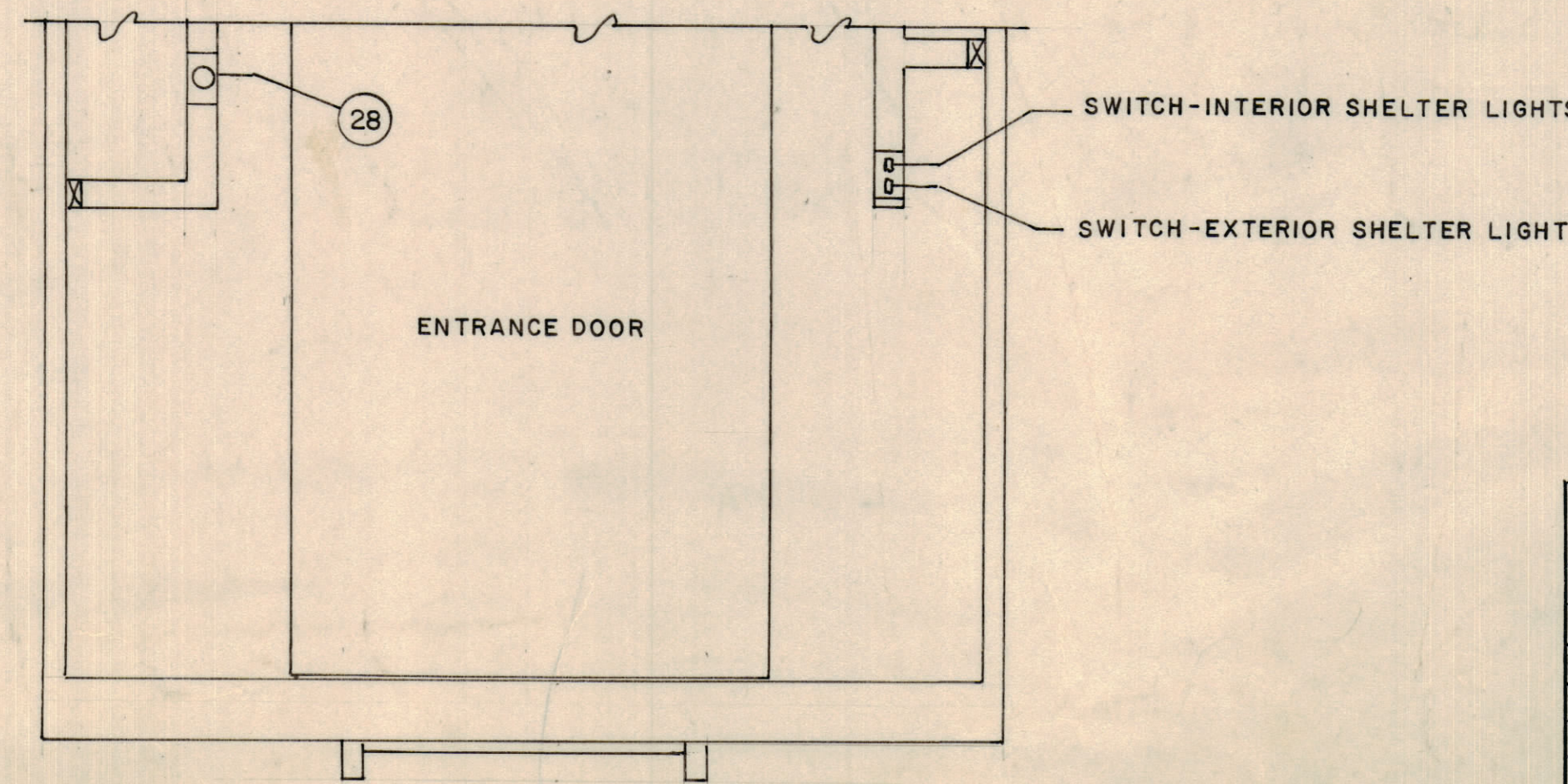
VIEW B-B



VIEW A-A



INTERIOR SIDE ELEVATION



INTERIOR (DOOR END) ELEVATION

| QTY REQ | QTY REQ | QTY REQ | ITEM | PART NO. | MANUFACTURER | DESCRIPTION | SYM |
|-------------------|---------------|----------|------|--------------|--------------|-------------|---|
| PARTS LIST | | | | | | | |
| DRAWN | | | | FRAMPTON | DATE | 6-22-73 | THE TMC SYSTEMS AND POWER CORPORATION SPRINGFIELD, VIRGINIA 50KW ENGINE - GENERATOR SET FAA SHELTER ENCLOSED |
| CHECKED | | | | | DATE | 6-22-73 | |
| D. ENG. | | | | | DATE | 6-23-73 | |
| P. ENG. | | | | | DATE | | |
| P. MGR. | | | | | DATE | | |
| CHIEF, ENG. DEPT. | | | | | DATE | | |
| TMC QRO | | | | | DATE | 8-7-73 | |
| FAA QRO | | | | | DATE | 8-23-73 | |
| SIZE | CODE IDENT NO | DWG. NO. | REV | | | | |
| D | 24146 | AX 724 | B | | | | |
| SCALE | NONE | | | SHEET 1 OF 1 | | | |

INTERPRET DRAWING PER LISTED DOCUMENTS

DIMENSIONING
MIL - STD - 8
SURFACE ROUGHNESS
MIL - STD - 10
ABBREVIATIONS
MIL - STD - 12
ELECTRONIC SYMBOLS
MIL - STD - 15
WELDING SYMBOLS
JAN - STD - 19

UNLESS OTHERWISE SPECIFIED DIMENSIONS ARE IN INCHES AND INCLUDE CHEMICALLY APPLIED OR PLATED FINISHES. REMOVE ALL BURRS AND SHARP EDGES.

TOLERANCES ON
FRACTIONS ANGLES DECIMALS

MATERIAL

FINISH

NOTICE TO PERSONS RECEIVING THIS DRAWING
THE TMC SYSTEMS AND POWER CORPORATION claims proprietary right in the material disclosed herein. This drawing is issued in confidence for engineering information only and may not be reproduced or used to manufacture anything shown herein without permission from THE TMC SYSTEMS AND POWER CORPORATION to the user. This drawing is loaned for mutual assistance and is subject to recall at any time.