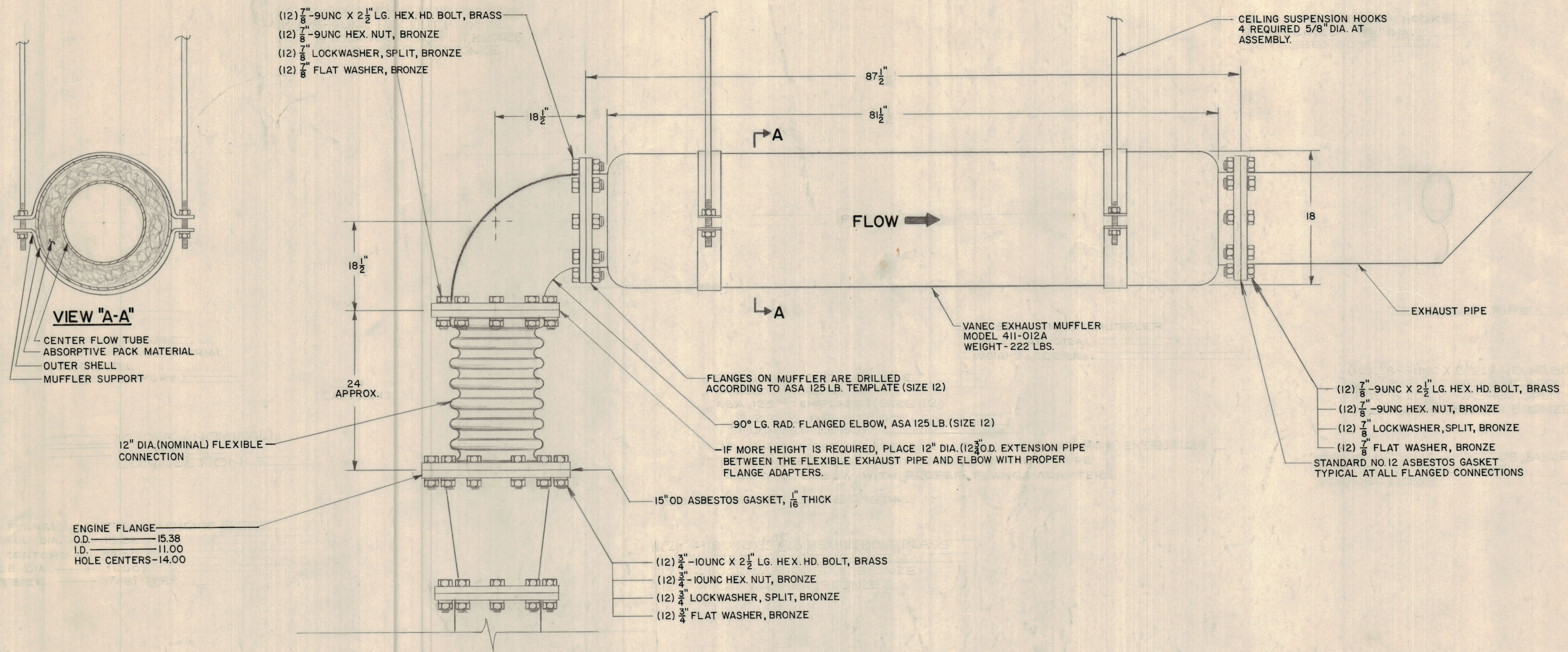


REVISIONS					
ZONE	LTR	DESCRIPTION	DATE	DRAFT	CHK'D APPD

73R



ENGINE GENERATOR SET

REF. TMC DWG. NOS.
 EGS500B (425 KW)
 EGS500B-1 (500KW)

ENGINE FLANGE
 O.D. 15.38
 I.D. 11.00
 HOLE CENTERS-14.00

QTY REQ	QTY REQ	QTY REQ	ITEM	PART NO.	MANUFACTURER	DESCRIPTION	SYM

INTERPRET DRAWING PER LISTED DOCUMENTS DIMENSIONING MIL - STD - 8 SURFACE ROUGHNESS MIL - STD - 10 ABBREVIATIONS MIL - STD - 12 ELECTRONIC SYMBOLS MIL - STD - 15 WELDING SYMBOLS JAN - STD - 19		UNLESS OTHERWISE SPECIFIED DIMENSIONS ARE IN INCHES AND INCLUDE CHEMICALLY APPLIED OR PLATED FINISHES REMOVE ALL BURRS AND SHARP EDGES TOLERANCES ON FRACTIONS ANGLES DECIMALS MATERIAL FINISH		DRAWN MITCH DATE 10-11-72 CHECKED [Signature] DATE 8-1-73 D. ENG. [Signature] DATE 8-1-73 P. ENG. DATE P. MGR. DATE CHIEF, ENG. DEPT. DATE 8-1-73 FAA QRO G. White DATE 6-25-73	THE TMC SYSTEMS AND POWER CORPORATION SPRINGFIELD, VIRGINIA 500KW ENGINE GENERATOR SET EXHAUST ASSEMBLY MUFFLER TO ENGINE SIZE D CODE IDENT NO 24146 DWG. NO. AX722 REV SCALE NONE SHEET 1 OF 1
---	--	---	--	---	---

NOTICE TO PERSONS RECEIVING THIS DRAWING
 THE TMC SYSTEMS AND POWER CORPORATION claims proprietary right in the material disclosed hereon. This drawing is issued in confidence for engineering information only and may not be reproduced or used to manufacture anything shown hereon without permission from THE TMC SYSTEMS AND POWER CORPORATION to the user. This drawing is loaned for mutual assistance and is subject to recall at any time.