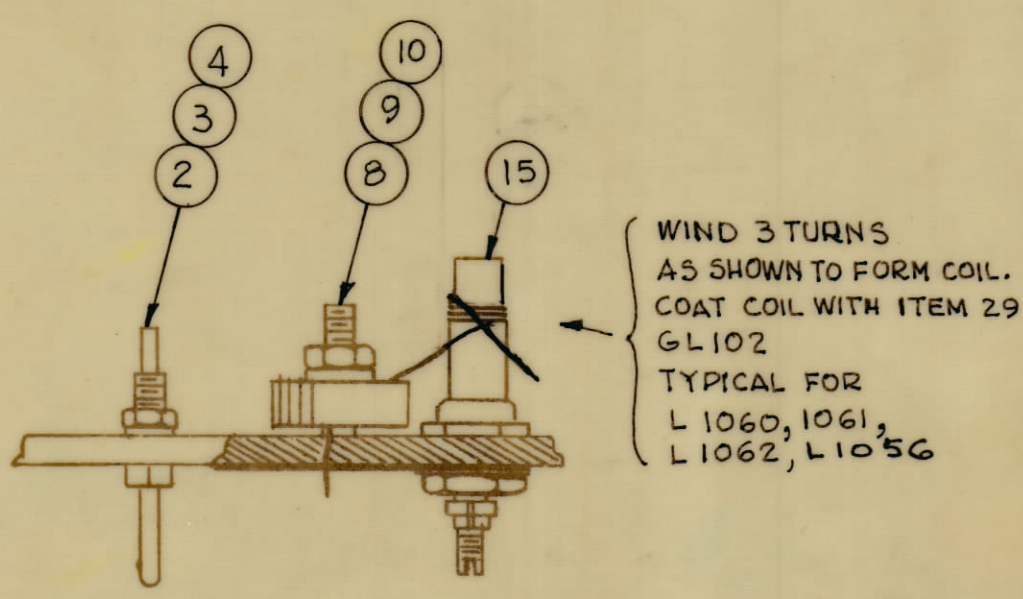
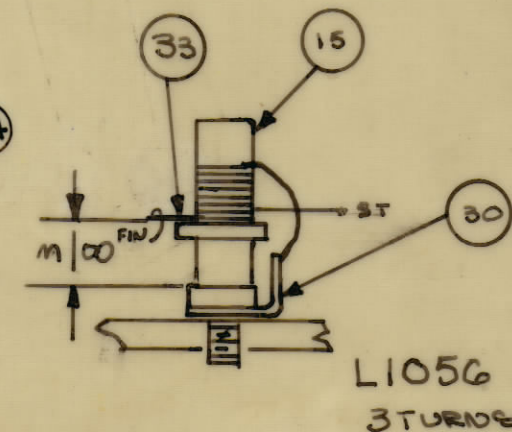
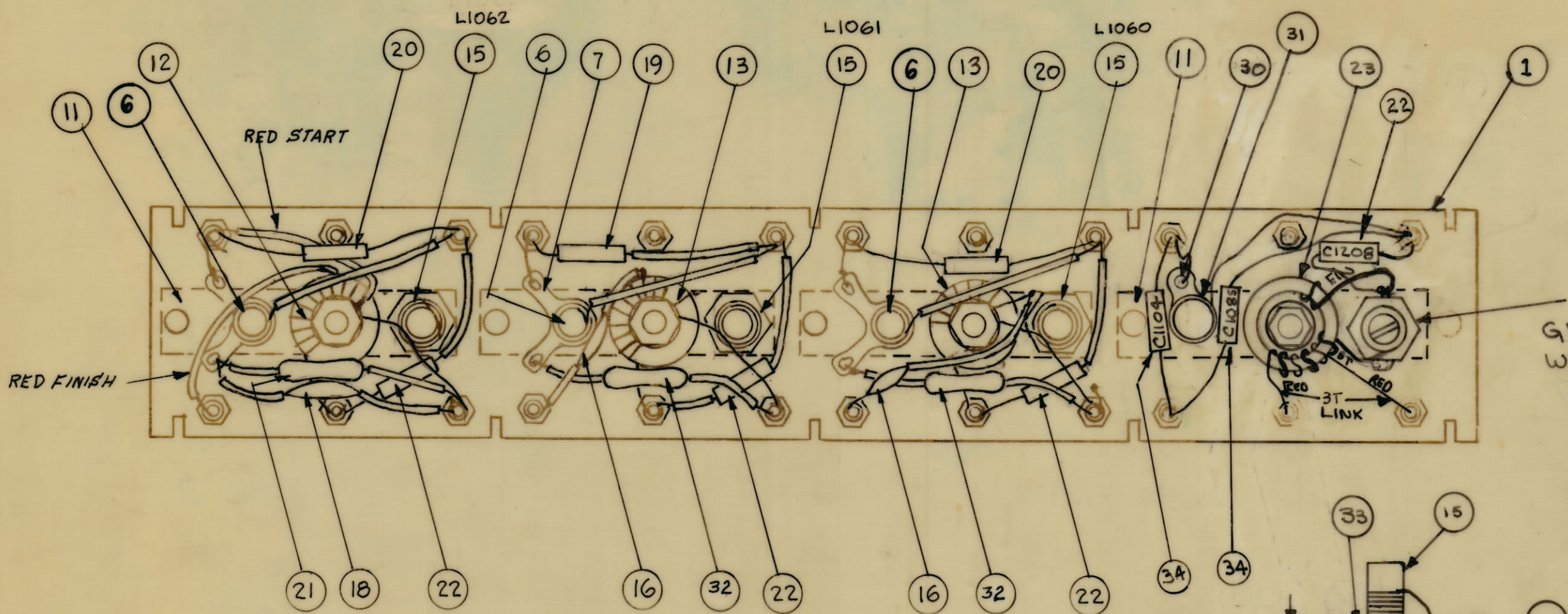


REVISIONS						
ZONE	SYM	DESCRIPTION	DATE	E.M.N. NO.	DRAFT	CHKD
X		EXPER. RELEASE	2-24-65		G.D.L.	
X1		SYMBOLS T1025, T1026 & L1059 ADDED TO ITEMS 12, 13 & 14	3-8-65		G.D.L.	
X2		COMPLETELY REVISED	3-22-65		G.D.L.	
		ORIGINAL RELEASE FOR PRODUCTION	3-24-65		G.D.L.	
A		C1200, C1204, C1209, 1213, IT.31, CALLOUTS ADDED IT.4 WAS 2, INTERNAL, IT.6 WAS 5, CV108-3-2, IT.14 WAS 1	7/4/65	14434	H.V.V.	
B		PICT. CLARIFIED; ITEM 6 WAS CV108-3, IT 14 WAS C1305 IT.31, 32 ADDED	8-13-65	14554	H.V.V.	
C		COMPLETELY REVISED	8/24/65	14712	D.V.V.	
D		IT.35, CM15C20603, & IT.14 T2212 DELETED IT.34 WAS CM15C390J03 QTY 1, IT.13 WAS QTY 1 AND SYM T1027 ADDED.	10/1/65	14915	H.V.V.	
E		IT.16 SYM WAS C1209, IT.20 SYM WAS C1203 IT.22 SYM WAS C1205	11/2/65	15084	H.V.V.	



REQ'D.	ITEM	PART NUMBER	DESCRIPTION	SYMBOL
2	35	DELETED		
2	34	CM15C470J03	CAPACITOR	C1085, C1104
1	33	TE181-1	TERMINAL COLLAR	
2	32	CM100-6	CAPACITOR FIXED, MICA.	C1202, C1207
1	31	CV108-3	CAPACITOR VAR., GL.	C1200
2	30	TE104-4	TERMINAL, LUG	
X	29	GL102	Q-MAX	
	28	DELETED	TERMINAL, STUD	
	27	DELETED		
X	26	BS100	SOLDER, TIN ALLOY	
X	25	PX104-1-034	INS. SLEEVING, SIZE 20	
X	24	WL100-6	WIRE, ELEC. BUSS	
1	23	TZ193	TRANSFORMER, COIL, ASSEMBLY	T1024
4	22	CM15F271G03	CAPACITOR, FIXED, MICA	C1208, C1213 C1196, C1203 C1214
1	21	CM112F622G3S	CAPACITOR, FIXED, MICA	C1212
2	20	CM15D150G03YY	CAPACITOR, FIXED, MICA	C1207, 1205
1	19	CM15C050J03YY	CAPACITOR, FIXED, MICA	C1210
1	18	CC100-32	CAPACITOR, FIXED, CER.	C1211
		DELETED	CAPACITOR, FIXED, CER.	C1199
2	16	CC100-9	CAPACITOR, FIXED, CER.	C1201, C1206
4	15	CF134-5-0	FORM, COIL, WITH CORE	
	14	DELETED		
2	13	TZ206	TRANSFORMER, RF DRIVER	T1025, T1027
1	12	TZ205	TRANSFORMER, RF OUTPUT	T1026
4	11	MS2897	PLATE, ELEC. GRD.	
4	10	NT1370632	NUT, PLAIN, HEX, NYLON	
4	9	FW101-1	WASHER, NM, NYLON	
4	8	SC1430632BIOW	SCREW, MACHINE, NYLON	
3	7	TE154-.196	TERMINAL, LUG, NO. 10	
3	6	CV108-2	CAPACITOR, VAR., GL	
		DELETED	TRANSFORMER, FIXED, COMP.	T1060, T1061
24	4	LWS04MRN	WASHER, LOCK, SPLIT	
24	3	NTH0440BNG	NUT, PLAIN, HEX	
24	2	TE191-1	TERMINAL, STUD-PIN	
1	1	PX894/LD1735	TERMINAL, BOARD	

J. ANGER LIST OF MATERIAL				
MATERIAL	#	THE TECHNICAL MATERIEL CORP. MAMARONECK, NEW YORK		
FINISH	#	TITLE TERMINAL BOARD RF. ASSY BAND # 8		
UNLESS OTHERWISE SPECIFIED DIMENSIONS ARE IN INCHES AND INCLUDE CHEMICALLY APPLIED OR PLATED FINISHES	DRAWN	G.D.L.	DATE	2-24-65
DECIMALS .X ± .05 .XX ± .01 .XXX ± .005	CHECKED	JCS	DATE	3/2/65
FRACTIONS ± 1/64 ANGLES ± 0° 30'	ELECT. DES.	Janger	DATE	3/22/65
TOLERANCES	MECH. DES.		DATE	
				AX555
				E

CHG-3 A2946		
QTY./UNIT	MODEL USED ON	ASSY. NO.
DO NOT SCALE	A	
THE CONTENTS OF THIS DRAWING ARE THE EXCLUSIVE PROPERTY OF THE TECHNICAL MATERIEL CORP. ITS UNAUTHORIZED USE OR REPRODUCTION IN WHOLE OR IN PART IS STRICTLY FORBIDDEN.		

NOTES