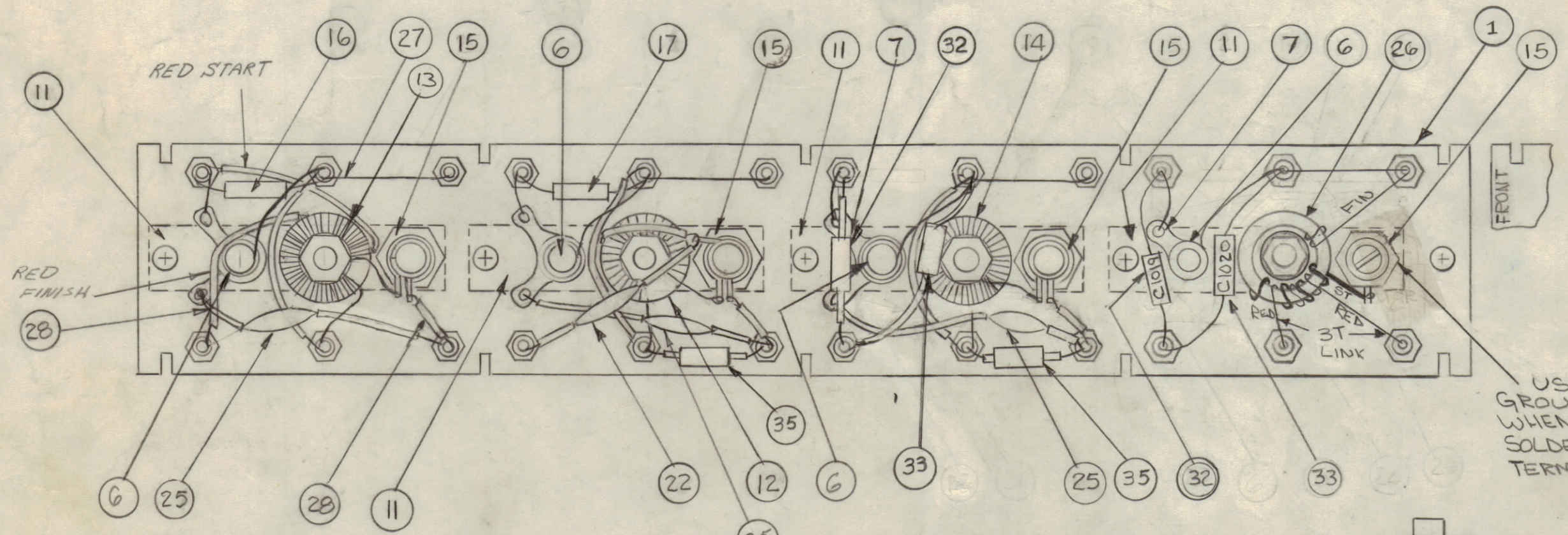
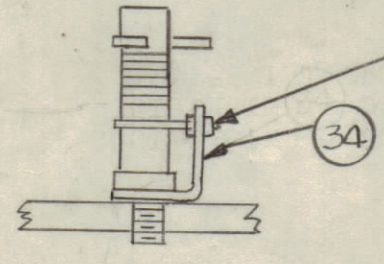
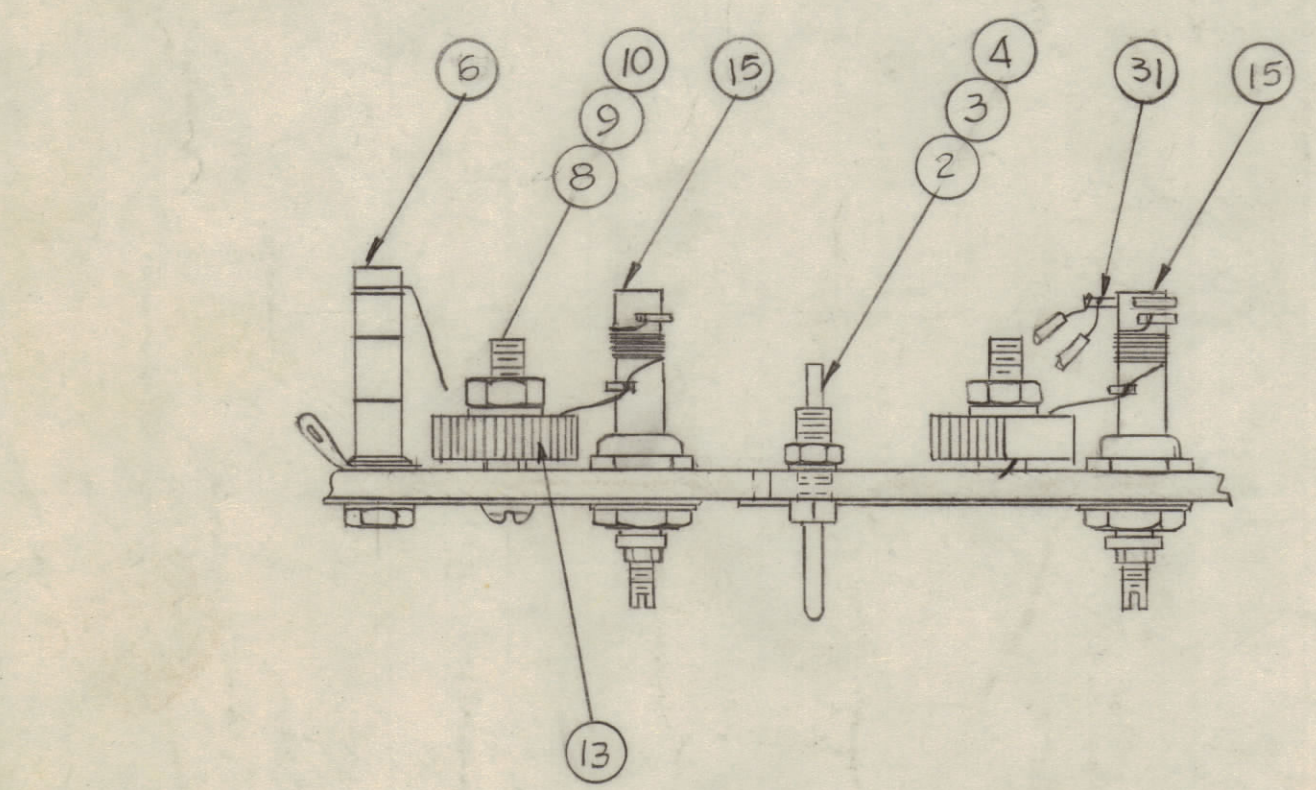


REVISIONS						
ZONE	SYM	DESCRIPTION	DATE	E.M.N. NO.	DRAFT	CHKD APPD
X		EXPER. RELEASE	2-13-65		G.D.L.	
X1		COMPLETELY REVISED	3-17-65		G.D.L.	
Ø		ORIGINAL RELEASE FOR PRODUCTION	3-24-65		G.D.L.	
A		IT. 15. A2492, IT. 13 T1004, CALLOUTS ADDED	7/9/65	14434	D.V.V.	QCB
B		C1037 ADDED, PICT. CLARIFIED	8/13/65	14554	D.V.V.	QCB
C		COMPLETELY REVISED	8/24/65	14712	D.V.V.	QCB
D		IT. 22 QTY WAS 2, C1025 DELE., IT. 32 QTY WAS 1 C1028 ADD., IT. 33 QTY WAS 1, C1025, IT. 18 DELE.	11/1/65	14915	F.V.	QCB



USE GROUND TERMINAL WHEN MOUNTING; SOLDER TO BOTTOM TERMINAL OF COIL.



REQ'D.	ITEM	PART NUMBER	DESCRIPTION	SYMBOL
2	35	RC206F223J	RESISTOR	R1033, R1034
1	34	TE104-4	TERMINAL LUG	
2	33	CM15F101G03	CAPACITOR	C1020, C1025
2	32	CM15F271G03	CAPACITOR	C1019, C1028
1	31	TE153-1	TERMINAL, LUG, RING	
	30	DELETED	TERMINAL, STUD	
X	29	BS100	SOLDER, TIN ALLOY	
X	28	PX104-1-034	INS. SLEEVING, SIZE 20	
X	27	WL100-6	WIRE, ELEC. BUSS	
1	26	TZ186	TRANSFORMER, INPUT	T1002
3	25	CC100-37	CAPACITOR FIXED, CER. .1MF	
	24	DELETED		
	23	DELETED		
1	22	CC100-14	CAPACITOR, FIXED, CER. .0047MF	C1029
	21	DELETED		
	20	DELETED		
	19	DELETED		
	18	DELETED		
1	17	CM15C560G03		C1031
1	16	CM15C680G03	CAPACITOR FIXED, MICA	C1032
4	15	AC164	COIL, RF, TUNED	A2492
1	14	CI359	COIL, RF	L1006
1	13	TZ185	TRANSFORMER, RF, OUTPUT	T1004
1	12	TZ184	TRANSFORMER, RF, DRIVER	T1003
4	11	MS2897	PLATE, ELEC. GROUND	
4	10	NT137-0632	NUT, PLAIN, HEX, NYLON	
4	9	FW101-1	WASHER, NM, NYLON	
4	8	SC143-0632B10W	SCREW, MACHINE, NYLON	
4	7	TE154-.196	TERMINAL, LUG, NO. 10	
4	6	CV108-3	CAPACITOR, VARIABLE, GL	
		DELETED		
24	4	LWS04MRN	WASHER, LOCK, SPLIT	
24	3	NTH0440BNG	NUT, PLAIN, HEX	
24	2	TE191-1	TERMINAL, STUD-PIN	
1	1	LD1728/PX894	TERMINAL, BOARD, RF	

AX548

C1026
C1059
C1037

L1007
L1008
L1009
L1005

C1024
C1027
C1030
C1033

TERMINALS (ITEM 30) TO BE MOUNTED BEFORE ASSEMBLY OF OTHER COMPONENTS.

NOTES

Q'TY./UNIT	CHG-3	A2946
SCALE	MODEL USED ON	ASSY. NO.
DO NOT SCALE	A	
THE CONTENTS OF THIS DRAWING ARE THE EXCLUSIVE PROPERTY OF THE TECHNICAL MATERIEL CORP. ITS UNAUTHORIZED USE OR REPRODUCTION IN WHOLE OR IN PART IS STRICTLY FORBIDDEN.		

UNLESS OTHERWISE SPECIFIED DIMENSIONS ARE IN INCHES AND INCLUDE CHEMICALLY APPLIED OR PLATED FINISHES			DRAWN G.D.L. DATE 2-11-65	
DECIMALS: .X ± .05, .XX ± .01, .XXX ± .005			CHECKED QCB DATE 3/24/65	
FRACTIONS: ± 1/64, ANGLES: ± 0° 30'			MECH. DES. J. Anger DATE 3/22/65	
TOLERANCES			DATE 3/22/65	
			SHEET	

AX548

D