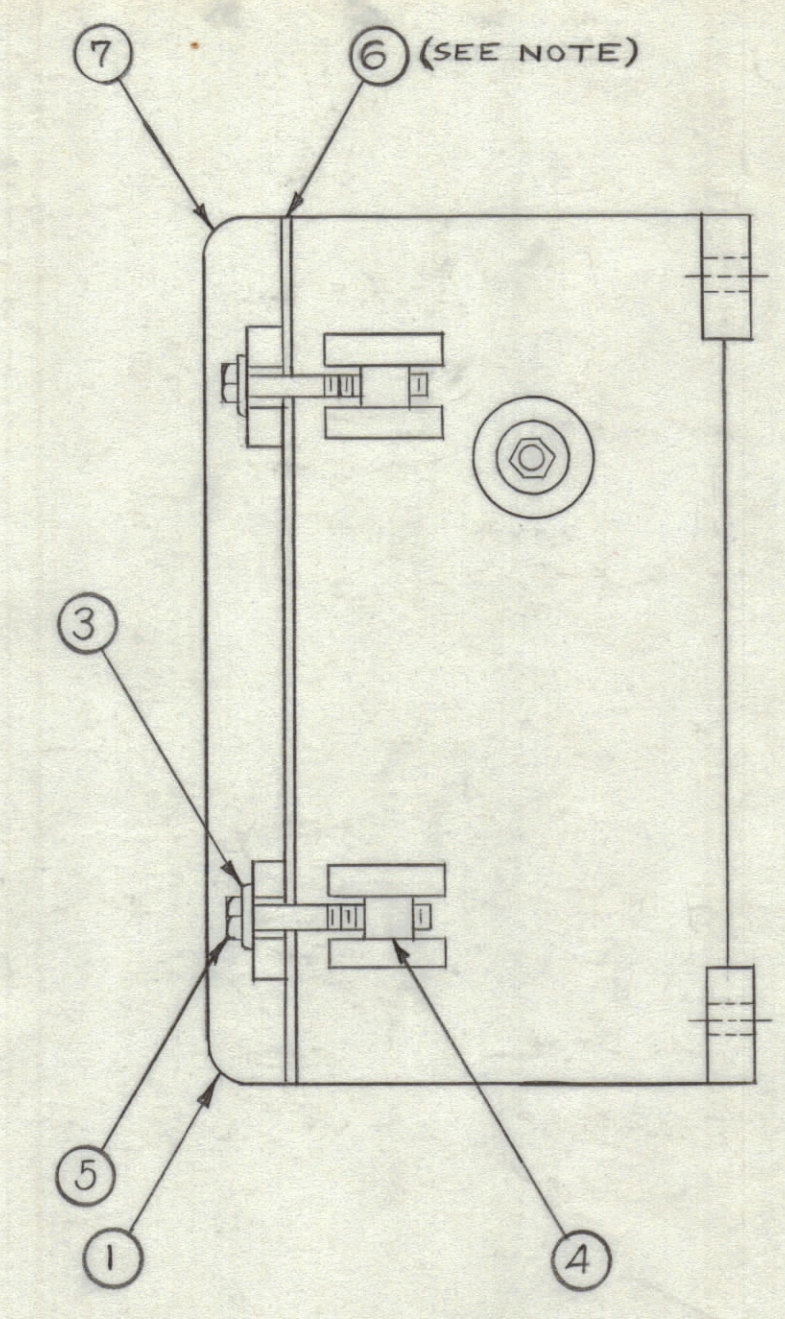
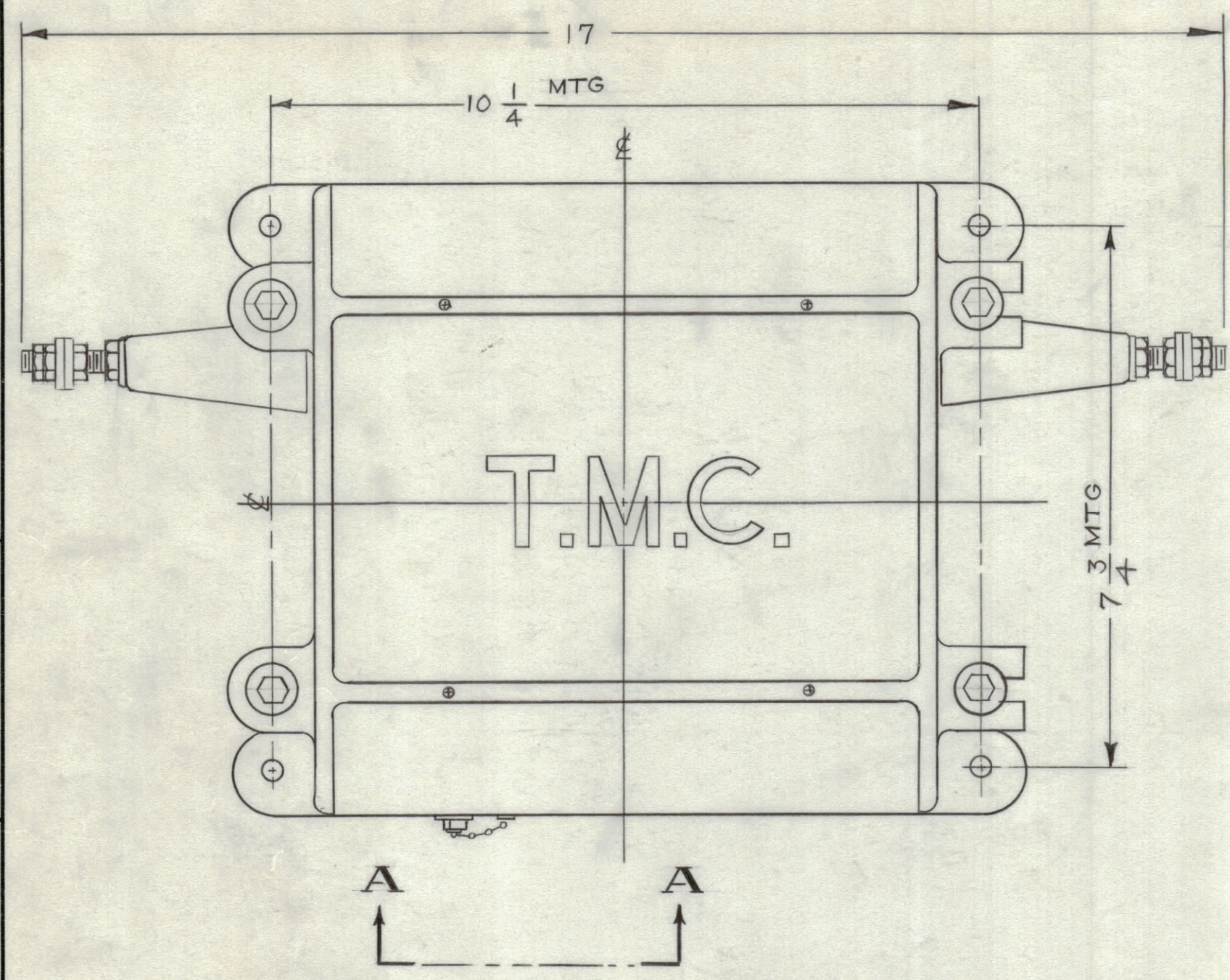
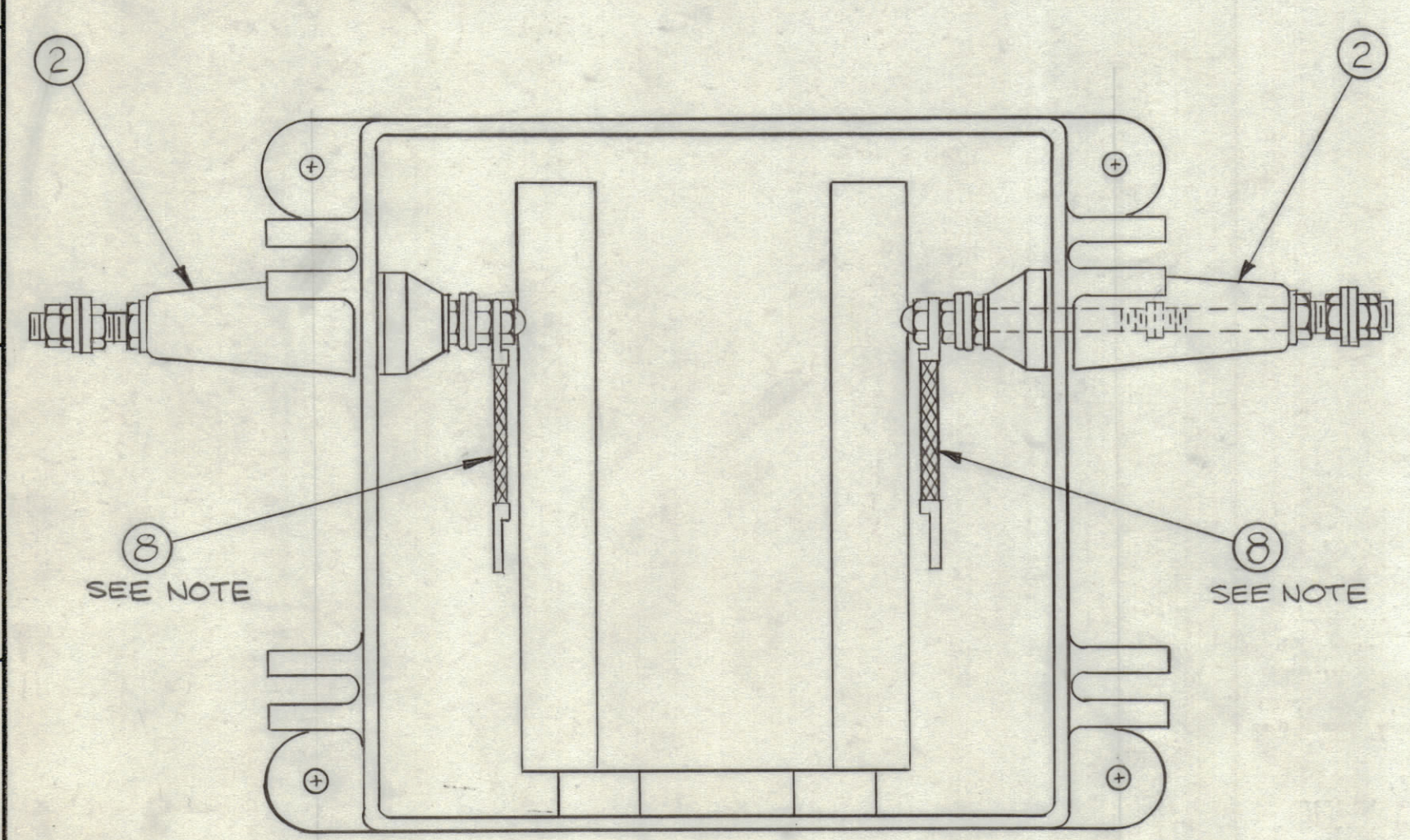


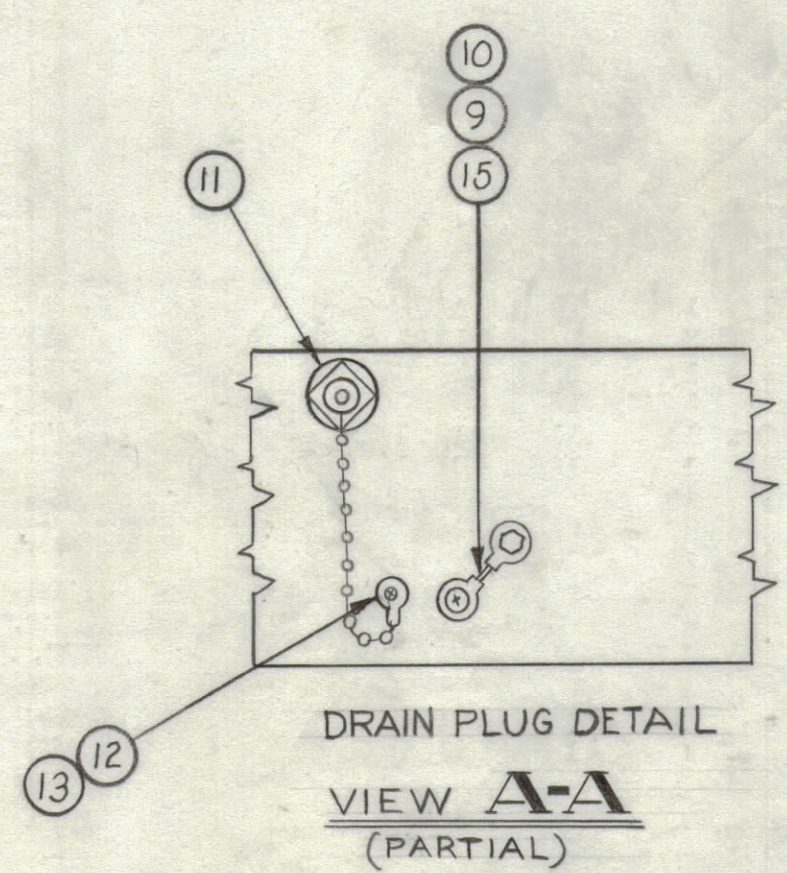
REVISIONS							
ZONE	SYM	DESCRIPTION	DATE	E.M.N. NO.	DRAFT	CHKD	APPD
#	X	EXPERIMENTAL RELEASE	4-16-64	X	A.M.		
#	O	ORIGINAL RELEASE FOR PRODUCTION	5-28-64	O	A.M.		
	A	NOTE ADDED	3-8-67	17929	MR		AB



NOTE:
CEMENT ITEM 6 (GASKET) TO ITEM 7 (COVER) WITH ITEM 14 (ADHESIVE).



TOP VIEW
(COVER REMOVED)



NOTE:
ITEM #8 SHOULD BE CA409-137-4.00 WHEN TRIG2 IS USED.

REQ'D.	ITEM	PART NUMBER	DESCRIPTION	SYMBOL
1	15	CA409-69-2.00	LEAD, ELECTRICAL	
X	14	GL101-2	ADHESIVE	
1	13	LWE06MSS	WASHER, LOCK, EXTERNAL	
1	12	SCBP0632SS3	SCREW, MACHINE	
1	11	A1291	PLUG/ CHAIN ASSEMBLY	
1	10	SCBP1032SS4	SCREW, MACHINE	
1	9	LWE10MSS	WASHER, LOCK, EXTERNAL	
2	8	CA409-137-1.50	LEAD, ELECTRICAL	
1	7	PM105	COVER	
1	6	GA103	GASKET, SQUARE	
4	5	SCHH2520SS28	BOLT, MACHINE	
4	4	PM100	NUT, PLAIN, BARREL	
4	3	FW25HSS	WASHER, FLAT	
2	2	A102	INSULATOR, FEEDTHRU	
1	1	PM392	CASE	

R.R. HAY LIST OF MATERIAL

MATERIAL: //

FINISH: //

THE TECHNICAL MATERIEL CORP.
MAMARONECK, NEW YORK

TITLE: CASE/COVER ASSEMBLY

DRAWN: AMARINO	DATE: 4-16-64	FINAL APPROVAL: [Signature]	DATE: [Blank]
CHECKED: [Signature]	DATE: 4-22-64		
ELECT. DES.:	DATE:	AX501	A
MECH. DES.:	DATE: 5/29/64		

TRC-500

Q'TY./UNIT	MODEL USED ON	ASS'Y. NO.
SCALE: //	CODE: A	

UNLESS OTHERWISE SPECIFIED DIMENSIONS ARE IN INCHES AND INCLUDE CHEMICALLY APPLIED OR PLATED FINISHES

DECIMALS: .X ± .05, .XX ± .01, .XXX ± .005

FRACTIONS: ± 1/64, ANGLES: ± 0° 30'

TOLERANCES

NOTES

THE CONTENTS OF THIS DRAWING ARE THE EXCLUSIVE PROPERTY OF THE TECHNICAL MATERIEL CORP. ITS UNAUTHORIZED USE OR REPRODUCTION IN WHOLE OR IN PART IS STRICTLY FORBIDDEN.

AX501