

THE CONTENTS OF THIS DRAWING ARE THE EXCLUSIVE PROPERTY OF THE TECHNICAL MATERIEL CORP. ITS UNAUTHORIZED USE FOR REPRODUCTION IN WHOLE OR IN PART IS STRICTLY FORBIDDEN.

REQ. PER UNIT

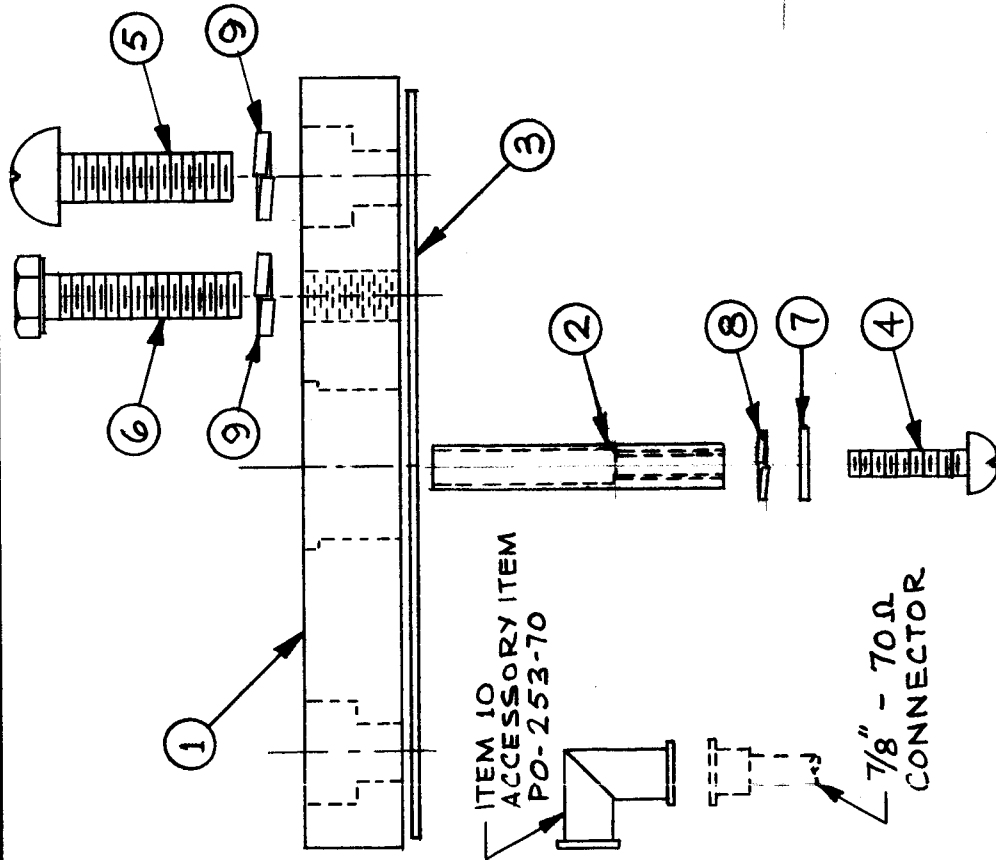
MODEL

USED ON ASS'Y. NO.

DATE
2-1-63

AX-408

A



TMC PART NO.	AS SHOWN	ITEM 10 (LOOSE ITEM)
AX-408-1	AS SHOWN	NONE
AX-408-2	AS SHOWN	PO-253-70

1	10	SEE CHART	RIGHT ANGLE, 7/8 EIA FLANGE 70Ω
7	9	LWS 25 MRN	LOCK WASHER, SPLIT
1	8	LWS08 MRN	LOCK WASHER, SPLIT
1	7	FW08 HBN	WASHER, FLAT
3	6	SCHH2520BN16	SCREW, MACHINED HEX HEAD
4	5	SCR P2520BN12	SCREW, MACHINE
1	4	SCR P0832BN10	SCREW, MACHINE
1	3	GA-154	GASKET, SILICONE
1	2	PM-707-2	ADAPTER CONTACT 70Ω
1	1	PM-822	PLATE ADAPTER CONNECTOR

REQ. ITEM	PART NO.	DESCRIPTION	SYMBOL
		MARTINENGO	
		THE TECHNICAL MATERIEL CORP. MAMARONECK, NEW YORK	
		CONNECTOR, PLATE, ASSEMBLY	
		7/8 EIA 70Ω	
		MJ TANTILO 2-1-63	
		DRAWN	CHECKED
		MECH. DES. APP.	FINAL APPROVAL
		ELEC. DES. APP.	
		FINISH & SPEC. NO.	
			AX-408 A

SYM	DESCRIPTION	DATE	CH. NO.	DRAFTS	CHECKER	ENG. APP.
A	ITEM 5 WAS SCR P2520BN12 ITEM 6 WAS SCHH2520BN16	5/25/61	10-139			

UNLESS OTHERWISE SPECIFIED
DIMENSIONS ARE IN INCHES AND INCLUDE
CHEMICALLY APPLIED OR PLATED FINISHES

DECIMALS
.X ± .05
.XX ± .01
.XXX ± .005

FRACTIONS
± 1/64
ANGLES
± 0° 30'

TOLERANCES

SCALE

CODE

THE CONTENTS OF THIS DRAWING ARE THE EXCLUSIVE PROPERTY OF THE TECHNICAL MATERIEL CORP. ITS UNAUTHORIZED USE FOR REPRODUCTION IN WHOLE OR IN PART IS STRICTLY FORBIDDEN.

REQ. PER UNIT: 1
 MODEL: TTR-10
 USED ON ASS'Y. NO.: TTRA-1
 DATE: 6-21-63

B

AX-409

ITEM NO.	SYMBOL(S)	USED TO MOUNT	QUAN.	ITEM NO.	DESCRIPTION
4	CL110, 1111, 1112, 1113	A-2697 CM45	2 4	1	23 SC1310632BN3 SCREW, MACHINE, UNDERCUT
5	CL108, 1114	A-2697 & A-2708	2	X 22 IS-100 SOLDER, SOFT	
6	CL107	A-2697	2	0-4 21 WV-100-4 WIRE, BRSS, SIZE 16	
7	CL106	A-2708	2	20 DELETED	
8	CL105	CM45	2	4 19 SCBP0632BN6 SCREW, MACHINE	
		MS-3345	2	2 18 SCBP0632BN5 SCREW, MACHINE	
		A-2697	2	2 17 SC-131-0632BN158 SCREW, MACHINE, UNDERCUT	
		A-2708	2	16 16 SC-131-0632BN5 SCREW, MACHINE, UNDERCUT	
		CM45	2	6 15 NTH0632BN8 NUT, HEX	
		MS-3349	2	10 14 LWE06MRN WASHER, LOCK, EXTERNAL	
17		CM45	2	6 13 FW06HBN WASHER, FLAT	
18		MS-3345	2	1 12 LD-1311/MS-3349 COVER, WRAPAROUND	
19		A-2697 & A-2708	2	1 11 MS-3347 COVER, IFT TANK	
		A-2697	2	1 10 MS-3346 PLATE, SIDE, LEFT	
		CM45 WIRING	0-4	1 9 MS-3345 BRACKET, CAPACITOR MOUNTING	
21		WIRING	X	1 8 CM45B561K CAPACITOR, FIXED, MICA	
22		CV113	1	1 7 CM45B391K CAPACITOR, FIXED, MICA	
23			1	1 6 CM45B331K CAPACITOR, FIXED, MICA	
			2	5 CM45B221G CAPACITOR, FIXED, MICA	
			4	4 CM45B102K CAPACITOR, FIXED, MICA	
			1	3 A-2709 CHASSIS ASSEMBLY, WRAPAROUND	
			1	2 A-2708 IFT SHIELD ASSEMBLY	
			1	1 A-2697 IFT CONTACT BOARD ASSEMBLY	

REQ. ITEM	PART NO.	DESCRIPTION	SYMBOL
		THE TECHNICAL MATERIEL CORP. MAMARONECK. NEW YORK	
		FINAL ASSEMBLY, 2-4 MC FT MODULE	
ETSA	J Medico 6/21/63	CHECKED	FINAL APPROVAL
R KOHN	16921	DRAWN	AX-409
		ELEC. DES. APP. MECH. DES. APP.	
		FINISH & SPEC. NO.	
		TYPE & TEMPER HEAT TREAT. SPEC.	
		MATERIAL	
		STOCK SIZE	
		DATE	
		CH. NO.	
		DRAFTS	
		CHECKER	
		ENG. APP.	
		SCALE	
		UNLESS OTHERWISE SPECIFIED DIMENSIONS ARE IN INCHES AND INCLUDE CHEMICALLY APPLIED OR PLATED FINISHES	
		TOLERANCES	
		FRACTIONS X ± .05 .XX ± .01 .XXX ± .005	
		± 1/64 ANGLES, ± 0° 30'	
		CODE	
		A	

ITEM NO.	SYMBOL(S)	USED TO MOUNT	QUAN.	REQ. PER UNIT	DESCRIPTION
1	23	SC131-0632BN3		1	SCREW, MACHINE, UNDERCUT
0-8	22	WL-100-4	2	0-8	WIRE, BUSS, SIZE 16
0-4	21	PX-104-1-053	2	0-4	SLEEVING, SIZE 16, BLACK
X	20	BS-100	2	X	SOLDER, SOFT
2	19	TE-117-46	2	2	SPACER, SLEEVE
2	18	TE-117-5	3	2	SPACER, SLEEVE
4	17	SCBP0632BN6	2	4	SCREW, MACHINE
2	16	SCBP0632BN5	7	2	SCREW, MACHINE
2	15	SC-131-0632BN58	2	2	SCREW, MACHINE, UNDERCUT
16	14	SC-131-0632BN5	2	16	SCREW, MACHINE, UNDERCUT
6	13	NTH0632BN8	2	6	NUT, HEX
10	12	LWE06MRN	2	10	WASHER, LOCK, EXTERNAL
4	11	FW06HBN	2	4	WASHER, FLAT
1	10	LD-1312/MS-3349	2	1	COVER, WRAPAROUND
1	9	MS-3347	X	1	COVER, IFT TANK
1	8	MS-3346	0-4	1	PLATE, SIDE, LEFT
1	7	MS-3345	0-8	1	BRACKET, CAPACITOR MOUNTING
4	6	CM45B561K	1	4	CAPACITOR, FIXED, MICA
1	5	CM45B161K	1	1	CAPACITOR, FIXED, MICA
1	4	CM45B101K	1	1	CAPACITOR, FIXED, MICA
1	3	A-2712	1	1	CHASSIS ASSEMBLY, WRAPAROUND
1	2	A-2711	1	1	IFT SHIELD ASSEMBLY
1	1	A-2697	1	1	FT CONTACT BOARD ASSEMBLY

REQ. ITEM	PART NO.	DESCRIPTION	SYMBOL
		THE TECHNICAL MATERIEL CORP. MAMARONECK. NEW YORK	B
		FINAL ASSEMBLY, 4-8. MC FT MODULE	
		ETS A J. Medico 6/2/63	
		R KOHN 6/8/63	
		TYPE & TEMPER HEAT TREAT. SPEC	
		FINISH & SPEC. NO.	
		STOCK SIZE	
		MATERIAL	
		CHECKED	
		FINAL APPROVAL	
		MECH. DES. APP.	
		ELEC. DES. APP.	

THE CONTENTS OF THIS DRAWING ARE THE EXCLUSIVE PROPERTY OF THE TECHNICAL MATERIEL CORP. ITS UNAUTHORIZED USE FOR REPRODUCTION IN WHOLE OR IN PART IS STRICTLY FORBIDDEN.		REQ. PER UNIT	MODEL	USED ON ASSY. NO.	DATE
ITEM		1	TTR-10		
NO. USED TO MOUNT QUAN.					AX-412

ITEM NO.	DESCRIPTION	REQ. PER UNIT	QUAN.	USED TO MOUNT
8	A-2697	2		
9	A-2696 & A-2697	2		
	A-2696	2		
	A-2697	2		
	A-2698	2		
	SHIELD	2		
10	A-2696	2		
	A-2697	2		
	SHIELD	2		
	A-2696	2		
	A-2698	2		
	MS-3346	3		
	MS-3347	2		
	MS-3349	7		
	SHIELD	2		
12	A-2698	2		
13	A-2696 & A-2697	2		
	A-2697	2		
14	WIRING	X		

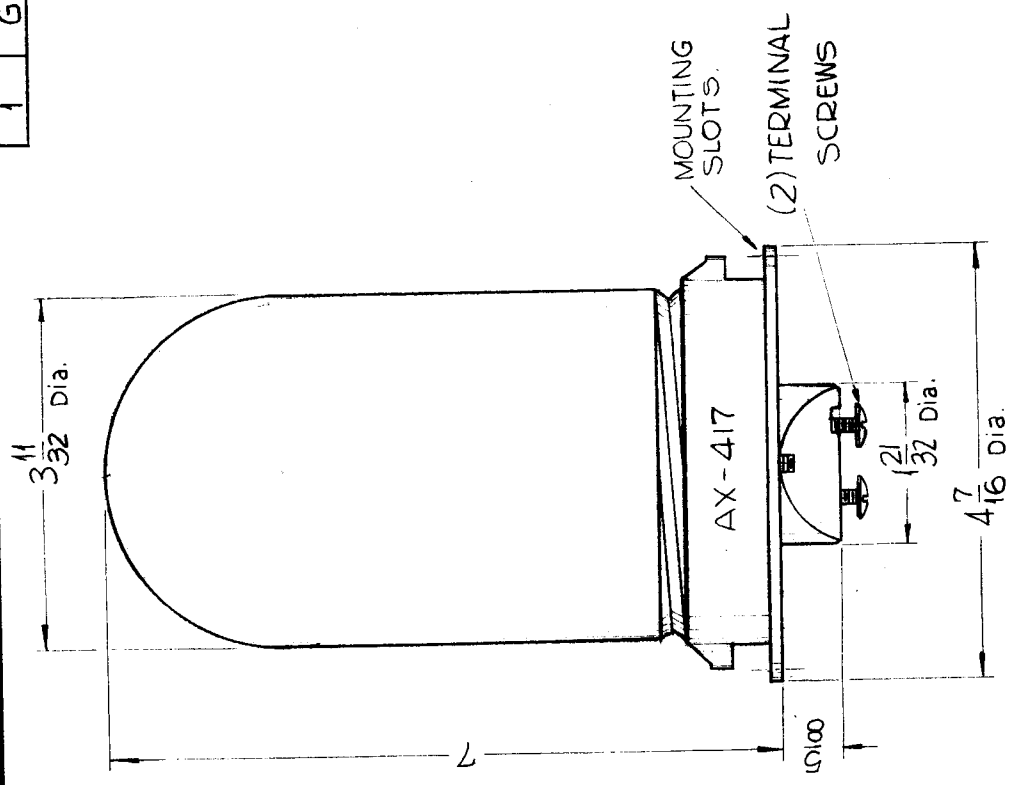
REQ. ITEM	PART NO.	DESCRIPTION	SYMBOL
X 14	BS-P00	SOLDER, SOFT	
4 13	SCBP0632BN6	SCREW, MACHINE	
2 12	SCBP0632BN5	SCREW, MACHINE	
18 11	SC-131-0632BN5	SCREW, MACHINE, UNDERCUT NUT, HEX	
6 10	NTH0632BN8	WASHER, LOCK, EXTERNAL	
10 9	LWE06MRN	WASHER, FLAT	
2 8	FW05HBN	COVER, WRAPAROUND	
1 7	LD-1313/MS-3349	COVER, IFT TANK	
1 6	MS-3347	PLATE, SIDE, LEFT	
1 5	MS-3346	BRACKET ASSEMBLY, CAPACITOR	
1 4	A-2716	CHASSIS ASSEMBLY, WRAPAROUND	
1 3	A-2715	IFT SHIELD ASSEMBLY	
1 2	A-2714	FT CONTACT BOARD ASSEMBLY	
1 1	A-2697		

THE TECHNICAL MATERIEL CORP. MAMARONECK.	THE TECHNICAL MATERIEL CORP. NEW YORK
FINAL ASSEMBLY, 16-32 MC FT MODULE	FINAL ASSEMBLY, 16-32 MC FT MODULE
ETSA	J. Medico
R KOHN	6/2/63
ELEC. DES. APP.	MECH. DES. APP.
AX-412	AX-412

AX-417 0

REQ. PER UNIT	MODEL	USED ON ASSY. NO.	DATE
1	GPT-200K	AP-109	1-21-63
1	GPT-200K	AP-111	1-21-63

THE CONTENTS OF THIS DRAWING ARE THE EXCLUSIVE PROPERTY OF THE TECHNICAL MATERIEL CORP. ITS UNAUTHORIZED USE FOR REPRODUCTION IN WHOLE OR IN PART IS STRICTLY FORBIDDEN.



ELECTRICAL SPECS:
 230 ~VOLTS
 50/60 CPS
 SINGLE PHASE
 VKR-23P
 660~WATTS
 600~VOLTS

ASSEMBLY CONSISTS OF:
 FRAME
 SOCKET
 RED GLASS LENS
 2 TERMINAL SCREWS
 GASKET

USE LAMP~BI-106-1 (GE 40-A13-240)
 SUPPLIED AS SEPARATE MAINTENANCE ITEM.

REQ. ITEM	PART NO.	F. BUDETTI	DESCRIPTION	SYMBOL		
			THE TECHNICAL MATERIEL CORP. MAMARONECK, NEW YORK			
			LAMP SOCKET ASS'Y			
		SRG	AA	AA		
		DRAWN	CHECKED	FINAL APPR VAL		
		DBB	MC 3/18/64	AX-417		
			ELEC. DES. APP.	MECH. DES. APP.		
			FINISH & SPEC. NO.			
SYM	DESCRIPTION	DATE	CH. NO.	DRAFTS	CHECKER	ENG. APP.
0	ORIGINAL RELEASE	5.16.64		JB		
	UNLESS OTHERWISE SPECIFIED DIMENSIONS ARE IN INCHES AND INCLUDE CHEMICALLY APPLIED OR PLATED FINISHES					
	TOLERANCES					
	DECIMALS					
	X ± .05					
	XX ± .01					
	.XXX ± .005					
	FRACTIONS					
	± 1/64					
	ANGLES					
	± 0° 30'					

REQ. PER UNIT	MODEL	USED ON	DATE
1	VLRA-1/AX431	ASSY. NO.	4/20/65
		AX431	

1 2 LD1347/MS3428 COV, TOP
 1 1 A5088 MODULE SUBASSY

REQ. ITEM	PART NO.	DESCRIPTION	SYMBOL
		THE TECHNICAL MATERIEL CORP. MAMARONECK, NEW YORK	
		AX431 FINAL ASSY	
		ENG COORD	
		DRAWN	
		CHECKED	
		TYPE & TEMPER	
		HEAT TREAT. SPEC.	
		FINISH & SPEC. NO.	
		ELEC. DES. APP.	
		MECH. DES. APP.	

6-7-65
 AA
 16
 SCALE
 CODE
 ORIGINAL RELEASE FOR PRODUCTION
 UNLESS OTHERWISE SPECIFIED DIMENSIONS ARE IN INCHES AND INCLUDE CHEMICALLY APPLIED OR PLATED FINISHES
 TOLERANCES
 DECIMALS
 X ± .05
 XX ± .01
 XXX ± .005
 FRACTIONS
 ± 1/64
 ANGLES
 ± 0° 30'

6-7-65
 AA
 16
 SCALE
 CODE
 ORIGINAL RELEASE FOR PRODUCTION
 UNLESS OTHERWISE SPECIFIED DIMENSIONS ARE IN INCHES AND INCLUDE CHEMICALLY APPLIED OR PLATED FINISHES
 TOLERANCES
 DECIMALS
 X ± .05
 XX ± .01
 XXX ± .005
 FRACTIONS
 ± 1/64
 ANGLES
 ± 0° 30'

6-7-65
 AA
 16
 SCALE
 CODE
 ORIGINAL RELEASE FOR PRODUCTION
 UNLESS OTHERWISE SPECIFIED DIMENSIONS ARE IN INCHES AND INCLUDE CHEMICALLY APPLIED OR PLATED FINISHES
 TOLERANCES
 DECIMALS
 X ± .05
 XX ± .01
 XXX ± .005
 FRACTIONS
 ± 1/64
 ANGLES
 ± 0° 30'

SYMBOL (S)		ITEM NO.		USED TO MOUNT		QTY	
A1		1		A3211-5 to A3410		4	
		6		CU102-3(CA792)		1	
		7		A3211-5 to A3410		4	
				A3410 to A3370		2	
		8		CU102-3(CA792)		1	
				TE104-2 WIG (A3370)		1	
		9		A3410 to A3370		2	
		10		A3211-5 to A3410		4	
		11		CU102-3(CA792)		1	

SYMBOL		ITEM NO.		USED TO MOUNT		QTY	
		1	11	A3211-5	4		
		4	10	CU102-3(CA792)	1		
		2	9	A3211-5 to A3410	4		
		1	8	A3410 to A3370	2		
		7	7	CU102-3(CA792)	1		
		5	6	TE104-2 WIG (A3370)	1		
		1	5	A3410 to A3370	2		
		4	4	A3211-5 to A3410	4		
		1	2	CU102-3(CA792)	1		
		1	1				

REQ. PER UNIT	MODEL	ASSY. NO.	DATE
1	VLRA-1/AX433		1/7/65

REQ. ITEM	PART NO.	DESCRIPTION	SYMBOL
1	SCFP0632BN7	SCREW, MACHINE	
4	SCBP0632BN8	SCREW, MACHINE	
2	SCBP0632BN5	SCREW, MACHINE	
1	PX100-1-186	INSULATION SLEEVING, SZ 5	
7	LWE06MRN	WASHER, LOCK, EXTERNAL	
5	FW06HBN	WASHER, FLAT	
1	CA792	WIRING HARNESS, BRANCHED	
4	BS100	SOLDER, TIN ALLOY	
1	A3410	CHASSIS ASSEMBLY, CAPACITOR	
1	A3370	CHASSIS ASSEMBLY, TRANSFORMER	
1	A3211-5	PC BOARD, FINAL ASSEMBLY	

REQ.	ITEM	PART NO.	DESCRIPTION	SYMBOL
			POSE	
			THE TECHNICAL MATERIEL CORP. MAMARONECK. NEW YORK	
			AX433 FINAL ASSY	

DATE	CH. NO.	DRAFTS	CHECKER	ENG. APP.
1/19/65	Ø	Ø	Ø	Ø

DATE	CH. NO.	DRAFTS	CHECKER	ENG. APP.
1-19-65			X. Gabel	
1-19-65				

TYPE & TEMPER	HEAT TREAT. SPEC.	DRAWN	CHECKED	FINAL APPROVAL

FINISH & SPEC. NO.	ELEC. DES. APP.	MECH. DES. APP.

SYMBOL(S)	ITEM NO.	USED TO MOUNT	QTY	USED ON	
				MODEL	ASS'Y. NO.
				VLRA-1/AX434	A3366
				DATE	4/20/65
					AX434

REQ. PER UNIT	1
REQ. ITEM	1
DESCRIPTION	CHAS ASSY, MAIN
PART NO.	A3559
STOCK SIZE	
MATERIAL	
HEAT TREAT. SPEC.	
TYPE & TEMPER	
FINISH & SPEC. NO.	
ELEC. DES. APP.	
MECH. DES. APP.	
CHECKED	
DRAWN	
ENG COORD	
DATE	
CHECKER	
CH. NO.	
DATE	
SCALE	
DESCRIPTION	
UNLESS OTHERWISE SPECIFIED DIMENSIONS ARE IN INCHES AND INCLUDE CHEMICALLY APPLIED OR PLATED FINISHES	
TOLERANCES	
DECIMALS	
FRACTIONS	
ANGLES	

4	11	SCBP1032BN7	SCR, MACH
4	10	SCBP0632BN4	SCR, MACH
7	9	SC131-0632BN5	SCR, MACH
7	8	NTH0632BN8	NUT, PLN, HEX
11	7	LWE06MRN	WASH., LK, EXT
	6	DELETED	
	5	DELETED	
1	4	A3369	PL ASSY, R SD
1	3	A3368	PL ASSY, L SD
1	2	A3367	PNL ASSY, FRONT
1	1	A3559	CHAS ASSY, MAIN

REQ. ITEM	DESCRIPTION	SYMBOL
	POSE	
THE TECHNICAL MATERIEL CORP. MAMARONECK. NEW YORK		
VLRA-1 SUBASSEMBLY		
4-27-65	L. Gabel	MM 5/4/65
ENG COORD	4-27-65	FINAL APPROVAL
TYPE & TEMPER	DRAWN	CHECKED
HEAT TREAT. SPEC.		
FINISH & SPEC. NO.		AX434
ELEC. DES. APP.		
MECH. DES. APP.		
CHECKER		
CH. NO.		
DATE		
SCALE		
DESCRIPTION		
UNLESS OTHERWISE SPECIFIED DIMENSIONS ARE IN INCHES AND INCLUDE CHEMICALLY APPLIED OR PLATED FINISHES		
TOLERANCES		
DECIMALS		
FRACTIONS		
ANGLES		

SYMBOL(S)	ITEM NO.	USED TO MOUNT	QTY	USED ON			
				REQ. PER UNIT	MODEL	ASSY. NO.	DATE
				TTR-10	AX436	9/16/64	AX436

REQ. PER UNIT	MODEL	ASSY. NO.	DATE
1	TTR-10	AX436	9/16/64

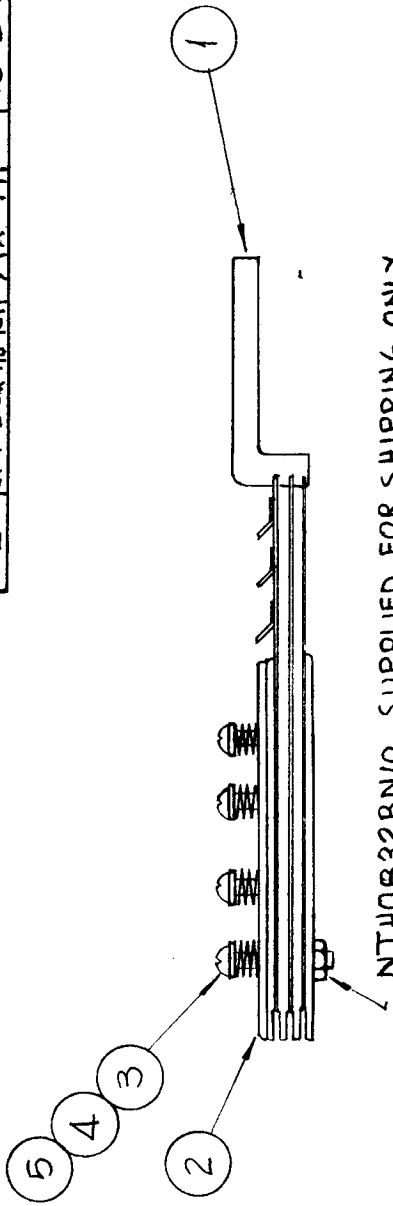
ITEM NO.	QTY	DESCRIPTION	PART NO.	SYMBOL
2	2	A2790		
		(JJ287-20)		
		MS3525		
5	2	A2790		
		(JJ287-20)		
6	6	MS3377		
7	2	MS3525		
8	2	A2790		
		(JJ287-20)		
9	2	MS3525		

REQ. ITEM	PART NO.	DESCRIPTION	SYMBOL
2	9	SCFP 0440BN4	
2	8	SCBP 0440BN8	
2	7	SCBP 0440BN4	
6	6	SC131-0440BN3	
2	5	NTH0440BN8	
1	4	MS3525	
2	3	MS3377	
4	2	LWE04MRN	
1	1	A2790	

AALTONEN		DESCRIPTION		SYMBOL	
THE TECHNICAL MATERIEL CORP.		MAMARONECK.		NEW YORK	
SERVICE EXTENSION MODULE					
16 9-76	ENG COORD	W. Jabel 9-76		RJC	
TYPE & TEMPER		HEAT TREAT. SPEC.		DRAWN	
FINISH & SPEC. NO.		CHECKED		FINAL APPROVAL	
		ELEC. DES. APP.		MECH. DES. APP.	
		AX436		AX436	

STOCK NO. 440H

REQ. PER UNIT	USED ON	MODEL	ASSY. NO.	DATE
2	6PT-200K AS-124	AX-441	AX-443	10-3-63



NTH0B32BN10 SUPPLIED FOR SHIPPING ONLY

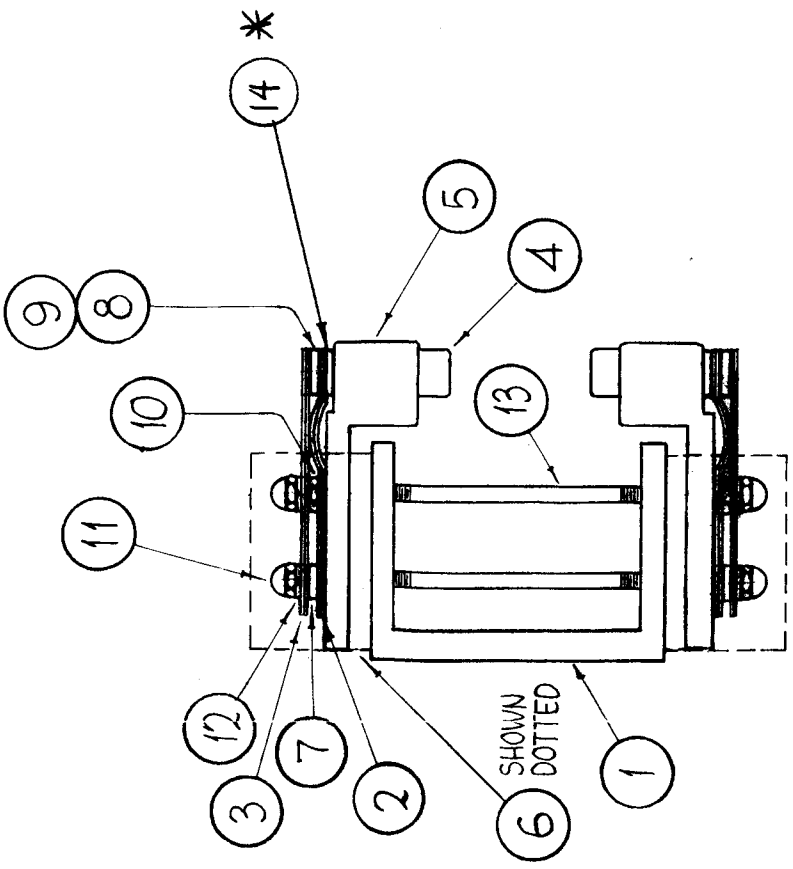
(FOR SPARE PARTS USE ONLY)

REQ. ITEM	PART NO.	DESCRIPTION	SYMBOL
8	5	SCBP0832BP20	SCREW, MACHINE
8	4	TE 184-2S	SPRING HOLDER
8	3	SP 116 S	SPRING
1	2	PM 838	RING, RETAINING
1	1	PM 841	CONTACT, WIPER
F. BUDETTI		DESCRIPTION	SYMBOL
		THE TECHNICAL MATERIEL CORP.	
		MAMARONECK. NEW YORK	
		WIPER ASS'Y.	

DATE	1/12/66	CH. NO.	5492	DRAFTS	RCB	CHECKER	RCB	ENG. APP.	RCB
SCALE	1/2" = 1"	DATE	5-16-64	DRAFTS	SRG	CHECKER	SRG	ENG. APP.	SRG
DESCRIPTION	A 27.4 WAS TE 184-2								
DESCRIPTION	O ORIG. RELEASE FOR PROD								
UNLESS OTHERWISE SPECIFIED DIMENSIONS ARE IN INCHES AND INCLUDE CHEMICALLY APPLIED OR PLATED FINISHES									
DECIMALS	.X ± .05								
	.XX ± .01								
	.XXX ± .005								
FRACTIONS	± 1/64								
	ANGLES								
	± 0° 30'								
TOLERANCES									
FINISH & SPEC. NO.									
ELEC. DES. APP.	RCB								
MECH. DES. APP.	RCB								
CHECKED	RCB								
DRAWN	RCB								
MATERIAL	SRG								
HEAT TREAT. SPEC.									
STOCK SIZE									
THE TECHNICAL MATERIEL CORP.	MAMARONECK. NEW YORK								
WIPER ASS'Y.									
FINAL APPROVAL	AX 443 A								

REQ. PER UNIT	2	MODEL	GPT-200K AS-123	USED ON	AX-448	DATE	10-23-63
		ASSY. NO.	AX-446				

AX-448 A



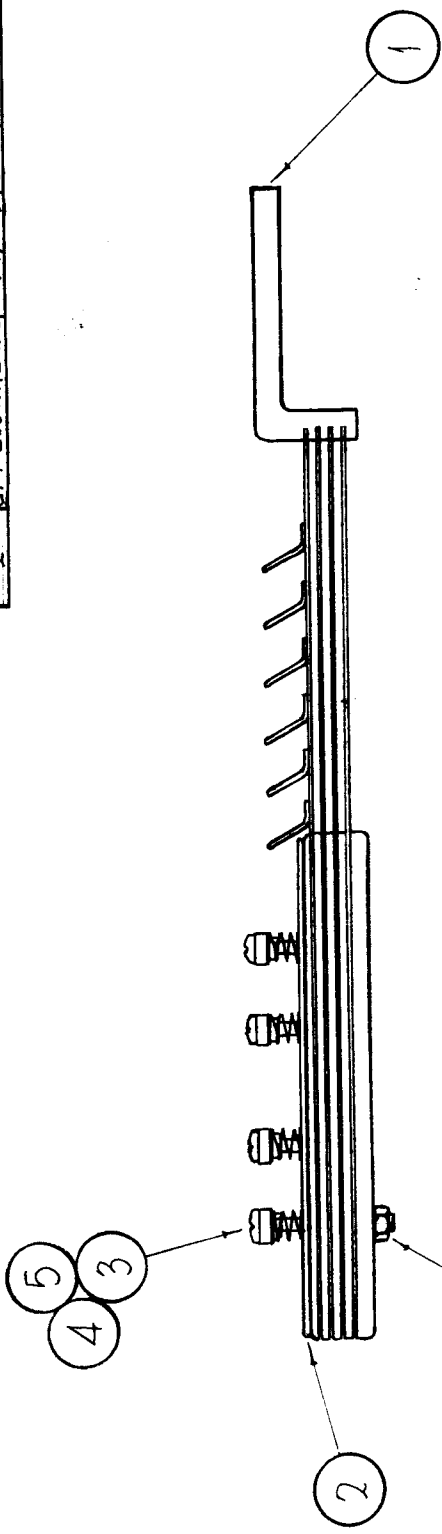
* MORE THAN 24, (IT.14) MAY BE USED AS REQ'D.

REQ. ITEM	PART NO.	DESCRIPTION	SYMBOL
24	WA-127-2	WASHER, FLAT	
6	SM-156-8	STUD, THREADED	
12	LWS10MPP	LOCKWASHER, SPLIT	
12	NTC1032BPL	NUT, CAP	
6	NTH1032BP12	NUT, HEXAGON	
6	SCFP1032BP8	SCREW, MACHINE, FLATHEAD	
6	PM-704	SPACER	
2	PM-848	CONTACT HOLDER	
2	PX-710	INSULATOR, TEFLON	
2	PM-850	CONTACT HOLDER	
6	PM-846	SLUG, CONTACT, BANDSWITCH	
12	MS-3341	SPRING, PRESSURE	
12	MS-2629-3	CONTACT, BANDSWITCH	
1	PM-888	"U" BRACKET, CONTACT & LEG MTG	

REQ. ITEM	PART NO.	DESCRIPTION	SYMBOL
		F. BUDETTI	
THE TECHNICAL MATERIEL CORP. MAMARONECK, NEW YORK			
CONTACT ASSY			
DRAWN: John C. Biele			
CHECKED: [Signature]			
ELEC. DES. APP. [Signature]			
MECH. DES. APP. [Signature]			
FINISH & SPEC. NO. AX-448			

A	II.14 & * NOTE ADDED	4-22-65	13899	JCS	ENG. APP.
O	ORIGINAL RELEASE	5-16-64		ARB	
X2	ITEM 7 (PX-769) DELETED	2-3-64			
X1	ITEM 14 CHANGED TO ITEM 7	10-30-63			
SYM	DESCRIPTION	DATE	CH. NO.	DRAFTS	CHECKER
			1/2-1"		
UNLESS OTHERWISE SPECIFIED DIMENSIONS ARE IN INCHES AND INCLUDE CHEMICALLY APPLIED OR PLATED FINISHES					
TOLERANCES					
DECIMALS					
.X ± .05					
.XX ± .01					
.XXX ± .005					
FRACTIONS ± 1/64					
ANGLES ± 0° 30'					
CODE					
SCALE					

REQ. PER UNIT: 2
 MODEL: GPT-2DOR AS-123
 USED ON: AX-446
 ASSY. N. AX-449 A
 DATE: 10-23-63

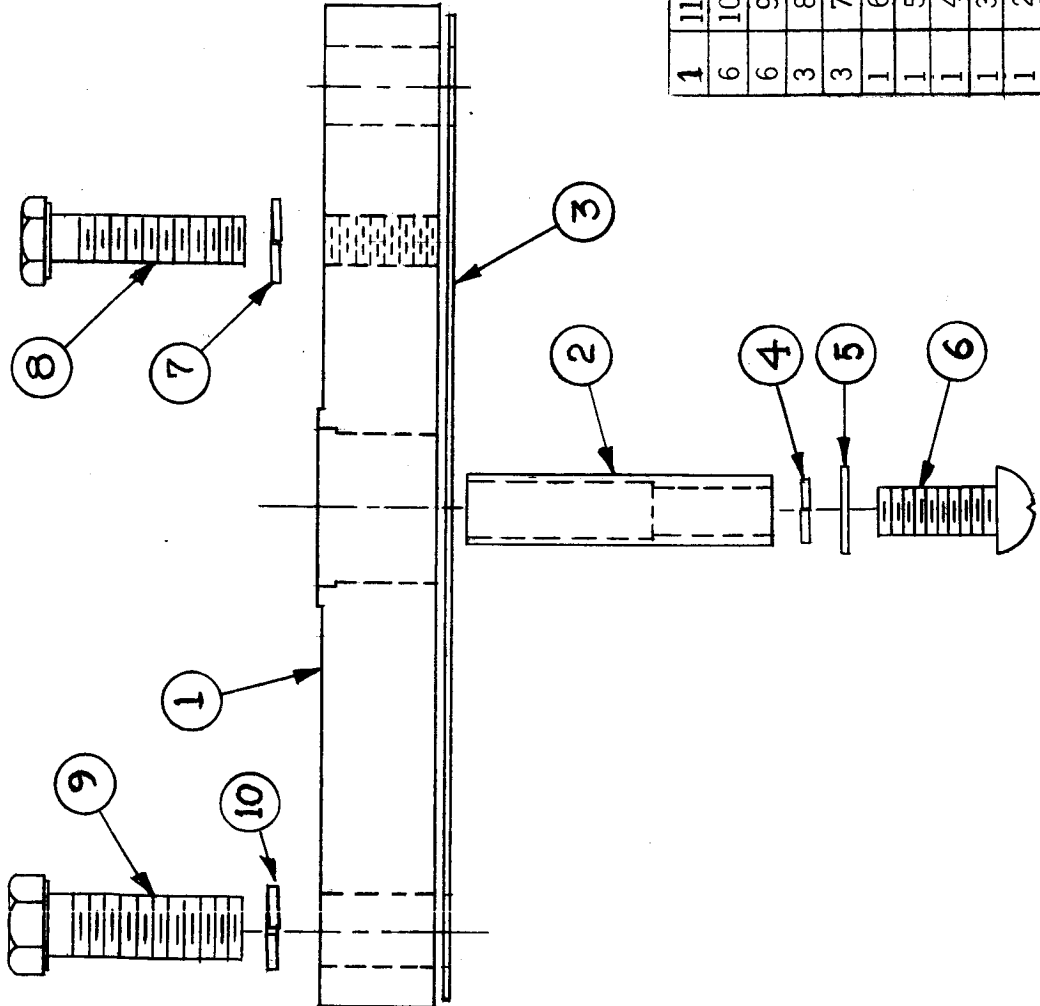


NTH0832BNG, 8DEQ
 (FOR SPARE PARTS USE ONLY)

8	5	SCBP0832BP20	SCREW, MACHINE	REQ. ITEM	PART NO.	DESCRIPTION	SYMBOL
8	4	TE 184-2S	SPACER, RIVET TYPE				
8	3	SP 116-S	SPRING, PRESSURE				
1	2	PM 849	PLATE, RETAINING, ELECTRICAL				
1	1	PM 860	CONTACT, WIPER				
				F. BUDETTI			
				THE TECHNICAL MATERIEL CORP. MAMARONECK, NEW YORK			
				WIPER ASSY			
				John C. Biele	AA PB	AK	
				DRAWN	CHECKED	FINAL APPROVAL	
				ELC. DES. APP.	MECH. DES. APP.		AX 449 A
				FINISH & SPEC. N.			

A	IT. 4 WAS TE 184-2	1/12/66	15492	R.V.	AK	AA
0	ORIGINAL RELEASE	5.16.64		AKB		
SYM	DESCRIPTION	DATE	CH. NO.	DRAFTS	CHECKER	ENG. APP.
UNLESS OTHERWISE SPECIFIED DIMENSIONS ARE IN INCHES AND INCLUDE CHEMICALLY APPLIED OR PLATED FINISHES						
SCALE: 1/2" = 1"						
TOLERANCES: ± 1/64 INCHES, ± 0° 30'						
DECIMALS: .X ± .05, .XX ± .01, .XXX ± .005						

REQ. PER UNIT	MODEL	USED ON	ASSY. NO.	DATE
			AX-452	



TMC PART No.	ITEM 2	LOOSE ITEM (II)
AX-452-1	PM-710-2	NONE
AX-452-2	PM-710-2	PO-253-50
AX 452-3	PM-710-3	NONE
AX 452-4	PM-710-3	PO-253-50

REQ. ITEM	PART NO.	DESCRIPTION	SYMBOL
1	11	See Chart	
6	10	LWS31NRN	
6	9	SCHH3113NR20	
3	8	SCHH2520NR16	
3	7	LWS25MRN	
1	6	SCRPI032BN10	
1	5	FW10HBN	
1	4	LWS10MRN	
1	3	GA-154	
1	2	SEE CHART	
1	1	PM-1035	

REQ. ITEM	PART NO.	DESCRIPTION	SYMBOL
		Adaptor, Connector	
		Lockwasher, Split	
		Screw, Machine, Hex Head	
		Screw, Machine, Hex Head	
		Lockwasher, Split	
		Screw, Machine, Round Head	
		Washer, Flat	
		Lockwasher, Split	
		Gasket, Silicone	
		Adaptor, Center Conductor	
		Plate, Adaptor	

THE TECHNICAL MATERIEL CORP. MAMARONECK, NEW YORK	CONNECTOR, PLATE, ASSEMBLY	6 1/8 To 7/8 EIA 50 OHM
M TANTILLO 2-11-63	DRWN	CHECKED
TYPE & TEMPER	HEAT TREAT. SPEC.	FINISH & SPEC. NO.
		AX-452

SYMBOL(S)	ITEM NO.	USED TO MOUNT	QTY	USED ON	
				MODEL	DATE
				MSA-1	10/13/64
					AX468

Z101	2		
	3	Z101	4
	4	Z101	4
	5	Z101	4

TMC PART NO.	ITEM 2	USED ON
AX468-1	FX183	MSA-1
AX468-2	FX182	MSA-1
AX468-3	FX184	MSA-1
AX468-4	FX185	MSA-1
AX468-5	FX212	MSAA-1
AX468-6	FX213	MSAA-1
AX468-7	FX214	MSAA-1
AX468-8	FX215	MSAA-1

- 4 5 SCBP0440BN4 SCREW, MACHINE
- 4 4 LWS04MRN WASHER, LOCK, SPLIT
- 4 3 FW04HBN WASHER, FLAT
- 2 2 SEE CHART FILTER, BP, 2.7KC BW
- 1 1 A2171-2 CHASSIS ASSEMBLY, IF

REQ. ITEM	PART NO.	DESCRIPTION	SYMBOL
		AAL-T.	
		THE TECHNICAL MATERIEL CORP.	
		MAMARONECK. NEW YORK	
		AMPLIFIER, IF	
		ENG COORD	10-22-64
		DRAWN	T. Gabriel
		CHECKED	
		FINAL APPROVAL	
		ELEC. DES. APP.	AX468
		MECH. DES. APP.	
		FINISH & SPEC. NO.	
		HEAT TREAT. SPEC.	
		MATERIAL	
		TYPE & TEMPER	
		CHECKER	
		DRAFTS	
		DATE	
		CH. NO.	
		15671	
		14322	
		Ø	
		1-31-66	
		7/7/65	
		10-29-64	
		SCALE	
		DESCRIPTION	
		UNLESS OTHERWISE SPECIFIED	
		DIMENSIONS ARE IN INCHES AND INCLUDE	
		CHEMICALLY APPLIED OR PLATED FINISHES	
		FRACTIONS	
		± 1/64	
		ANGLES	
		± 0° 30'	
		TOLERANCES	
		DECIMALS	
		.X ± .05	
		.XX ± .01	
		.XXX ± .005	

REQ. PER UNIT	USED ON	
	MODEL	ASSY. NO.
1	LFSA-1/AX471	
DATE		AX471
4/27/65		

SYMBOL(S)	ITEM NO.	USED TO MOUNT	QTY
	4	MS3421	4

4	4	SCBP0440BN4	SCR, MACH	
1	3	MS3610	COV, TOP	
1	2	MS3421	COV, SIDE	
1	1	A3587	AX471 SUBASSY	
REQ. ITEM	PART NO.	DESCRIPTION		
		PDSÉ		
STOCK SIZE		THE TECHNICAL MATERIEL CORP. MAMARONECK, NEW YORK		
MATERIAL		SPECTRUM GENERATOR MODULE		
TYPE & TEMPER		4-27-65	R. Goble	5/4/65
HEAT TREAT. SPEC.		ENG COORD	9-27-65	FINAL APPROVAL
FINISH & SPEC. NO.		DRAWN	CHECKED	
		ELEC. DES. APP.	MECH. DES. APP.	AX471

ORIGINAL RELEASE FOR PRODUCTION

DATE: 4-30-65

SCALE: _____

DESCRIPTION: _____

CHECKER: _____

DRAFTS: CJL

CH. NO.: _____

ENG. APP.: _____

UNLESS OTHERWISE SPECIFIED DIMENSIONS ARE IN INCHES AND INCLUDE CHEMICALLY APPLIED OR PLATED FINISHES

TOLERANCES: DECIMALS ± .005, .XX ± .01, .XXX ± .005

FRACTIONS ± 1/64, ANGLES ± 0° 30'

SYMBOL(S)	ITEM NO.	USED TO MOUNT	QTY
	4	MS3421	4

REQ. PER UNIT	MODEL	USED ON	DATE
1	IESA-1/AX473	ASSY. NO.	4/27/65
			AX473

REQ. ITEM	PART NO.	DESCRIPTION	SYMBOL
4	SCBP0440BN4	SCR, MACH	
1	MS3610	COV, TOP	
1	MS3421	COV, SIDE	
1	A3586	AX473 SUBASSY	
		POSE	
		THE TECHNICAL MATERIEL CORP. MAMARONECK, NEW YORK	
		1/10 MIXER MODULE	
		4-27-65	
		ENG COORD	
		DRAWN	
		CHECKED	
		HEAT TREAT. SPEC.	
		FINISH & SPEC. NO.	
		ELEC. DES. APP.	
		MECH. DES. APP.	
		FINAL APPROVAL	

ORIGINAL RELEASE FOR PRODUCTION
 DATE: 4-30-65
 SCALE: CJL
 CHECKER: [Signature]
 UNLESS OTHERWISE SPECIFIED DIMENSIONS ARE IN INCHES AND INCLUDE CHEMICALLY APPLIED OR PLATED FINISHES
 TOLERANCES: DECIMALS ± .05, FRACTIONS ± 1/64, ANGLES ± 0° 30'

SYMBOL(S)	ITEM NO.	USED TO MOUNT	QTY
	4	MS3421	4

REQ. PER UNIT 1	MODEL FSA-1/AX475	USED ON ASS'Y. NO.	DATE 4/27/65
	AX475		

4	4	SCBP0440BN4	SCR, MACH	
1	3	MS3610	COV, TOP	
1	2	MS3421	COV, SIDE	
1	1	A3642	AX475 SUBASSY	
REQ. ITEM	PART NO.	DESCRIPTION		
		THE TECHNICAL MATERIEL CORP. MAMARONECK. NEW YORK		
		PHASE DETECTOR MODULE		
		STOCK SIZE		
		MATERIAL		
		4-27-65 ENG COORD	x. globe 4-27-65	5/4/65
		TYPE & TEMPER	DRAWN	CHECKED
		HEAT TREAT. SPEC.		FINAL APPROVAL
		FINISH & SPEC. NO.		
		ELEC. DES. APP. MECH. DES. APP.		
		AX475		

DATE	4-24-65	DRAFTS	CJL	CHECKER	ENG. APP.
SCALE					
DESCRIPTION	ORIGINAL RELEASE FOR PRODUCTION				
UNLESS OTHERWISE SPECIFIED DIMENSIONS ARE IN INCHES AND INCLUDE CHEMICALLY APPLIED OR PLATED FINISHES					
TOLERANCES	FRACTIONS ± 1/64 ANGLES ± 0° 30'				
DECIMALS	X ± .05 XX ± .01 XXX ± .005				

SYMBOL(S)	ITEM NO.	USED TO MOUNT	QTY	REQ. PER UNIT	MODEL	USED ON
					LESA-1/AX495	ASS'Y. NO.
				1		DATE
						1/7/65
						AX495

SYMBOL(S)	ITEM NO.	USED TO MOUNT	QTY	REQ. PER UNIT	MODEL	USED ON
	5	A3584	2	1	LESA-1/AX495	AX495
	6	A3584	2	1	LESA-1/AX495	AX495
	8	A3585	2	1	LESA-1/AX495	AX495
	8	MS3607	8	1	LESA-1/AX495	AX495
	9	A3585	2	1	LESA-1/AX495	AX495
	10	A3584	2	1	LESA-1/AX495	AX495
	11	A3584	2	1	LESA-1/AX495	AX495

REQ. ITEM	PART NO.	DESCRIPTION	SYMBOL
2	11	SCFP0440BN4	
2	10	SCBP0440BN5	
2	9	SCBP0440BN4	
8	8	SC131-0440BN3	
2	7	MS3607	
4	6	LWE04MRN	
2	5	FW04HBN	
	4	BS100	
1	3	A3585	
1	2	A3584	
1	1	A3583	

SCREW, MACHINE
 SCREW, MACHINE
 SCREW, MACHINE
 SCREW, MACHINE - UNDERCUT
 COVER, SIDE
 WASHER, LOCK, EXTERNAL
 WASHER, FLAT
 SOLDER, TIN ALLOY
 PLATE ASSEMBLY, REAR
 CAPACITOR BOARD ASSEMBLY
 CHASSIS ASSEMBLY

POSE	DESCRIPTION	SYMBOL
	THE TECHNICAL MATERIEL CORP. MAMARONECK, NEW YORK	
	AX495 FINAL ASSY	
	SPECTRUM FILTER	
1-19-65 ENG COORD	<i>R. Gabriel</i> 1-19-65	
DRAWN	CHECKED	FINAL APPROVAL
		AX495
ELEC. DES. APP.	MECH. DES. APP.	
FINISH & SPEC. NO.		

ORIGINAL RELEASE FOR PRODUCTION
 DATE: 1-19-65
 CH. NO. 0
 DRAFTS 92
 CHECKER *KB*
 ENG. APP.
 SCALE
 UNLESS OTHERWISE SPECIFIED DIMENSIONS ARE IN INCHES AND INCLUDE CHEMICALLY APPLIED OR PLATED FINISHES
 TOLERANCES
 DECIMALS
 .X ± .05
 .XX ± .01
 .XXX ± .005
 FRACTIONS
 ± 1/64
 ANGLES
 ± 0° 30'