

REQ. PER UNIT	USED ON		DATE
	MODEL	ASSY. NO.	
		AX303	

SYMBOL(S)	ITEM NO.	USED TO MOUNT	QTY
	3	ITEM 2	4
	4	ITEM 2	4

TMC PART NUMBER	ITEM 2	USED ON MODELS	ITEM 1	FREQ.
AX303	FX168	HFI-1 SBS-1	A2171	3.5 KC
AX303-2	FX231	SBS-7	A5250	3.5 KC
AX303-3	FX183	HFI-2	A2171	3 KC

REQ. ITEM	PART NO.	DESCRIPTION	SYMBOL
5	BS100	SOLDER, TIN ALLOY	
4	SCBP044-0BN5	SCREW, MACHINE	
4	LWS04MRN	WASHER, LOCK, SPLIT	
1	SEE CHART	FILTER, BANDPASS, USB	Z1
1	SEE CHART	CHAS ASSY, IF	

REQ. ITEM	PART NO.	DESCRIPTION	SYMBOL
		LAUNSBY	
		THE TECHNICAL MATERIEL CORP. MAMARONECK. NEW YORK	
		AMPLIFIER, IF, USB	
		ENG. COORD 5-15-64	
		DRAWN Jed	
		CHECKED K. Sobel	
		FINAL APPROVAL	
		AX303	B

SYMBOL(S)	ITEM NO.	USED TO MOUNT	QTY	REQ. PER UNIT	MODEL	USED ON ASSY. NO.	DATE
	3	ITEM 2	4				
	4	ITEM 2	4				
						AX304	

TMC PART NUMBER	ITEM 2	USED ON MODELS	ITEM 1	FREQ.
AX304	FX169	HFI-1 SBS-1	A2171	3.5KC
AX304-2	FX230	SBS-7	A5250	3.5KC
AX304-3	FX184	HFIR-2	A2171	3KC

REQ. ITEM	PART NO.	DESCRIPTION	SYMBOL
5	BS100	SOLDER, TIN ALLOY	
4	SCBP0440BN5	SCREW, MACHINE	
4	LWS04MRN	WASHER, LOCK, SPLIT	
1	SEE CHART	FILTER, BANDPASS, LSB	Z1
1	SEE CHART	CHAS ASSY, IF	
		LAWNSBY	
		THE TECHNICAL MATERIEL CORP. MAMARONECK. NEW YORK	
		AMPLIFIER, IF, LSB	

ENG COORD	7. SABATINO	5-15-64	5-15-64
DRAWN	HECKED	FINAL APPROVAL	
TYPE & TEMPER	HEAT TREAT. SPEC.		
FINISH & SPEC. NO.	ELEC. DES. APP.	MECH. DES. APP.	AX304

SYMBOL(S)	ITEM NO.	USED TO MOUNT	QTY	REQ. PER UNIT	MODEL	USED ON ASS'Y. NO.	DATE	AX305	B
	3	ITEM 2	4						
	4	ITEM 2	4						

TMC PART NUMBER	ITEM 2	USED ON MODELS	ITEM 1	FREQ.
AX305	FX173	HFI-1 SBS-1	A2173	7.5 KC
AX305-2	FX227	SBS-7	A5251	7.5 KC
AX305-3	FX171	HFIR-2	A2173	6 KC

- | REQ. ITEM | PART NO.    | DESCRIPTION         | SYMBOL |
|-----------|-------------|---------------------|--------|
| 5         | BS100       | SOLDER, TIN ALLOY   |        |
| 4         | SCBP0440BN5 | SCREW, MACHINE      |        |
| 4         | LWS04MRN    | WASHER, LOCK, SPLIT |        |
| 1         | SEE CHART   | FILTER, BANDPASS,   | LSB    |
| 1         | SEE CHART   | CHAS ASSY, IF       | Z1     |

REQ. ITEM	PART NO.	DESCRIPTION	SYMBOL
LANSBY			
THE TECHNICAL MATERIEL CORP.			
MAMARONECK. NEW YORK			
AMPLIFIER, IF, LSI			

ENG COORD	J. SAGATINGO
5-15-64	5-15-64
DRAWN	CHECKED
J. S.	F. Sabel
ELEC. DES. APP. MECH. DES. APP.	
AX305	B

UNLESS OTHERWISE SPECIFIED DIMENSIONS ARE IN INCHES AND INCLUDE CHEMICALLY APPLIED OR PLATED FINISHES

FRACTIONS ± 1/64 ANGLES ± 0° 30'

DECIMALS  
X ± .05  
XX ± .01  
XXX ± .005

TOLERANCES

SCALE

DATE

CH. NO.

DRAFTS

CHECKER

ENG. APP.

TYPE & TEMPER

HEAT TREAT. SPEC.

FINISH & SPEC. NO.

REQ. PER UNIT	USED ON		DATE
	MODEL	ASSY. NO.	
			AX306

SYMBOL(S)	ITEM NO.	USED TO MOUNT	QTY
	3	ITEM 2	4
	4	ITEM 2	4

TMC PART NUMBER	ITEM 2	USED ON MODELS	ITEM 1	FREQ.
AX306	FX172	HFI-1 SBS-1	A2173	7.5 KC
AX306-2	FX228	SBS-7	A5251	7.5 KC
AX 306-3	FX170	HFIR-2	A2173	6 KC

REQ. ITEM	PART NO.	DESCRIPTION	SYMBOL
5	BS100	SOLDER, TIN ALLOY	
4	SCBP0440BN5	SCREW, MACHINE	
4	LWS04MRN	WASHER, LOCK, SPLIT	
1	SEE CHART	FILTER, BANDPASS	USB
1	SEE CHART	CHAS ASSY, IF	Z1

REQ. ITEM	PART NO.	DESCRIPTION	SYMBOL
		<b>LAWNSBY</b>	
		<b>THE TECHNICAL MATERIEL CORP.</b>	
		MAMARONECK.	
		AMPLIFIER, IF, USB	

ENG COORD	J. SABATINO
DRAWN	5-15-64
CHECKED	
HEAT TREAT. SPEC.	
FINISH & SPEC. NO.	AX306

SCALE	
DESCRIPTION	ADD. FREQ. COLUMN'S ADD. PIN AX 306-3
DATE	1/31/66
CH. NO.	15671
DRAFTS	H.A. J.C.B.
CHECKER	J.C.B.
ENG. APP.	
DESCRIPTION	B/M'S SYM. CHART REVISED PIN CHART ADDED.
DATE	19/12/65
CH. NO.	1988
DRAFTS	H.V.
CHECKER	J.C.B.
ENG. APP.	
UNLESS OTHERWISE SPECIFIED DIMENSIONS ARE IN INCHES AND INCLUDE CHEMICALLY APPLIED OR PLATED FINISHES	
FRACTIONS	± 1/64
ANGLES	± 0° 30'
DECIMALS	.XX ± .01
	.XXX ± .005

SYMBOL(S)	ITEM NO.	USED TO MOUNT	QTY	USED ON	
				MODEL	ASSY. NO.
	3	FX174	4	HFI-1	AX311
	4	FX174	4		

REQ. PER UNIT	REQ. ITEM	PART NO.	DESCRIPTION	SYMBOL
1	5	BS100	SOLDER, TIN ALLOY	
	4	SCBP0440BN5	SCREW, MACHINE	
	4	LWS04MRN	WASHER, LOCK, SPLIT	
	1	FX174	FILTER, BANDPASS, 6KC, SYMMETRICAL Z1	
	1	A2173	CHAS ASSY, IF	

LADNBY		DESCRIPTION		SYMBOL	
THE TECHNICAL MATERIEL CORP.		MAMARONECK.		NEW YORK	
AMPLIFIER, IF, SYMMETRICAL, 6KC					
ENG COORD	J. SABBATING				
5-15-64	5-15-64				
DRAWN	CHECKED	FINAL APPROVAL			
Y E J	R. S. SIDA	AX311			
FINISH & SPEC. NO.		ELEC. DES. APP.		MECH. DES. APP.	

SYMBOL(S)	ITEM NO.	USED TO MOUNT	QTY	USED ON		
				REQ. PER UNIT	MODEL	ASSY. NO.
	3	FX175	4	HPI-1	AX312	AX312
	4	FX175	4			

REQ. ITEM	PART NO.	DESCRIPTION	SYMBOL
5	BS100	SOLDER, TIN ALLOY	
4	SCBP0440BN5	SCREW, MACHINE	
4	LWS04MRN	WASHER, LOCK, SPLIT	
1	FX175	FILTER, BANDPASS, IKC, SYMMETRICAL Z1	
1	A2173	CHAS ASSY, IF	

LAWNSBY		DESCRIPTION		SYMBOL	
		THE TECHNICAL MATERIEL CORP.		NEW YORK	
		AMPLIFIER, IF, SYMMETRICAL, IKC			
ENG CORR'D		7. SABATINO			
5-15-64		5-15-64			
DRAWN		CHECKED		FINAL APPROVAL	
TYPE & TEMPER		HEAT TREAT. SPEC.			
FINISH & SPEC. NO.		ELEC. DES. APP.		MECH. DES. APP.	
		L. J. Sabell		AX312	

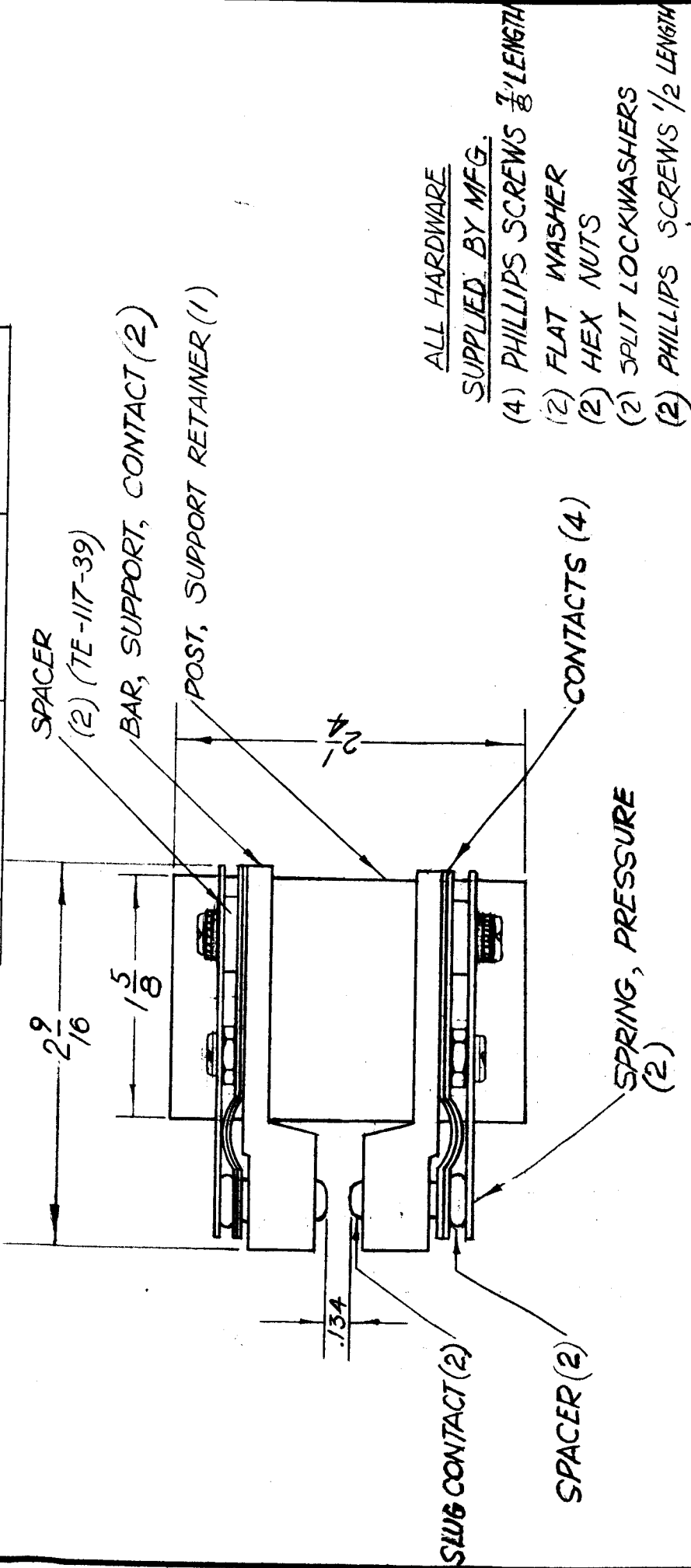


THE CONTENTS OF THIS DRAWING ARE THE EXCLUSIVE PROPERTY OF THE TECHNICAL MATERIEL CORP. ITS UNAUTHORIZED USE OR REPRODUCTION IN WHOLE OR IN PART IS STRICTLY FORBIDDEN.

REQ. PER UNIT	MODEL	USED ON
6	GPT-40K ( ) 3	ASS'Y. NO. AX-353
7	GPT-40K ( ) 4	AX-458

DATE
2-5-62
12-23-63

AX-339 C



REQ. ITEM	PART NO.	DESCRIPTION	SYMBOL
		THE TECHNICAL MATERIEL CORP.	
		MAMARONECK, NEW YORK	
		CONTACT ASS'Y.	
TYPE & TEMPER	MEAT TREAT. SPEC.	DRAWN	CHECKED
FINISH & SPEC. NO.		ELEC. ENG. APP. CHECKED BY APP.	FINAL APPROVAL
		K.C. Sh	RUBED
			9/21
			AX-339 C

DATE	CH. NO.	DRAFTS	CHECKER	ENG. APP.
12/23/63	10692	VR-R	VR-R	
2-9-63	8135			
6/5/62	6749			
SCALE: (2A-2251)				
UNLESS OTHERWISE SPECIFIED:				
DIMENSIONS ARE IN INCHES				
TOLERANCES ON				
FRAC. ± 1/4 DEC. ± .005 ANGLES ± 1/2°				
MAXIMUM ALLOWABLE TOLERANCES HAVE BEEN DETERMINED AND ANY DEVIATIONS WILL BE CAUSE FOR REJECTION.				
REMOVE ALL BURRS AND SHARP EDGES				

C DWG UPDATED  
 B PICTORIAL CLARIFIED  
 AS PER A-2251  
 CLARIFIED PICTORIAL SCREWHEADS AT BOTTOM WITH NUTS  
 SPLIT LOCK WASHERS AND SPLIT FLAT WASHER WAS 2 REG  
 PHILLIP SCREWS 1/2 LENGTH



THE CONTENTS OF THIS DRAWING ARE THE EXCLUSIVE PROPERTY OF THE TECHNICAL MATERIEL CORP. ITS UNAUTHORIZED USE OR REPRODUCTION IN WHOLE OR IN PART IS STRICTLY FORBIDDEN.

REQ. PER UNIT

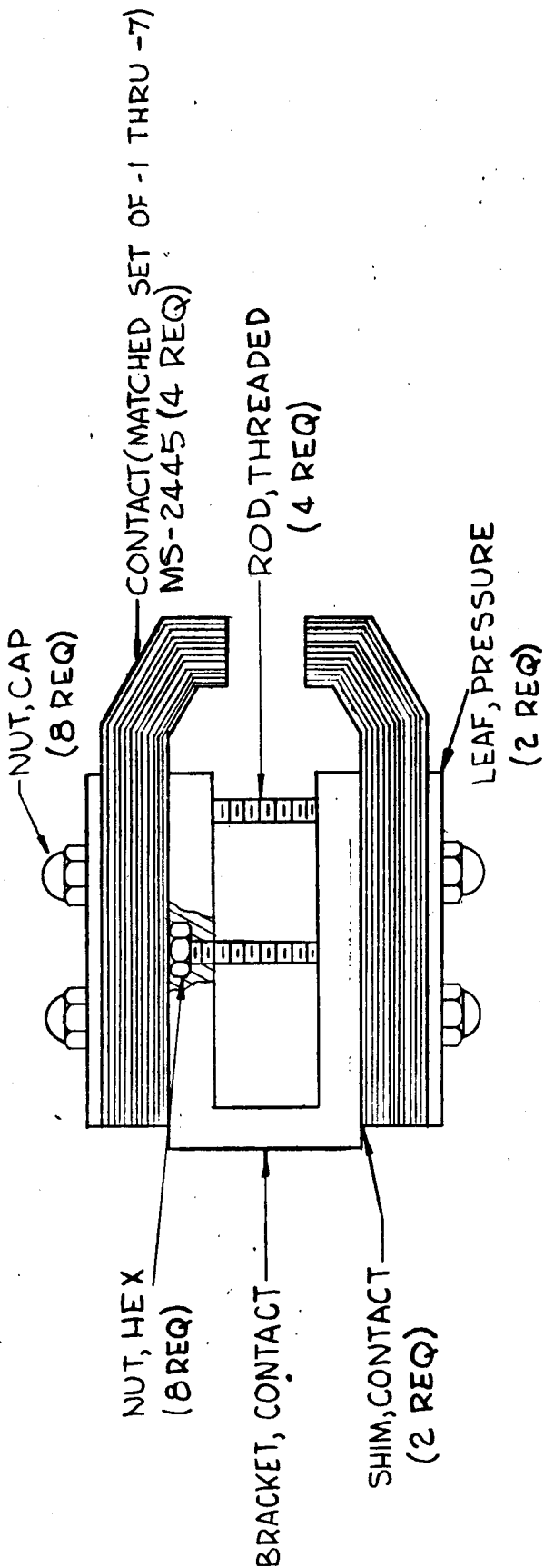
MODEL  
GPT-40K

USED ON  
ASSY. NO.

AX-352

DATE

4-4-62



FOR SPARE PARTS USE ONLY

REQ. ITEM	PART NO.	BUDETTI DESCRIPTION	SYMBOL
		THE TECHNICAL MATERIEL CORP. MAMARONECK, NEW YORK	
		CONTACT ASS'Y. ELECTRICAL (19-28 MC BAND)	
		EA	EA
		DRAWN	CHECKED
		6AB	92B
		ELEC. DES. APP. MECH. DES. APP.	FINAL APPROVAL
		FINISH & SPEC. NO.	AX-352

SYM	DESCRIPTION	DATE	CH. NO.	DRAFTS	CHECKER	ENG. APP.
	UNLESS OTHERWISE SPECIFIED: DIMENSIONS ARE IN INCHES TOLERANCES ON FRAC. ± 1/64 DEC. ± .005 ANGLES ± 1/2°					
	SCALE: 2A-2432					
	MAXIMUM ALLOWABLE TOLERANCES HAVE BEEN DETERMINED AND ANY DEVIATIONS WILL BE CAUSE FOR REJECTION. REMOVE ALL BURRS AND SHARP EDGES					

THE CONTENTS OF THIS DRAWING ARE THE EXCLUSIVE PROPERTY OF THE TECHNICAL MATERIEL CORP. ITS UNAUTHORIZED USE OR REPRODUCTION IN WHOLE OR IN PART IS STRICTLY FORBIDDEN.

REQ. PER UNIT	MODEL	USED ON	DATE
1	GPT-10KR	ASSY. NO.	
1	GPT-40KE		

AX-356

THIS NUMBER, AX-356, IS ASSIGNED FOR NOMENCLATURE PURPOSES ONLY FOR THE SYNTHESIZED AUXILIARY FRAME ASSEMBLY OF T M C MODEL GPT-10KR AND GPT-40KE.

AX-356 CONSISTS OF:

AX-239

AX-107

DO NOT ISSUE

REF: SIGNAL CORPS

REQ. ITEM	PART NO.	DESCRIPTION	SYMBOL
		THE TECHNICAL MATERIEL CORP. MAMARONECK. NEW YORK	
		AUXILIARY FRAME FINAL ASSEMBLY (SYNTHESIZED)	
		MATERIAL	
		TYPE & TEMPER	DRAWN
		HEATTREAT.SPEC.	CHECKED
		FINISH & SPEC. NO.	FINAL APPROVAL
			AX-356

UNLESS OTHERWISE SPECIFIED:

DIMENSIONS ARE IN INCHES  
TOLERANCES ON  
FRAC.  $\pm 1/64$  DEC.  $\pm .005$  ANGLES  $\pm 1/2^\circ$

SCALE:

MAXIMUM ALLOWABLE TOLERANCES HAVE BEEN DETERMINED AND ANY DEVIATIONS WILL BE CAUSE FOR REJECTION.  
REMOVE ALL BURRS AND SHARP EDGES

*Handwritten signatures and initials*

THE CONTENTS OF THIS DRAWING ARE THE EXCLUSIVE PROPERTY OF THE TECHNICAL MATERIEL CORP. ITS UNAUTHORIZED USE OR REPRODUCTION IN WHOLE OR IN PART IS STRICTLY FORBIDDEN.

REQ. PER UNIT

MODEL  
GPT-10KR

USED ON  
ASS'Y. NO.

DATE

AX-357

THIS NUMBER, AX-357, IS ASSIGNED FOR NOMENCLATURE PURPOSES ONLY FOR THE SYNTHESIZED TRANSMITTER, GPT-10KR, CABINET - POWER SUPPLY GROUP.

AX-357 CONSISTS OF:

- AX-356
- AX-186
- AX-227

DO NOT ISSUE

REF: SIGNAL CORPS

REQ. ITEM	PART NO.	DESCRIPTION	SYMBOL
		THE TECHNICAL MATERIEL CORP. MAMARONECK. NEW YORK	
		STOCK SIZE	
		MATERIAL	
		CABINET - POWER SUPPLY	
SYM	DESCRIPTION	CHECKER	ENG. APP.
	DATE	CH. NO.	DRAFTS
	SCALE:		
UNLESS OTHERWISE SPECIFIED: DIMENSIONS ARE IN INCHES TOLERANCES ON FRAC. ± 1/64 DEC. ± .005 ANGLES ± 1/2°			
	TYPE & TEMPER	HEAT TREAT. SPEC.	DRAWN
			203
	FINISH & SPEC. NO.	ELEC. DES. APP.	MECH. DES. APP.
		CHECKED	FINAL APPROVAL
			AX-357

THE CONTENTS OF THIS DRAWING ARE THE EXCLUSIVE PROPERTY OF THE TECHNICAL MATERIEL CORP. ITS UNAUTHORIZED USE OR REPRODUCTION IN WHOLE OR IN PART IS STRICTLY FORBIDDEN.

REQ. PER UNIT  
1

MODEL  
GPT-40KE

USED ON  
DATE

AX-358

THIS NUMBER, AX-358, IS ASSIGNED FOR NOMENCLATURE PURPOSES ONLY FOR THE SYNTHESIZED TRANSMITTER, GPT-40KE, CABINET - POWER SUPPLY GROUP.

AX-358 CONSISTS OF:

- AX-356
- AX-186
- AX-214
- AP-106
- AP-103

DO NOT ISSUE

REF: SIGNAL CORPS

SYM	DESCRIPTION	DATE	CH. NO.	DRAFTS	CHECKER	ENG. APP.	REQ. ITEM	PART NO.	DESCRIPTION	SYMBOL
									THE TECHNICAL MATERIEL CORP. MAMARONECK, NEW YORK	
								STOCK SIZE		
								MATERIAL	CABINET - POWER SUPPLY	
								TYPE & TEMPER	DRAWN	CHECKED
								HEATTREAT. SPEC.	<i>BB</i>	FINAL APPROVAL
								FINISH & SPEC. NO.		AX-358

UNLESS OTHERWISE SPECIFIED:

DIMENSIONS ARE IN INCHES  
TOLERANCES ON  
FRAC. ± 1/64 DEC. ± .005 ANGLES ± 1/2°

SCALE:

MAXIMUM ALLOWABLE TOLERANCES HAVE BEEN DETERMINED AND ANY DEVIATIONS WILL BE CAUSE FOR REJECTION.  
REMOVE ALL BURRS AND SHARP EDGES

THE CONTENTS OF THIS DRAWING ARE THE EXCLUSIVE PROPERTY OF THE TECHNICAL MATERIEL CORP. ITS UNAUTHORIZED USE OR REPRODUCTION IN WHOLE OR IN PART IS STRICTLY FORBIDDEN.

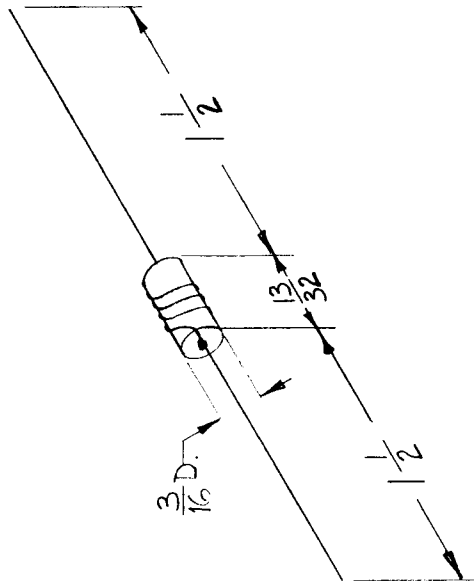
REQ. PER UNIT  
2

MODEL  
TTR-10

USED ON  
ASSY. NO. A-3279

DATE  
9-24-62

AX-391



FORM ~ RC42 GF470K  
TURNS ~ 4 TURNS OF # 16 WIRE

REQ. ITEM	PART NO.	DESCRIPTION	SYMBOL
		R. KOHN	
		THE TECHNICAL MATERIEL CORP.	
		MAMARONECK, NEW YORK	
		SUPPRESSOR, PARASITIC	
		W.A. Franco	9/14/63
		DRAWN	9-12-63
		CHECKED	R. Kohn
		HEATTREAT. SPEC.	9-12-63
		FINISH & SPEC. NO.	AX-391
		MECH. DES. APP.	
		FINAL APPROVAL	

UNLESS OTHERWISE SPECIFIED: **A**  
 DIMENSIONS ARE IN INCHES  
 TOLERANCES ON  
 FRAC.  $\pm 1/64$  DEC.  $\pm .005$  ANGLES  $\pm 1/2^\circ$   
 SCALE: Do Not Scale (1A-154G-3)  
 MAXIMUM ALLOWABLE TOLERANCES HAVE BEEN DETERMINED AND ANY DEVIATIONS WILL BE CAUSE FOR REJECTION.  
 REMOVE ALL BURRS AND SHARP EDGES