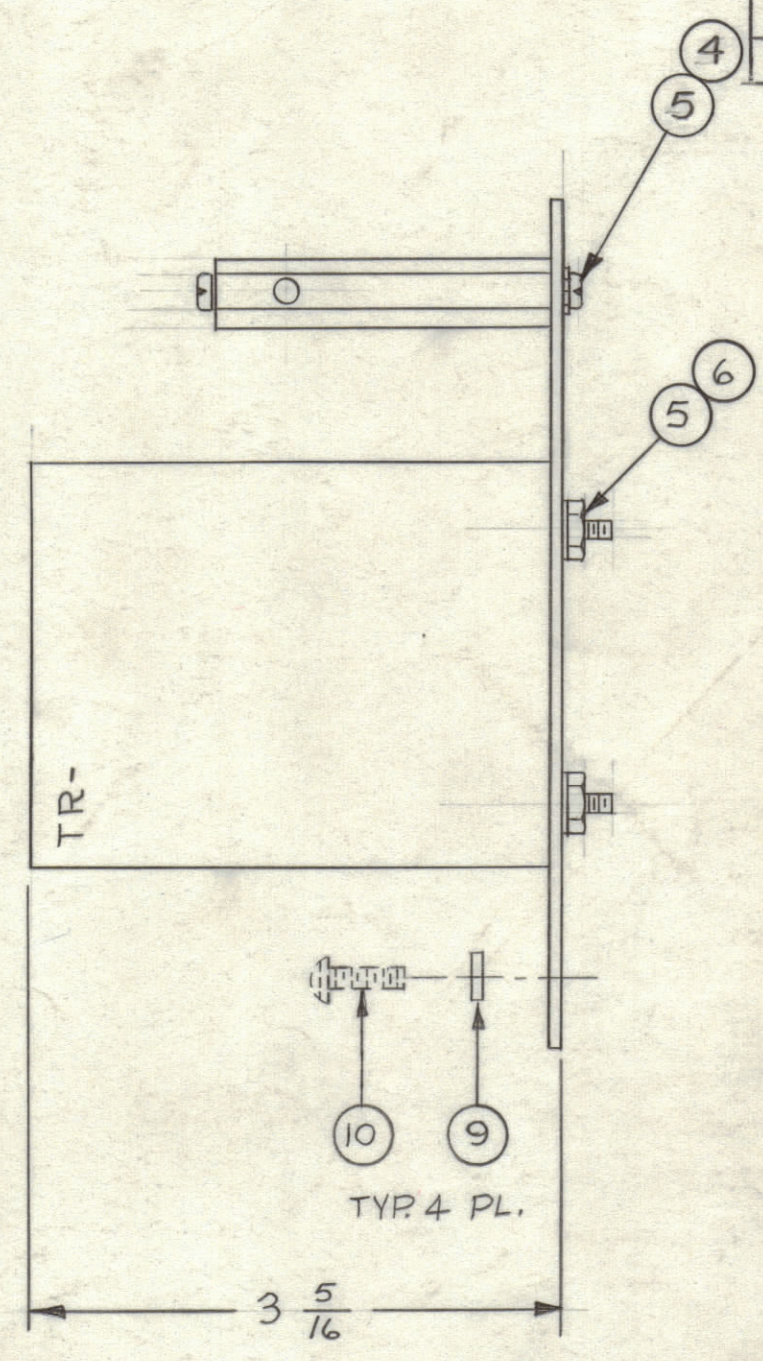
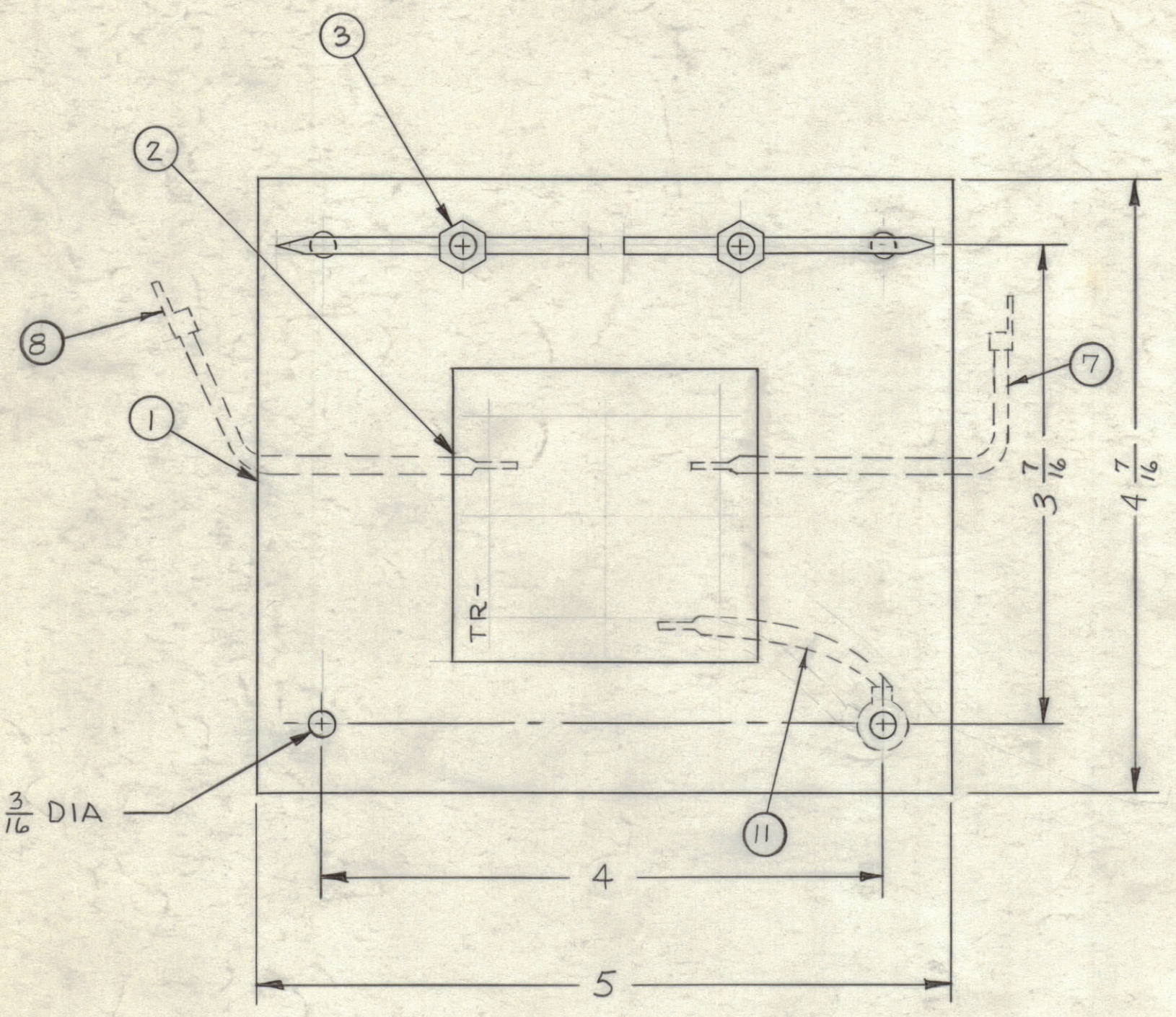


REVISIONS							
ZONE	SYM	DESCRIPTION	DATE	E.M.N. NO.	DRAFT	CHKD	APPD
E1, C3	A	ADDED: USED ON COLUMN TO CHART. (*) NOTE FORMERLY-	4-16-63	8758			
A4		ADDED RAC-24, BAC-1 TO MODEL USED ON					
D2		ON CHART, AX-382-11 ITEM#2 WAS TR-118					
H	B	ITEM 7 WAS A848, ITEM 8 WAS A849, ON TMC P/N CHART ITEM 788 ADDED, AX 382-13 14815 ADDED, ITEM 7, 8, 9, 10, 11 ADDED TO PICTORIAL, NOTE ADDED TO ITEMS 9 & 10	6/5/64	11494	A.M.	@	MMH
E1	C	CLERICAL CHANGE	1-4-65	-			
E1	D	CLERICAL CHANGE	3-22-65	-			
	E	ADDED AX 382-16	5-17-68	18930			EFM
	F	AT ITEM 1 BUILD UP ADDED NOTE USE MS7201...	1-26-89				
	G	ON CHART ADDED AX 382-17	4-5-89				



TMC PART No.	ITEM #2	USED ON	ITEM #7	ITEM #8
AX-382-1	TR-001	RAC-1, RAC-45	A848	A849
AX-382-2	TR-005	BAC-1		
AX-382-3	TR-012	RAC-11		
AX-382-4	TR-032	RAC-24		
AX-382-5	TR-034	RAC-9		
AX-382-6	TR-036	BAC-1-S-1.5		
AX-382-7	TR-048	RAC-3		
AX-382-8	TR-054	RAC-20		
AX-382-9	TR-090	RAC-7		
AX-382-10	TR-112	RAC-12		
*AX-382-11				
AX-382-12	TR-168	RAC-13	A848	A849
AX-382-13	TR-069	RAC-7A	A1135	A1136
AX-382-14	TR-101	RAC-44	A1135	A1136
AX-382-15	TR-001	RAC-18	A1135	A1136
AX-382-16	TR-033	RAC-48	A1135	A1136
AX-382-17	TR-209	RAC-46	A848	A849

OBSOLETE

* FORMERLY ASSIGNED TO RAC-15; REPLACED BY RAC-7

REPLACED BY RAC-7

NOTE: ITEMS 7 THRU 11 ALWAYS SUPPLIED AS LOOSE ITEMS.

SEE NOTE

USE MS 7201 FOR FIBER GLASS CASE

REQ'D.	ITEM	PART NUMBER	DESCRIPTION	SYMBOL
1	11	FP-132	CONNECTOR, GROUND, ASS'Y	
4	10	SCBP0832BN6	SCREW, MACHINE	
4	9	LWE08MRN	WASHER, LOCK	
1	8	SEE CHART	CONNECTOR, INSULATOR LEFT	
1	7	SEE CHART	CONNECTOR, INSULATOR RIGHT	
4	6	NTH0632BN8	NUT, HEX	
6	5	LWE06MRN	WASHER, LOCK, EXTERNAL	
2	4	SCBP0632BN6	SCREW, MACHINE	
2	3	A-170	SPARK ROD ASS'Y	
1	2	SEE CHART	TRANSFORMER, RF	
1	1	MS-100	PLATE, MOUNTING	

IRV JOHNSON LIST OF MATERIAL			
MATERIAL		THE TECHNICAL MATERIEL CORP. MAMARONECK, NEW YORK	
FINISH		TITLE	
UNLESS OTHERWISE SPECIFIED DIMENSIONS ARE IN INCHES AND INCLUDE CHEMICALLY APPLIED OR PLATED FINISHES		TRANSFORMER & MOUNTING PLATE SUB-ASS'Y	
DECIMALS .X ± .05 .XX ± .01 .XXX ± .005	FRACTIONS ± 1/64 ANGLES ± 0° 30'	DRAWN M.J. TANTILLO	DATE 9-19-62
TOLERANCES		CHECKED [Signature]	DATE 9-20-62
		ELECT. DES. [Signature]	DATE 9-21-62
		MECH. DES. [Signature]	DATE 9-21-62
		SHEET	

QTY./UNIT	MODEL USED ON	ASSY. NO.
1	RAC-7A, 44	A-3090
1	RAC-24, BAC-1	A-3080
1	RAC-1 THRU RAC-20	A-3080
SCALE	CODE	

NOTES

THE CONTENTS OF THIS DRAWING ARE THE EXCLUSIVE PROPERTY OF THE TECHNICAL MATERIEL CORP. ITS UNAUTHORIZED USE OR REPRODUCTION IN WHOLE OR IN PART IS STRICTLY FORBIDDEN.

NOTICE TO PERSONS RECEIVING THIS DRAWING
THE TECHNICAL MATERIEL CORPORATION claims proprietary right in the material disclosed hereon. This drawing is issued in confidence for engineering information only and may not be reproduced or used to manufacture anything shown hereon without permission from THE TECHNICAL MATERIEL CORPORATION to the user. This drawing is loaned for mutual assistance and is subject to recall at any time.

Property of:
THE TECHNICAL MATERIEL CORPORATION
MAMARONECK, NEW YORK