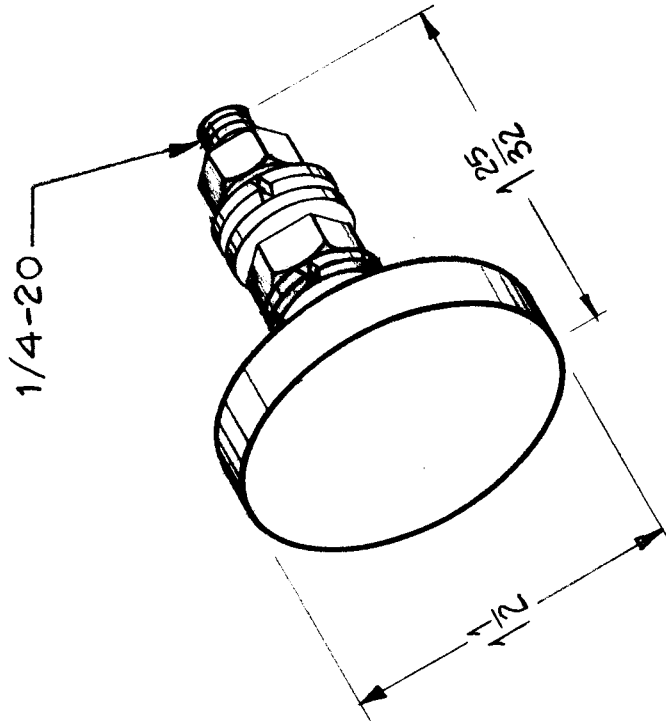


REQ. PER UNIT	USED ON	M DEL	ASSY. NO.	DATE
1	GPT-40K	AT-101	4-11-60	AX-222
				A

- ASSY. CONSISTS OF
- (1) CONTACT, BRASS, RHODIUM PLATE
 - (2) FLAT WASHERS BRASS, NICKEL PLATE
 - (2) SPLIT LOCKWASHER BRONZE, NICKEL PLATE
 - (2) NUT, HEX, BRASS, NICKEL PLATE



REQ. ITEM	PART NO.	DESCRIPTION	SYMBOL
		THE TECHNICAL MATERIEL CORP.	
		MAMARONECK, NEW YORK	
		BUTTON, CONTACT	
		PA INPUT	
		DRNW	0003
		DRAWN	CHECKED
		HEAT TREAT. SPEC.	FINAL APPROVAL
		FINISH & SPEC. NO.	AX-222
			A

ISSUE ITEM

CHANGED FROM

DATE

CH. NO.

DRAFTS

CHECKER

ENG. APP.

SCALE: 1A-186Z

TOLERANCES

DEC. DIM. ±

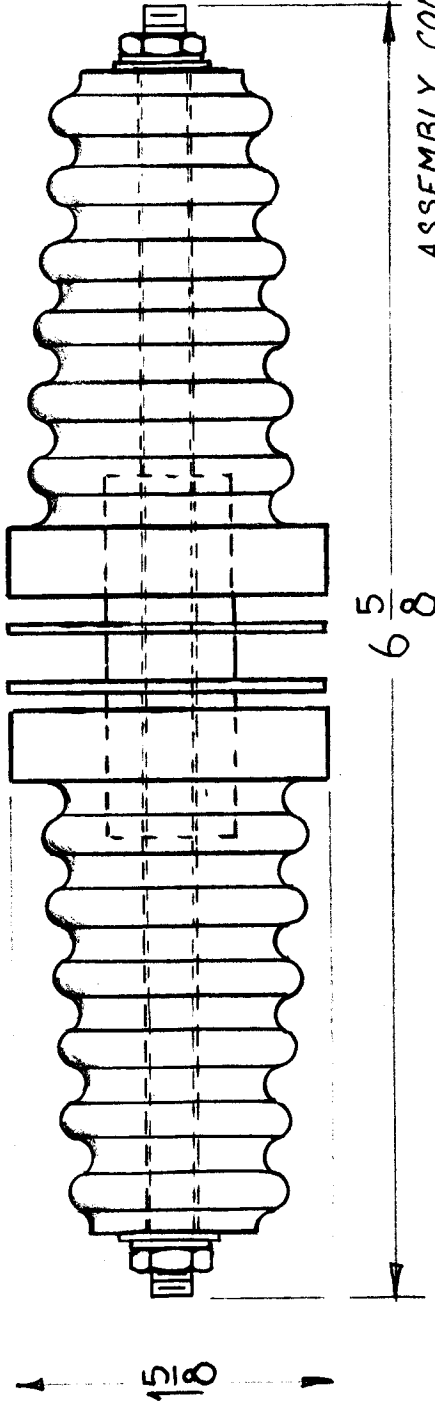
FRAC. DIM. ±

ANGULAR DIM. ±

MAXIMUM ALLOWABLE TOLERANCES HAVE BEEN DETERMINED AND ANY DEVIATIONS WILL BE CAUSE FOR REJECTION. REMOVE ALL BURRS AND SHARP EDGES

AX-228

ISS. PART. UNIT	USED ON	MODEL	ASBY. NO.	DATE
6	GPT-40K	AP-103	AP-103	6-15-60



- ASSEMBLY CONSISTS OF:
- 2 EACH RIBBED STEATITE INSULATORS
 - 2 EACH SILICONE GASKETS
 - 2 EACH NO. 10 FLAT WASHERS
 - 2 EACH NO. 10 FIBER WASHERS
 - 2 EACH NO. 10-32 HEX. NUTS
 - 1 EACH TEFLON GLAND
 - 1 EACH 10-32 THREADED STUD
 - 1 EACH TEFLON STUD INSULATOR MOUNTING-ONE 3/4 D. HOLE

REQ. ITEM	DESCRIPTION	SYMBOL
	THE TECHNICAL MATERIEL CORP. MAMARONECK, NEW YORK	
	INSULATOR, FEEDTHRU	
	PLATE RECTIFIER	
	<i>Dr. [Signature]</i> DRAWN	<i>6-20-60</i> FINAL APPROVAL
	CHECKED	
	TYPE & TEMPER.	
	HEAT TREAT. SPEC.	
	FINISH & SPEC. NO.	AX-228
	ELEC. DES. APP.	
	MECH. DES. APP.	

SCALE: 2A-1912

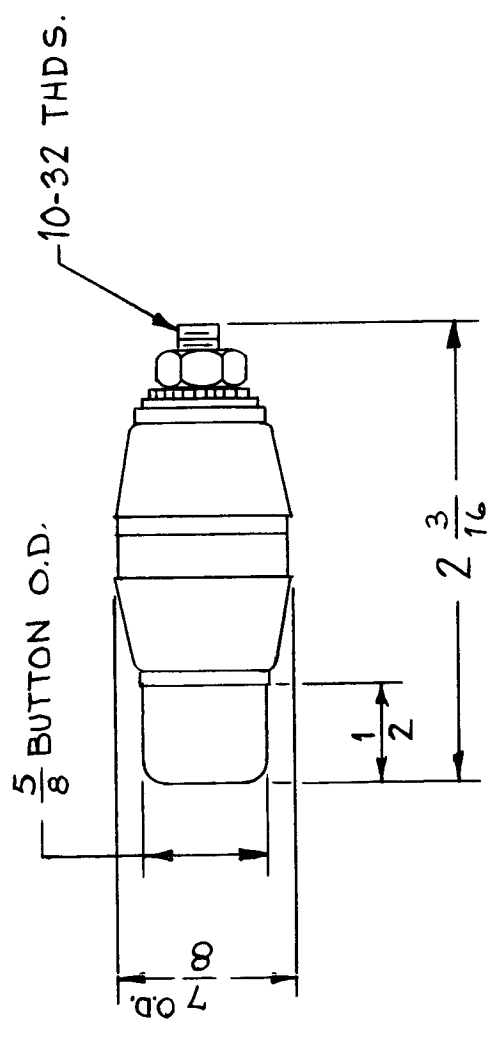
MAXIMUM ALLOWABLE TOLERANCES HAVE BEEN DETERMINED AND ANY DEVIATIONS WILL BE CAUSE FOR REJECTION. REMOVE ALL BURRS AND SHARP EDGES

DEC. DIM. ±
FRAC. DIM. ±
ANGULAR DIM. ±

REQ. PER UNIT	USED ON	
	MODEL	ASSY. NO.
1	RFD-1	12-1-60
1	RFC-1	12-1-60

AX-241

- CONSISTS OF:
- 1 BUTTON - BRASS, NICKEL PLATED
W/10-32 THREADED ROD
 - 2 INSULATORS - CERAMIC
 - 1 GLAND - TEFLON
 - 1 WASHER - NEOPRENE
 - 2 WASHER - FIBER
 - 1 WASHER - FLAT, BRASS,
NICKEL PLATED
 - 1 WASHER - EXT. LOCK, BRASS,
NICKEL PLATED
 - 1 NUT - HEX, BRASS, NICKEL
PLATED



REQ. ITEM	PART NO.	DESCRIPTION	SYMBOL
		THE TECHNICAL MATERIEL CORP. MAMARONECK. NEW YORK	
		CONTACT ELECTRICAL	
		MATERIAL	
		TYPE & TEMPER	
		HEAT TREAT. SPEC.	
		DRAWN	
		CHECKED	
		FINAL APPROVAL	
		FINISH & SPEC. NO.	
		ELEC. DES. APP.	
		MECH. DES. APP.	
		AX-241	

REQ. PER. UNIT	USED ON		DATE
	MODEL	ASSY. NO.	
1	40K	AT-101	5-2-61
1	40K	AT-102	5-2-61

AX-257 A

- ASS'Y CONSISTS OF:
- (1) CONTACT, SWITCH
 - (2) FW25HBN, Flatwasher
 - (2) LWS25MRN, Lockwasher (SPLIT)
 - (2) NTH2520BNI4, Hex. Nut

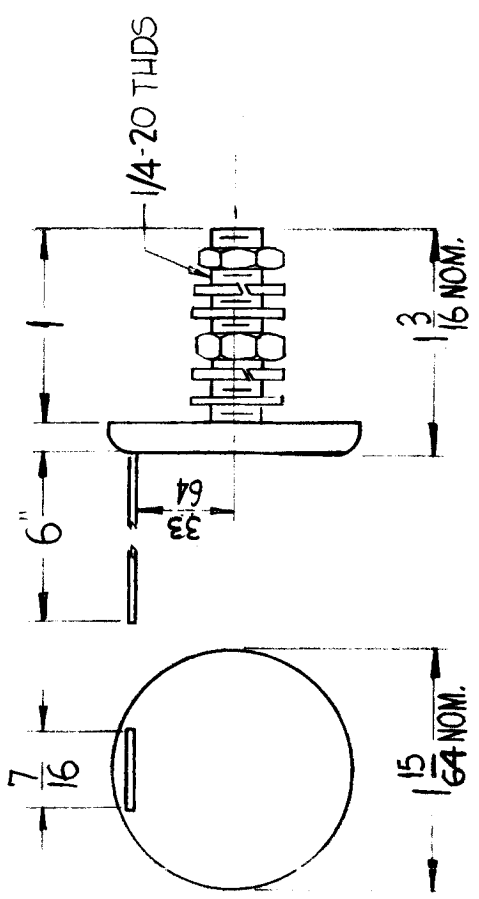
MATERIAL
 CONTACT-Brass, Rhodium Plated
 STRAP-Copper, Rhodium Plated
 HARDWARE-Brass, Nickel Plated

NOTICE TO PERSONS RECEIVING THIS DRAWING

THE TECHNICAL MATERIEL CORPORATION claims proprietary right in the material disclosed hereon. This drawing is issued in confidence for engineering information only and may not be reproduced or used to manufacture anything shown hereon without permission from THE TECHNICAL MATERIEL CORPORATION to the user. This drawing is loaned for mutual assistance and is subject to recall at any time.

Property of:

THE TECHNICAL MATERIEL CORPORATION
 MAMARONECK, NEW YORK



REQ. ITEM	PART NO.	DESCRIPTION	SYMBOL
		THE TECHNICAL MATERIEL CORP. MAMARONECK, NEW YORK	
		CONTACT, ELECTRICAL SWITCH	
ISSUE ITEM	DATE	CH. NO.	CH. NO.
A 1	10-31-61	5789	64 RJL LG
TOLERANCES		SCALE: 1 A-2098	
MAXIMUM ALLOWABLE TOLERANCES HAVE BEEN DETERMINED AND ANY DEVIATIONS WILL BE CAUSE FOR REJECTION. REMOVE ALL BURRS AND SHARP EDGES			
DEC. DIM. ±			
FRAC. DIM. ±			
ANGULAR DIM. ±			
CHANGED FROM	DATE	CH. NO.	CH. NO.
TYPE & TEMPER		HEAT TREAT. SPEC.	
MATERIAL			
STOCK SIZE			
REG. ITEM	PART NO.	DESCRIPTION	SYMBOL
		THE TECHNICAL MATERIEL CORP. MAMARONECK, NEW YORK	
		CONTACT, ELECTRICAL SWITCH	
FINISH & SPEC. NO.			
ELEC. DES. APP.		MECH. DES. APP.	
DRAWN		CHECKED	
DRAWN		CHECKED	
ELEC. DES. APP.		MECH. DES. APP.	
AX-257		FINAL APPROVAL	AX-257 A

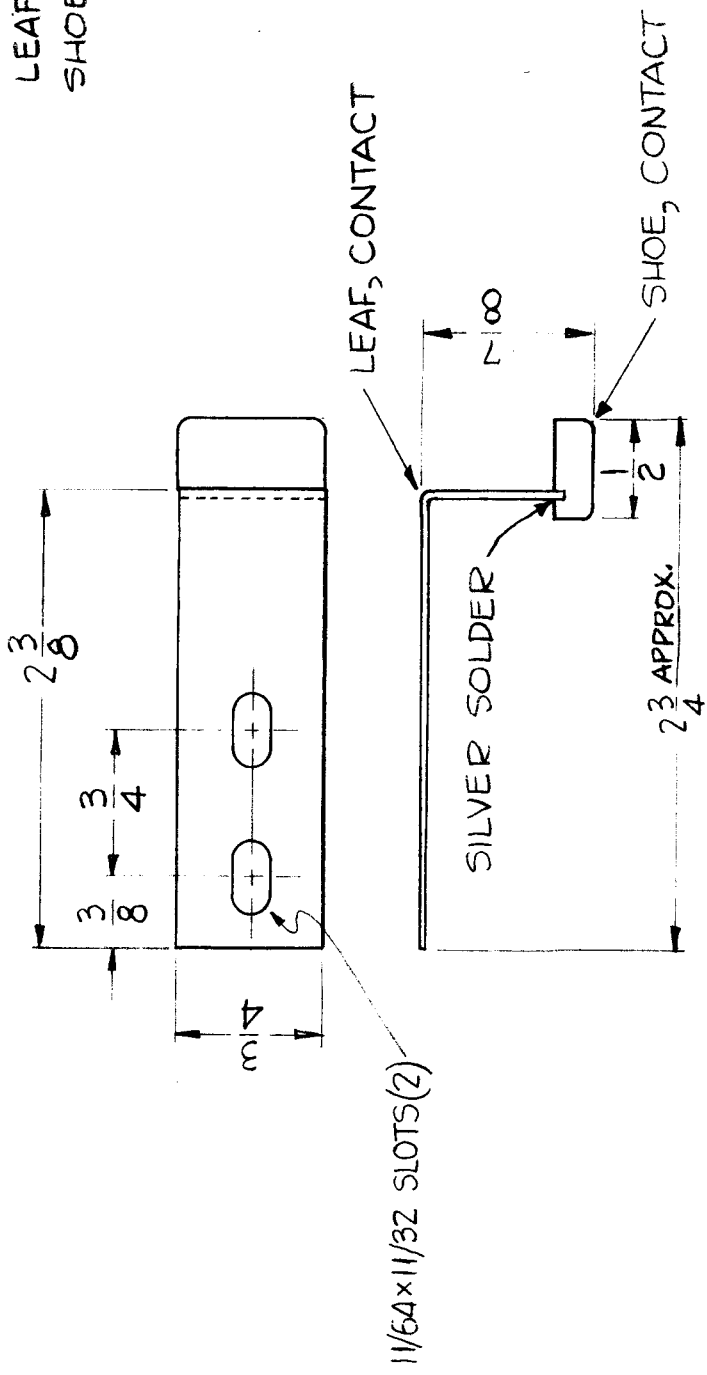
REQ. PER. UNIT	MODEL	USED ON
5	AT-101	ASSY. NO. GPT-40K
		DATE 7-15-61

AX-270

LEAF - BERYLLIUM COPPER
SHOE - BRASS

NOTICE TO PERSONS RECEIVING THIS DRAWING
 THE TECHNICAL MATERIEL CORPORATION claims proprietary right in the material disclosed hereon. This drawing is issued in confidence for engineering information only and may not be reproduced or used to manufacture anything shown hereon without permission from THE TECHNICAL MATERIEL CORPORATION to the user. This drawing is loaned for mutual assistance and is subject to recall at any time.

Property of:
 THE TECHNICAL MATERIEL CORPORATION
 MAMARONECK, NEW YORK



REQ. ITEM	PART NO.	DESCRIPTION	SYMBOL
		THE TECHNICAL MATERIEL CORP.	
		MAMARONECK, NEW YORK	
		ASSEMBLY, SHOE CONTACT	
ISSUE ITEM	CHANGED FROM	DRAWN	CHECKED
		<i>D.D. Young</i>	<i>Jude</i>
			<i>RFM</i>
			FINAL APPROVAL
			AX-270
DATE	CH. NO.	DRAFTS	CHECKER
SCALE:	1A-1819		
TOLERANCES			
DEC. DIM. ±			
FRAC. DIM. ±			
ANGULAR DIM. ±			
MAXIMUM ALLOWABLE TOLERANCES HAVE BEEN DETERMINED AND ANY DEVIATIONS WILL BE CAUSE FOR REJECTION. REMOVE ALL BURRS AND SHARP EDGES			
TYPE & TEMPER	HEAT TREAT. SPEC.	FINISH & SPEC. NO.	ELEC. DES. APP. MECH. DES. APP.

