

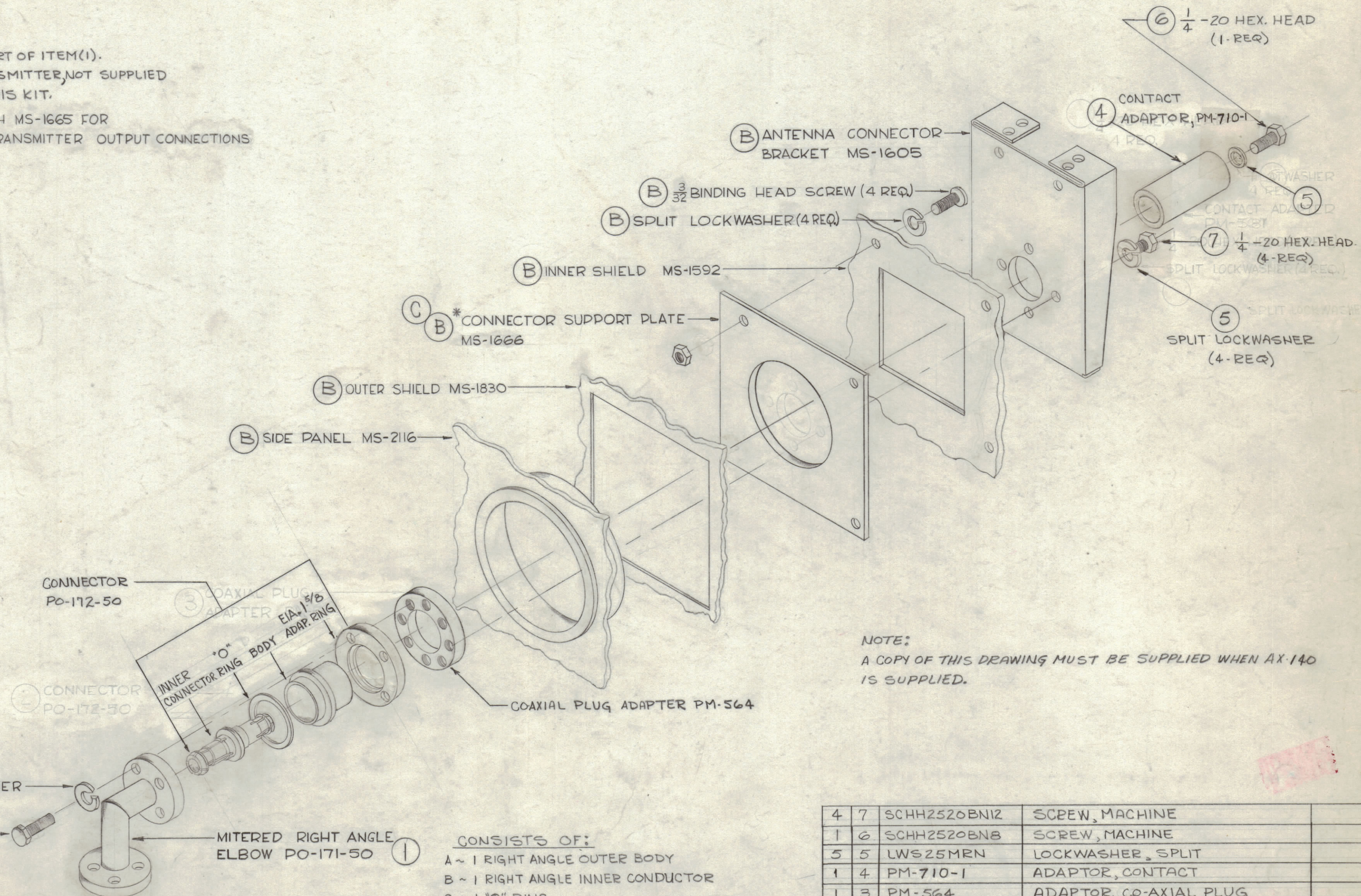
NOTICE TO PERSONS RECEIVING THIS DRAWING

THE TECHNICAL MATERIEL CORPORATION claims proprietary right in the material disclosed hereon. This drawing is issued in confidence for engineering information only and may not be reproduced or used to manufacture anything shown hereon without permission from THE TECHNICAL MATERIEL CORPORATION to the user. This drawing is loaned for mutual assistance and is subject to recall at any time.

Property of:
THE TECHNICAL MATERIEL CORPORATION
MAMARONECK, NEW YORK

NOTES

- A ~ HARDWARE, PART OF ITEM (1).
- B ~ PART OF TRANSMITTER, NOT SUPPLIED AS PART OF THIS KIT.
- C ~ *REPLACE WITH MS-1665 FOR 600 OHM TRANSMITTER OUTPUT CONNECTIONS



CONSISTS OF:
 A ~ 1 RIGHT ANGLE OUTER BODY
 B ~ 1 RIGHT ANGLE INNER CONDUCTOR
 C ~ 1 "0" RING
 D ~ 1 INNER CONNECTOR EIA.
 E ~ 4 5/16" HEX. HEAD SCREWS
 F ~ 4 SPLIT LOCKWASHERS

4	7	SCHH2520BN12	SCREW, MACHINE
1	6	SCHH2520BN8	SCREW, MACHINE
5	5	LWS25MRN	LOCKWASHER, SPLIT
1	4	PM-710-1	ADAPTOR, CONTACT
1	3	PM-564	ADAPTOR, CO-AXIAL PLUG
1	2	PO-172-50	FLANGE, SOFT SOLDER
1	1	PO-171-50	CONNECTOR, ELECTRICAL

C	~	ITEM (4) WAS PM-581	3-6-73	21035	EF	EF	EF
B	BZ	ITEMS (1) THRU (7) ADDED; NOTES ADDED	11-28-62	7735	EF	EF	EF
A	~	Completely Redrawn & Revised From 2 Size	1-13-62	6134	EF	EF	EF
SYM	ZONE	DESCRIPTION	DATE	CH. NO.	DRAFTS	CHECKER	ENG. APP.
UNLESS OTHERWISE SPECIFIED:			SCALE (A-1762)				
DIMENSIONS ARE IN INCHES			MAXIMUM ALLOWABLE TOLERANCES HAVE BEEN DETERMINED AND ANY DEVIATIONS WILL BE CAUSE FOR REJECTION. REMOVE ALL BURRS & SHARP EDGES				
TOLERANCES ON			A				
FRACTIONS ± 1/64			DECIMALS ± .005			ANGLES ± 1/2°	

REQ. PER UNIT	MODEL	SECTION	ASS'Y. NO.	DATE
				1-13-62

REQ.	ITEM	PART NO.	DESCRIPTION	SYMBOL
THE TECHNICAL MATERIEL CORP. MAMARONECK, NEW YORK				
STOCK SIZE				
MATERIAL				
TYPE & TEMPER				
FINISH & SPEC. NO.				
DRAWN			CHECKED	
ELEC. DES. APP.			MECH. DES. APP.	
SHEET			OF	