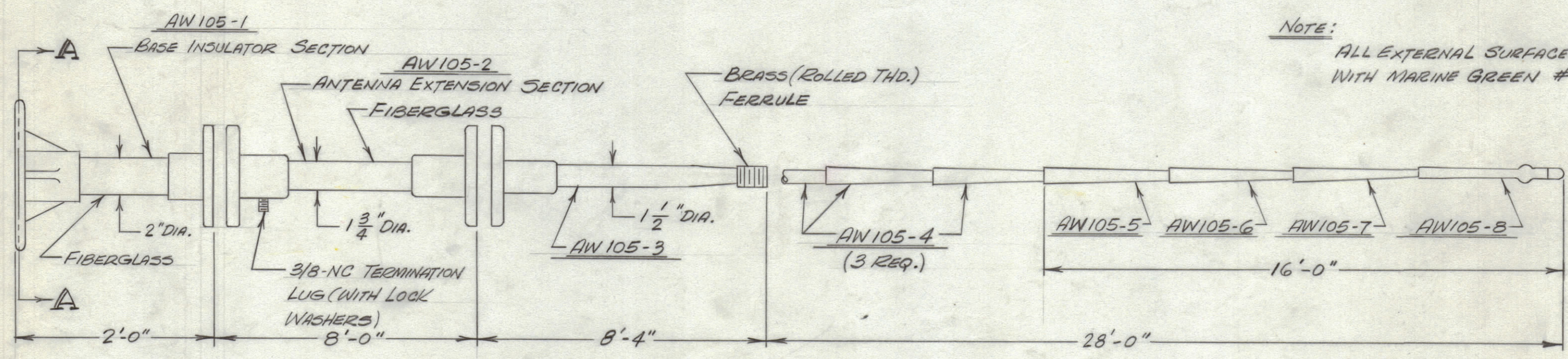


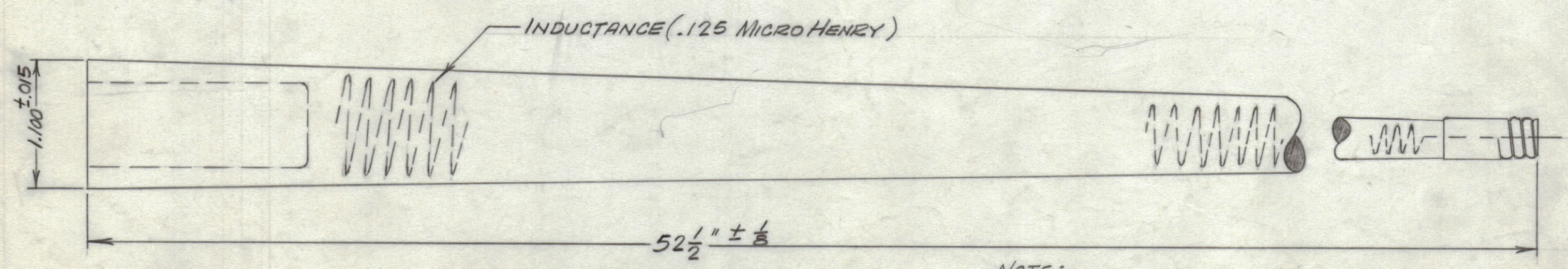
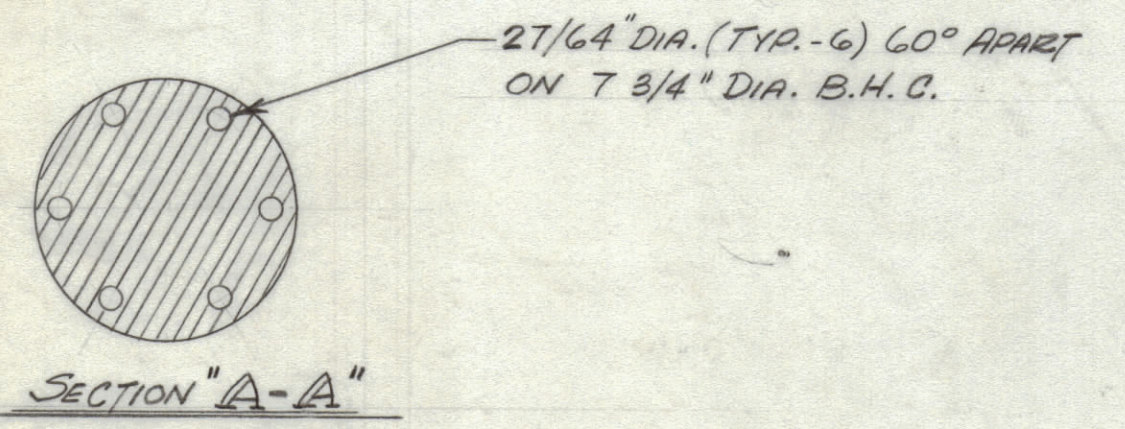
TMC PART No.	MFG. PART No.	DESCRIPTION	FEDERAL STOCK No.	NOMENCLATURE
AW105-1		BASE INSULATOR SECTION		
AW105-2		ANTENNA EXTENSION SECTION		
AW105-3				
AW105-4	75381	EXTENSION SECTION	5985-733-6046	AT-1043/U
AW105-5	75371	ANTENNA ELEMENT	5985-733-6045	AT-1042/U
AW105-6	75431	ANTENNA ELEMENT	5985-733-6044	AT-1041/U
AW105-7	75361	ANTENNA ELEMENT	5985-733-6043	AT-1040/U
AW105-8	75391	ANTENNA ELEMENT	5985-733-6042	AT-1039/U
AW105-9	07346	LOADED SECTION		

REVISIONS						
ZONE	SYM	DESCRIPTION	DATE	E.M.N. NO.	DRAFT	CHKD
Ø		ORIGINAL RELEASE FOR PRODUCTION	4/20/65	-	NLA	
A		COMBINATION CHART - 10,11,12,13 ADDED	4/20/65	15339	A.V.V.	QTB

ASSEMBLY COMBINATION CHART										
TMC PART NUMBER	AW105-1	AW105-2	AW105-3	AW105-4	AW105-5	AW105-6	AW105-7	AW105-8	AW105-9	RADIATING LENGTH
AW105-10	1	-	1	3	1	1	1	1	-	36' 4"
AW105-11	1	1	1	3	1	1	1	1	-	44' 4"
AW105-12	1	-	1	3	-	1	1	1	1	36' 4"
AW105-13	1	1	1	3	-	1	1	1	1	44' 4"



NOTE:  
ALL EXTERNAL SURFACES PAINTED WITH MARINE GREEN # 23.



AW105-9  
LOADED SECTION  
MAY BE SUBSTITUTED FOR FOURTH SECTION FROM TOP (AW105-5) AS REQUIRED.

- NOTE:
- 1.- WRAPPED WITH 12 END EPOXY THD. (MARINE GREEN #23)
  - 2.- #18 NYCLAD WIRE USED.
  - 3.- PAINTED WITH HI-BUILD #23 MARINE GREEN.

REQ'D.	ITEM	PART NUMBER	DESCRIPTION	SYMBOL
LIST OF MATERIAL				
MATERIAL			THE TECHNICAL MATERIEL CORP. MAMARONECK, NEW YORK	
FINISH			TITLE	
SEE NOTES			ANTENNA, WHIP, FIBERGLASS	
UNLESS OTHERWISE SPECIFIED DIMENSIONS ARE IN INCHES AND INCLUDE CHEMICALLY APPLIED OR PLATED FINISHES		DRAWN	DATE	FINAL APPROVAL
		A. Austin	4-13-65	A.V.V.
		QTB	4/20/65	4/20/65
DECIMALS		ELECT. DES.		DATE
.X ± .05		± 1/64		AW105
.XX ± .01		ANGLES		A
.XXX ± .005		MECH. DES.		DATE
		± 0° 30'		SHEET
				REV. LTR.

NOTES

THE CONTENTS OF THIS DRAWING ARE THE EXCLUSIVE PROPERTY OF THE TECHNICAL MATERIEL CORP. ITS UNAUTHORIZED USE OR REPRODUCTION IN WHOLE OR IN PART IS STRICTLY FORBIDDEN.