

5

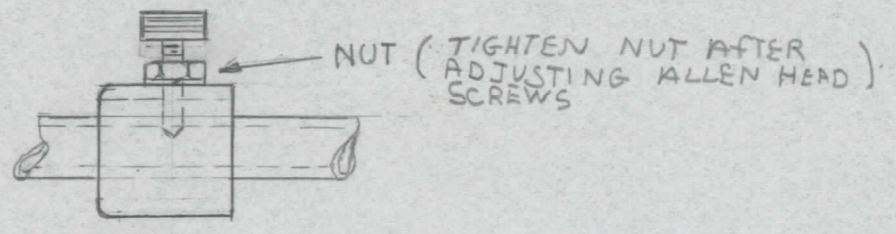
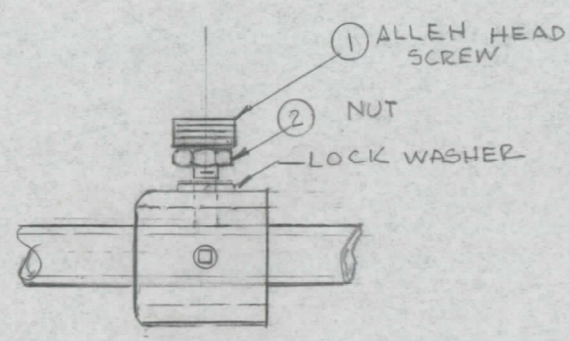
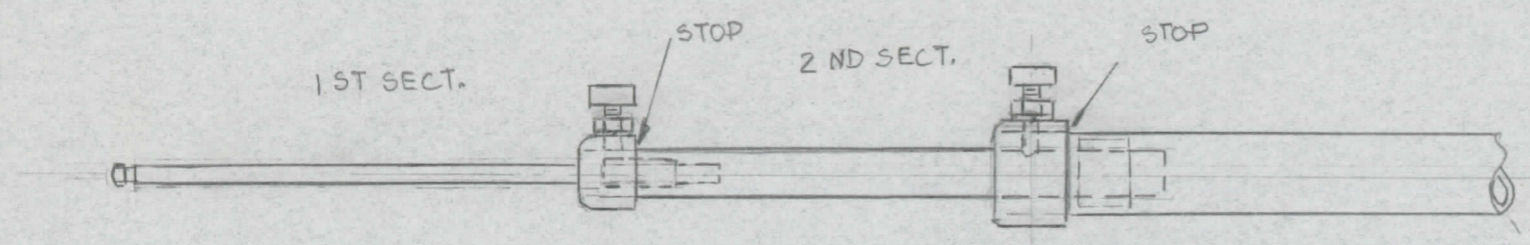
4

3

2

1

REVISIONS							
E.M.N. NO.	DRAFT	CHKD	ZONE	LTR	DESCRIPTION	DATE	APPROVED



PULL OUT ANTENNA UNTIL 1ST AND 2ND SECTION HIT STOP'S, DO NOT FORCE PAST STOP'S -

TO LOCK ANTENNA SECTIONS, LOOSEN ALLEN HEAD SCREW'S, SLIDE SECTIONS TO STOP'S, ADJUST NUT ITEM 2 TO TOP OF ALLEN SCREW'S. WITH ALLEN WRENCH TIGHTEN ALL SCREW'S TO SECURE SECTION FROM SLIDING UP & DOWN, (DO NOT OVER THIGTEN) WITH 3/8 WRENCH TURN NUT (ITEM 2) C.W. AND TIGHTEN TO ACT AS A DOUBLE LOCKING NUT

REQ'D	ITEM	PART NUMBER	DESCRIPTION	SYM.
-------	------	-------------	-------------	------

LIST OF MATERIAL

THE TECHNICAL MATERIEL CORP.
MAMARONECK, NEW YORK

AW 101-1 INFO INSTALLATION

QTY / UNIT	MODEL USED ON	ASS'Y NO.
APPLICATION		
	CODE	

NOTICE TO PERSONS RECEIVING THIS DRAWING
THE TECHNICAL MATERIEL CORPORATION claims proprietary right in the material disclosed hereon. This drawing is issued in confidence for engineering information only and may not be reproduced or used to manufacture anything shown hereon without permission from THE TECHNICAL MATERIEL CORPORATION to the user. This drawing is loaned for mutual assistance and is subject to recall at any time.

UNLESS OTHERWISE SPECIFIED DIMENSIONS ARE IN INCHES AND INCLUDE CHEMICALLY APPLIED OR PLATED FINISHES

DECIMALS	FRACTIONS	TOLS.	ANGLES
.X ± .05	1/64		
.XX ± .01			0° -30'
.XXX ± .005			

MATERIAL

FINISH

FINAL APPROVAL	DATE
MECH. DES.	DATE
ELECT. DES.	DATE
CHECKED	DATE
DRAWN	DATE

SIZE	CODE IDENT. NO.	DWG NO.	ISSUE
B	82679		

SCALE	SHEET	OF

5

4

3

2

1