

REVISIONS						
ZONE	LTR	DESCRIPTION	DATE	E.M.N.NO	DRAFT	CHKD APPD
	X		3-1-67		L.R.K.	<i>[Signature]</i>
	Ø	ORIGINAL RELEASE	3/21/67	Ø		<i>[Signature]</i>
	A	THDD INSERTS WERE STUDS	5-2-67	18152	HEQ	<i>[Signature]</i> RH
	B	ADD 0.22 DIM	1-21-70	19729	KD	<i>[Signature]</i> P.P.H.
	C	ADD IOMA MAX TO OSC. SUPPLY	4-21-70	19815	GE	<i>[Signature]</i> O.P.H.

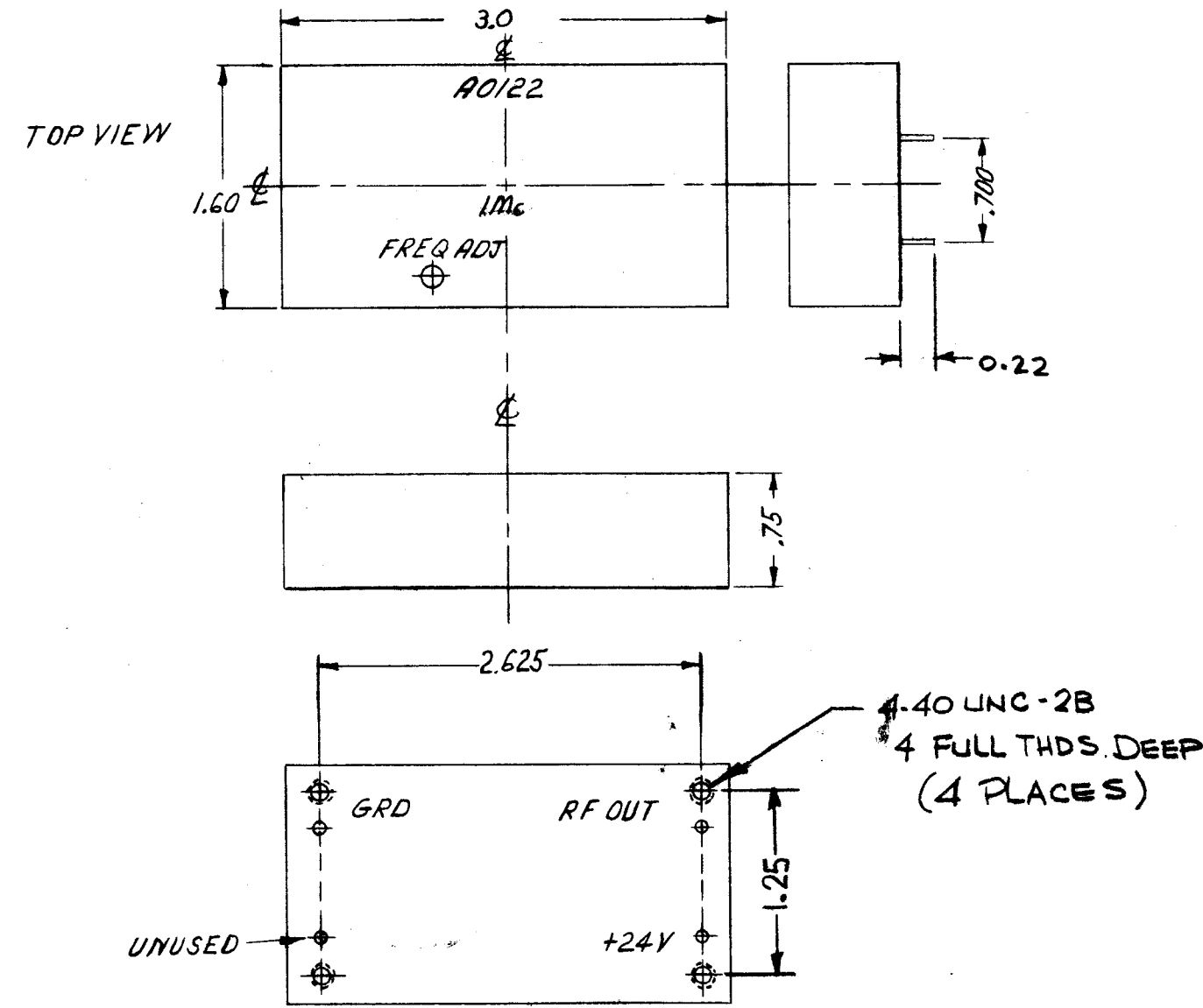
SPECIFICATIONS

FREQUENCY: 1000 kHz
 OSCILLATOR SUPPLY: +24 V DC ±5%, IOMA MAX
 STABILITY: 1 PART IN 10⁶ OVER AMBIENT RANGE OF 0° TO 50°C
 OUTPUT: 200 MILLIVOLTS TO 200 OHM LOAD
 WAVE SHAPE: SINE
 NON-OPERATING TEMP RANGE: -62°C TO +75°C
 PEAK SHOCK CAPABILITY: 20 G WITHIN A PERIOD OF 10 MILLI-SECONDS APPLIED ALONG THREE MUTUALLY PERPENDICULAR AXES
 VIBRATION CAPABILITY: 5 CPS TO 50 CPS AT AN AMPLITUDE OF 1.3 G

MECHANICAL

CASE:
 MATERIAL: 24 GA COLD ROLLED STEEL
 DIMENSIONS: AS SHOWN
 FINISH: POWDER BLASTED NICKEL
 MARKING: AS INDICATED
 TERMINALS: 4 PL STEEL WIRE .030 DIA OR EQUIVALENT GLASS OR TEFLON INSULATION

MARKING PROCESS: AS PER TMC SPECIFICATION S727
 LETTERING: 1/8 HIGH BLACK GOTHIC, LOCATED AS SHOWN



HFRR-4		
QTY / UNIT	MODEL USED ON	ASS'Y NO.
APPLICATION		
CODE	S401-308(TCXO)	

NOTICE TO PERSONS RECEIVING THIS DRAWING
 THE TECHNICAL MATERIEL CORPORATION claims proprietary right in the material disclosed hereon. This drawing is issued in confidence for manufacturing information only and may not be reproduced or used to manufacture anything shown hereon without permission from THE TECHNICAL MATERIEL CORPORATION to the user. This drawing is loaned for mutual assistance and is subject to recall at any time.

UNLESS OTHERWISE SPECIFIED DIMENSIONS ARE IN INCHES AND INCLUDE CHEMICALLY APPLIED OR PLATED FINISHES	
DECIMALS	FRACTIONS
.X ± .05	1/64
.XX ± .01	TOLS. ANGLES
.XXX ± .005	0° -30'
MATERIAL	
FINISH	

REQ'D	ITEM	PART NUMBER	DESCRIPTION	SYM.
LIST OF MATERIAL				
THE TECHNICAL MATERIEL CORP. MAMARONECK, NEW YORK				
TEMPERATURE COMPENSATED OSCILLATOR				
SIZE	CODE IDENT. NO.	DWG NO.	ISSUE	
B	82679	A0122	C	
SCALE			SHEET	OF

FINAL APPROV	DATE
<i>[Signature]</i>	3/21/67
MECH. DES.	DATE
ELECT. DES.	DATE
CHECKED	DATE
<i>[Signature]</i>	3/17/67
DRAWN	DATE
L.KOLIBABEK	3-1-67