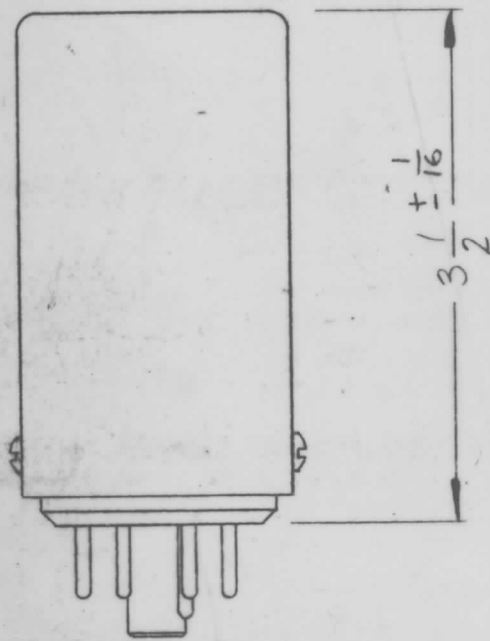
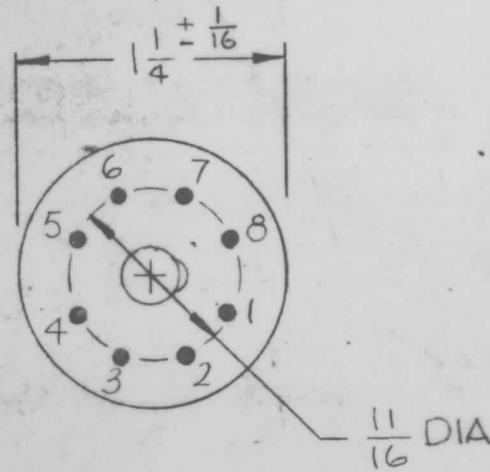
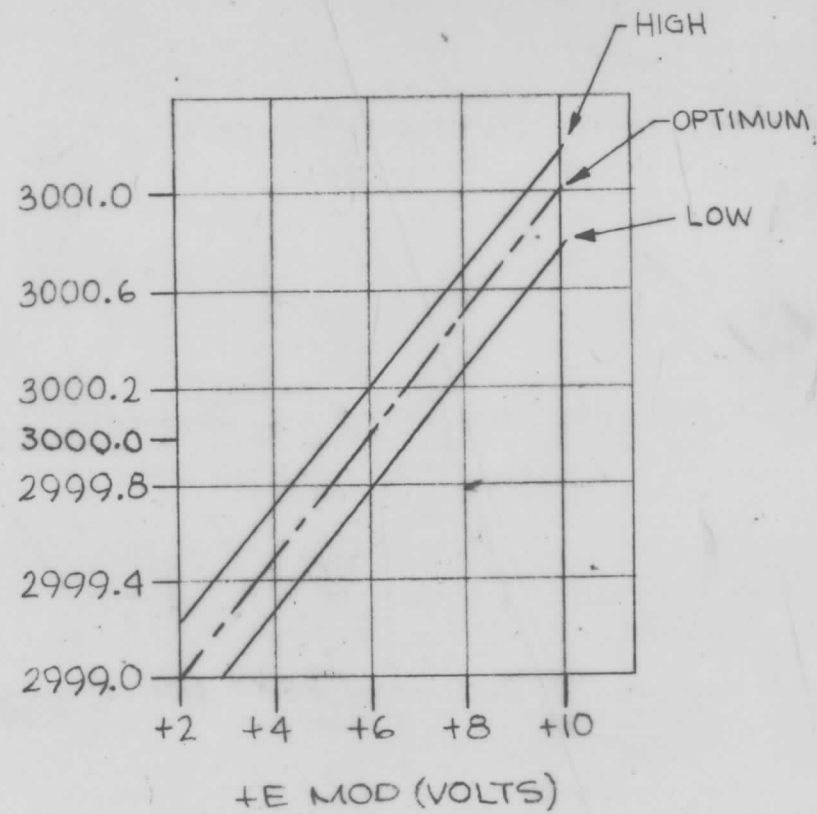


MARK TMC PART/NO.
 $\frac{1}{8}$ HIGH GOTHIC W/LATEST
 REVISION LETTER. LETTERING
 AS SHOWN



OUTPUT FREQUENCY (KHZ)



PIN No.	DESCRIPTION
1	OVEN PILOT
2	+E MOD 2 TO 10V
3	+28 VDC
4	REG +12VDC OSC
5	OUTPUT
6	-12VDC OSC
7	-28 VDC
8	-E MOD 2 TO 10V

1	LFE-1	AX 652
1	MMX ()	AX 652
Q'TY./UNIT	MODEL USED ON	ASS'Y. NO.
SCALE DO NOT SCALE	CODE	
THE CONTENTS OF THIS DRAWING ARE THE EXCLUSIVE PROPERTY OF THE TECHNICAL MATERIEL CORP. ITS UNAUTHORIZED USE OR REPRODUCTION IN WHOLE OR IN PART IS STRICTLY FORBIDDEN.		

AO121 D

REVISIONS						
SYM	DESCRIPTION	DATE	E.M.N. NO.	DRAFT	CHKD	APPD
X	EXPERIMENTAL RELEASE	12.6.66	X	RME		
Ø	ORIGINAL RELEASE FOR PRODUCTION	12.16.66	Ø	RME		
A	ON ELEC. SPECS. OUTPUT WAS .25VRMS INTO 250Ω	3-13-67	17965	GDL		
B	1-1/4.D. WAS 1-15/16.D. & TOL. ADDED	9.14.67	18505	H.G.		OP
C	HUM. SPECS ADDED, OVEN POWER SPECS REV.	10.19.67	18556			OP
D	DESCR. CHART 28 VDC WAS 115 VAC OVEN	1/16/68	18727			OP

ELECTRICAL SPECS

CENTER FREQUENCY: 3.0 MHz
 FREQUENCY STABILITY: 6×10^{-7} PER 24 HRS OVER THE TEMPERATURE RANGE OF 0° TO 55°C
 OPERATING TEMPERATURE RANGE: 0° TO 55°C
 OUTPUT: .07 VRMS INTO 250 Ω LOAD
 WAVEFORM: SINE WAVE 20% MAX DISTORTION
 OSCILLATOR POWER: +12VDC REGULATED, @ 5 M.A. MAX
 OVEN POWER: 28VDC ± 10% THERMOSTATICALLY CONTROLLED (SNAP-ACTION TYPE) 10 WATTS PEAK.
 MODULATION: CONTROL SIGNAL - 2 TO 10 VOLTS
 SENSITIVITY - 250 Hz/VOLT OVER 2 KHz (.07%)
 LINEARITY - WITHIN 50 Hz
 FREQUENCY RANGE - DC TO 10 KHz
 INPUT IMPEDANCE - 50 KΩ
 HUM: 60 Hz & 120 Hz HUM MUST BE - 65 dB OR MORE

REQ'D.	ITEM	PART NUMBER	DESCRIPTION	SYMBOL
LIST OF MATERIAL				
MATERIAL		THE TECHNICAL MATERIEL CORP. MAMARONECK, NEW YORK		
FINISH		TITLE OSC, OVENIZED		
UNLESS OTHERWISE SPECIFIED DIMENSIONS ARE IN INCHES AND INCLUDE CHEMICALLY APPLIED OR PLATED FINISHES		DRAWN	DATE	FINAL APPROVAL
DECIMALS .X ± .05 .XX ± .01 .XXX ± .005		CHECKED	DATE	DATE
FRACTIONS ± 1/64 ANGLES ± 0° 30'		ELECT. DES.	DATE	DATE
TOLERANCES		MECH. DES.	DATE	DATE
		SHEET		REV. LTR.

NOTES