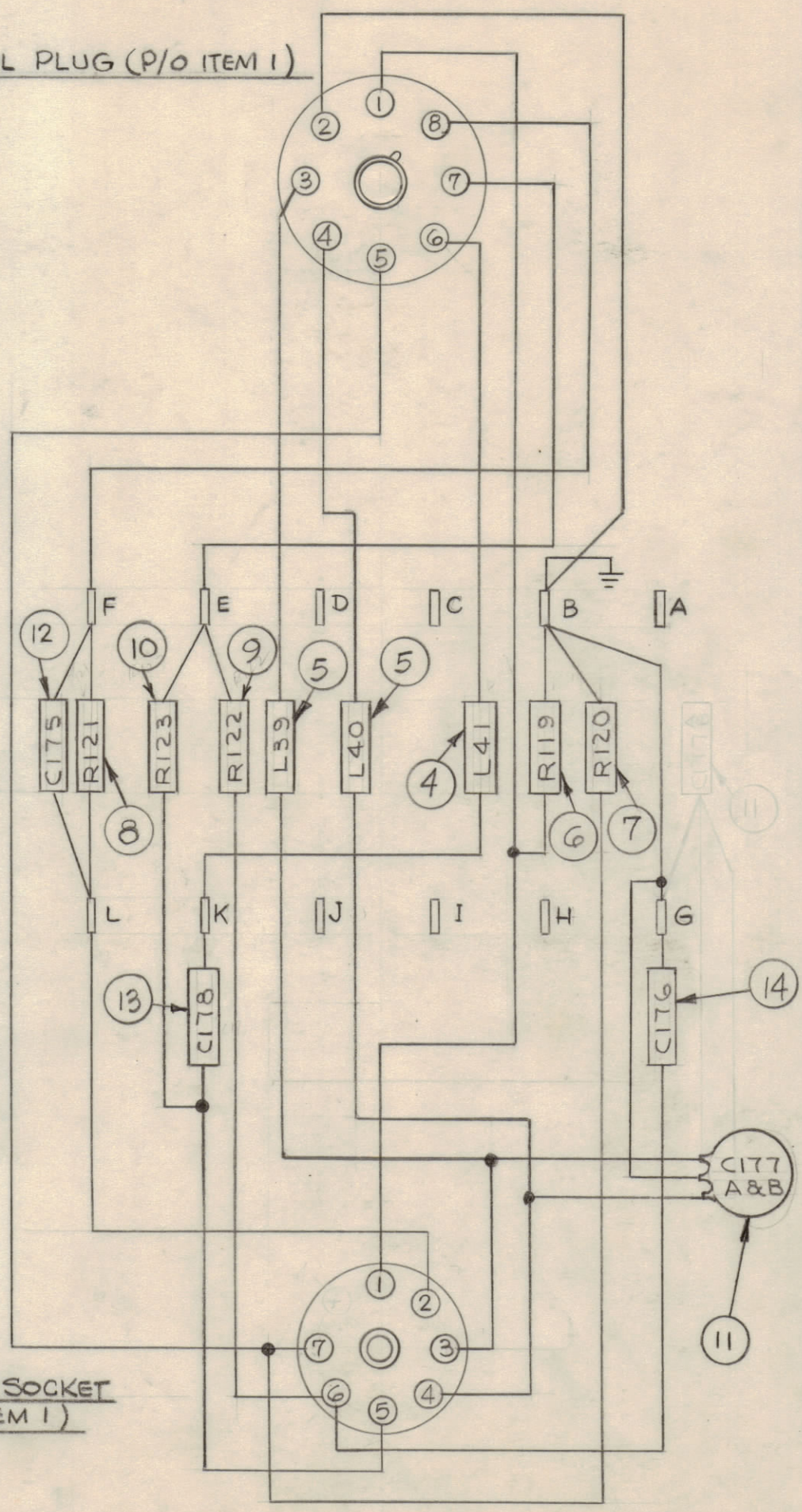


- UNLESS OTHERWISE SPECIFIED -

- 1-MARKING PROCESS: AS PER TMC SPECIFICATION S-727.
- 2-LETTERING: 1/8 HIGH BLACK GOTHIC, LOCATED AS SHOWN.

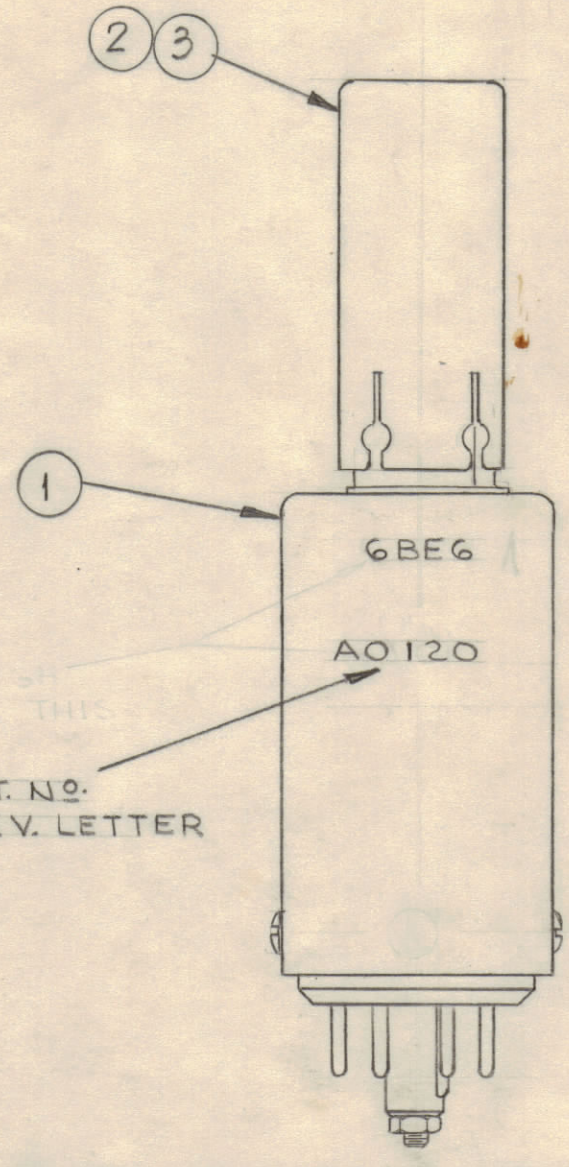
REVISIONS						
SYM	ZONE	DESCRIPTION	DATE	E.M.N.NO	DRAFT	CHKD APPD
X		EXP. RELEASE	11/7/66		H.A.	
Ø		ORIGINAL RELEASE FOR PRODUCTION	11/10/66	Ø	RME	
A		IT. 13 WAS CM112F252G5	11/29/66	17304	RME	
B		C177A, C177B WAS .1µF, ITEM 13 WAS CM112F252G5S	3-23-67	18022	L.A.K.	

OCTAL PLUG (P/O ITEM 1)

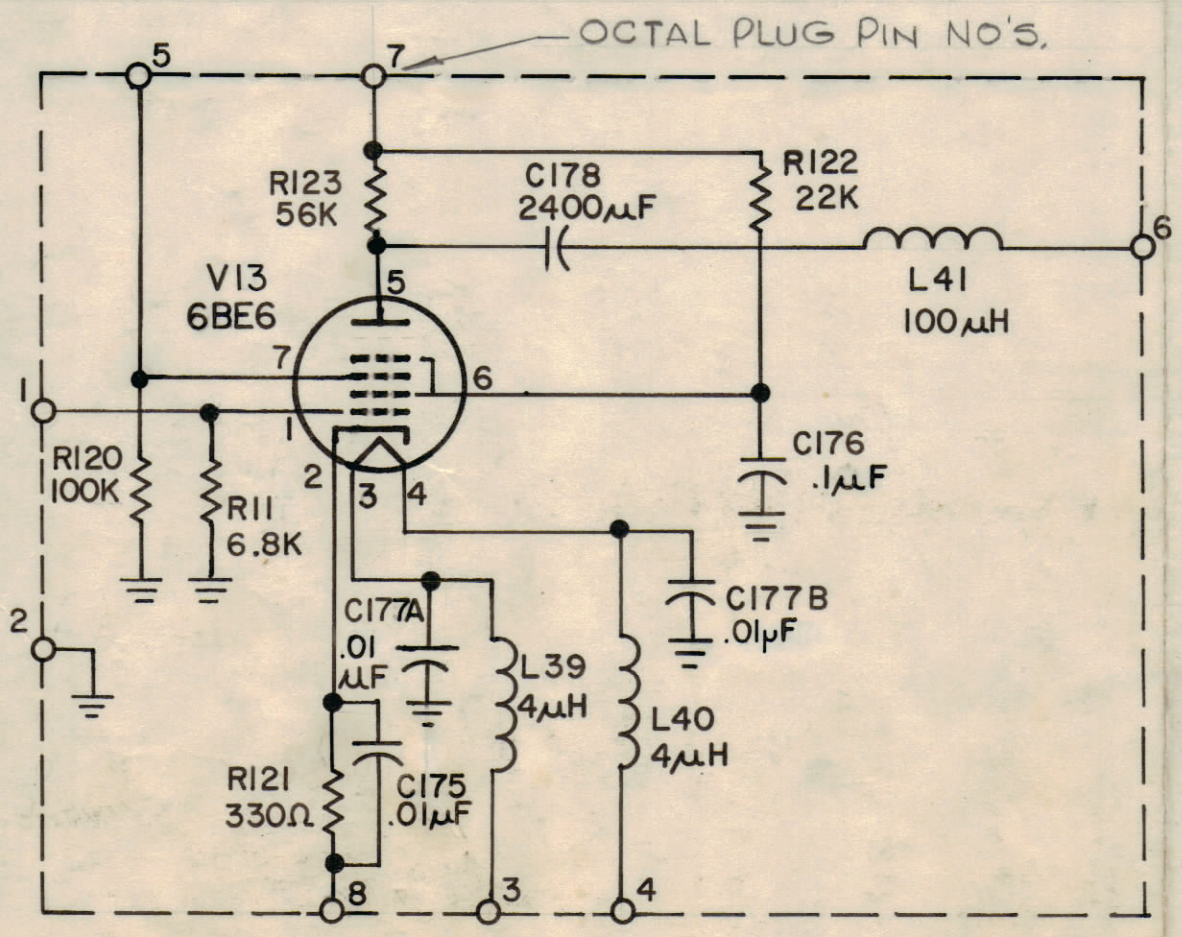


MINIATURE SOCKET (P/O ITEM 1)

- NOTES:
1. WIRE PIN "B" OF TURRET TO GROUND LUG PROVIDED ON CAN.
 2. TURRET IN VIEW ABOVE IS SHOWN FLATTENED FOR CLARITY.
 3. WIRE UNIT AS SHOWN ABOVE. USE SLEEVING WHEREVER THE DANGER OF SHORTING EXISTS. SOLDER ALL CONNECTIONS.
 4. ALL WIRING TO BE ITEM 15 (WL100-7).



MARK TMC PT. NO. W/LATEST REV. LETTER



QTY REQ	ITEM	PART NO.	DESCRIPTION	SYMBOL
	X 17	BS100	SOLDER, TIN ALLOY	
	X 16	PX104-1-022	INSULATION, SLVG	
	X 15	WL100-7	WIRE, BUSS BAR	
1	14	CC100-37	CAPACITOR, FIXED CERAMIC	C176
1	13	CM112F242G5S	CAPACITOR, FIXED MICA	C178
1	12	CC100-16	CAPACITOR, FIXED CERAMIC	C175
1	11	CC100-23	CAPACITOR, FIXED CERAMIC	C177 A&B
1	10	RC20GF563J	RESISTOR, FIXED COMP	R123
1	9	223J		R122
1	8	331J		R121
1	7	104J		R120
1	6	RC20GF682J	RESISTOR, FIXED COMP	R119
2	5	CL105-2	COIL, RF FIXED	L39, L40
1	4	CL275-104	COIL, RF FIXED	L41
1	3	TS102-U01-P35A	SHIELD, TUBE	
1	2	6BE6	ELECTRON TUBE	V13
1	1	PO148-7-2	CASE/SOC, PLUG-IN	

BILL OF MATERIAL				
QTY REQ	ITEM	PART NO.	DESCRIPTION	SYMBOL
THE TECHNICAL MATERIEL CORP. MAMARONECK, NEW YORK				
OSCILLATOR ASSEMBLY BFO (GPR 90 RXDS)				
CODE		SIZE	DWG. NO.	ISSUE
82679		C	AO120	B
SCALE			SHEET OF	

UNLESS OTHERWISE SPECIFIED DIMENSIONS ARE IN INCHES TOLERANCES ON FRACTIONS DECIMALS ANGLES ±1/64 ±.005 ±1/2°

MATERIAL

FINISH

FINAL APPROVAL *[Signature]* DATE 11-8-66
 MECH. DES. *[Signature]* DATE
 ELECT. DES. *[Signature]* DATE 10-27-66
 CHECKED *[Signature]* DATE 10/25/66
 DRAWN *[Signature]* DATE 10-17-66

MAXIMUM ALLOWABLE TOLERANCES HAVE BEEN DETERMINED AND ANY DEVIATIONS WILL BE CAUSE FOR REJECTION.

ML *[Signature]*