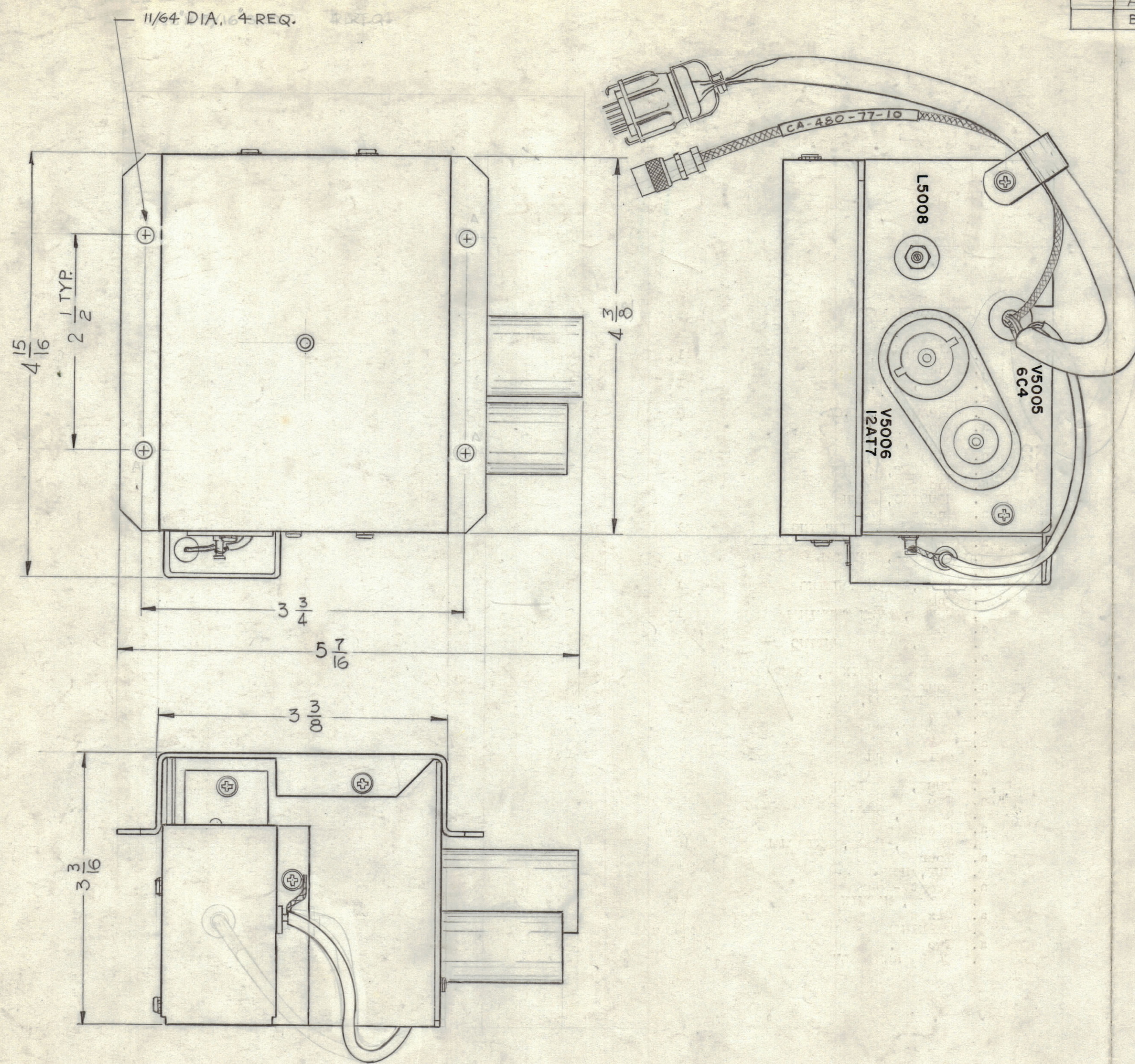


REVISIONS						
ZONE	SYM	DESCRIPTION	DATE	E.M.N. NO.	DRAFT	CHKD
A		REF "A5534 DELE." AFC-3 - A2504	12.7.66	CC	WFW	
B		1/64 DIA WAS 3/16 X 5/16 SLOT; 4-3/8 WAS 4-11/32, LEAD RELOCATED	9-12-67	18476	H.G.	EFM



DESCRIPTION	REQ'D
CAPACITOR, CERAMIC	1
COIL, R.F.	1
CAPACITOR, MICA	5
CLAMP, LOOP	2
GROMMET, RUBBER	3
HOUSING, OVEN	1
COVER, OVEN HOUSING	1
CHASSIS, CRYSTAL	1
BASE, OVEN HOUSING	1
COVER, OVEN TERMINAL	1
BASE, OVEN MOUNTING	1
RESISTOR, FIXED, COMPOSITION	4
INSULATION, OVEN	4
SOCKET, TUBE	2
SHIELD, TUBE	2
TUBE, ELECTRON	2
WASHER, FLAT	2
WASHER, LOCK, EXTERNAL	19
NUT, HEX	4
SCREW, MACHINE	24
TERMINAL	6
CABLE ASSEMBLY	2

AFC-3 - A2504  
REF: AFC-5 - A5534

REQ'D.	ITEM	PART NUMBER	DESCRIPTION	SYMBOL
STRUMER LIST OF MATERIAL				
MATERIAL			THE TECHNICAL MATERIEL CORP. MAMARONECK, NEW YORK	
FINISH			TITLE OVEN ASSEMBLY LOW FREQUENCY	
UNLESS OTHERWISE SPECIFIED DIMENSIONS ARE IN INCHES AND INCLUDE CHEMICALLY APPLIED OR PLATED FINISHES			DRAWN G.D.L.	DATE 28-12-62
			CHECKED H.G.	DATE 1/4/63
			ELECT. DES. H.G.	DATE 1/4/63
			MECH. DES. H.G.	DATE 1-28-63
			FINAL APPROVAL BP	DATE
			AO-109	B
			SHEET	REV. LTR.

**NOTICE TO PERSONS RECEIVING THIS DRAWING**

THE TECHNICAL MATERIEL CORPORATION claims proprietary right in the material disclosed hereon. This drawing is issued in confidence for engineering information only and may not be reproduced or used to manufacture anything shown hereon without permission from THE TECHNICAL MATERIEL CORPORATION to the user. This drawing is loaned for mutual assistance and is subject to recall at any time.

Property of:  
THE TECHNICAL MATERIEL CORPORATION  
MAMARONECK, NEW YORK

Q'TY./UNIT	MODEL USED ON	ASS'Y. NO.
SCALE	CODE	

THE CONTENTS OF THIS DRAWING ARE THE EXCLUSIVE PROPERTY OF THE TECHNICAL MATERIEL CORP. ITS UNAUTHORIZED USE OR REPRODUCTION IN WHOLE OR IN PART IS STRICTLY FORBIDDEN.

NOTES