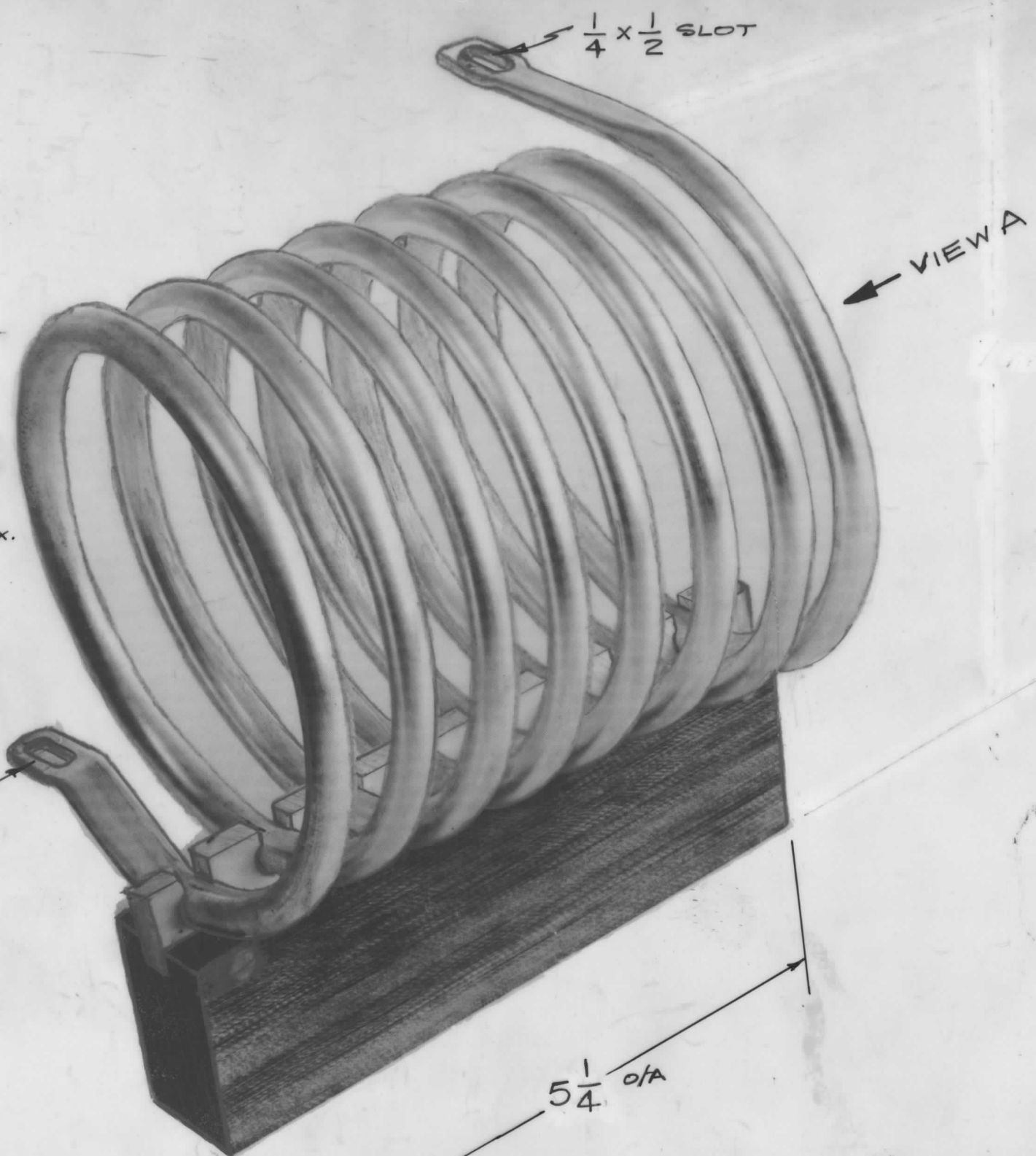
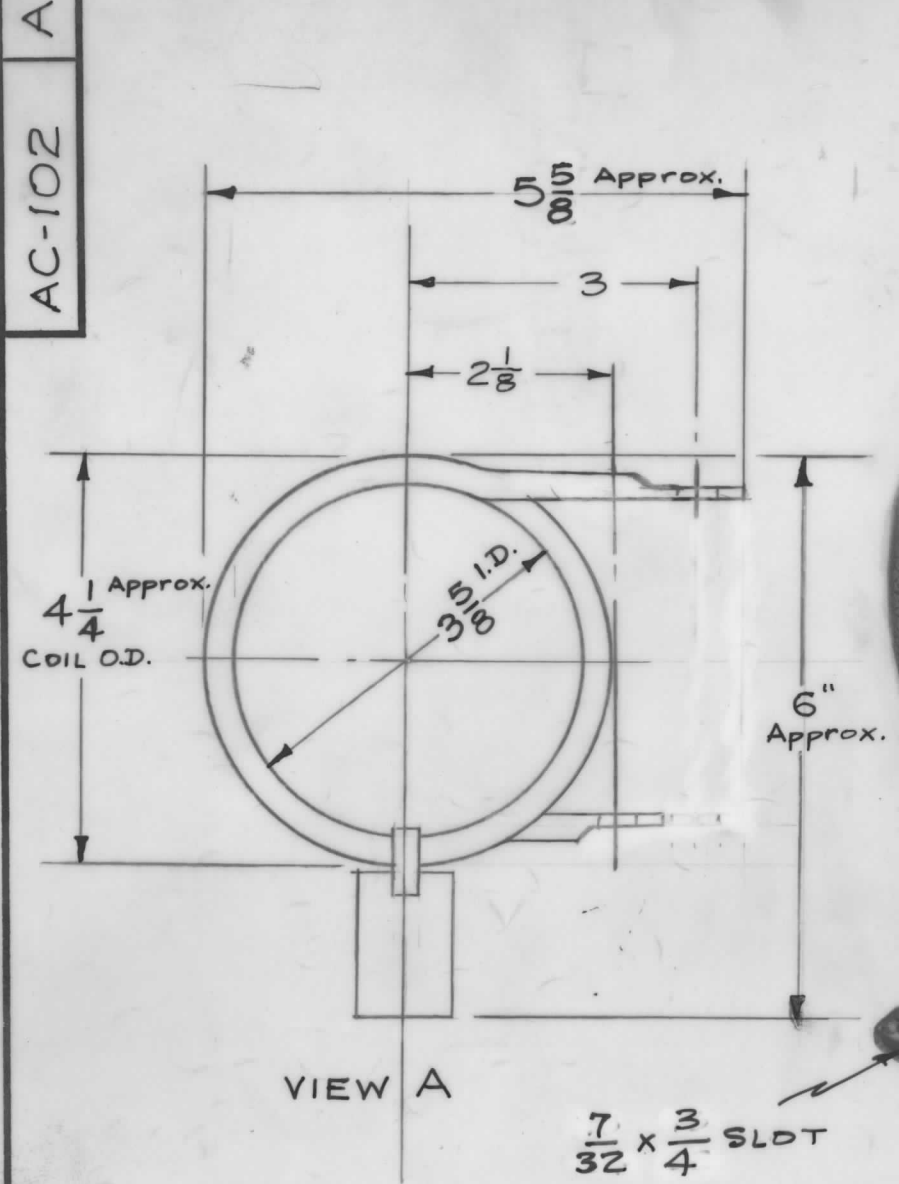


AC-102 A



ELECTRICAL SPECIFICATIONS  
 L - 2.5  $\mu$ H  
 Q - 350  
 TEST FREQ. - 7.9 MC

ASSEMBLY CONSISTS OF 7 1/2 TURNS OF 5/16 in. O.D. SILVER PLATED COPPER TUBING, TEFLON INSULATOR AND MELAMINE MOUNTING BLOCK

ISSUE	ITEM	CHANGED FROM	DATE	CH. NO.	DRAFTS	CHECKER	ENG. APP.
A	1	7 1/2 T. WAS 8 1/2 (Error) 5 1/4 WAS 12 1/2 6 WAS 7"	10/15/59	1421	16	<i>oh</i>	<i>amb</i>
TOLERANCES		SCALE: NPL 2A-1674					
DEC. DIM. $\pm$		MAXIMUM ALLOWABLE TOLERANCES HAVE BEEN DETERMINED AND ANY DEVIATIONS WILL BE CAUSE FOR REJECTION.					
FRAC. DIM. $\pm$							

2	AT-100	GPT-10K	10-15-59
REQ. PER	MODEL	PROJECT NO.	ASS'Y. NO.
			DATE

REQ. ITEM	PART NO.	DESCRIPTION	SYMBOL
		THE TECHNICAL MATERIEL CORP. MAMARONECK, NEW YORK	
	STOCK SIZE	COIL, RF, FIXED, ANTENNA TUNER (L912,913)	
	MATERIAL		
		16 10/15/59	<i>amb</i>
	TYPE & TEMPER	HEAT TREAT. SPEC.	DRAWN CHECKED FINAL APPROVAL
			9/ AC-102 A