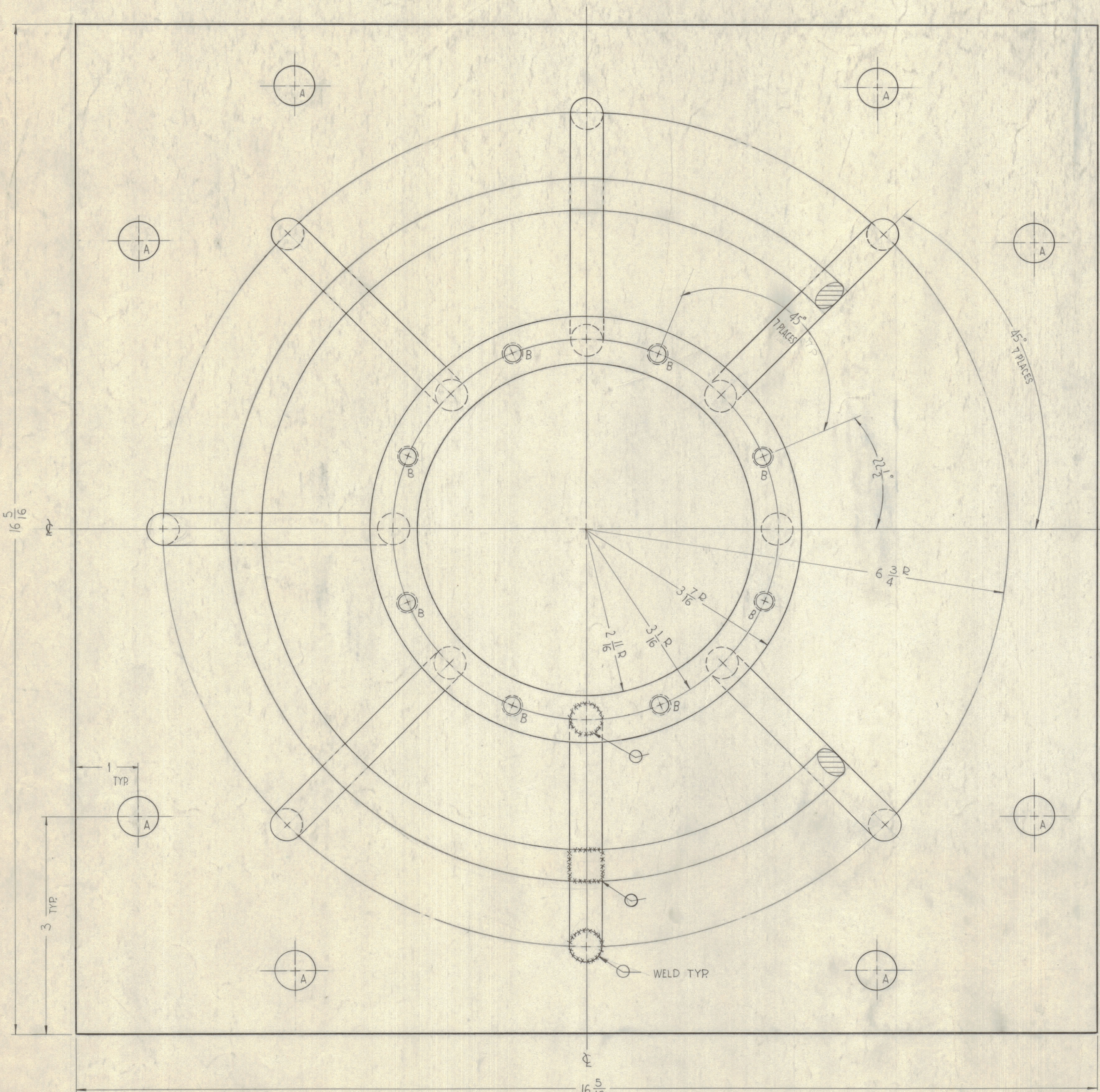
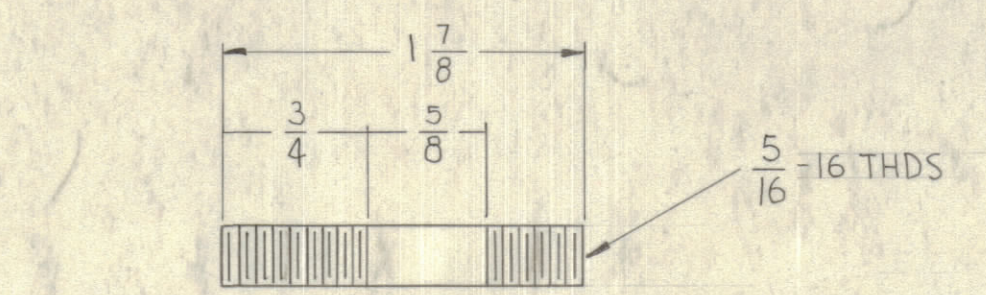


HOLE	DESCRIPTION	REQ.
A	5/8	8
B	5/16-16 THDS	8

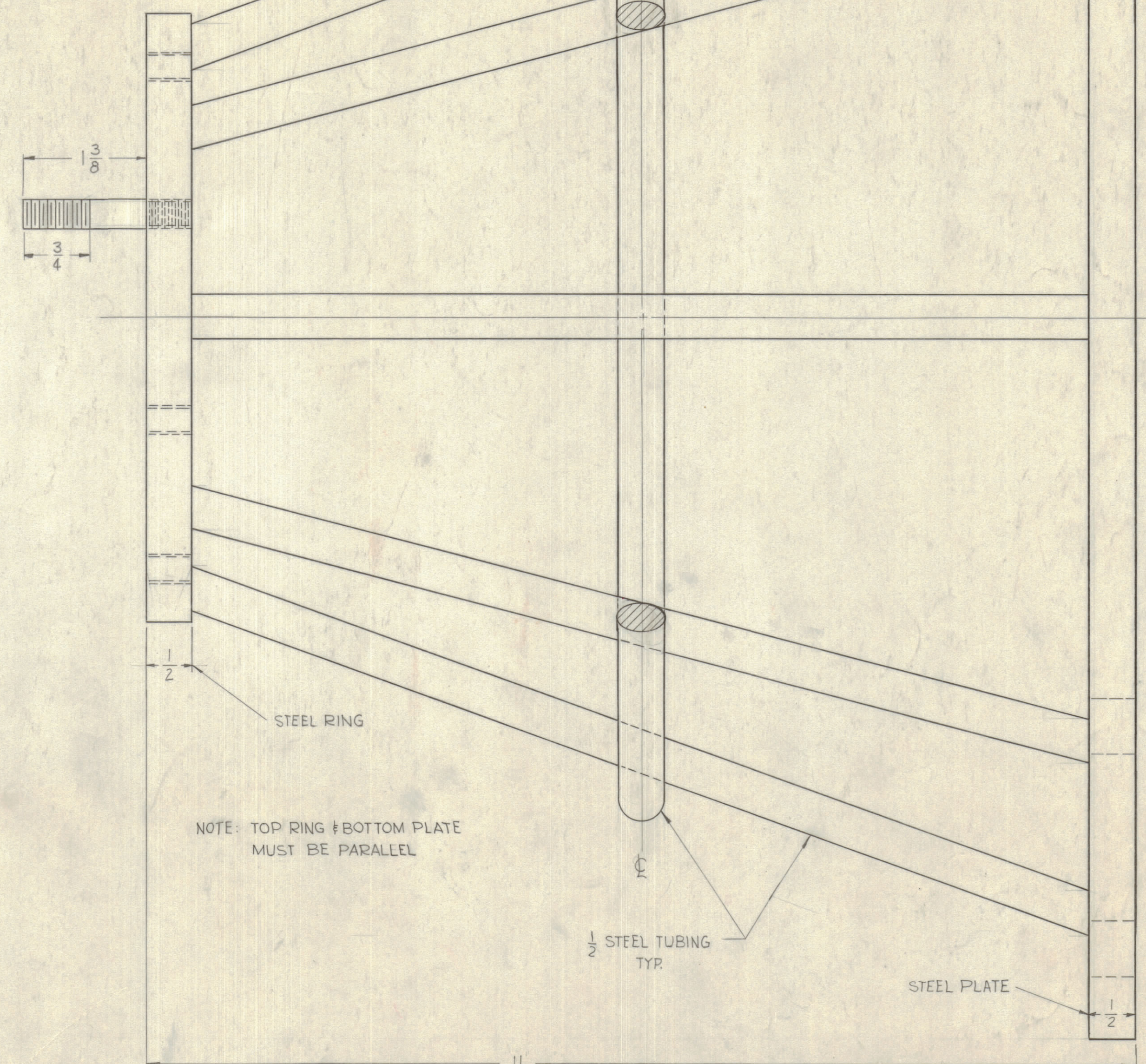
REVISIONS							
ZONE	SYM	DESCRIPTION	DATE	E.M.N. NO.	DRAFT	CHKD	APPD
	Ø	ORIGINAL RELEASE FOR PRODUCTION	9/23/69	Ø	CU		



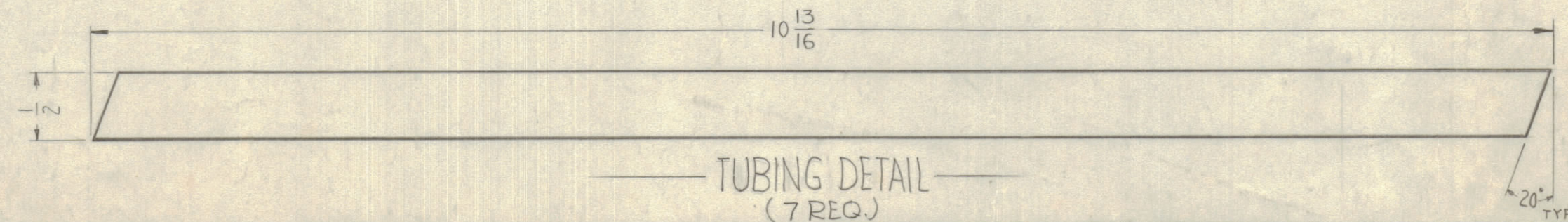
FRONT



STUD-DETAIL  
(8 REQ)  
SUPPLY: 8 SILICONE BRONZE NUTS  
8 SILICONE BRONZE LOCKWASHERS



NOTE: TOP RING & BOTTOM PLATE  
MUST BE PARALLEL



NOTES

QTY./UNIT	DCC-1	A-251B
SCALE	MODEL USED ON	ASBY. NO.

THE CONTENTS OF THIS DRAWING ARE THE EXCLUSIVE PROPERTY OF THE TECHNICAL MATERIEL CORP. ITS UNAUTHORIZED USE OR REPRODUCTION IN WHOLE OR IN PART IS STRICTLY FORBIDDEN.

REQ'D.	ITEM	PART NUMBER	DESCRIPTION	SYMBOL
			<b>R-LANGER</b>	
LIST OF MATERIAL				
MATERIAL	STEEL	THE TECHNICAL MATERIEL CORP. MAMARONECK, NEW YORK		
FINISH	COPPER PLATE & IRIDITE	TITLE BASE, DISCONE, ANTENNA		
UNLESS OTHERWISE SPECIFIED DIMENSIONS ARE IN INCHES AND INCLUDE CHEMICALLY APPLIED OR PLATED FINISHES	DRAWN 0.1000, 11000	DATE 6-11-68	FINAL APPROVAL [Signature]	DATE 9/23/69
DECIMALS .X ± .05 .XX ± .01 .XXX ± .005	CHECKED [Signature]	DATE 6-12-68	ELECT. DES. DATE	MECH. DES. DATE
FRACTIONS ± 1/64 ANGLES ± 0° 30'	TOLERANCES		AB-103	Ø
SHEET				REV. LTR.

AB-103

Ø

A