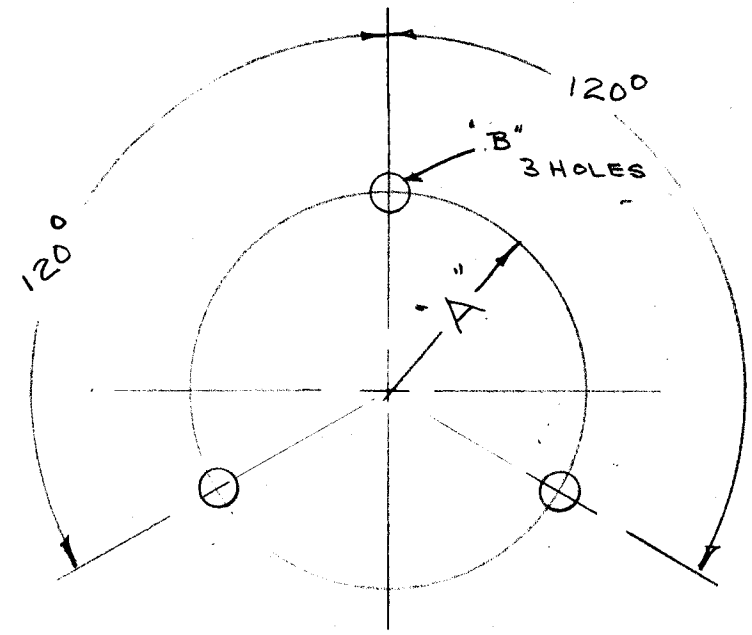


AB-100

TMC NO.	MFG. NO. for Galvanized Iron	MFG. NO. for Chrome Plate Brass	POST O.D. (Inches)	WEIGHT (Lbs.)	RADIUS "A"	HOLE DIA. "B"
AB-100-1	1PG-24	1PB-24	3/4	8		
AB-100-2	1PG-25	1PB-25	25/32			
AB-100-3	1PG-26	1PB-26	13/16			
AB-100-4	1PG-28	1PB-28	7/8		2 5/8	7/16
AB-100-5	1PG-30	1PB-30	15/16			
AB-100-6	1PG-34	1PB-34	1 - 1/16			
AB-100-7	1PG-35	1PB-35	1 - 3/32		2 5/8	7/16
AB-100-8	1PG-41	1PB-41	1 - 9/32			
AB-100-9	1PG-43	1PB-43	1 - 11/32		2 5/8	7/16
AB-100-10	1PG-44	1PB-44	1 - 3/8	8		



DRILLING PLAN

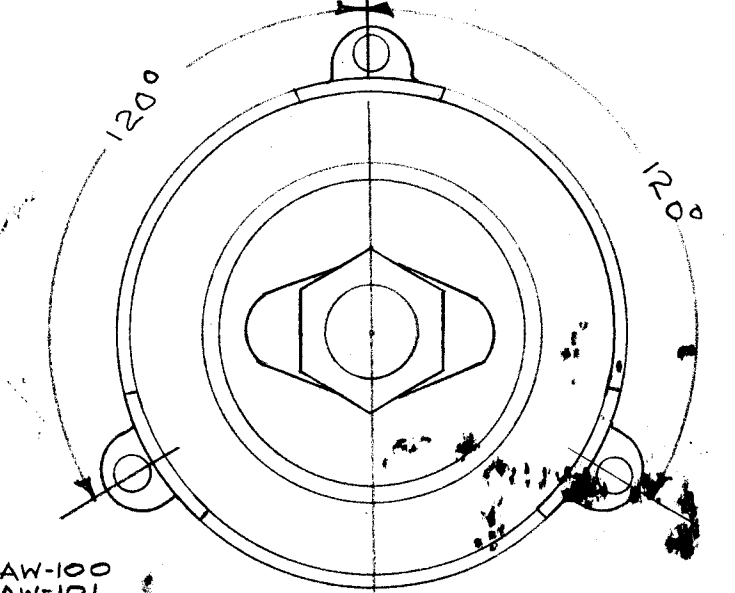
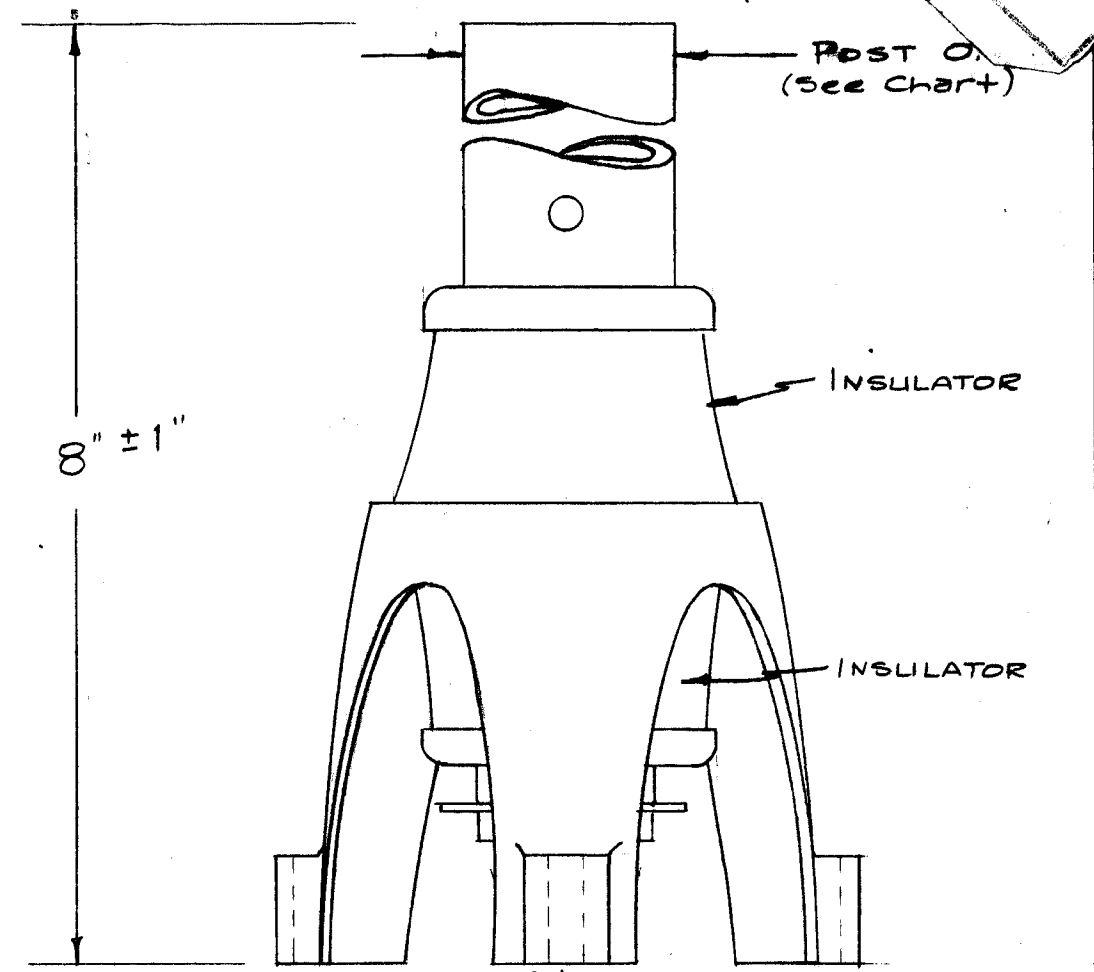
Type Nomenclature to be as follows :

AB-100-1-B

TMC TYPE REQ. (see Chart)

MATERIAL & FINISH
 "B" = Chrome Plated Brass
 "G" = Galvanized Iron

NOTE :
 MFGTR WILL SUPPLY MTG. BOLTS FOR MTG. ANTENNA TO BASE



Ant. Dwg- AW-100
 AW-101
 REF- PREMAX

ISSUE	ITEM	CHANGED FROM	DATE	CH. NO.	DRAFTS	CHECKER	ENG. APP.
TOLERANCES			SCALE:				
DEC. DIM. ±			MAXIMUM ALLOWABLE TOLERANCES HAVE BEEN DETERMINED AND ANY DEVIATIONS WILL BE CAUSE FOR REJECTION. REMOVE ALL BURRS AND SHARP EDGES				
FRAC. DIM. ±							
ANGULAR DIM. ±							

REQ. PER UNIT	MODEL	PROJECT NO.	ASS'Y. NO.	DATE	USED ON

REQ. ITEM	PART NO.	DESCRIPTION	SYMBOL
THE TECHNICAL MATERIEL CORP. MAMARONECK, NEW YORK			
BASE, ANTENNA (RIGID)			
MATERIAL		16 3/16	SA
TYPE & TEMPER	HEAT TREAT. SPEC.	DRAWN	CHECKED
FINISH & SPEC. NO.		ELEC. DES. APP.	MECH. DES. APP.
			AB-100