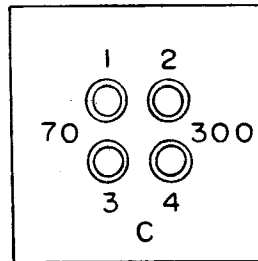


IF IT IS FOUND DESIRABLE TO CHANGE ANY TOLERANCE OR OTHER DETAIL SPECIFIED ON THIS DRAWING NOTIFY THE PURCHASER PROMPTLY.

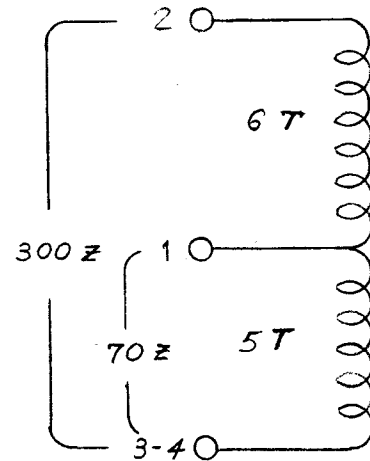
MAXIMUM ALLOWABLE TOLERANCES HAVE BEEN DETERMINED AND DEVIATIONS WILL BE CAUSE FOR REJECTION. REMOVE ALL BURRS AND SHARP EDGES

A-999 D

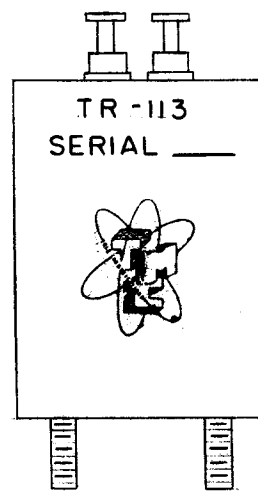
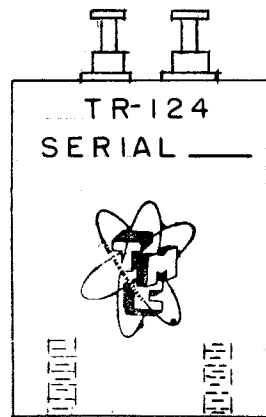
- NOTE:
- DO NOT PAINT STUDS
  - FINISH: S-114 - ZINC CHROMATE PRIMER  
S-115 - SMOOTH GRAY ENAMEL
  - STAMP 70, 300, C, TR-XXX SERIAL\*  
TMC INSIGNIA AS SHOWN.



TERMINALS 3 & 4 CONNECTED INTERNALLY.

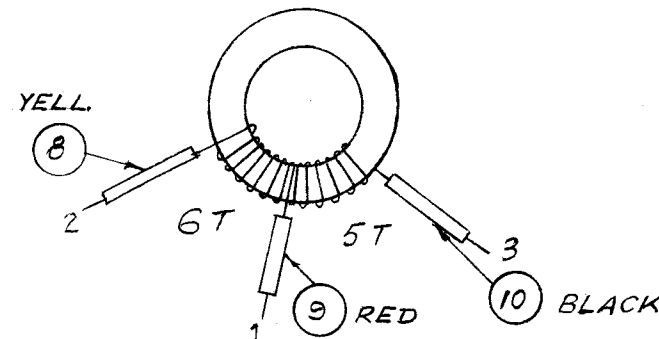


FREQ. RANGE 2-30 Mc.  $\pm$  3 db.  
70  $\Omega$  TO 300  $\Omega$  UNBALANCED



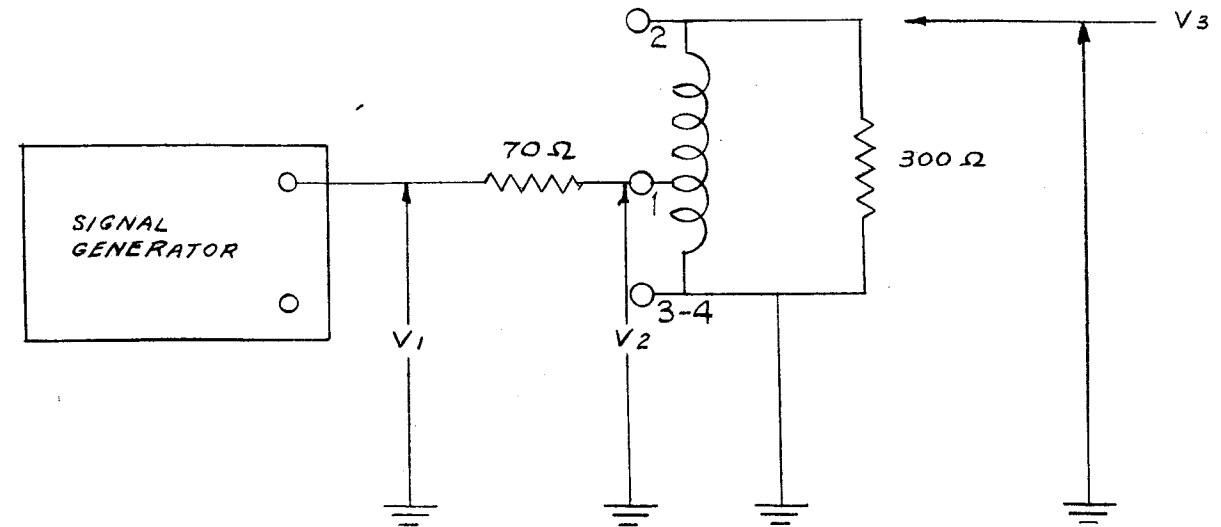
TR-124  
USE ITEM 7  
\*\* BX-140

TR-113  
USE ITEM 1  
\* BX-138



BOTH WINDINGS IN SAME DIRECTION.

ELECTRICAL TEST DATA



f. m. c.	R.F. VOLTS *		
	V <sub>1</sub>	V <sub>2</sub>	V <sub>3</sub>
2	1.05	.47	.98
8	1.05	.52	1.00
32	1.05	.57	.96

VOLTAGES MEASURED WITH H.P. VTVM

REQ.	ITEM	PART NO.	DESCRIPTION	SYMBOL
X	10	PX-104-1-.053	INSULATION SLEEVING (BLACK)	
X	9	PX-104-3-.053	(RED)	
X	8	PX-104-2-.053	INSULATION, SLEEVING (YELL)	
**	7	BX-140	CASE, TRANSFORMER	TR-124
1	6	CN-100-3	CAPACITOR, FIXED	
X	5	GL-100	POTTING COMPOUND	
X	4	BS-100	SOLDER, SOFT	
X	3	WI-102-9	WIRE	
1	2	CI-104	CORE	
*	1	BX-138	CASE, TRANSFORMER	TR-113

NOT TO BE RELEASED  
W/O AUTHORIZATION

AUTH. BY.....  
DATE:.....

ISSUE	ITEM	CHANGED FROM	DATE	CN. NO.	DRAFTS	CHECKER	ENG. APP.
D	1	TERM. 1&2 REVERSED	10/2/59	1363	DM	WJ	WJ
C	1	ERROR CORRECTED TO TR-124	9-27-59	3	B	COB	WJ
B	1	WINDING DATA CHANGED	9-6-59	2	AB	WJ	WJ
A	2	TR-124 ADDED	8/9/59	1	COB	WJ	WJ
A	1	ITEM 7 ADDED					

TOLERANCES		SCALE:
ALL OTHERS	DEC. DIM. $\pm$ FRAC. DIM. $\pm$ ANGULAR DIM. $\pm$	DRILL, PUNCH, COMMERCIAL STOCK SIZES AND MANUFACTURERS TOLERANCES ARE NOT INCLUDED.

REQ. PER UNIT	MODEL	PROJECT NO.	ASS'Y. NO.	DATE

STOCK SIZE	THE TECHNICAL MATERIEL CORP. MAMARONECK, NEW YORK	
	TRANSFORMER, ANT. MATCHING	
MATERIAL	WEIGHT PER PC.	TR-113 & TR-124
TYPE & TEMPER	P.B. 4-14-55	WJ
HEAT TREAT. SPEC.	DRAWN	ELEC. DES. APP. MECH. DES. APP.
	CHECKED	FINAL APPROVAL
FINISH & SPEC. NO.	A-999 D	