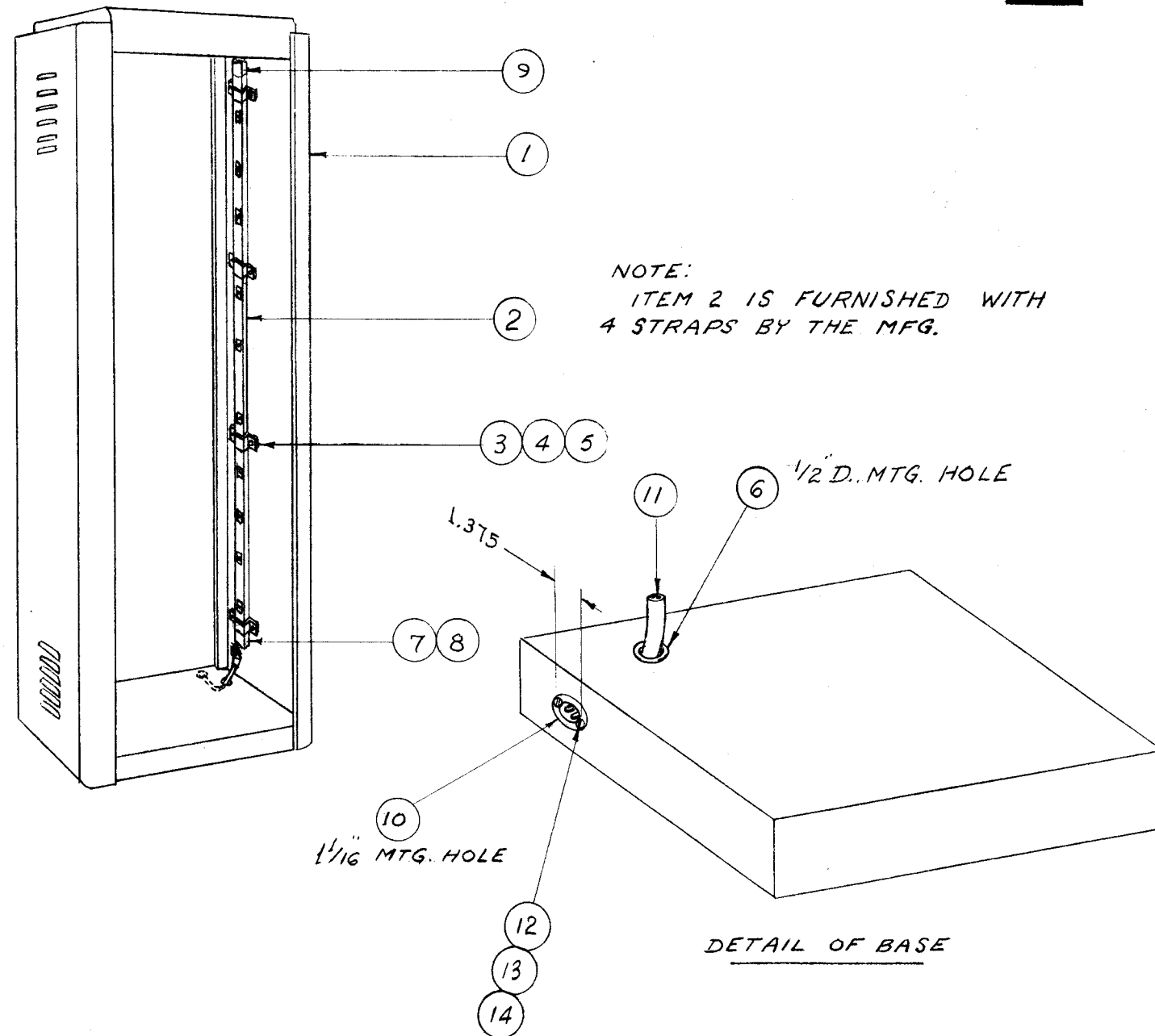


IF IT IS FOUND DESIRABLE TO CHANGE ANY TOLERANCE OR OTHER DETAIL SPECIFIED ON THIS DRAWING NOTIFY THE PURCHASER PROMPTLY.

MAXIMUM ALLOWABLE TOLERANCES HAVE BEEN DETERMINED AND DEVIATIONS WILL BE CAUSE FOR REJECTION. REMOVE ALL BURRS AND SHARP EDGES

A-994



NOTE:
ITEM 2 IS FURNISHED WITH
4 STRAPS BY THE MFG.

2	14	NTH0632BC8	NUT, HEX.
2	13	LWE06MRC	WASHER, LOCK EXT.
2	12	SCBS0632BC5	SCREW, MACHINE
12	11	CA-211-1	ROMEX, CABLE
1	10	JJ-100	RECEPTACLE
1	9	PO-110	END BLANK
1	8	CU-113	ROMEX STRAGHT CONNECTOR
1	7	PO-137-1	STRAIGHT END JUNCTION
1	6	EY-102-14	GROMMET, RUBBER
8	5	NTH0832BC8	NUT, HEX
8	4	LWE08MRC	LOCKWASHER, EXT.
8	3	SCBS0832BC10	SCREW, MACHINE
1	2	PO-109-1	STRIP PLUG-IN
1	1	RK-101	RACK CABINET

REQ.	ITEM	PART NO.	DESCRIPTION	SYMBOL
			THE TECHNICAL MATERIEL CORP.	
			MAMARONECK. NEW YORK	
			RACK CABINET ASSEMBLY	
		STOCK SIZE		
		MATERIAL	WEIGHT PER PC.	
		TYPE & TEMPER		
		HEAT TREAT. SPEC.		
		FINISH & SPEC. NO.		

ISSUE	ITEM	CHANGED FROM	DATE	CN. NO.	DRAFTS	CHECKER	ENG. APP.

TOLERANCES		SCALE:
ALL OTHERS	DEC. DIM. ± FRAC. DIM. ± ANGULAR DIM. ±	DRILL, PUNCH, COMMERCIAL STOCK SIZES AND MANUFACTURERS TOLERANCES ARE NOT INCLUDED.

1	DRP-1C			5-3-55
REQ. PER UNIT	MODEL	PROJECT NO.	ASS'Y. NO.	DATE
USED ON				

10 4-28-55
DRAWN
ELEC. DES. APP. MECH. DES. APP.
CHECKED
FINAL APPROVAL
A-994