

IF IT IS FOUND DESIRABLE TO CHANGE ANY TOLERANCE OR OTHER DETAIL SPECIFIED ON THIS DRAWING NOTIFY THE PURCHASER PROMPTLY.

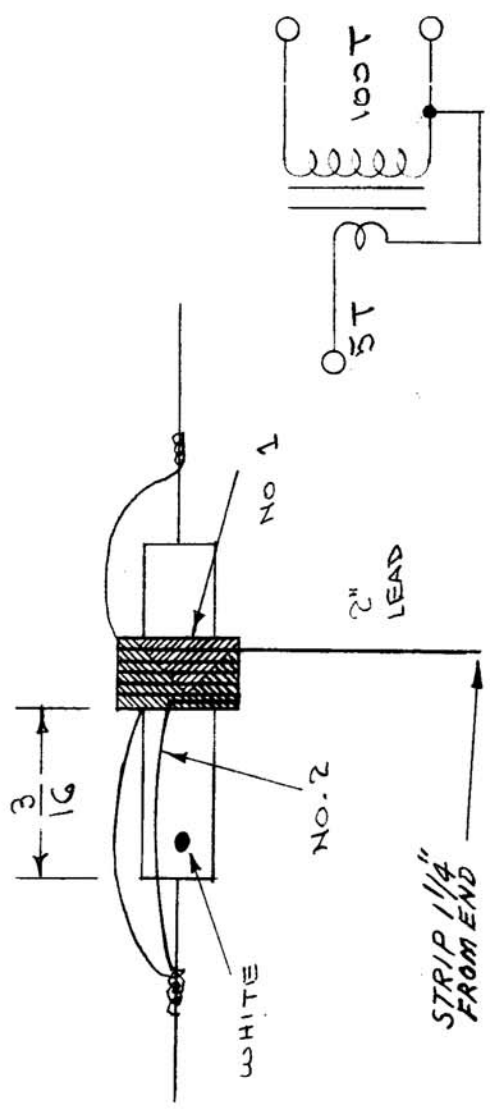
MAXIMUM ALLOWABLE TOLERANCES HAVE BEEN DETERMINED AND DEVIATIONS WILL BE CAUSE FOR REJECTION. REMOVE ALL BURRS AND SHARP EDGES

WINDING:  
 NO 1 - 100 TURNS OF ITEM 2  
 UNIVERSAL WOUND  
 5 TURNS #30 DSC  
 SINGLE LAYER, CLOSE WOUND.

MACHINE DATA:  
 DRIVER GEAR 69  
 CAM GEAR 105  
 CAM .250

ELECTRICAL DATA  
 L - 128 μh (116 - 140)  
 Q - > 100  
 F - 750 Kc.

FABRICATION:  
 STAKE LEADS WITH ITEM 5.  
 BAKE DRY AT 215° F. FOR 1/2 HR.  
 SOLDER LEADS AS SHOWN.  
 COAT WITH ITEM 4.  
 BAKE DRY AT 215° F. FOR 1/2 HR.  
 COLOR CODE AS SHOWN



REQ. ITEM	PART NO.	DESCRIPTION	SYMBOL
X 6	BS-100	SOLDER, SOFT	
X 5	GL-103	CEMENT	
X 4	GL-102	Q MAX	
X 3	WI-107-11	WIRE, MAGNET #30 DSC	
X 2	WI-104-541-SCQS	WIRE, LITZ	
1	CI-114	CORE, POWDERED IRON	

REQ. ITEM	PART NO.	DESCRIPTION	SYMBOL
THE TECHNICAL MATERIEL CORP.			
MAMARONECK, NEW YORK			
AUTO TRANSFORMER			
2nd CONV. T11 G.P.R.			
CDD. A-4-55 P.L.K.			
DRAWN			
ELEC. DES. APP. MECH. DES. APP.			
P.L.K. G.T.O.			
CHECKED			
FINAL APPROVAL			
A-989 6			

ISSUE ITEM	CHANGED FROM	DATE	CN. NO.	DRAFTS CHECKER	ENG. APP.
G	STRIP 1/4" FROM END ADDED	3-6-67	17920	L.A.K.	G.T.O.
F	Color Code Added	7/31/56	6	H.A.D.	P.L.X. A.I.J.
E	TOL. Added To "L"	5/4/56	5	H.A.D.	G.T.O.
D	ITEM 1 WAS CF-116	5/15/56	4	H.A.D.	G.T.O.
C	BAKE TEMP WAS 100° F	10-3-57	3	H.A.D.	G.T.O.
B	POS. OF #2 WINDING CHGD.	7-10-58	2	H.A.D.	G.T.O.
A	Q WAS 150	4-10-58	1	H.A.D.	G.T.O.

TOLERANCES		SCALE
DEC. DIM. ±		
FRAC. DIM. ±		
ANGULAR DIM. ±		
DRILL, PUNCH, COMMERCIAL STOCK SIZES AND MANUFACTURERS TOLERANCES ARE NOT INCLUDED.		