

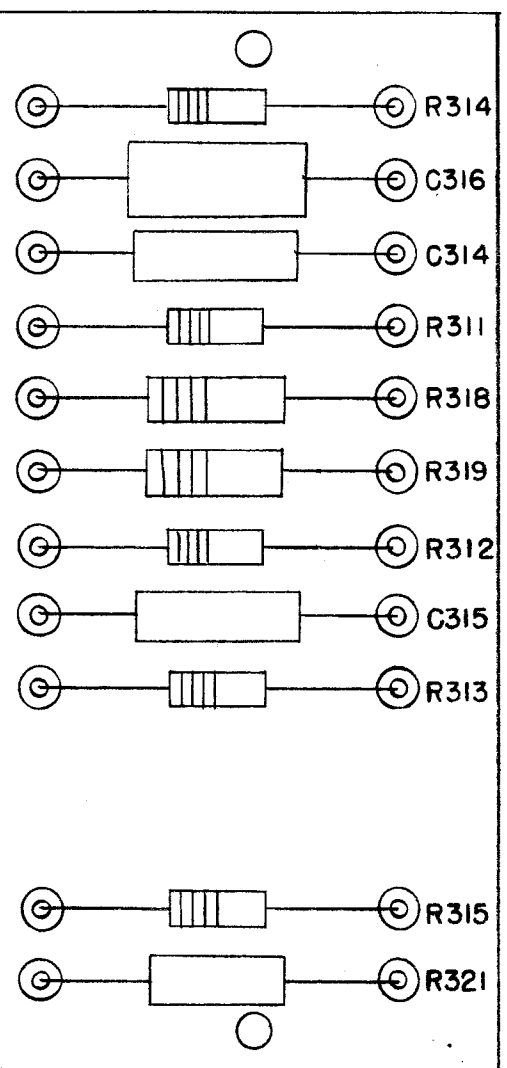
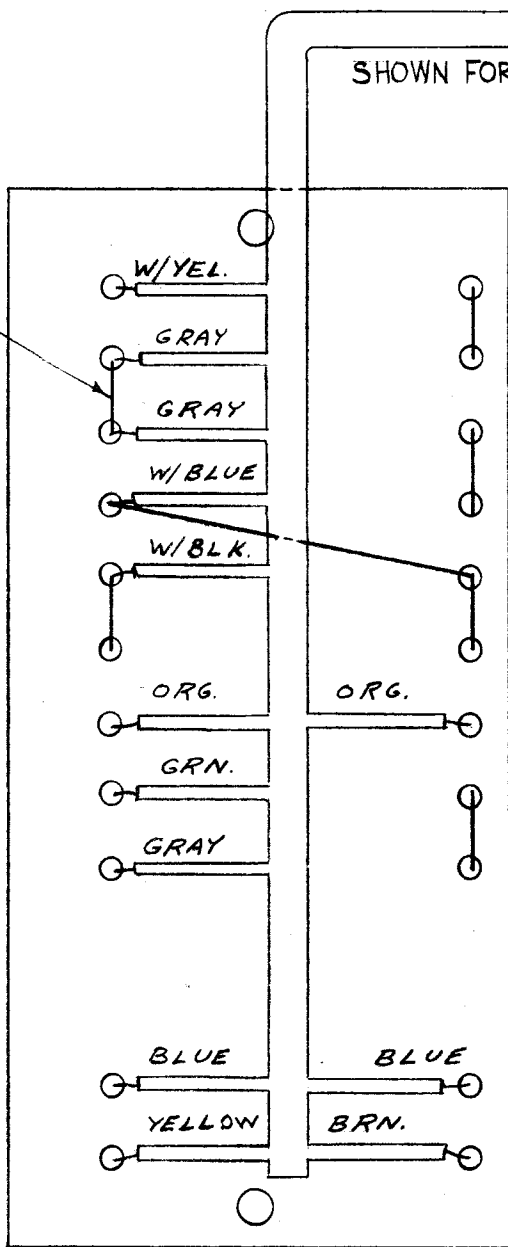
IF IT IS FOUND DESIRABLE TO CHANGE ANY TOLERANCE OR OTHER DETAIL SPECIFIED ON THIS DRAWING NOTIFY THE PURCHASER PROMPTLY.

MAXIMUM ALLOWABLE TOLERANCES HAVE BEEN DETERMINED AND DEVIATIONS WILL BE CAUSE FOR REJECTION. REMOVE ALL BURRS AND SHARP EDGES

A-932 B

SHOWN FOR WIRING REF.

9
ALL JUMPERS



NOTE:
ITEM 11 ALL TERMINALS

X	11	BS-100	SOLDER, SOFT	
	10	DELETED		
X	9	WL-100-7	WIRE, BUSS BAR 22 GA	
1	8	RC42GF120J	RESISTOR-FIXED COMPOSITION	R321
	7	DELETED		
2	6	RC20GF244J	RESISTOR-FIXED COMPOSITION	R312 R315
2	5	RC42GF912J	RESISTOR-FIXED COMPOSITION	R318 R319
2	4	CM35F103F03	CAPACITOR, FIXED MICA	C314 C315 C316
1	3	CN-100-4	CAPACITOR, FIXED	
3	2	RC20GF101J	RESISTOR-FIXED COMPOSITION	
1	1	A-933	HEATER TERM. BD. SUB. ASSY	

R314
R311
R313

B	B/U CLARIFIED		2.13.67	17810	WHD	JCB	
A	3	ITEM 6 QUAN WAS 1, SYMBOL R315 ADDED	6-22-62	6470	W.A.F.	JCB	
	2	ITEM 7 DELETED WAS RC20GF244J					
	1	ITEM 10 DELETED WAS CA-124					
ISSUE	ITEM	CHANGED FROM	DATE	CN. NO.	DRAFTS	CHECKER	ENG. APP.

TOLERANCES		SCALE:	
ALL OTHERS	DEC. DIM. ± FRAC. DIM. ± ANGULAR DIM. ±	DRILL, PUNCH, COMMERCIAL STOCK SIZES AND MANUFACTURERS TOLERANCES ARE NOT INCLUDED.	

1	VOX-3,4,5,6			6-22-62
1	VOX-1,2			1-30-55
REQ. PER UNIT	MODEL	PROJECT NO.	ASSY. NO.	DATE
USED ON				

THE TECHNICAL MATERIEL CORP. MAMARONECK, NEW YORK	
HEATER TERM. BD. ASSY.	
CDD. 1-30-55	
DRAWN	ELEC. DES. APP. MECH. DES. APP.
CHECKED	FINAL APPROVAL
A-932 B	