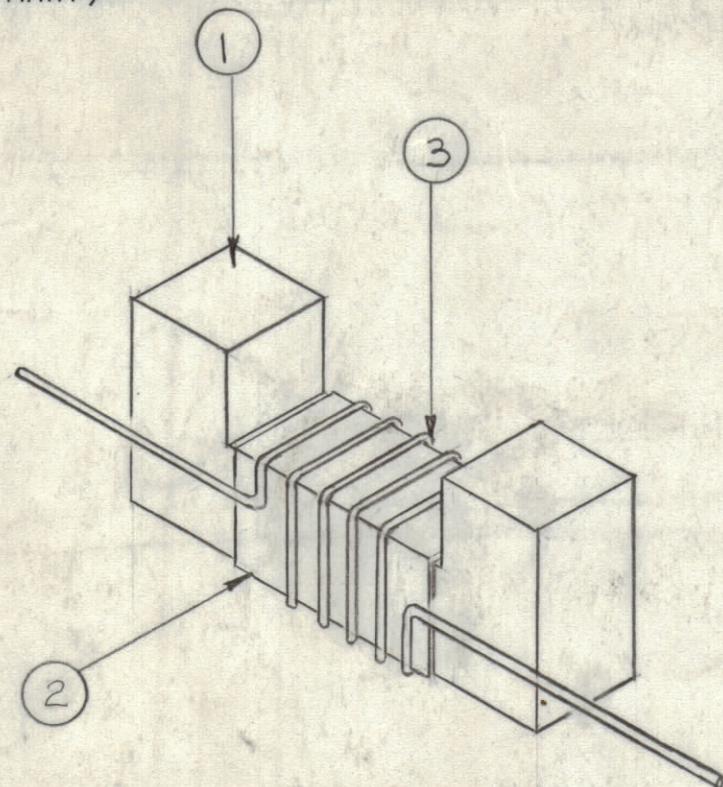
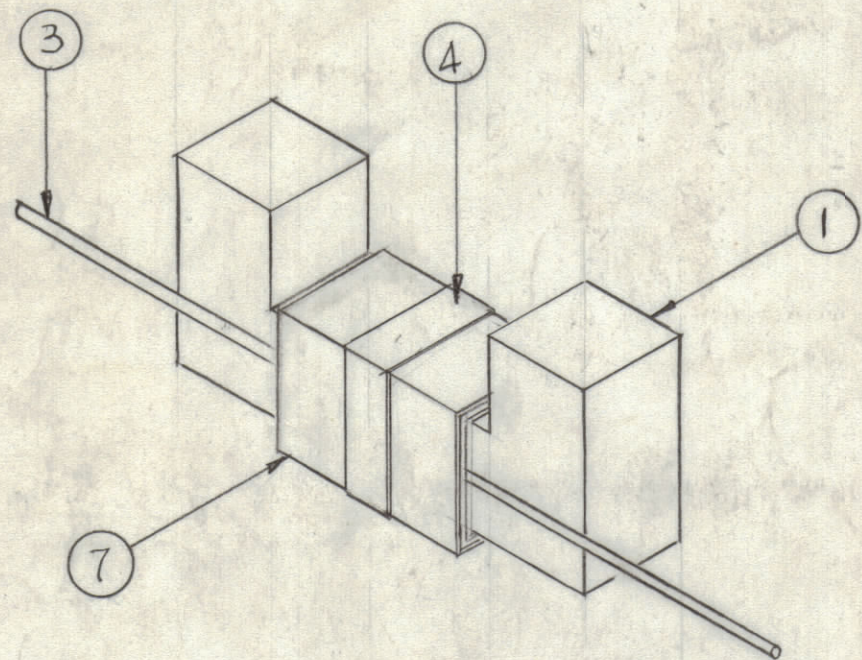


STEP 1 (PRIMARY)



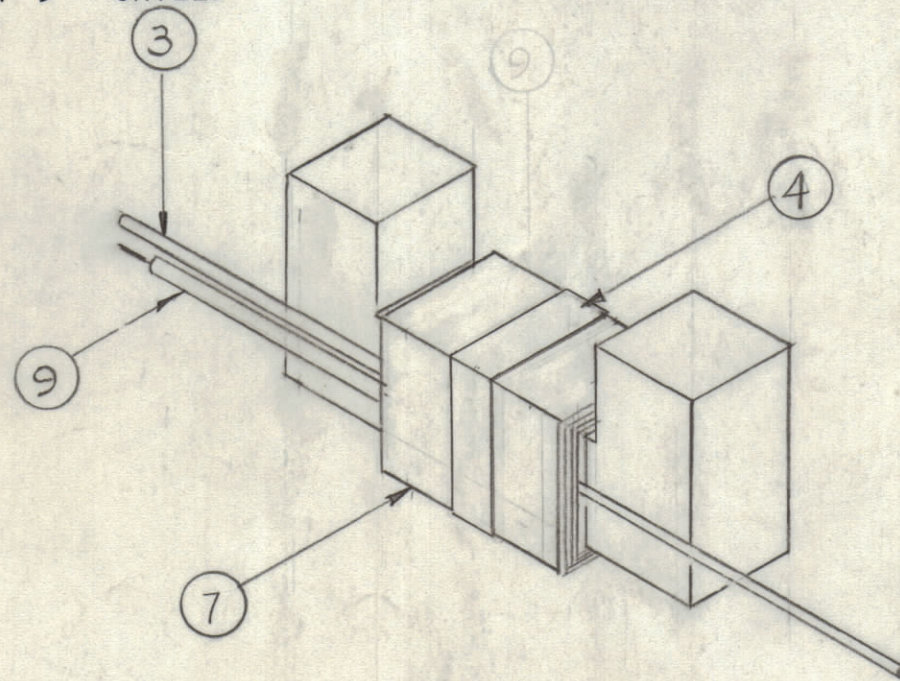
- A- WIND ON ONE (1) LAYER OF 1-1/4" TAPE (ITEM 2) ONTO CORE (ITEM 1)
- B- WIND ON FIVE (5) TURNS OF ITEM 3, WIDELY SPACED AS SHOWN
- C- SECURE WINDING ENDS TO COIL FORM WITH SMALL PIECES OF (ITEM 4) 1/4" TAPE

STEP 2



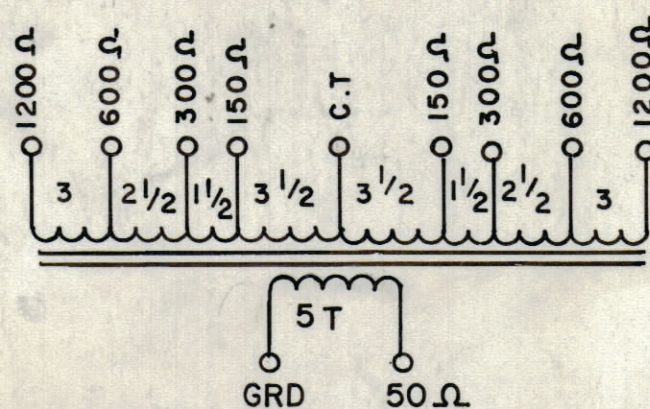
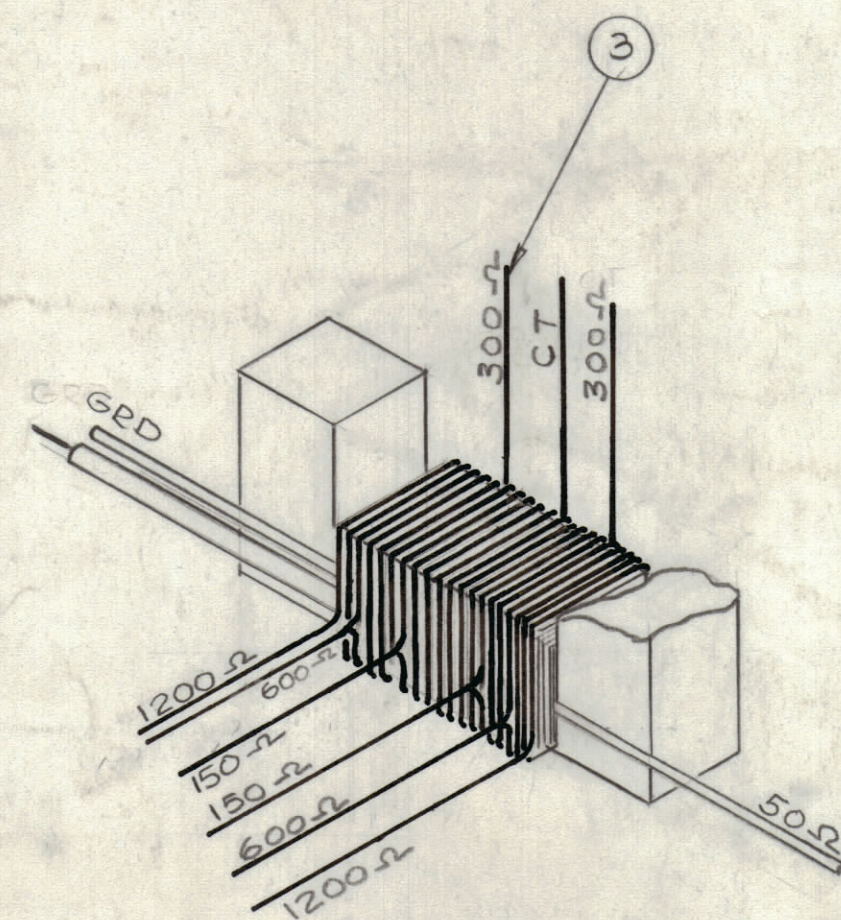
- A- WIND ON 2 LAYERS OF ITEM 7, SECURE WITH 1 TURN OF 1/4" TAPE (ITEM 4)

STEP 3 SHIELD



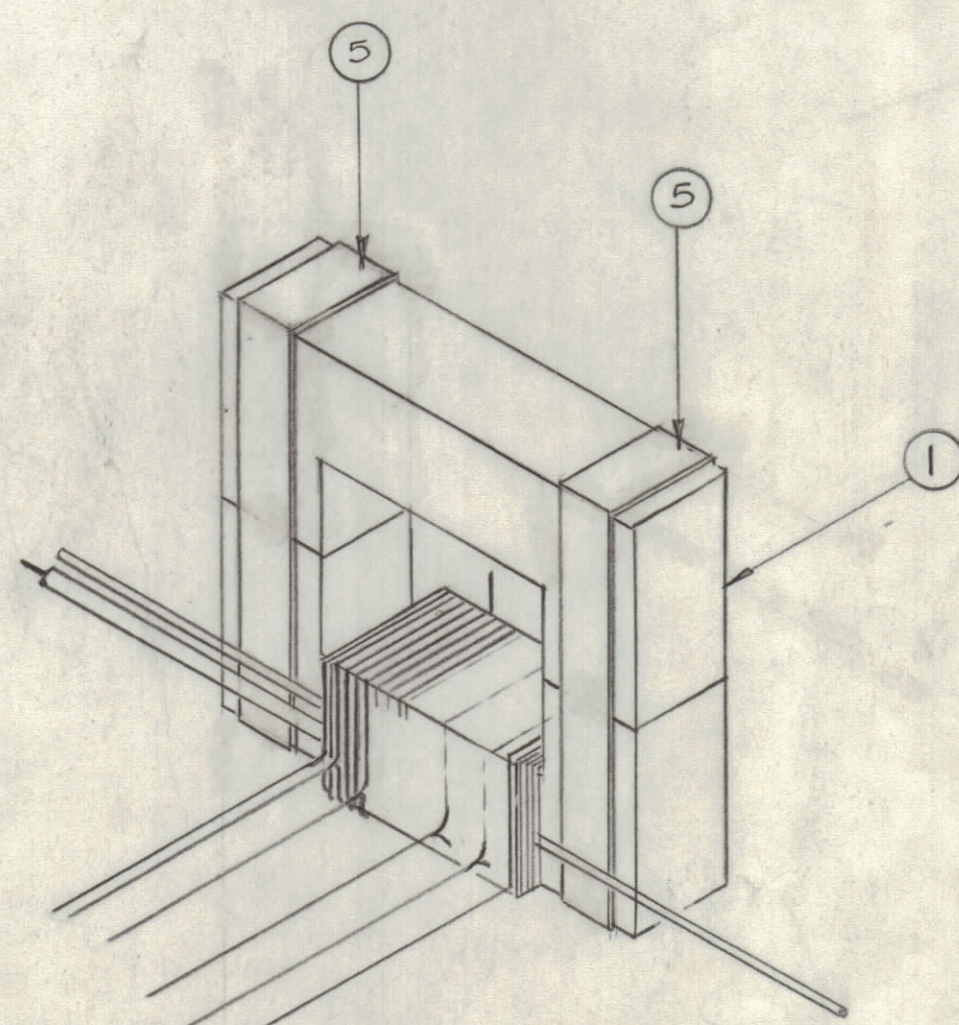
- A- WRAP SHIELD ASSY (ITEM 9) OVER TEFLON (ITEM 7) BRING OUT CONTACT AS SHOWN
- B- SECURE SHIELD ASSY TO COIL FORM WITH ONE (1) FULL TURN OF 1/4" TAPE (ITEM 4)
- C- WRAP ON OVER SHIELD ASSY 4 LAYERS OF (ITEM 19) AND SECURE WITH 1 FULL TURN OF 1/4" TAPE (ITEM 4) AS SHOWN

STEP 4 SECONDARY



- A- WIND ON SECONDARY (ITEM 3) AS SHOWN IN DRAWING AND SCHEMATIC
- B- SECURE ENDS WITH SMALL PIECES OF (ITEM 4) 1/4" TAPE

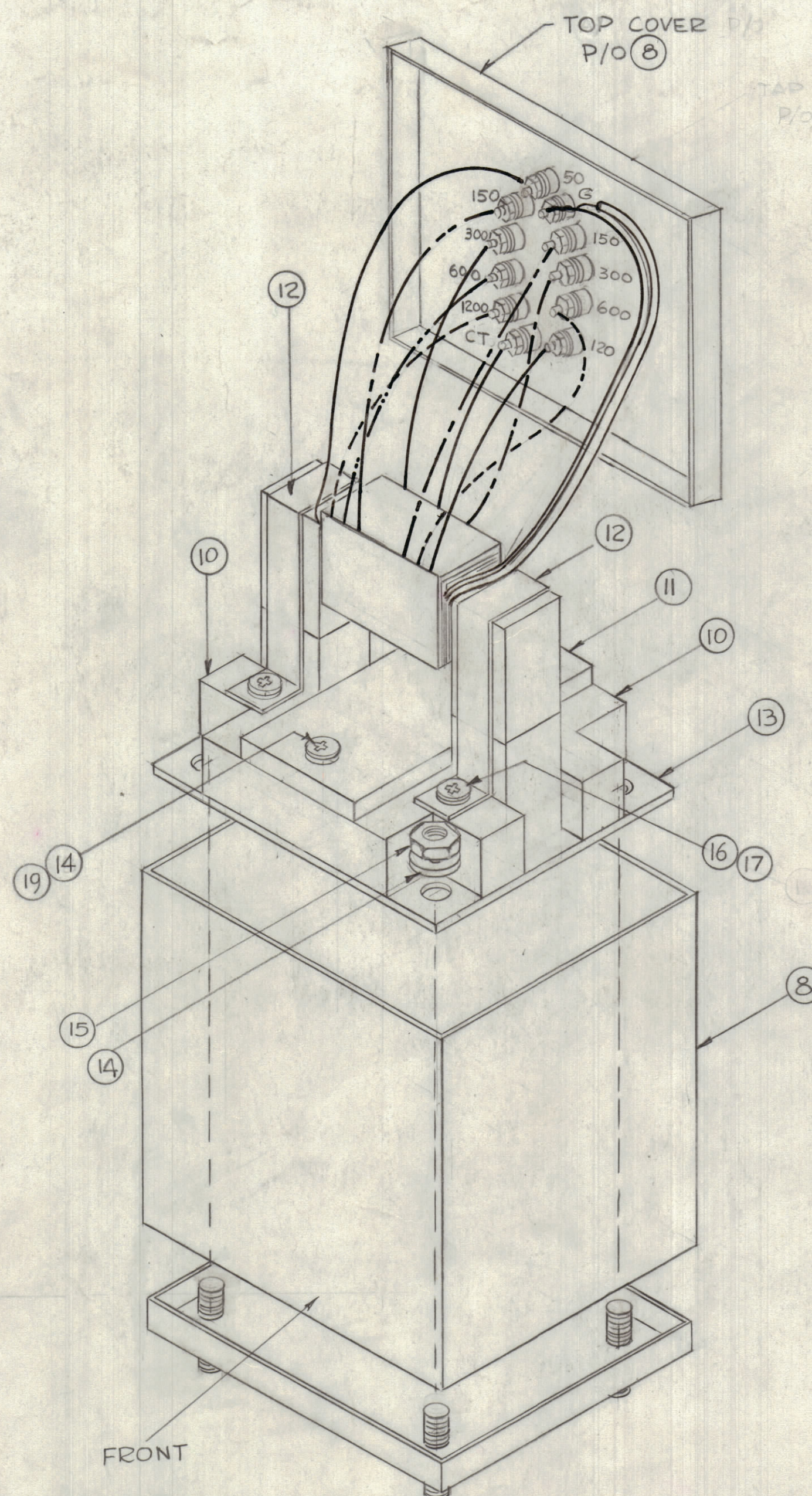
STEP 5



- A- SECURE 2nd CORE TO WOUND WITH (ITEM 5) 1/2" TAPE AS SHOWN TWO (2) LAYERS EACH SIDE

NOTE: THE MATING SURFACES MUST BE SMOOTH AND FREE FROM ALL DIRT.

STEP 6 INSTALLATION INTO CAN



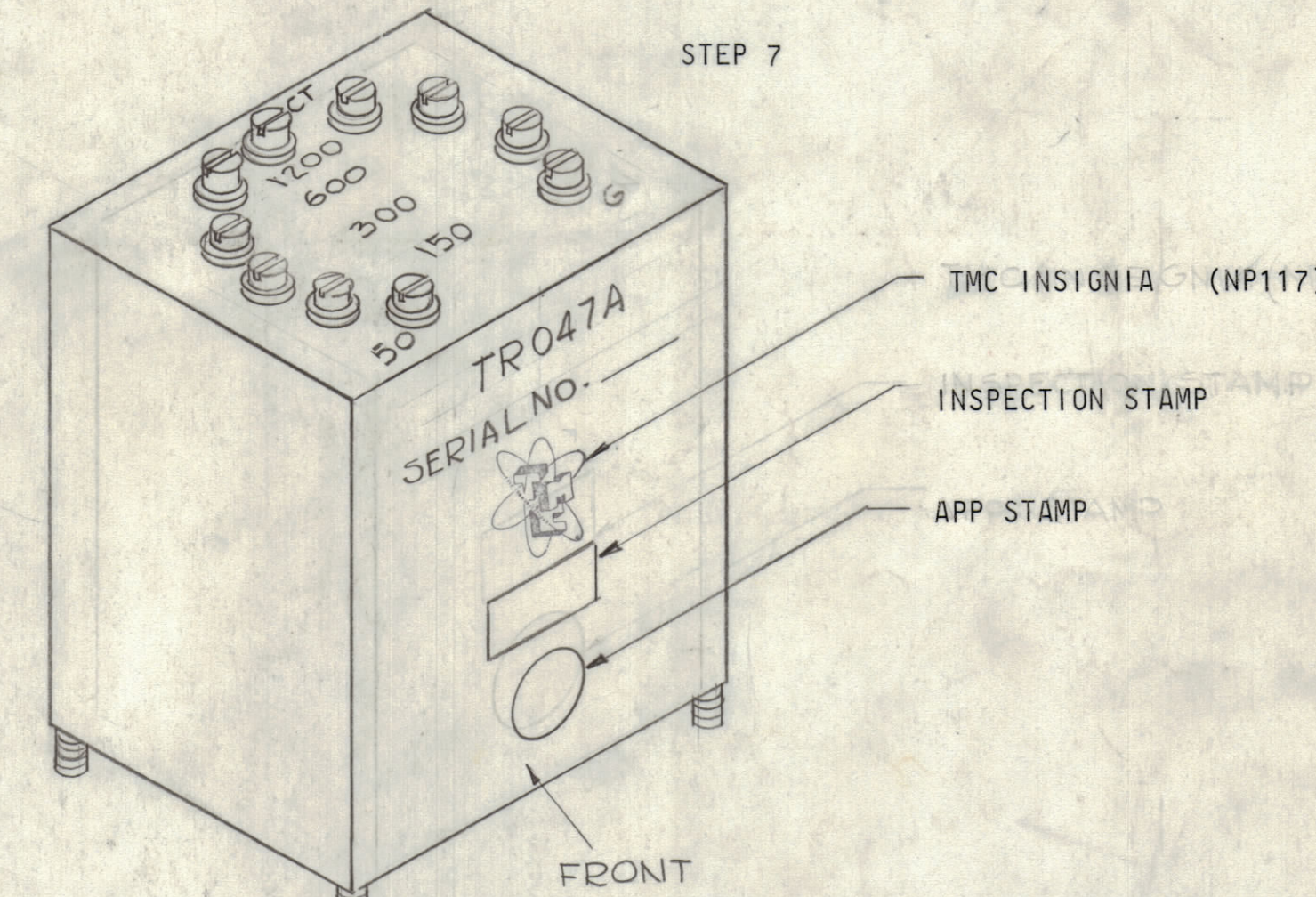
- A- MAKE SOLDER CONNECTIONS AS SHOWN
- B- INSTALL PLATE (ITEM 11) AND SUPPORT (ITEM 10) TO MTG PLATE (ITEM 13) AS SHOWN
- C- INSTALL STRAPS (ITEM 12) TO SUPPORT (ITEM 10) AS SHOWN
- D- SECURE XFMR TO BOTTOM COVER WITH ITEM 15 AND ITEM 14 AS SHOWN
- E- TEST AS PER S1171.

**NOT TO BE RELEASED W/O AUTHORIZATION**  
 AUTH. BY: \_\_\_\_\_  
 DATE: \_\_\_\_\_

1	TR047A	
QTY / UNIT	MODEL USED ON	ASS'Y NO.
APPLICATION		
CODE		
MATERIAL		
FINISH		

UNLESS OTHERWISE SPECIFIED DIMENSIONS ARE IN INCHES AND INCLUDE CHEMICALLY APPLIED OR PLATED FINISHES	
TOLERANCES ON	
DECIMALS	FRACTIONS
.X ± .05	± 1/64
.XX ± .01	ANGLES
.XXX ± .005	± 0° -30'

REVISIONS						
ZONE	LTR	DESCRIPTION	DATE	E.M.N.NO	DRAFT	CHKD APPD
	A	REVISED & REDRAWN FROM SIZE 4	3-1-67	17873	G.D.L.	J.P.B.



- A- SOLDER TOP AND BOTTOM COVERS
- B- SMOOTH ALL SEAMS
- C- FINISH-- DEGREASE  
S114 ZINC CHROMATE PRIMER  
S115 SMOOTH ENAMEL GRAY
- D- MARK TMC PART NUMBER AND SERIAL NUMBER ON CASE AS SHOWN, 1/8" HIGH BLACK GOTHIC

QTY. REQ.	ITEM	PART NO.	DESCRIPTION	SYMBOL
X	19	PX669-5	TEFLON .005 X 1-1/4" X 10"	
2	18	SCBP0832BN12	SCREW, MACHINE	
4	17	LW106MRN	LOCKWASHER, INT TOOTH	
4	16	SCBP0632BN4	SCREW, MACHINE	
4	15	NTH0832BN8	NUT, HEX	
6	14	LW108MRN	LOCK WASHER, INT TOOTH	
1	13	MS5101	PLATE, MTG XFMR	
2	12	MS5102	STRAP, XFMR TIE DOWN	
1	11	PX1014	PLATE XFMR TIE DOWN	
2	10	PX1015	SUPPORT BAR, XFMR	
1	9	A4578	SHIELD, ASSY	
1	8	BX127-2	CASE, TRANSFORMER	
X	7	PX669-4	TEFLON SHEET	
X	6	BS100	SOLDER, TIN ALLOY	
X	5	TA102-3	INSULATION TAPE, ELEC PLST	
X	4	TA102-1	INSULATION TAPE, ELEC PLST	
X	3	WI125-5	WIRE, ELEC MAG H.C.E.R.	
X	2	TA108-8	INSULATION TAPE, ELEC SIZE 1-1/4"	
2	1	CI101-1-Q	CORE, U	

LIST OF MATERIAL			
QTY.	ITEM	PART NO.	DESCRIPTION
FINAL APPROVAL			
MECH. DES.		DATE	
ELECT. DES.		DATE	
CHECKED		DATE	
DRAWN		DATE	
THE TECHNICAL MATERIEL CORP. MAMARONECK, NEW YORK			
TRANSFORMER ASSY TR 047A			
SIZE	CODE IDENT. NO.	DWG NO.	
D	82679	A 921	
SCALE Do NOT SCALE			
SHEET			OF

**NOTICE TO PERSONS RECEIVING THIS DRAWING**  
 THE TECHNICAL MATERIEL CORPORATION claims proprietary right in the material disclosed herein. This drawing is issued in confidence for engineering information only and may not be reproduced or used to manufacture anything shown hereon without permission from THE TECHNICAL MATERIEL CORPORATION to the user. This drawing is loaned for mutual assistance and is subject to recall at any time.