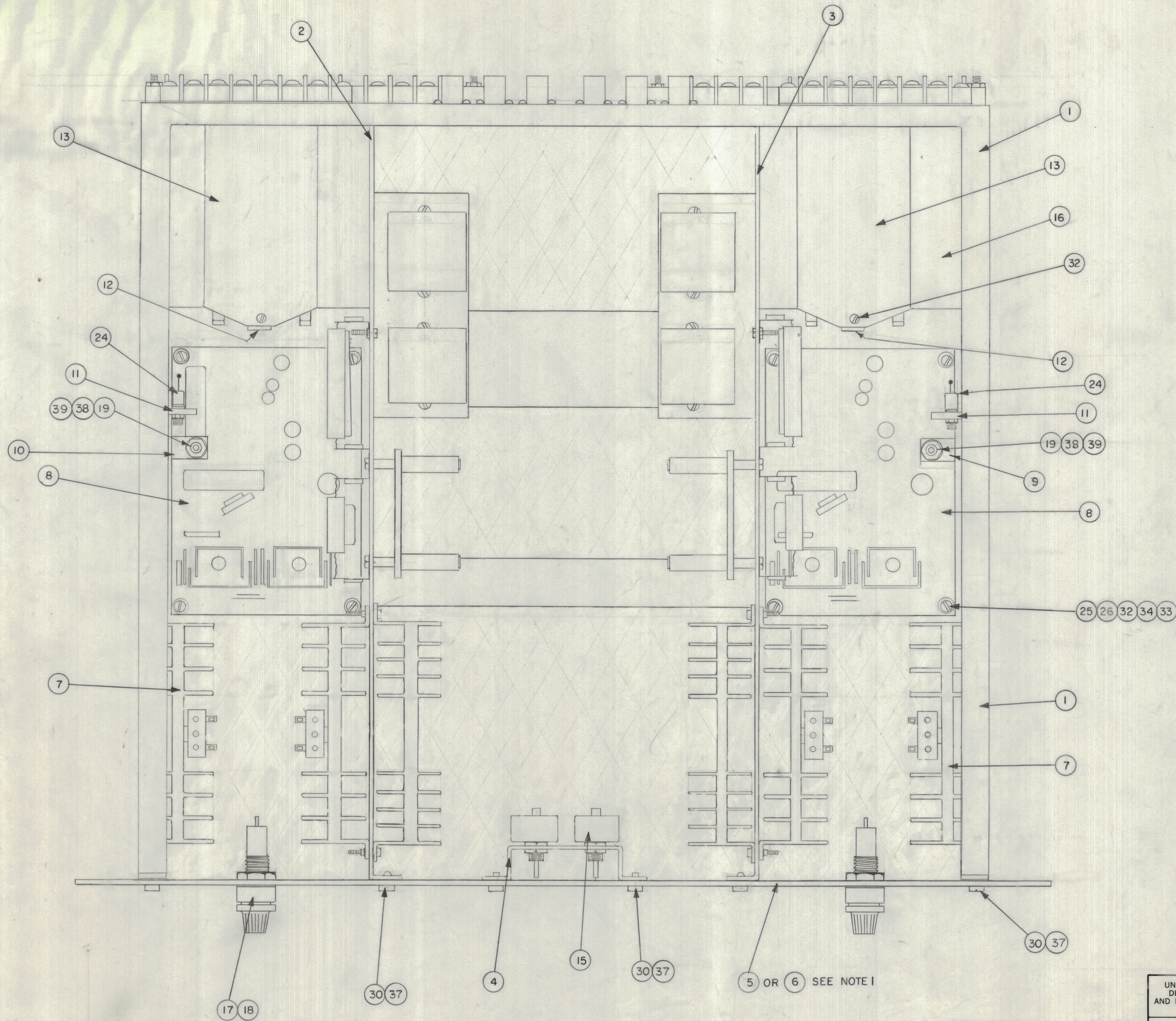


REVISIONS						
ZONE	LTR	DESCRIPTION	DATE	E.M.N.NO	DRAFT	CHKD APPD
X		DWG. No. WAS 40N12D712B	7-27-68		C. G. 008	
Ø		ORIGINAL RELEASE FOR PRODUCTION	11/1/69		P.S.	

CHANGES

NOTE:

- ITEM -5 FRONT PANEL (1 REQ) USED ON A8053-40 ASSY FOR CHANNELS 1 AND 2
- ITEM -6 FRONT PANEL (1 REQ) USED ON A8053-41 ASSY FOR CHANNELS 3 AND 4
- TOP COVER (ITEM-14) NOT SHOWN



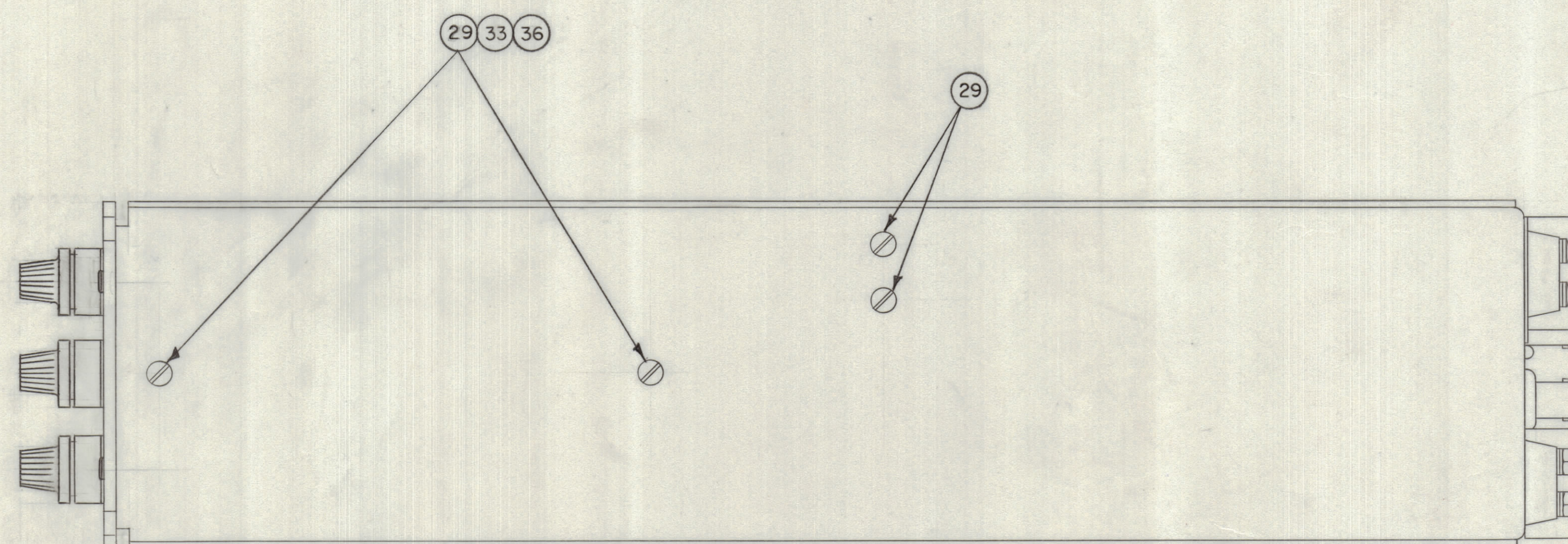
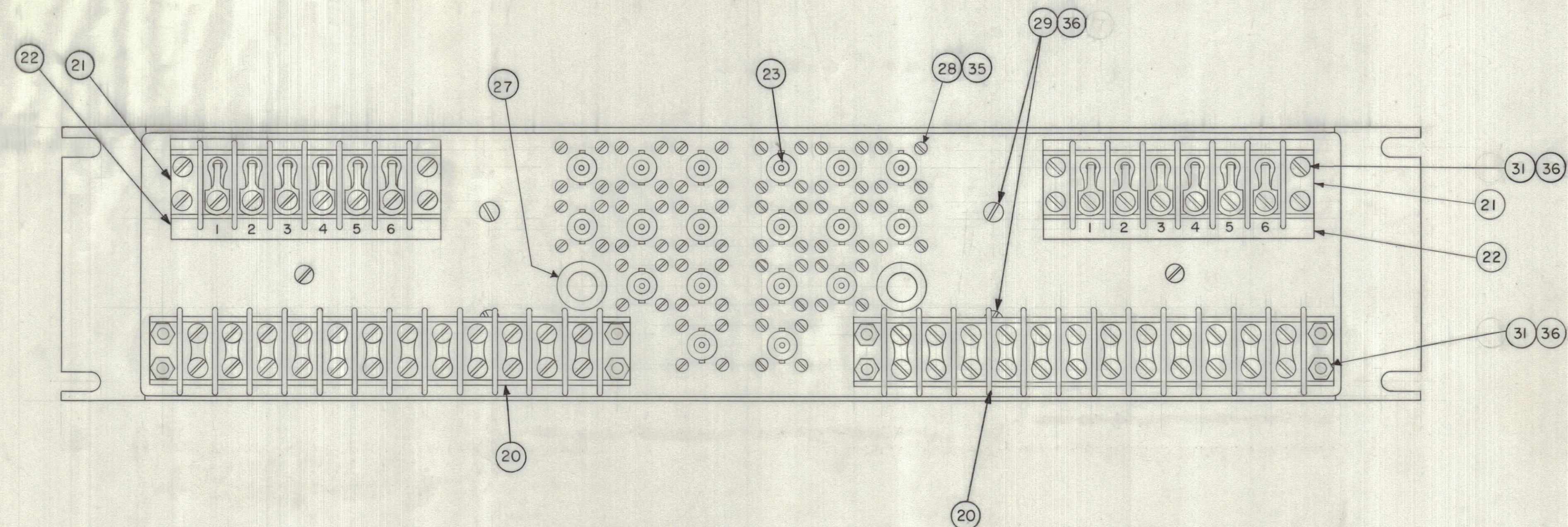
SEE PL A8053720 FOR PARTS LIST

1		SPT3KVHF	AX2067-2
1		SPT3KVHF	AX2067-1
QTY / UNIT	MODEL USED ON	ASS'Y NO.	
APPLICATION			
CODE			
MATERIAL			
FINISH			

NOTICE TO PERSONS RECEIVING THIS DRAWING
 THE TECHNICAL MATERIEL CORPORATION claims proprietary right in the material disclosed hereon. This drawing is issued in confidence for engineering information only and may not be reproduced or used to manufacture anything shown hereon without permission from THE TECHNICAL MATERIEL CORPORATION to the user. This drawing is loaned for mutual assistance and is subject to recall at any time.

QTY. REQ.	ITEM	PART NO.	DESCRIPTION	SYMBOL
LIST OF MATERIAL				
THE TECHNICAL MATERIEL CORP. MAMARONECK, NEW YORK				
ASSEMBLY				
TOP VIEW				
BIAS CONTROL & AM MODULATOR				
SIZE	CODE IDENT. NO.	DWG. NO.	ISSUE	
D	82679	4A8053	Ø	
SCALE				
				SHEET 1 OF 2

REVISIONS						
ZONE	LTR	DESCRIPTION	DATE	E.M.N.NO	DRAFT	CHKD APPD
	X	40N12D7128 DWG No CHANGE	8/12/68		CRAB	
		ORIGINAL RELEASE FOR PRODUCTION	10/1/68		EB	



NOTE: SEE A-8053 FOR PARTS LIST.

SPT 3KVHF		AX8067-2
QTY / UNIT	MODEL USED ON	ASS'Y NO.
	APPLICATION	
	CODE	
<small>NOTICE TO PERSONS RECEIVING THIS DRAWING</small> <small>THE TECHNICAL MATERIEL CORPORATION claims proprietary right in the material disclosed hereon. This drawing is issued in confidence for engineering information only and may not be reproduced or used to manufacture anything shown hereon without permission from THE TECHNICAL MATERIEL CORPORATION to the user. This drawing is loaned for mutual assistance and is subject to recall at any time.</small>		

UNLESS OTHERWISE SPECIFIED DIMENSIONS ARE IN INCHES AND INCLUDE CHEMICALLY APPLIED OR PLATED FINISHES	
DECIMALS	FRACTIONS
.X ± .05	± 1/64
.XX ± .01	ANGLES
.XXX ± .005	± 0° -30'

QTY. REQ.	ITEM	PART NO.	DESCRIPTION	SYMBOL
LIST OF MATERIAL				
FINAL APPROVAL		DATE	THE TECHNICAL MATERIEL CORP. MAMARONECK, NEW YORK ASSEMBLY RIGHT SIDE & REAR VIEWS BIAS CONTROL & AM MODULATOR	
MECH. DES.		DATE		
ELECT. DES.		DATE		
CHECKED		DATE		
DRAWN		DATE	SIZE	CODE IDENT. NO.
			D	82679
			SCALE	ISSUE
			1-1	2 OF 2