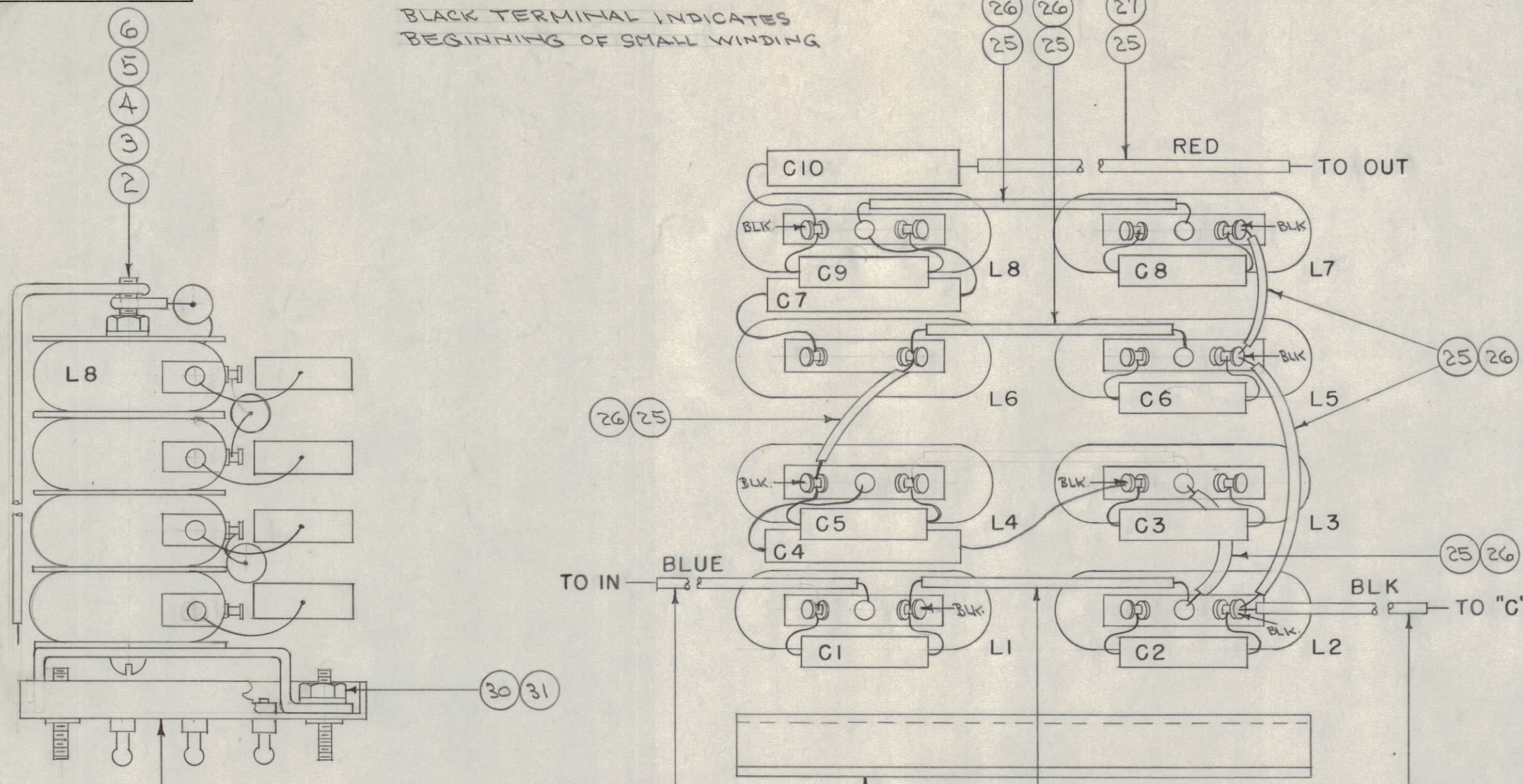
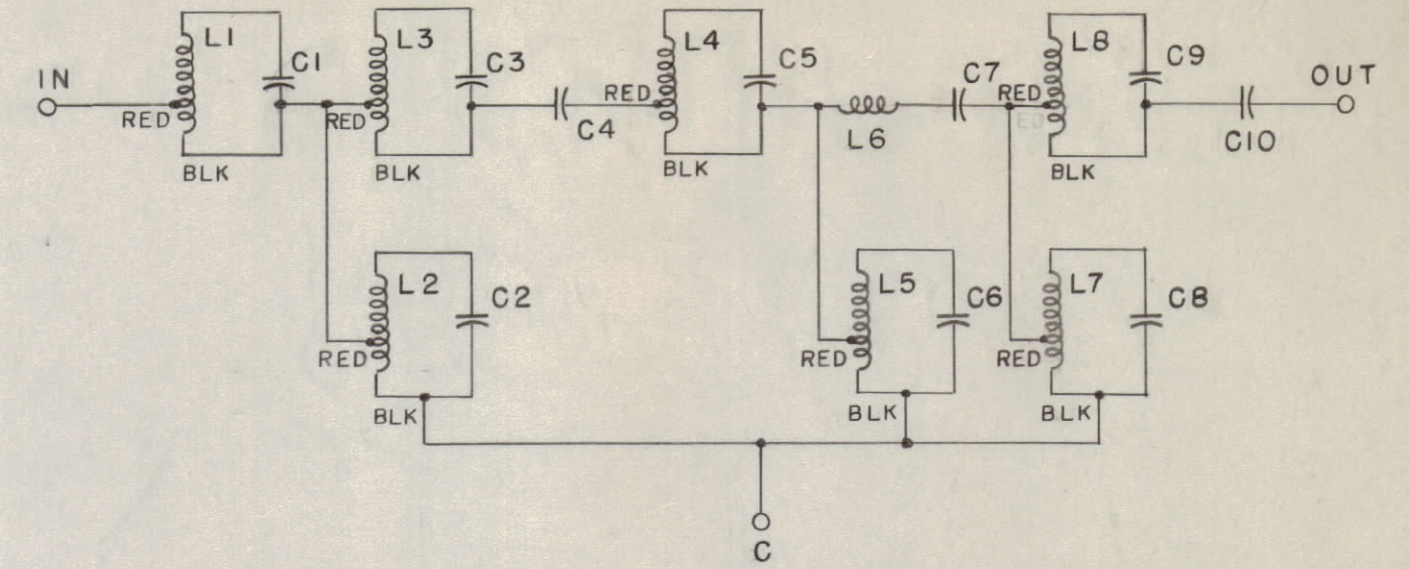
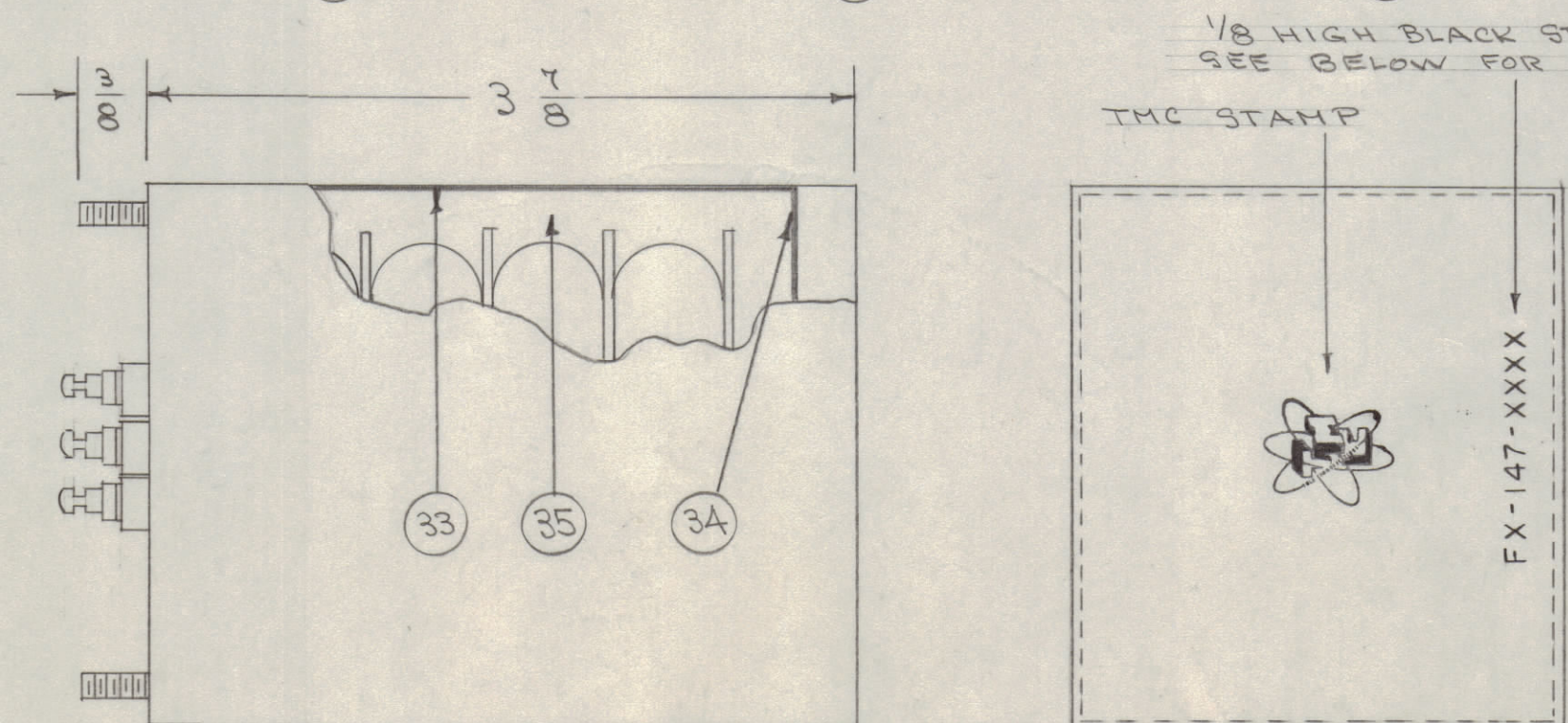
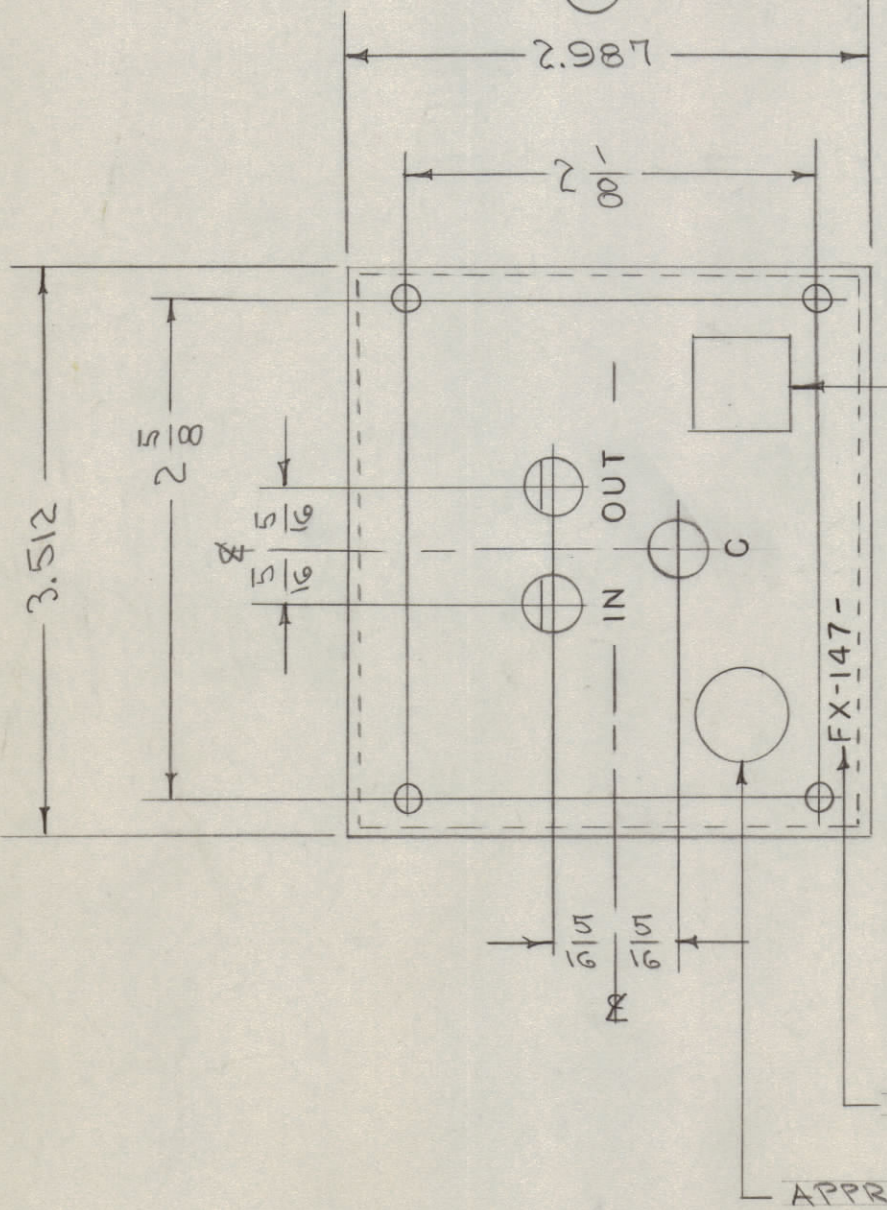


IF IT IS FOUND DESIRABLE TO CHANGE ANY TOLERANCE OR OTHER DETAIL SPECIFIED ON THIS DRAWING NOTIFY THE PURCHASER PROMPTLY.
 MAXIMUM ALLOWABLE TOLERANCES HAVE BEEN DETERMINED AND DEVIATIONS WILL BE CAUSE FOR REJECTION. REMOVE ALL BURRS AND SHARP EDGES

BLACK TERMINAL INDICATES BEGINNING OF SMALL WINDING



X	35	GL-110	COMPOUND, POTTING	
1	34	IM-146	INSULATION, TOP	
1	33	IM-145	INSULATION, SIDES	
X	32	BS-100	SOLDER, SOFT	
2	31	NTH0832BC10	NUT, HEX	
2	30	LWE08MRC	WASHER, LOCK	
1	29	BX-121	CAN & COVERS	
X	28	PX-104-6-022	INSULATION, SLEEVING (BLK)	
X	27	PX-104-3-022	INSULATION, SLEEVING (RED)	
X	26	PX-104-1-022	INSULATION, SLEEVING (BLK)	
X	25	WL-100-7	WIRE, BUSS BAR 22GA.	
1	24	CL-201-369-TR41	COIL	L8
1	23	CL-201-665-18R74	"	L7
1	22	CL-200-A-105E	"	L6



- 1- RESONATE TANK CIRTS. AS PER CHART BELOW BEFORE ASSY. OF UNIT
- 2- BEFORE SOLDERING BOTTOM COVER LINE CAN WITH ITEMS 33 & 34. TEST UNIT (S-242).
- 3- REMOVE ITEM 34 AND POUR COMPOUND TO WITHIN 1/4" OF TOP. REPLACE ITEM 34.
- 4- TEST UNIT AGAIN (S-242).
- 5- FINISH SOLDERING COVERS.

NOTE - FINISH S-114 - ZINCHROMATE PRIMER
 S-153 - GREY ENAMEL
 DO NOT PAINT TERMINAL END.

INSPECTION STAMP
 1/8 METAL STAMP
 APPROVAL STAMP

L1	L2	L3	L4	L5	L6	L7	L8
L1-C1	L2-C2	L3-C3	L4-C5	L5-C6	L6-C7	L7-C8	L8-C9
1497	4067	3907	3800	2646	2418	2522	3750

ISSUE	ITEM	CHANGED FROM	DATE	CN. NO.	DRAFTS	CHECKER	ENG. APP.
TOLERANCES		SCALE:					
ALL OTHERS	DEC. DIM. ±	DRILL, PUNCH, COMMERCIAL STOCK SIZES AND MANUFACTURERS TOLERANCES ARE NOT INCLUDED.					
	FRAC. DIM. ±						
	ANGULAR DIM. ±						

RES. FREQ. 13 ~
 SEE S-206 FOR METHOD.

1	FX-147-	PROJECT NO.	ASS'Y. NO.	DATE
REQ PER UNIT	MODEL	PROJECT NO.	ASS'Y. NO.	DATE
				11-17-54
				USED ON

1	21	CL-201-655-15R62	COIL	L5
1	20	CL-201-675-6R29	"	L4
1	19	CL-201-665-10R64	"	L3
1	18	CL-201-625-21R7	"	L2
1	17	CL-201-585-18R21	"	L1
1	16	CN108D9832E	CAPACITOR, FIXED	C10
1	15	CM30D502G	"	C9
1	14	CM35D622G	"	C8
1	13	CN108D4312E	"	C7
1	12	CM35D562G	"	C6
1	11	CM35D272G	"	C5
1	10	CN108D8052E	"	C4
1	9	CM35D272G	"	C3
1	8	CM35D242G	"	C2
1	7	CM35D202G	"	C1
2	6	NTH0632BC8	NUT, HEX	
2	5	FW06MRC	WASHER, FLAT	
2	4	LWE06MRC	WASHER, LOCK	
2 1/2	3	PX-104-1-133	INSULATION, SLEEVING (BLK.)	
2	2	SCR30632BC48	SCREW, MACHINE 3"	
1	1	MS-569	BRACKET, COIL	

REQ. ITEM	PART NO.	DESCRIPTION	SYMBOL
THE TECHNICAL MATERIEL CORP. MAMARONECK, NEW YORK			
STOCK SIZE			
MATERIAL WEIGHT PER PC.			
TYPE & TEMPER			
HEAT TREAT. SPEC.			
FINISH & SPEC. NO.			

A-888