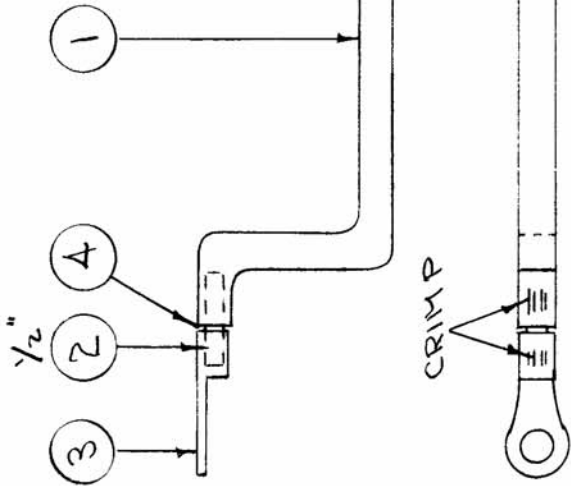


IF IT IS FOUND DESIRABLE TO CHANGE ANY TOLERANCE OR OTHER DETAIL SPECIFIED ON THIS DRAWING NOTIFY THE PURCHASER PROMPTLY.

MAXIMUM ALLOWABLE TOLERANCES HAVE BEEN DETERMINED AND DEVIATIONS WILL BE CAUSE FOR REJECTION. REMOVE ALL BURRS AND SHARP EDGES



NOTE POSITION OF TERMINALS

ISSUE ITEM	CHANGED FROM	DATE	CN. NO.	DRAFTS	CHECKER	ENG. APP.
A 1	FINISH WAS S10S	9/28/66	16895	NCA	9/28/66	
SCALE						
TOLERANCES						
DEC. DIM. ±						
ALL FRAC. DIM. ±						
OTHERS ANGULAR DIM. ±						
DRILL, PUNCH, COMMERCIAL STOCK SIZES AND MANUFACTURERS TOLERANCES ARE NOT INCLUDED.						

REQ. PER UNIT	MODEL	PROJECT NO.	USED ON
1	BAC-2		
		ASSY. NO.	DATE
		A-868	10-25-64

A-871 A

X 4	BS-100	SOLDER, SOFT	SYMBOL
2	TE-141-3	TERMINAL	
1"	WL-100-1	WIRE, BUSS BAR 10 GA.	
1	FP-136	JUMPER NO. A.	
REQ. ITEM	PART NO.	DESCRIPTION	SYMBOL
		THE TECHNICAL MATERIEL CORP.	
		MAMARONECK. NEW YORK	
		JUMPER NO. A ASSY	
		BAC-2	
		CDD 10-25-64	
		DRAWN	
		ELEC. DES. APP.	
		MECH. DES. APP.	
		CHECKED	
		FINAL APPROVAL	
		A-871	A