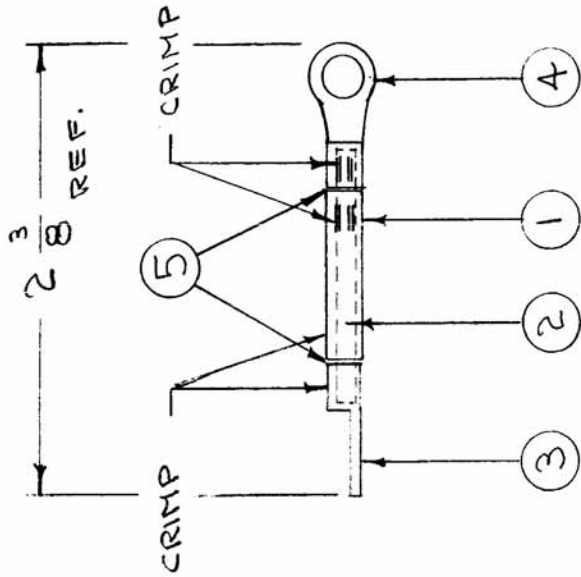


IF IT IS FOUND DESIRABLE TO CHANGE ANY TOLERANCE OR OTHER DETAIL SPECIFIED ON THIS DRAWING NOTIFY THE PURCHASER PROMPTLY.

MAXIMUM ALLOWABLE TOLERANCES HAVE BEEN DETERMINED AND DEVIATIONS WILL BE CAUSE FOR REJECTION. REMOVE ALL BURRS AND SHARP EDGES



A-867 A

USED ON
 MODEL PROJECT NO. ASSY. NO. DATE
 BAC-2 A-192 10-22-54

REQ. PER UNIT
 3

REQ. ITEM	PART NO.	DESCRIPTION	SYMBOL
X 5	BS-100	SOLDER, SOFT	
1 4	TE-141-3	TERMINAL	
1 3	TE-143	TERMINAL	
15/16 2	WL-100-1	WIRE, BUSS BAR 10 GA.	
1 1	FP-133	JUMPER	

THE TECHNICAL MATERIEL CORP.
 MAMARONECK, NEW YORK
 JUMPER NO. 1 ASSY.
 BAC-2

C.D.D. 10-22-54
 DRAWN ELEC. DES. APP. MECH. DES. APP.
 CHECKED
 FINAL APPROVAL

HEAT TREAT. SPEC.
 SILVER PLATE - S245
 CLEAR IRIDITE - S423
 FINISH & SPEC. NO.

ISSUE ITEM	CHANGED FROM	DATE	CN. NO.	DRAFTS CHECKER	ENG. APP.
A 1	FINISH WAS S105	9-28-66	16895	HLA	gfo

SCALE
 DRILL, PUNCH, COMMERCIAL STOCK SIZES AND MANUFACTURERS TOLERANCES ARE NOT INCLUDED.

TOLERANCES
 DEC. DIM. ±
 ALL FRAC. DIM. ±
 OTHERS ANGULAR DIM. ±