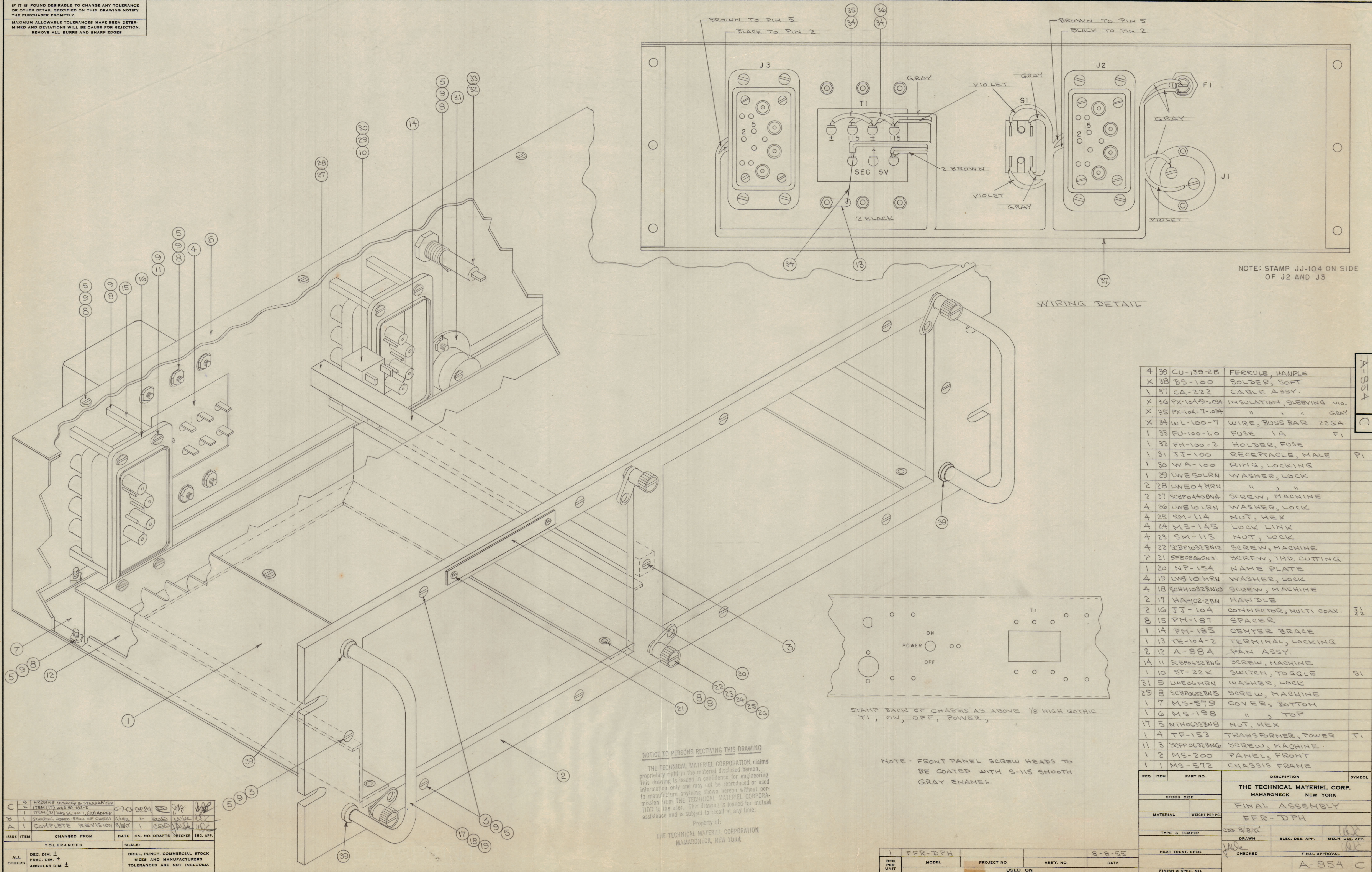


IF IT IS FOUND DESIRABLE TO CHANGE ANY TOLERANCE OR OTHER DETAIL SPECIFIED ON THIS DRAWING NOTIFY THE PURCHASER PROMPTLY.
 MAXIMUM ALLOWABLE TOLERANCES HAVE BEEN DETERMINED AND DEVIATIONS WILL BE CAUSE FOR REJECTION. REMOVE ALL BURRS AND SHARP EDGES

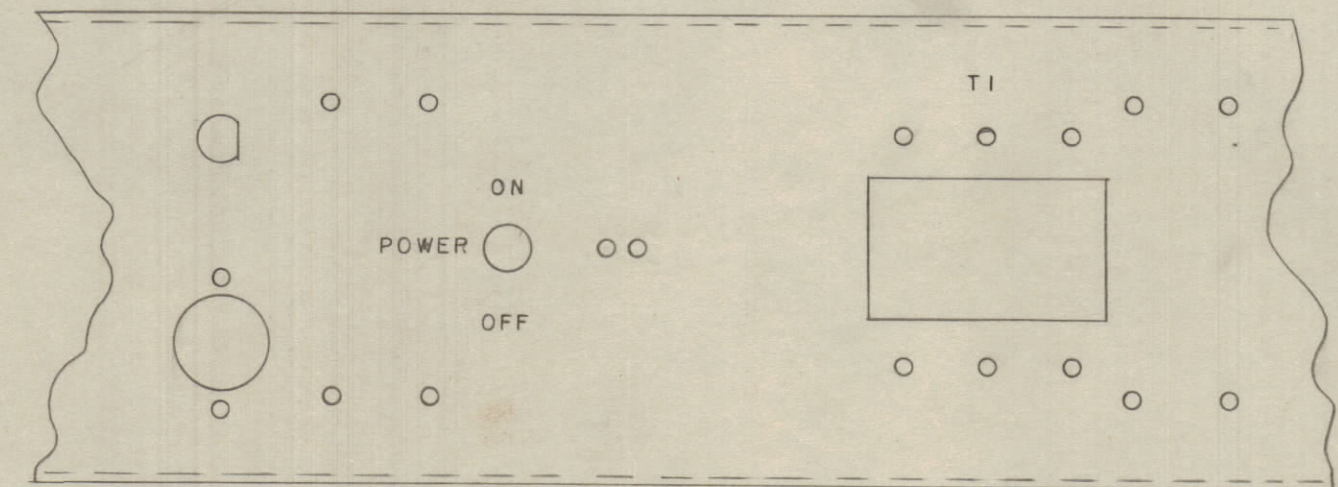


NOTE: STAMP JJ-104 ON SIDE OF J2 AND J3

WIRING DETAIL

REQ. ITEM	PART NO.	DESCRIPTION	SYMBOL
4	39	CU-139-2B FERRULE, HANDLE	
X	38	BS-100 SOLDER, SOFT	
1	37	CA-222 CABLE ASSY.	
X	36	PX-1049-03A INSULATION, SLEEVING VIO.	
X	35	PX-104-7-034 " " " GRAY	
X	34	WL-100-7 WIRE, BUSS BAR 22 GA.	
1	33	FU-100-1.0 FUSE 1A F1	
1	32	FH-100-2 HOLDER, FUSE	
1	31	JJ-100 RECEPTACLE, MALE	P1
1	30	WA-100 RING, LOCKING	
1	29	LWES0LRN WASHER, LOCK	
2	28	LWEO4MRN " " "	
2	27	SCBP0440B4 SCREW, MACHINE	
4	26	LWEL0LRN WASHER, LOCK	
4	25	SM-114 NUT, HEX	
4	24	MS-145 LOCK LINK	
4	23	SM-113 NUT, LOCK	
4	22	SCBP032BN2 SCREW, MACHINE	
2	21	SFB0265N3 SCREW, THD. CUTTING	
1	20	NP-154 NAME PLATE	
4	19	LWGL0MRN WASHER, LOCK	
4	18	SCHH032BN0 SCREW, MACHINE	
2	17	HA-102-2BN HANDLE	
2	16	JJ-104 CONNECTOR, MULTI COAX.	H42
8	15	PM-187 SPACER	
1	14	PM-185 CENTER BRACE	
1	13	TE-104-2 TERMINAL, LOCKING	
2	12	A-884 PAN ASSY	
14	11	SCBP0632BN6 SCREW, MACHINE	
1	10	ST-22K SWITCH, TOGGLE	S1
3	9	LWEO6MRN WASHER, LOCK	
29	8	SCBP0632BN5 SCREW, MACHINE	
1	7	MS-579 COVER, BOTTOM	
1	6	MS-198 " " TOP	
17	5	NTH0632BN8 NUT, HEX	
1	4	TF-153 TRANSFORMER, POWER	T1
11	3	SCFP0632BN6 SCREW, MACHINE	
1	2	MS-200 PANEL, FRONT	
1	1	MS-572 CHASSIS FRAME	

A-854 C



STAMP BACK OF CHASSIS AS ABOVE 1/8 HIGH GOTHIC.
 T1, ON, OFF, POWER,

NOTE - FRONT PANEL SCREW HEADS TO BE COATED WITH S-115 SMOOTH GRAY ENAMEL.

NOTICE TO PERSONS RECEIVING THIS DRAWING
 THE TECHNICAL MATERIEL CORPORATION claims proprietary right in the material disclosed hereon. This drawing is issued in confidence for engineering information only and may not be reproduced or used to manufacture anything shown hereon without permission from THE TECHNICAL MATERIEL CORPORATION to the user. This drawing is loaned for mutual assistance and is subject to recall at any time.

Property of:
 THE TECHNICAL MATERIEL CORPORATION
 MAMARONECK, NEW YORK

ISSUE	ITEM	CHANGED FROM	DATE	CH. NO.	DRAFTS	CHECKER	ENG. APP.
C	3	REVISED	2-7-53	0224			
	1	ITEM (2) WAS SC110-1, (3) ADDED					
	1	STARTING ADD'D REAR OF CHASSIS	5/1/50				
A	1	COMPLETE REVISION	8/8/50				

ALL DEC. DIM. ±
 OTHERS FRAC. DIM. ±
 ANGULAR DIM. ±

DRILL PUNCH, COMMERCIAL STOCK
 SIZES AND MANUFACTURERS
 TOLERANCES ARE NOT INCLUDED.

REQ. PER UNIT	MODEL	PROJECT NO.	ASSY. NO.	DATE
1	FFR-DPH			8-8-55

THE TECHNICAL MATERIEL CORP. MAMARONECK, NEW YORK			
STOCK SIZE			
MATERIAL WEIGHT PER PC.			
TYPE & TEMPER			
HEAT TREAT. SPEC.			
FINISH & SPEC. NO.			
DRAWN		ELEC. DES. APP.	
CHECKED		MECH. DES. APP.	
		FINAL APPROVAL	
		A-854 C	