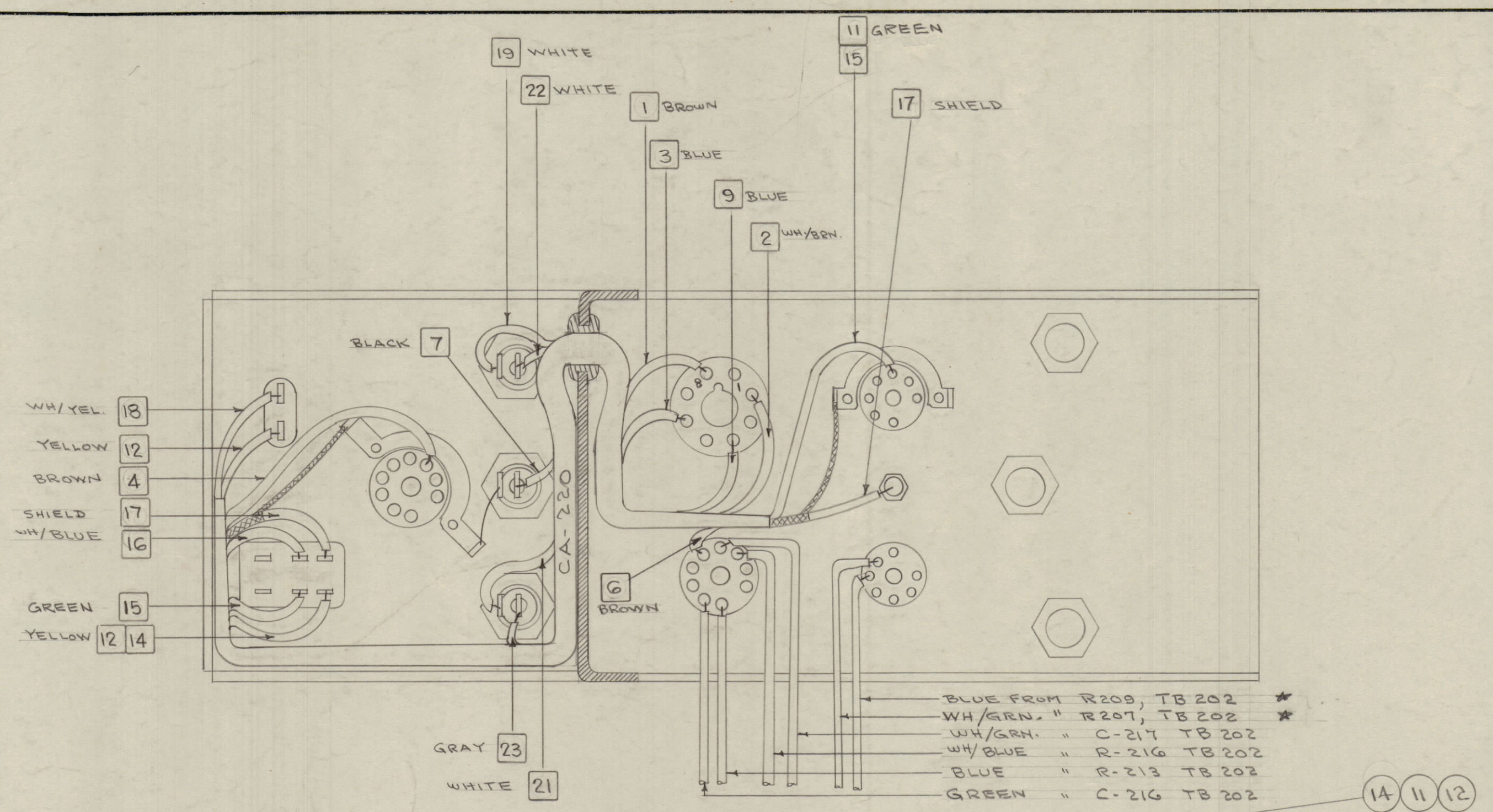
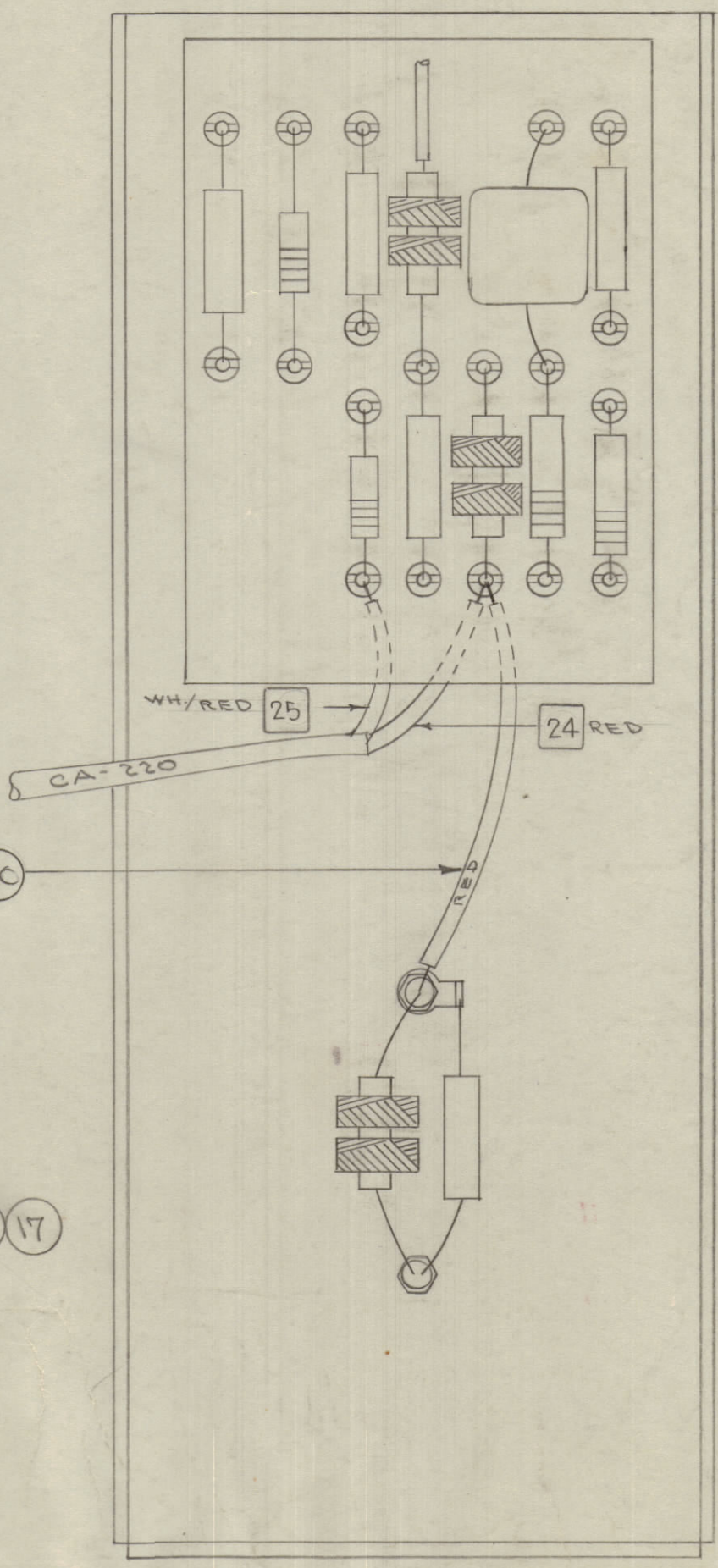
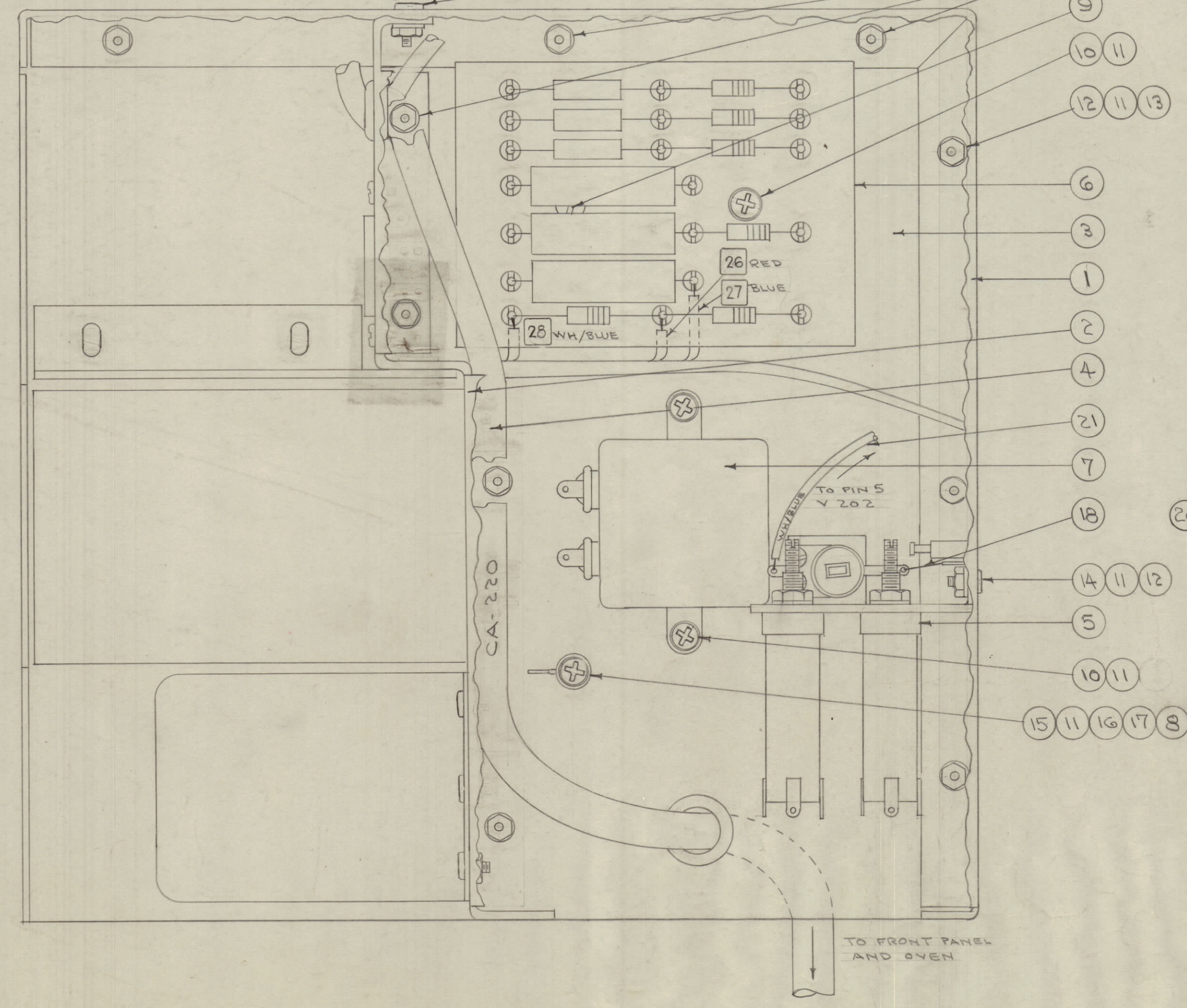
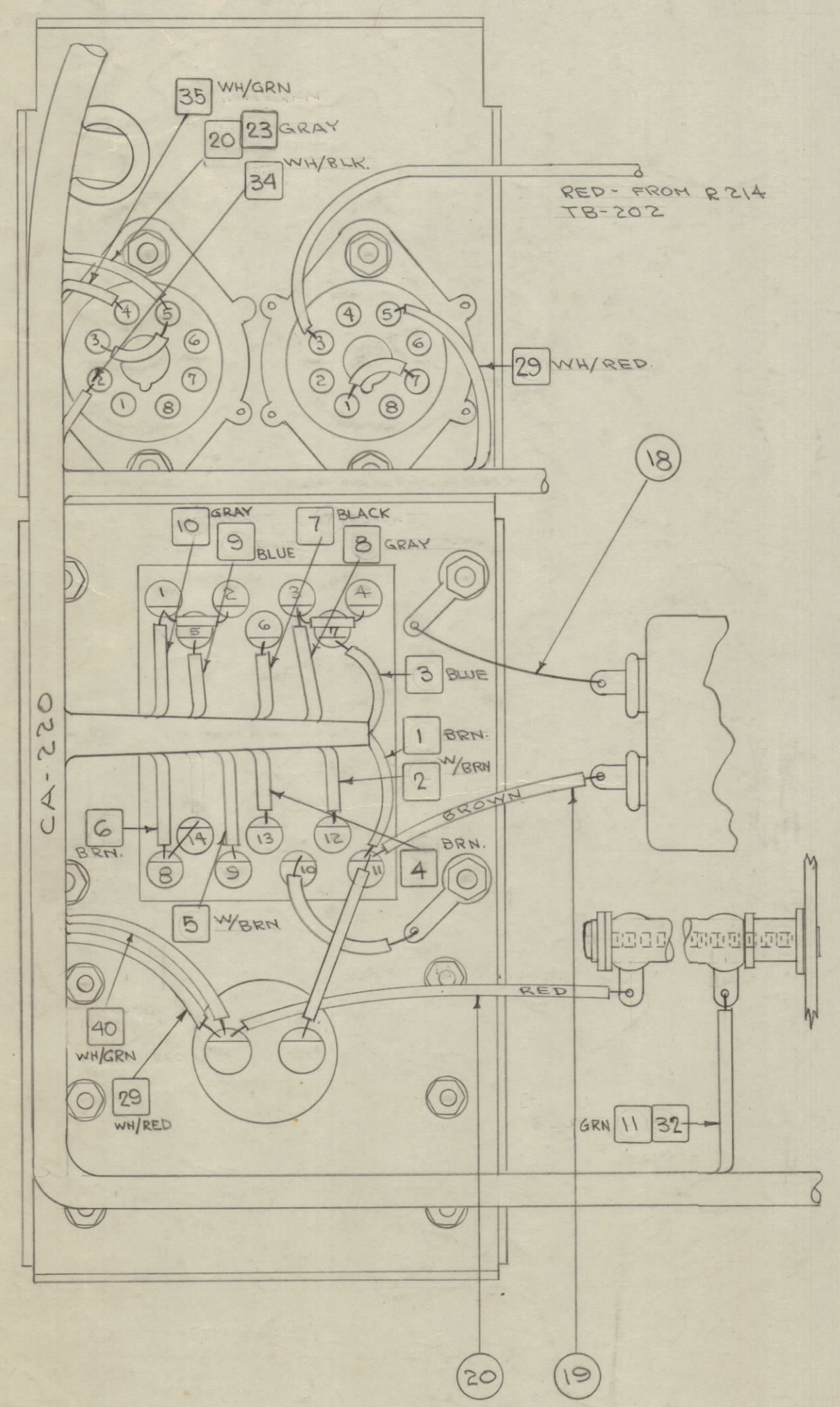


IF IT IS FOUND DESIRABLE TO CHANGE ANY TOLERANCE OR OTHER DETAIL SPECIFIED ON THIS DRAWING NOTIFY THE PURCHASER PROMPTLY.
 MAXIMUM ALLOWABLE TOLERANCES HAVE BEEN DETERMINED AND DEVIATIONS WILL BE CAUSE FOR REJECTION. REMOVE ALL BURRS AND SHARP EDGES



WIRE NUMBERS SHOWN CORRESPOND TO THOSE ON CABLE DWG. NO. CA-220.
 THIS DWG. SHOWS ONLY PARTS NECESSARY TO SHOW CABLE & TERMINAL BOARD CONNECTIONS.
 LIPS HAVE BEEN CUT AWAY OR OMITTED TO SHOW DETAILS.



NOTICE TO PERSONS RECEIVING THIS DRAWING
 THE TECHNICAL MATERIEL CORPORATION claims proprietary right in the material disclosed hereon. This drawing is issued in confidence for engineering information only and may not be reproduced or used to manufacture anything shown herein without permission from THE TECHNICAL MATERIEL CORPORATION to the user. This drawing is loaned for mutual assistance and is subject to recall at any time.
 Property of:
 THE TECHNICAL MATERIEL CORPORATION
 MAMARONECK, NEW YORK

REQ. ITEM	PART NO.	DESCRIPTION	SYMBOL
X 22	BS-100	SOLDER, SOFT	
X 21	MWC22(7)U96	WIRE, ELECTRICAL (WH/BLU)	
X 20	" U2	" " (RED)	
X 19	" U1	" " (BRN.)	
X 18	WL-100-7	WIRE, BUSS BAR (22 GA.)	
2 17	WA-102-4	WASHER, FIBER	
1 16	FW06HBN	" " FLAT	
1 15	SCRPO632BN36	SCREW, MACHINE	
4 14	SCRPO632BN4	" " "	
10 13	MTH0632BN10	NUT, HEX	
14 12	SCRPO632BN4	SCREW, MACHINE	
18 11	LWE06MRN	WASHER, LOCK	
3 10	SCRPO632BN6	SCREW, MACHINE	
1 9	SCRPO632BN6	" " "	
1 8	RW-109-32	RESISTOR, FIXED	R-101
1 7	CPS38EF205K1	CAPACITOR, "	C-101
1 6	A-818	TERM. BD. ASSY. (TB-202)	
1 5	A-819	COIL BRACKET ASSY.	
1 4	CA-220	CABLE ASSY.	
1 3	A-801	SIDE ASSY., P.S.	
1 2	A-814	P.S. CHASSIS SUB ASSY.	
1 1	A-815	MAIN CH. HDWE & COMP. ASSY.	

ISSUE	ITEM	CHANGED FROM	DATE	CN. NO.	DRAFTS	CHECKER	ENG. APP.
D		IT WAS CPS38EF205V	9-20-54	16810	WVW		
C	1	SM CHIT UPDATED	9-26-54	16810	WVW		
B	2	WIRE IDENTIFICATION CLARIFIED	9-23-54	9069	WVW		
A	1	* LEADS RELOCATED	4-27-54	1	WVW		

MODEL	PROJECT NO.	ASSY. NO.	DATE
PMO-2	285	U/O AB08	9-15-54
PMO-1	285	U/O AB08	9-15-54

THE TECHNICAL MATERIEL CORP. MAMARONECK, NEW YORK		
STOCK SIZE	CHASSIS/CABLE ASSY	
MATERIAL	P.M.O.	
TYPE & TEMPER	CD9/15/54	
HEAT TREAT SPEC.	CHECKED	FINAL APPROVAL
FINISH & SPEC. NO.	A-822 D	

A-822 D