

IF IT IS FOUND DESIRABLE TO CHANGE ANY TOLERANCE OR OTHER DETAIL SPECIFIED ON THIS DRAWING NOTIFY THE PURCHASER PROMPTLY.

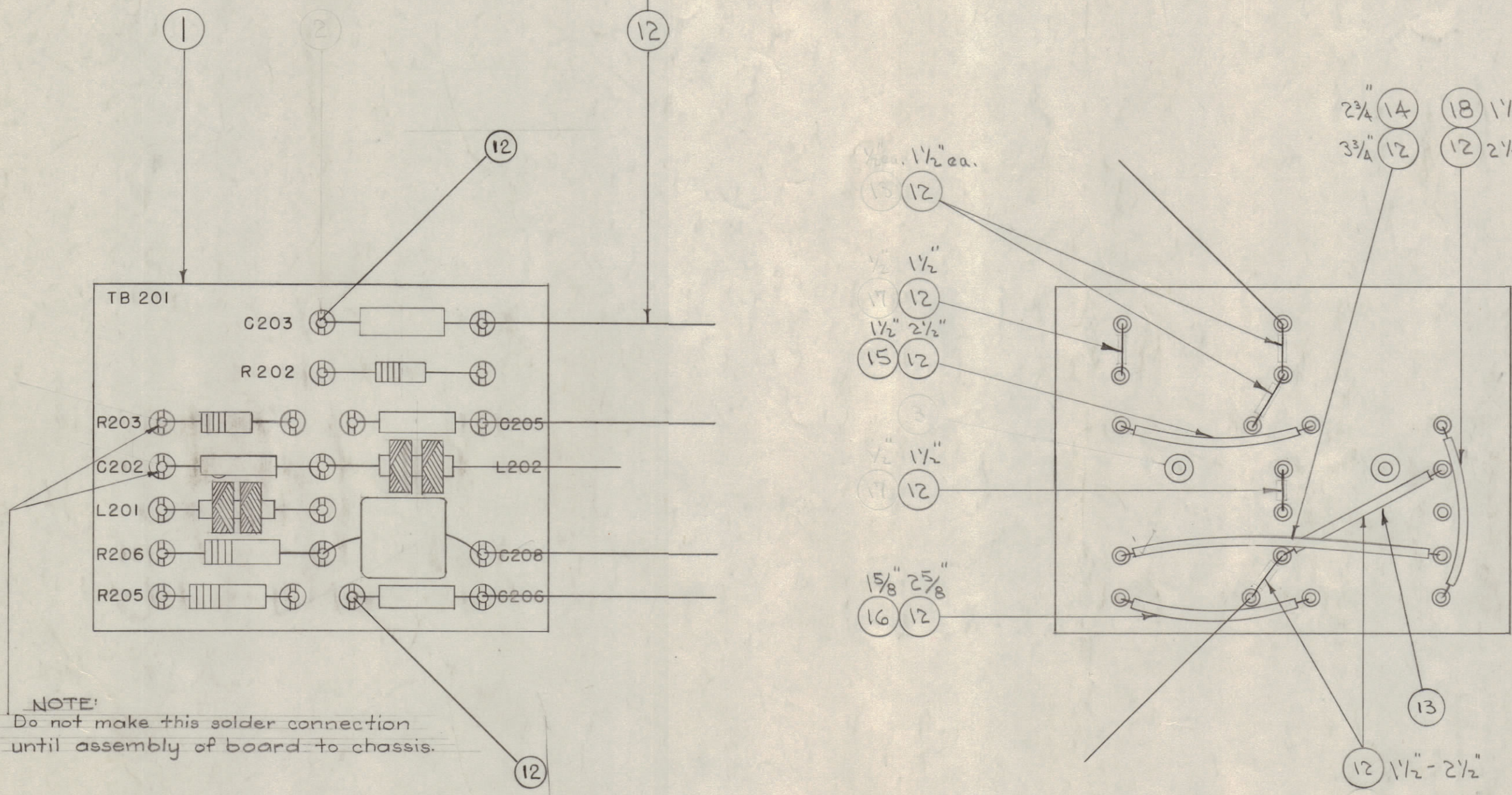
MAXIMUM ALLOWABLE TOLERANCES HAVE BEEN DETERMINED AND DEVIATIONS WILL BE CAUSE FOR REJECTION. REMOVE ALL BURRS AND SHARP EDGES

NOTICE TO PERSONS RECEIVING THIS DRAWING

THE TECHNICAL MATERIEL CORPORATION claims proprietary right in the material disclosed hereon. This drawing is issued in confidence for engineering information only and may not be reproduced or used to manufacture anything shown hereon without permission from THE TECHNICAL MATERIEL CORPORATION to the user. This drawing is loaned for mutual assistance and is subject to recall at any time.

Property of:
THE TECHNICAL MATERIEL CORPORATION
MAMARONECK, NEW YORK

ALL UNSHIELDED LEADS
5" EACH LEAD.



NOTE:
Do not make this solder connection until assembly of board to chassis.

A-816 F

X	19	BS-100	SOLDER, SOFT	
1/2"	18	PX-10A-6-034	INSULATION, SLEEVING (BLUE)	
	17		DELETED	
1 5/8"	16	PX-10A-4-034	" " (GRN.)	
1 1/2"	15	PX-10A-3-034	" " (RED)	
2 3/4"	14	PX-10A-2-034	" " (YEL)	
3"	13	PX-10A-1-034	" " (BLK)	
5/2 7/8"	12	WL-100-7	WIRE, BUSS BAR 22 GA.	
1	11	RC30GF471J	RESISTOR, FIXED	R206
1	10	RC30GF562J	" " "	R205
1	9	RC20GF563J	" " "	R203
1	8	RC20GF151J	" " "	R202
2	7	CL-100-5	CHOKE	L201 L202
1	6	CM35F103F03	CAPACITOR, FIXED	C208
1	5	CM35F103F03	" " "	C203
3	4	CM20F102G03	" " "	C205 C206
	3		DELETED	
19	2			
1	1	A-1536	TERM. BD. RF (TB-201)	

F	B/U UPDATED	9.20.66	16870	wjw	9/2	AKK
E	1 INBUILD-UP ITEMS 13,14,15,16 #18-034 WAS-022.	7-19-63	9544	AK	7/1	AKK
D	1 ITEM 2 WAS TE-108-3 DELETED FROM BUILD-UP	8-24-61	5493	E.H.	RU	SM
C	1 DELETED ITEM 17 PX-10A-5-022 INSULATION SLEEVING BEN	8/7/58	417	AKK	JAG	AKK
B	2 ITEM 2 WAS TE-109-3 1 ITEM 1 WAS PX-233	5/4/58	2	HSE	JAG	AKK
A	2 INSULATION REMOVED ON SHORT JUMPERS 1 ITEM 5 WAS CM30B102K	4-3-57	1	SC.	wjw	AJJ

ISSUE	ITEM	CHANGED FROM	DATE	CN. NO.	DRAFTS	CHECKER	ENG. APP.
TOLERANCES		SCALE: CP					
ALL OTHERS	DEC. DIM. ± FRAC. DIM. ± ANGULAR DIM. ±	DRILL, PUNCH, COMMERCIAL STOCK SIZES AND MANUFACTURERS TOLERANCES ARE NOT INCLUDED.					

1	PMO-2	285	A-815	9-8-54
1	PMO-1	285	A-815	9-8-54
REP. UNIT	MODEL	PROJECT NO.	ASSY. NO.	DATE
USED ON				

REQ. ITEM	PART NO.	DESCRIPTION	SYMBOL
THE TECHNICAL MATERIEL CORP. MAMARONECK, NEW YORK			
STOCK SIZE			
TERMINAL BOARD ASSY.			
MATERIAL	WEIGHT PER PC.	TB-201	PMO
TYPE & TEMPER		C.D.D. 9-8-54	WOC
		DRAWN	ELEC. DES. APP. MECH. DES. APP.
HEAT TREAT. SPEC.		WOC	WOC
		CHECKED	FINAL APPROVAL
			A-816 F
FINISH & SPEC. NO.			