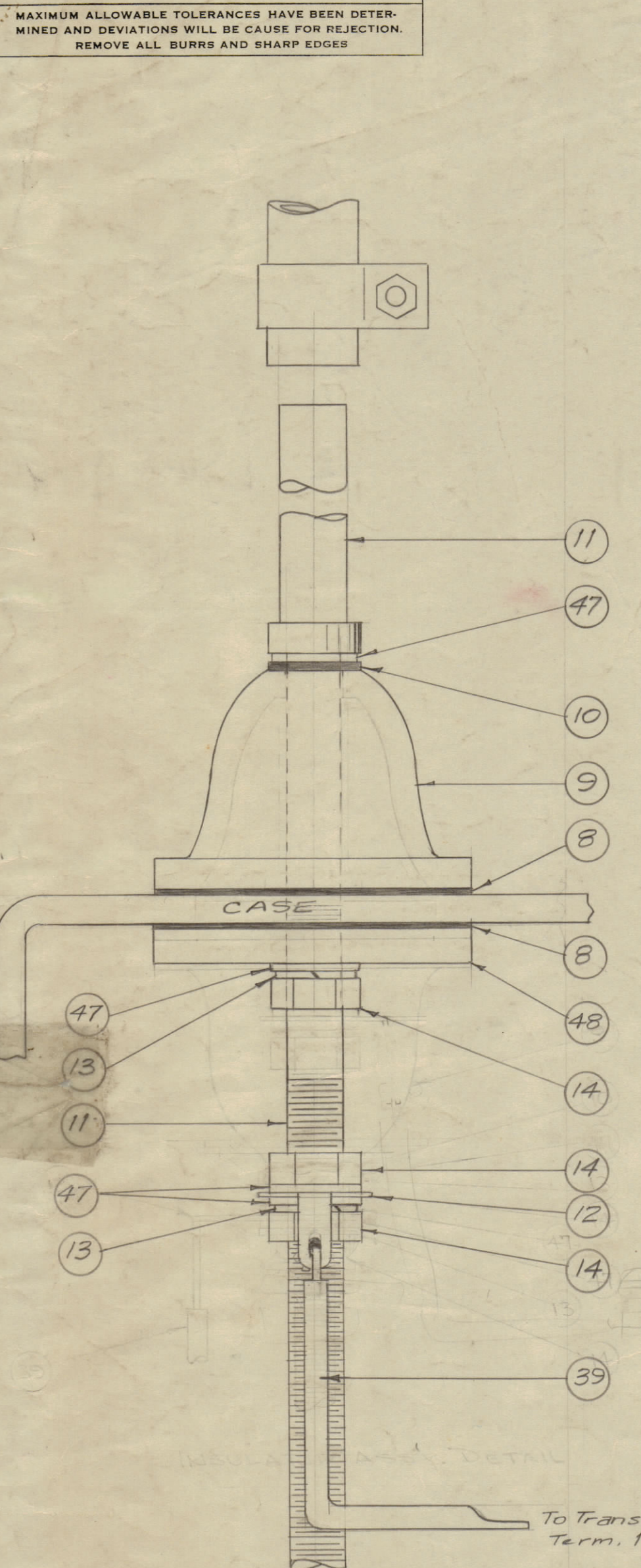


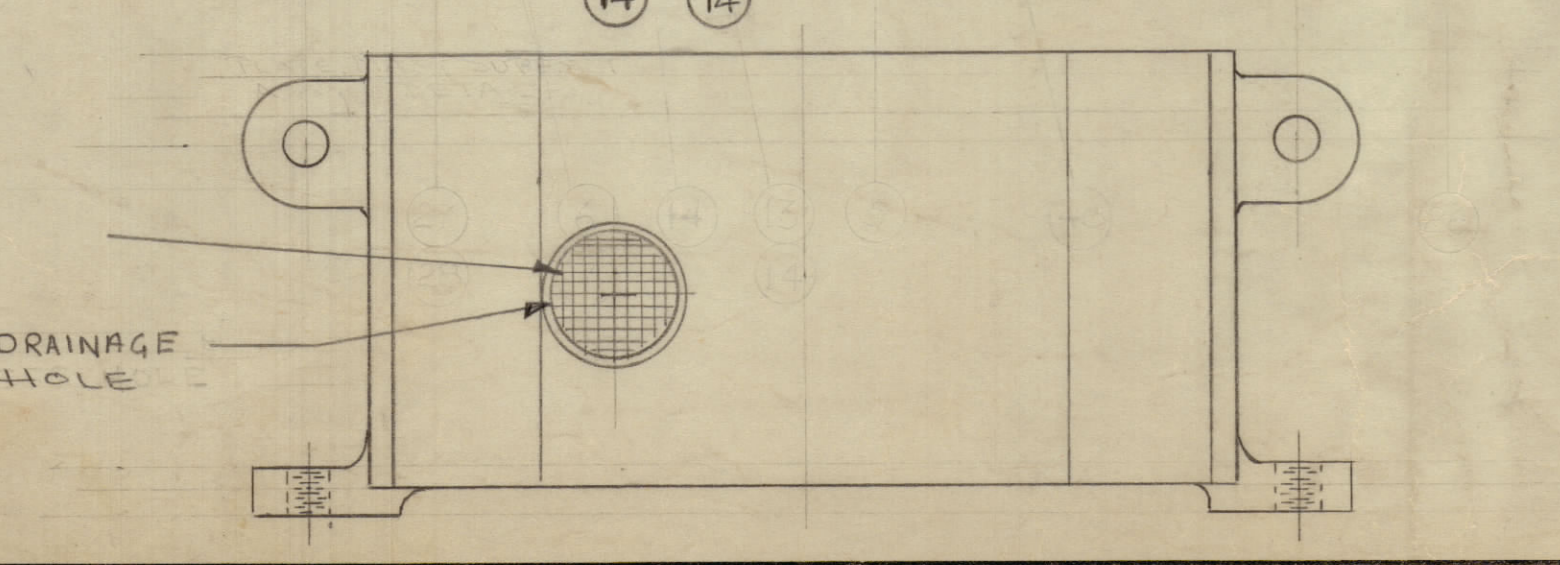
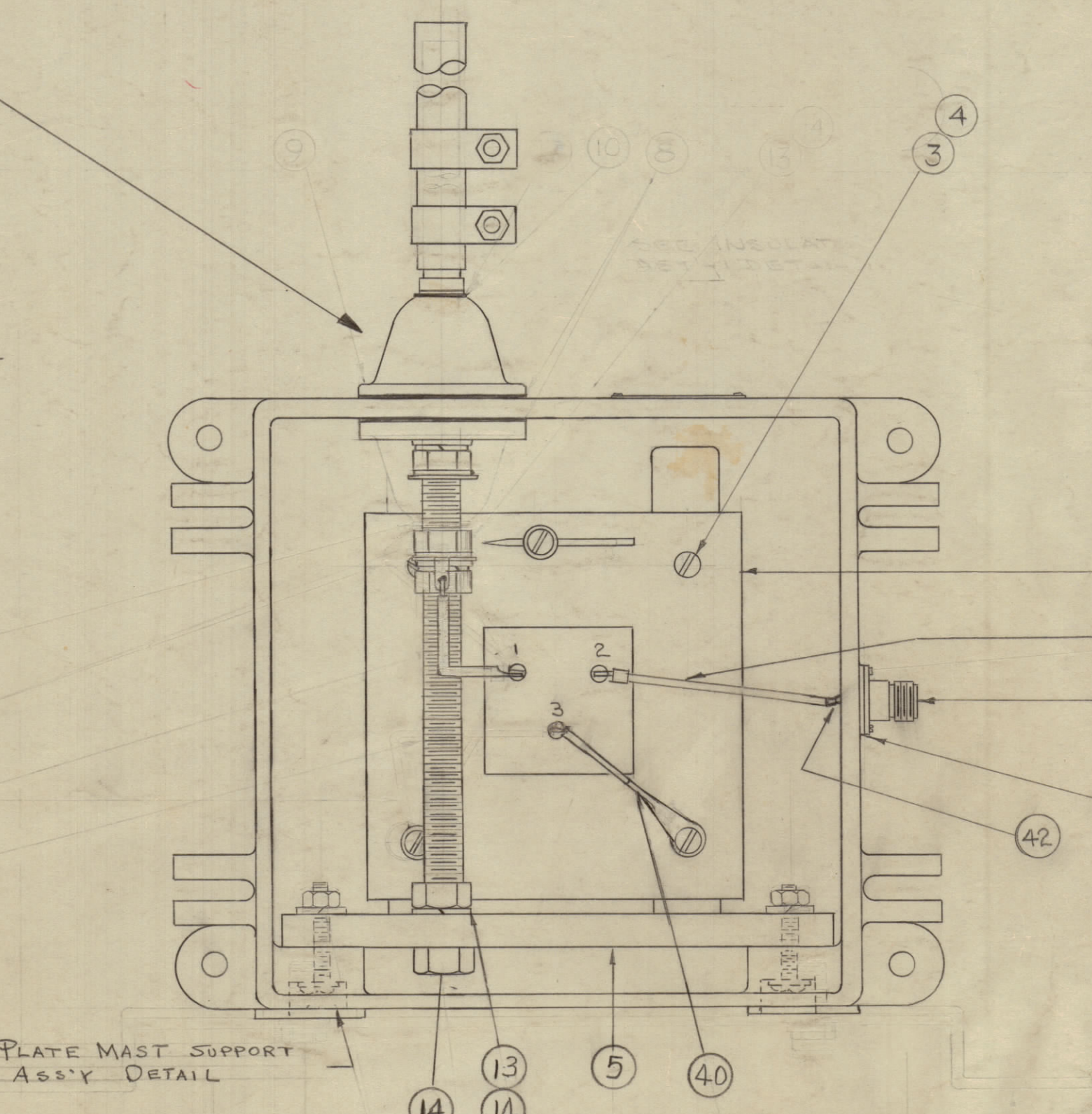
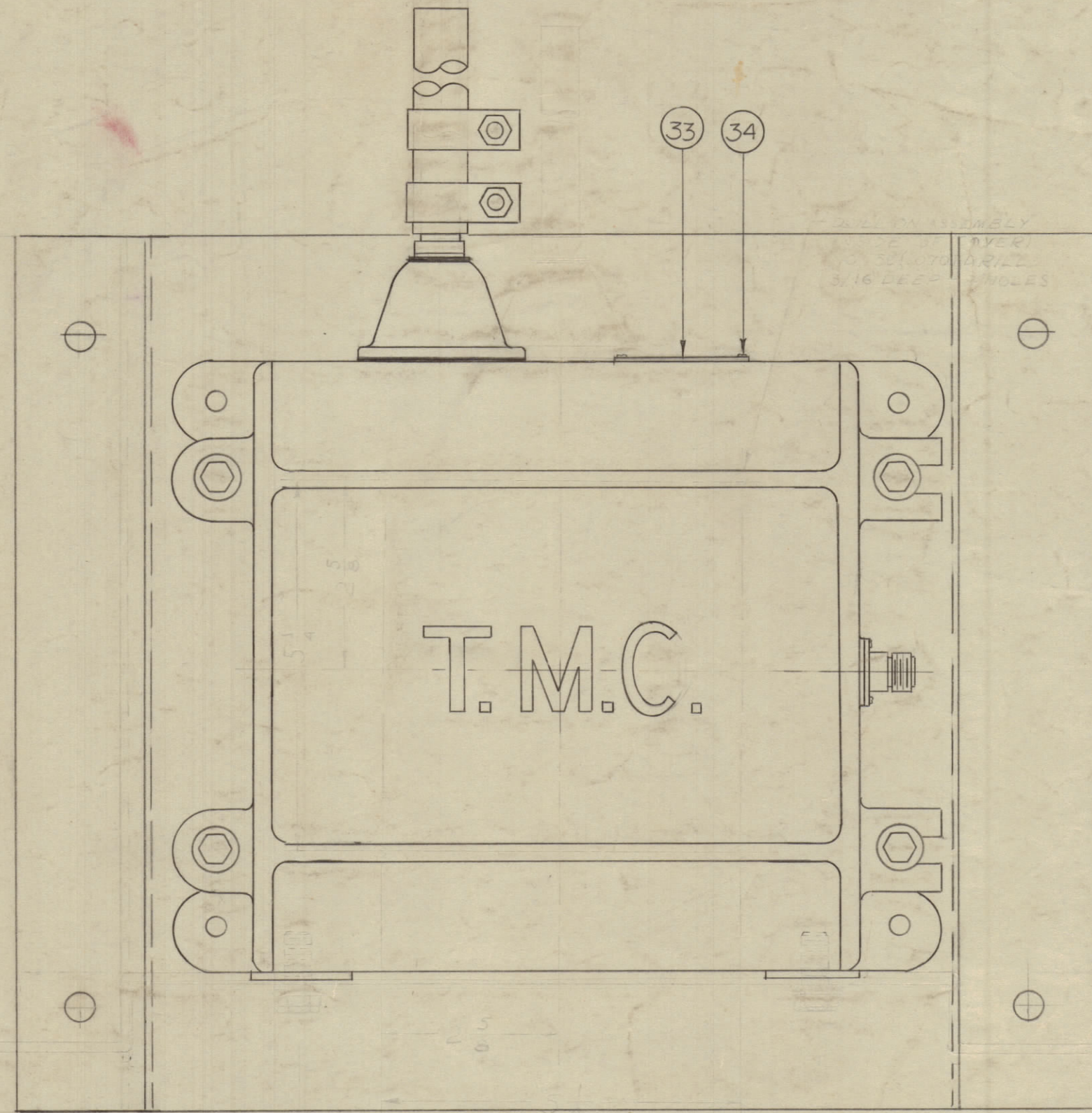
IF IT IS FOUND DESIRABLE TO CHANGE ANY TOLERANCE OR OTHER DETAIL SPECIFIED ON THIS DRAWING NOTIFY THE PURCHASER PROMPTLY.
 MAXIMUM ALLOWABLE TOLERANCES HAVE BEEN DETERMINED AND DEVIATIONS WILL BE CAUSE FOR REJECTION. REMOVE ALL BURRS AND SHARP EDGES.



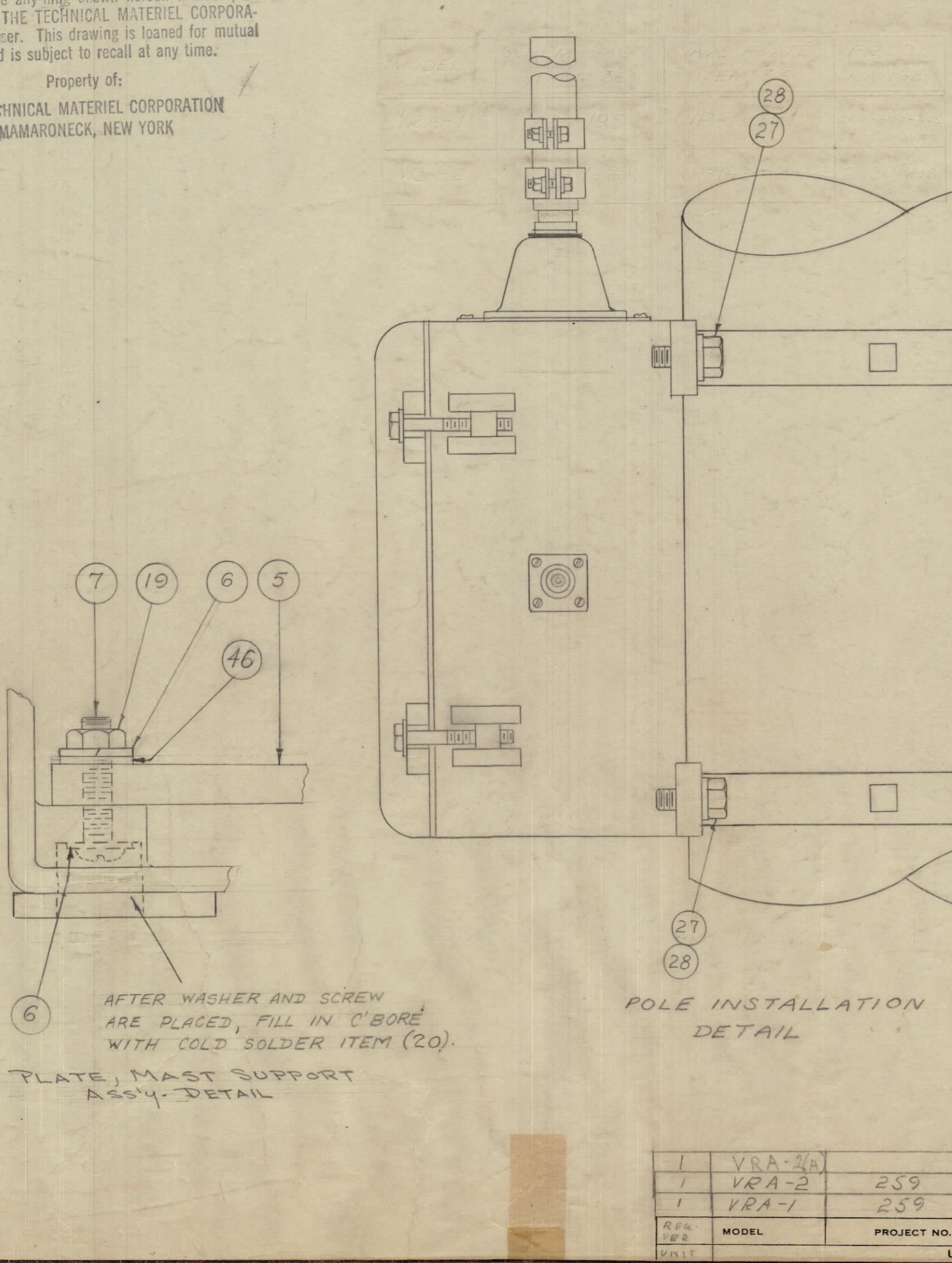
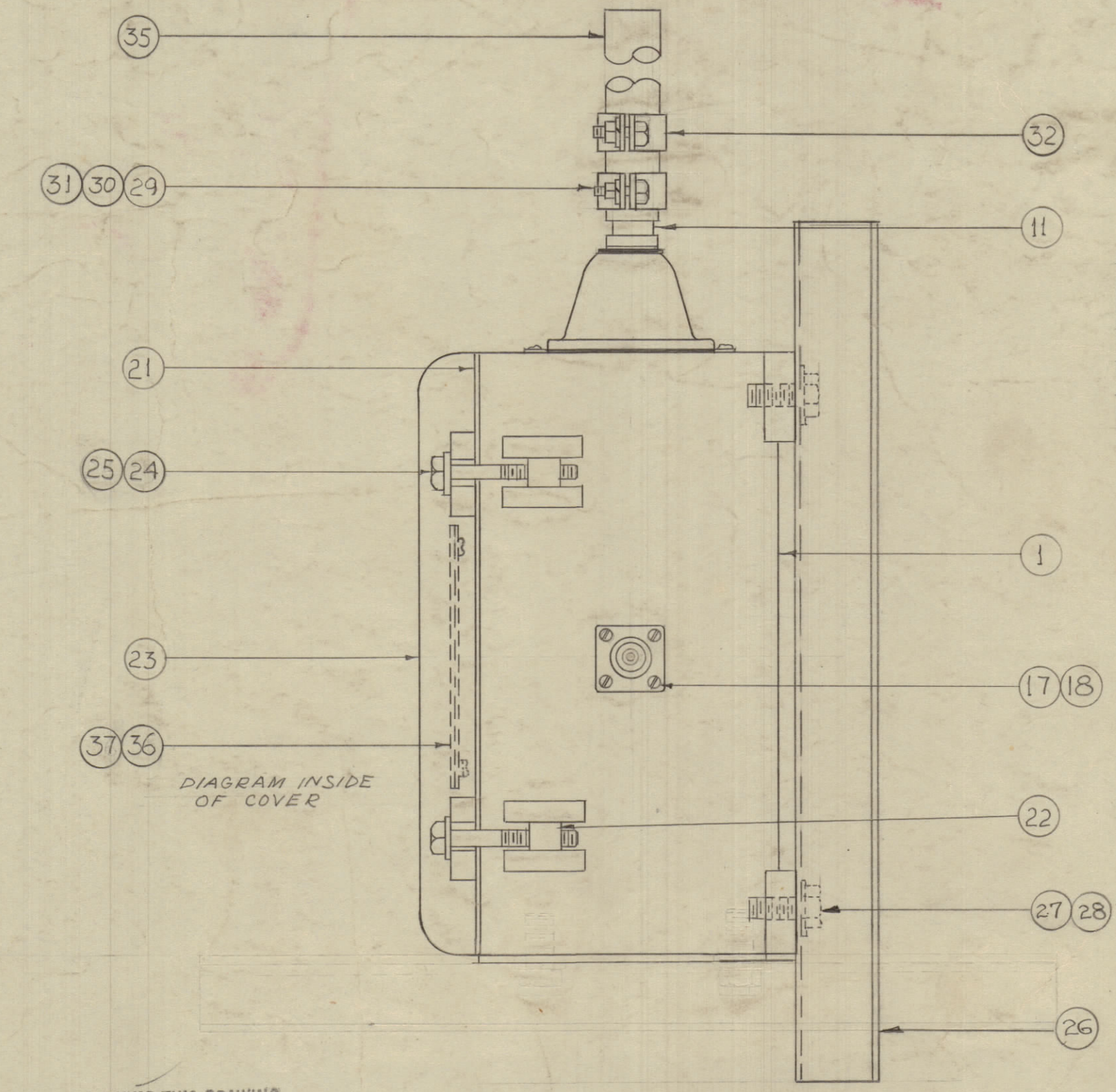
INSULATOR & MAST SUPPORT ASS'Y. DETAIL

ISSUE	ITEM	CHANGED FROM	DATE	CH. NO.	DRAFTS	CHECKER	ENG. APP.
L	2	ITEM 7 WAS SCBS1032 B028	5/22/51	10	JHU	WCS	
L	1	ALL CADMIUM HARDWARE CHANGED TO BRASS	11/3/50	10	JHU	WCS	
K	1	ITEM 48 ADDED					
J	7	ADDED PICTORIAL OF DRAINAGE HOLE					
J	6	INSULATOR ASSY DETAIL REDRAWN & REVISED					
J	5	ITEM 48 ADDED					
J	4	ITEM 47 WAS 3 REQ.	5/26/50	9	JHU	WCS	
J	3	ITEM 11 WAS A-797					
J	2	ITEM 10 WAS 2 REQ.					
J	1	ITEM 9 WAS 2 REQ.					
H	3	TRANSFORMER REQUESTED					
H	2	INSUL. ASSY DETAIL ADDED					
H	1	A-935 (Item 20) Replaced by MS-545	7/26/51	8	JHU	WCS	
G	1	ITEM 46 ADDED	12/15/50	7	JHU	WCS	
F	1	ITEMS 27, 28 WERE ADDED	7/15/50	6	JHU	WCS	
F	1	ITEM 40 WAS A-891	7/15/50	5	JHU	WCS	
D	1	INFO. ADDED TO CHART - ITEM 45	1/15/50	4	JHU	WCS	
C	5	ITEM 25 WAS AW-100-3					
C	4	ITEM 19 WAS DELETED					
C	3	ITEM 20 "					
C	2	ITEM 7 WAS SCBS1032 B028	1/10/50	3	JHU	WCS	
C	1	ITEM 6 WAS 4 REQ.					
B	4	ITEM 28 WAS SCH3716SN16	2/15/50	2	JHU	WCS	
B	3	ITEM 23 WAS MS-105					
B	2	ITEMS 43, 44 ADDED					
B	1	POLE INSTAL. DET. ADDED					
A	2	ITEMS 39-42 ADDED	1/14/50	1	JHU	WCS	
A	1	ITEMS 19-20 DELETED					

TOLERANCES	SCALE:
ALL DEC. DIM. ±	DRILL, PUNCH, COMMERCIAL STOCK
OTHERS FRAC. DIM. ±	SIZES AND MANUFACTURERS
ANGULAR DIM. ±	TOLERANCES ARE NOT INCLUDED.



NOTICE TO PERSONS RECEIVING THIS DRAWING
 THE TECHNICAL MATERIEL CORPORATION claims no copyright in the material disclosed herein. This drawing is issued in confidence for engineering information only and may not be reproduced or used by any manufacturer without the written permission of THE TECHNICAL MATERIEL CORPORATION to the effect. This drawing is loaned for mutual assistance and is subject to recall at any time.
 Property of:
 THE TECHNICAL MATERIEL CORPORATION
 MAMARONECK, NEW YORK



SUPPLIED AS LOOSE ITEMS

MODEL	PLUG ITEM 38	RT. ANGLE ADAPTER ITEM 45	RECEPTACLE ITEM 16	FREQUENCY RANGE	SCHEMATIC DIAGRAM ITEM 36	NAME PLATE ITEM 33
VRA-1	UG-21 B/U	UG-27A/U	UG-58A/U	200-800 KCS	LD-195	NP-143-1
VRA-2	UG-21 B/U	UG-27A/U	UG-58A/U	2-30 MCS	LD-196	NP-143-2
VRA-2A	PL-259	M-359	SO-249	2-30 MCS	LD-262	NP-143-3

NOTE:
 THE FOLLOWING SUPPLIED AS LOOSE ITEMS - 38, 43, 44 & 45

1	49	HB-111-1	BUTTON, PLUG
1	48	PX-412	INSULATOR, MAST SUPPORT
4	47	FW43LBN	FLAT, WASHER
4	46	FW10MBN	FLAT WASHER
1	45	SEE CHART	RT. ANGLE ADAPTER
16	44	SC-111-2	LAG BOLT
4	43	MS-619	BRACKET, MTG.
1	42	CU-101-1	FERRULE, INNER
1	41	A-916	CONNECTOR, COAXIAL
1	40	FP-144	CONNECTOR, GROUND
1	39	A-890	CONNECTOR, ANTENNA
1	38	SEE CHART	PLUG
1	37	PX-115	PLEXIGLASS GUARD
1	36	SEE CHART	SCHEMATIC DIAGRAM
1	35	PM-339	ANTENNA, WHIP
8	34	SC-102-1	SCREW, THREAD CUTTING
1	33	SEE CHART	NAME PLATE
2	32	MS-558	ANTENNA CLAMP
2	31	NTH2520BN12	HEX NUT
2	30	LWS25MRN	SPLIT WASHER
2	29	SCHH2520BN12	SCREW MACHINE
4	28	SCHH3716SN16	SCREW MACHINE
4	27	LW337MSH	SPLIT WASHER
1	26	MS-545	CASE SUPPORT
4	25	SC-108-9	BOLT, HEX
4	24	FW25MSS	WASHER, FLAT
1	23	PM-105	COVER
4	22	PM-100	PIN COVER BOLT
1	21	GA-103	GASKET, COVER
X	20	B5-105	GOLD, SOLDER
4	19	NTH1032BN12	NUT, HEX.
4	18	SCBS0440BN16	SCREW MACHINE
4	17	LWS04MRN	LOCK WASHER, SPLIT
1	16	SEE CHART	RECEPTACLE
1	15	GA-106	GASKET
4	14	NTH4320BN20	HEX NUT
3	13	LWS43MRN	LOCK WASHER, SPLIT
1	12	TE-129	TERMINAL LUG
1	11	PM-494	SUPPORT, MAST
1	10	GA-127	GASKET
1	9	NS-115	CAP INSULATOR
2	8	GA-126	GASKET
4	7	SCBS1032BN24	SCREW MACHINE
8	6	LWS10MRN	LOCK WASHER SPLIT
1	5	MS-547	PLATE MAST SUPPORT
4	4	SCBS0832BN16	SCREW MACHINE
4	3	LWE08MRN	WASHER, LOCK
1	2	A-809	TRANSFORMER SUB ASSY
1	1	A-798	CASE

MODEL	PROJECT NO.	ASSY. NO.	DATE
VRA-2A	259		2/27/56
VRA-2	259		8-17-54
VRA-1	259		8-27-54

REQ. ITEM	PART NO.	DESCRIPTION	SYMBOL
THE TECHNICAL MATERIEL CORP. MAMARONECK, NEW YORK			
FINAL ASSEMBLY			
VRA			
TYPE & TEMPER			
DRAWN			
ELEC. DES. APP.			
MECH. DES. APP.			
HEAT TREAT. SPEC.			
CHECKED			
FINAL APPROVAL			
FINISH & SPEC. NO.			

A-811