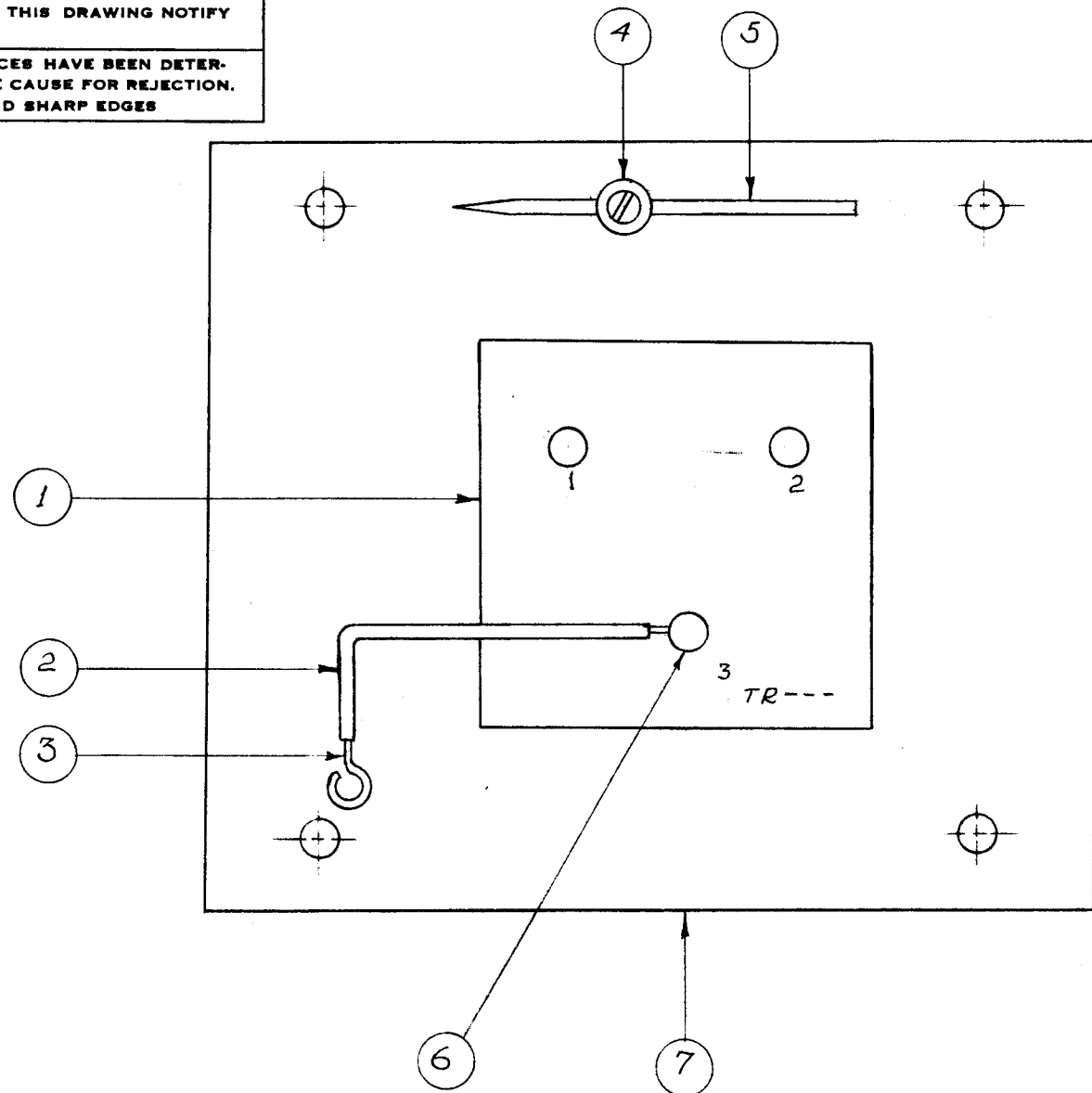
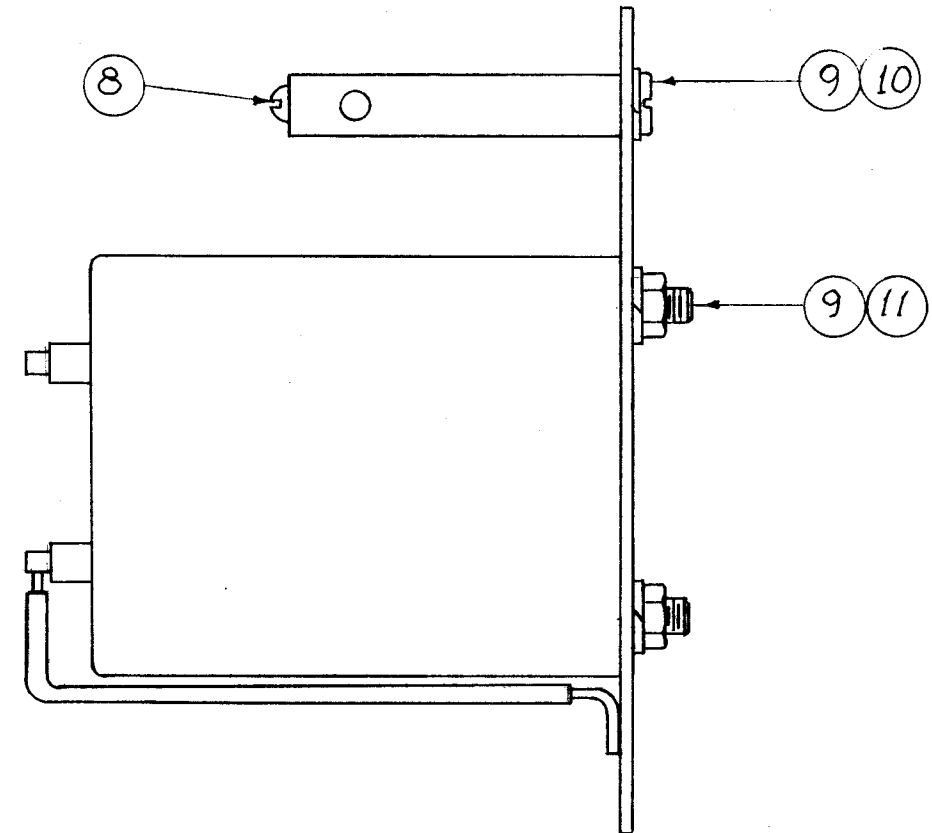


IF IT IS FOUND DESIRABLE TO CHANGE ANY TOLERANCE OR OTHER DETAIL SPECIFIED ON THIS DRAWING NOTIFY THE PURCHASER PROMPTLY.

MAXIMUM ALLOWABLE TOLERANCES HAVE BEEN DETERMINED AND DEVIATIONS WILL BE CAUSE FOR REJECTION. REMOVE ALL BURRS AND SHARP EDGES



A-809



NOTE: ITEM 1  
FOR VRA-1 USE TR-042  
" VRA-2 " TR-044  
" VRA-2A " TR-044

REQ.	ITEM	PART NO.	DESCRIPTION	SYMBOL
	4	11	NTH 0632 BCB	NUT, HEX
	1	10	SCBS 0632 BCB	SCREW, MACHINE
	5	9	LWE 06 MRC	WASHER, LOCK
	1	8	SCRS 0632 SN6	SCREW, MACHINE
	1	7	MS-546	MOUNTING PLATE
X	6	BS-100	SOLDER, SOFT	
	1	5	PM-103	SPARK ROD
	1	4	PM-102	POST
X	3	WL-100-3	WIRE, BUSS BAR	
X	2	PX-104-1-066	INSULATION, SLEEVING	
	1	1	SEE NOTE	TRANSFORMER

REQ.	ITEM	PART NO.	DESCRIPTION	SYMBOL
— # —			<b>THE TECHNICAL MATERIEL CORP.</b> MAMARONECK. NEW YORK <b>TRANSFORMER, SUB ASSY.</b>	
STOCK SIZE				
— # —				
MATERIAL WEIGHT PER PC.				
— # —			PD-2-25-54 ARB WJC DRAWN ELEC. DES. APP. MECH. DES. APP.	
TYPE & TEMPER			ARB	
— # —			AIDe CHECKED FINAL APPROVAL	
HEAT TREAT. SPEC.			A-809	
— # —			FINISH & SPEC. NO.	

ISSUE	ITEM	CHANGED FROM	DATE	CN. NO.	DRAFTS	CHECKER	ENG. APP.
	1	VRA-2A	2-28-56				
	1	VRA-2	8-27-54	259			A-811
	1	VRA-1	8-25-54	259			A-811
ALL OTHERS							