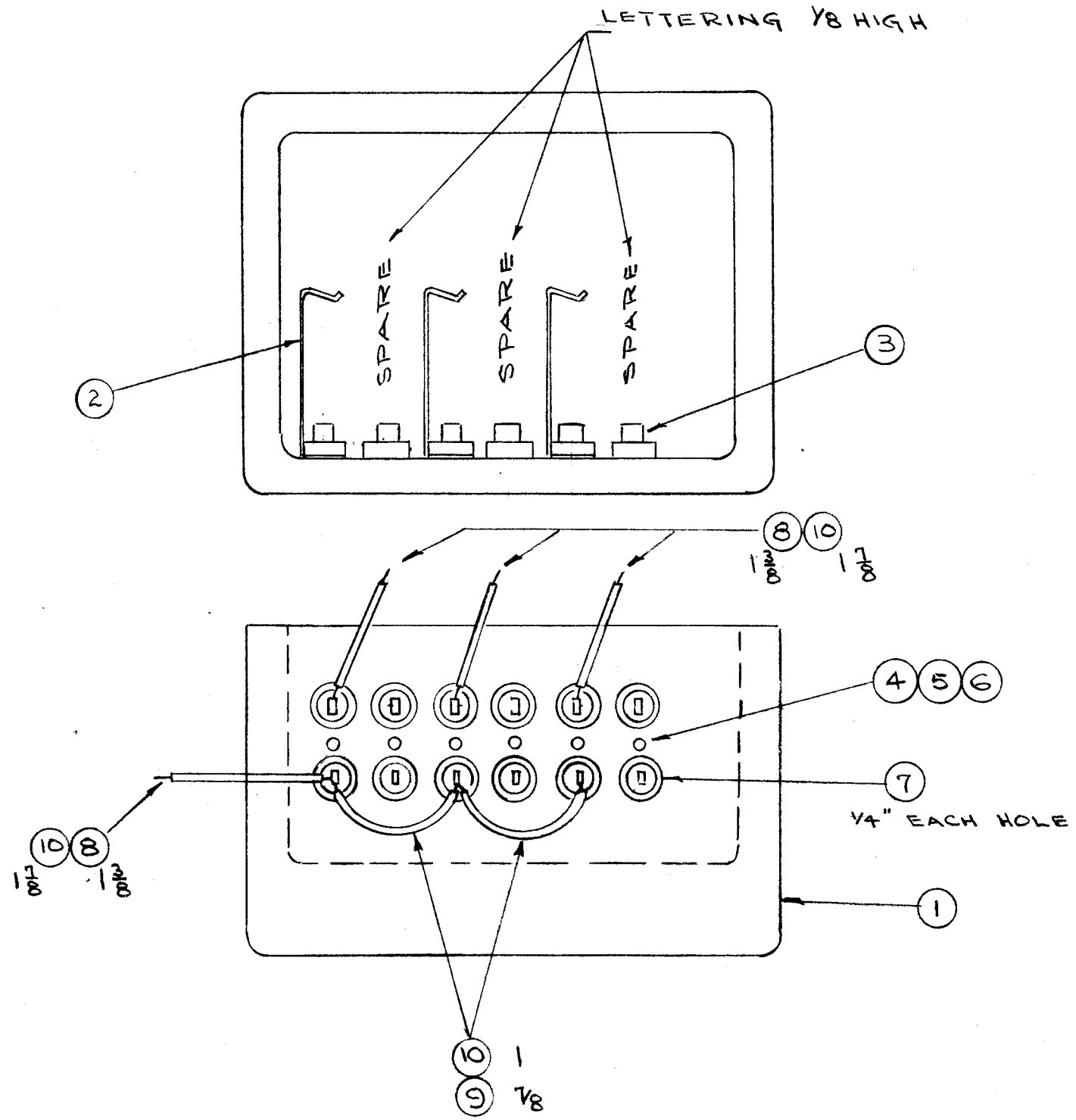


IF IT IS FOUND DESIRABLE TO CHANGE ANY TOLERANCE OR OTHER DETAIL SPECIFIED ON THIS DRAWING NOTIFY THE PURCHASER PROMPTLY.

MAXIMUM ALLOWABLE TOLERANCES HAVE BEEN DETERMINED AND DEVIATIONS WILL BE CAUSE FOR REJECTION. REMOVE ALL BURRS AND SHARP EDGES

A-795

LETTERING 1/8 HIGH



REQ.	ITEM	PART NO.	DESCRIPTION	SYMBOL
X	11	BS-100	SOLDER, SOFT	
X	10	WL-100-7	WIRE, BUSS BAR	
X	9	PX-104-4-.034	INSULATION, SLEEVING (GRN)	
5 1/2"	8	PX-104-2-.034	INSULATION, SLEEVING (YEL)	
3"	7	PX-104-5-.234	INSULATION, SLEEVING (BRN)	
6	6	SCBS0440BNG	SCREW, MACHINE	
6	5	LWS04MRC	LOCK WASHER, SPLIT	
6	4	WA-101-1	WASHER, FIBRE	
6	3	TS-104-1	SOCKET, XTAL	
3	2	FP-109	CLAMP, XTAL	
1	1	PM-295	MACHINING, XTAL OVEN	

STOCK SIZE	THE TECHNICAL MATERIEL CORP. MAMARONECK. NEW YORK		
MATERIAL	WEIGHT PER PC.	CRYSTAL, OVEN CORE SUB-ASSY	
TYPE & TEMPER	DRAWN: <i>HAQ 7-20-54</i> A. J. J. <i>WJ</i> ELEC. DES. APP. MECH. DES. APP.		
HEAT TREAT. SPEC.	CHECKED: <i>CD 7-20-54</i> A. J. J. FINAL APPROVAL		
FINISH & SPEC. NO.	A-795		

ISSUE	ITEM	CHANGED FROM	DATE	CN. NO.	DRAFTS	CHECKER	ENG. APP.
TOLERANCES		SCALE:					
ALL OTHERS	DEC. DIM. ± FRAC. DIM. ± ANGULAR DIM. ±	DRILL, PUNCH, COMMERCIAL STOCK SIZES AND MANUFACTURERS TOLERANCES ARE NOT INCLUDED.					

1	XFK-M1	309	A-800	7-20-54
MODEL	PROJECT NO.	ASS'Y. NO.	DATE	