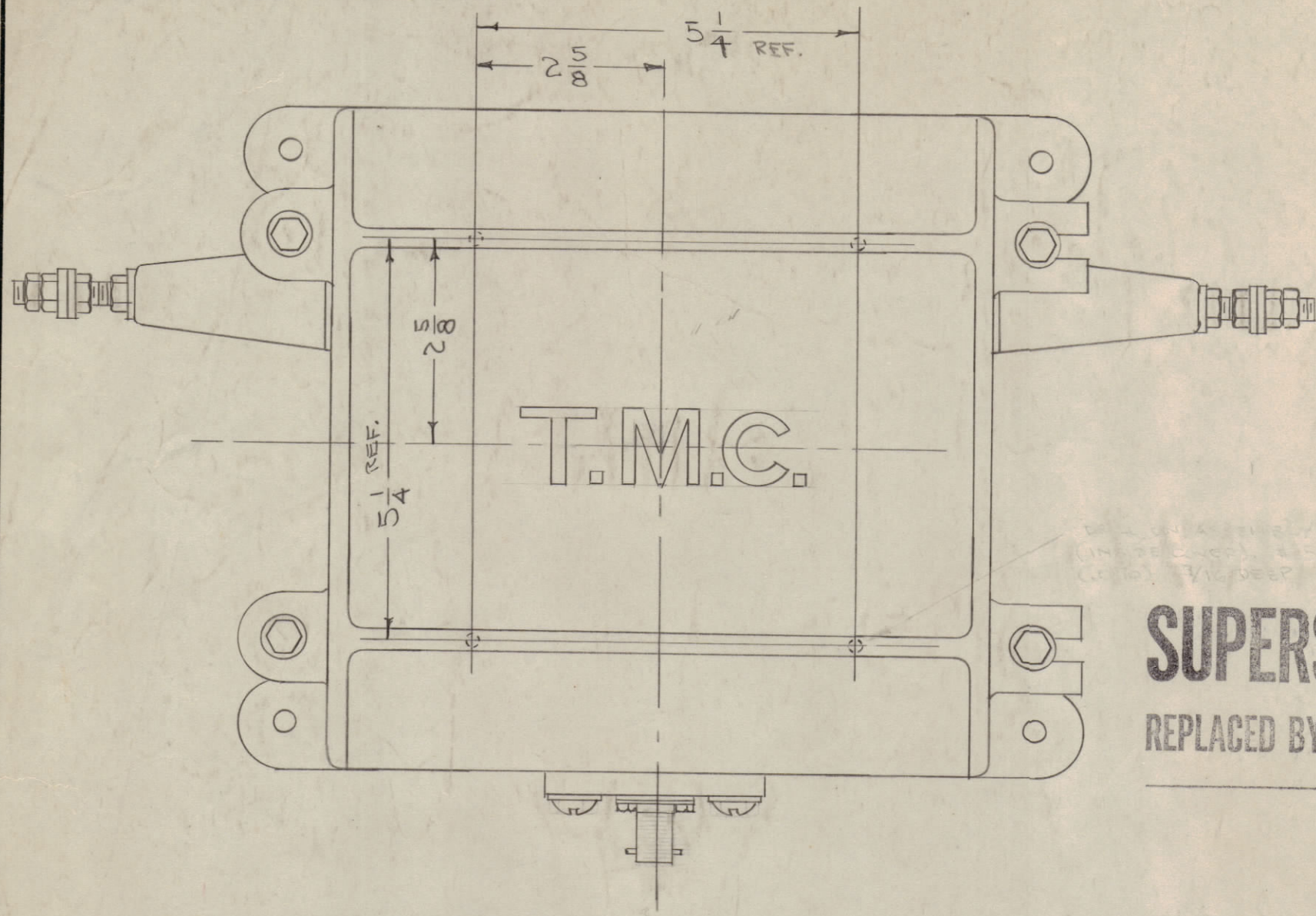
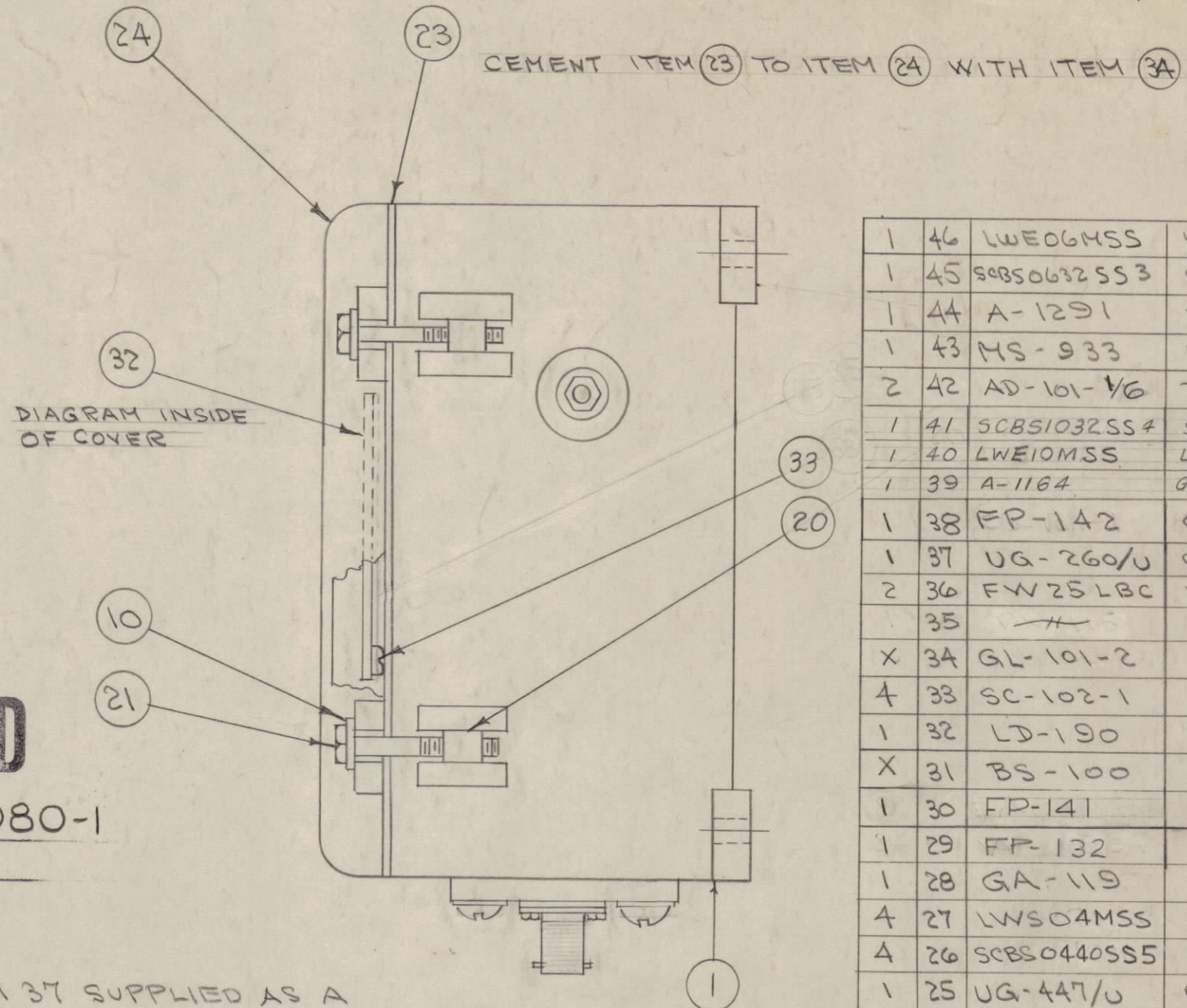


IF IT IS FOUND DESIRABLE TO CHANGE ANY TOLERANCE OR OTHER DETAIL SPECIFIED ON THIS DRAWING NOTIFY THE PURCHASER PROMPTLY.

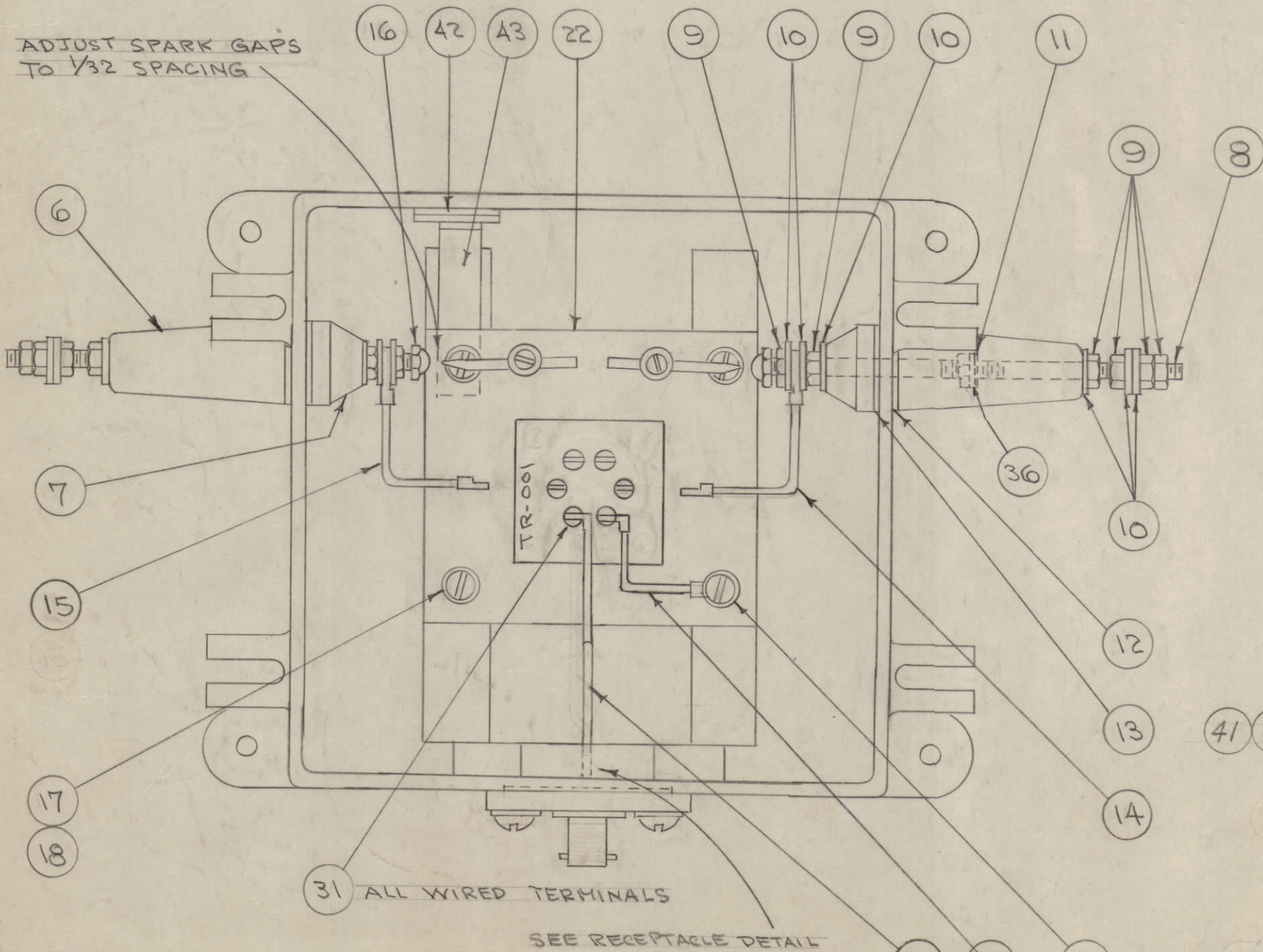
MAXIMUM ALLOWABLE TOLERANCES HAVE BEEN DETERMINED AND DEVIATIONS WILL BE CAUSE FOR REJECTION. REMOVE ALL BURRS AND SHARP EDGES



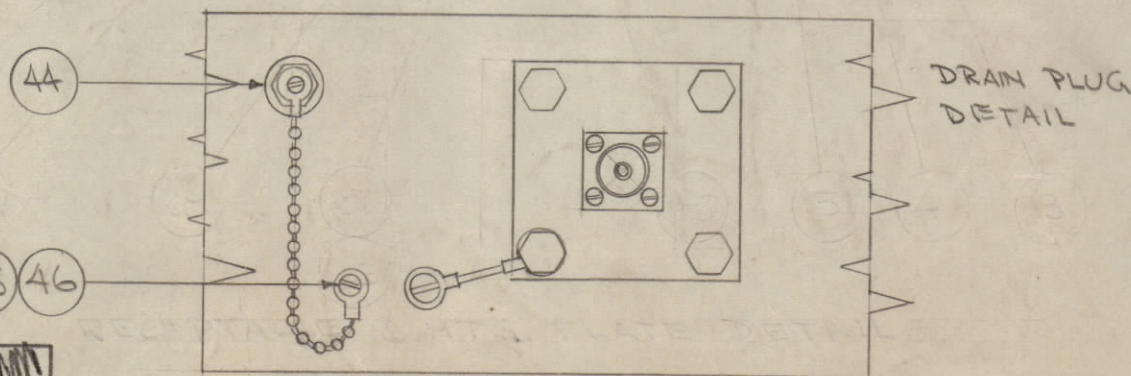
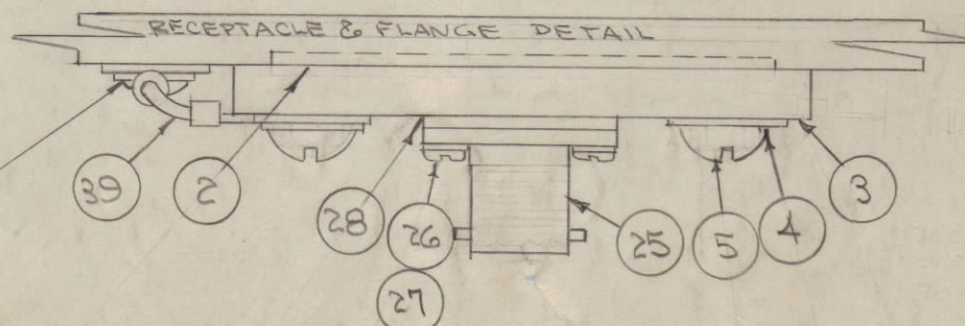
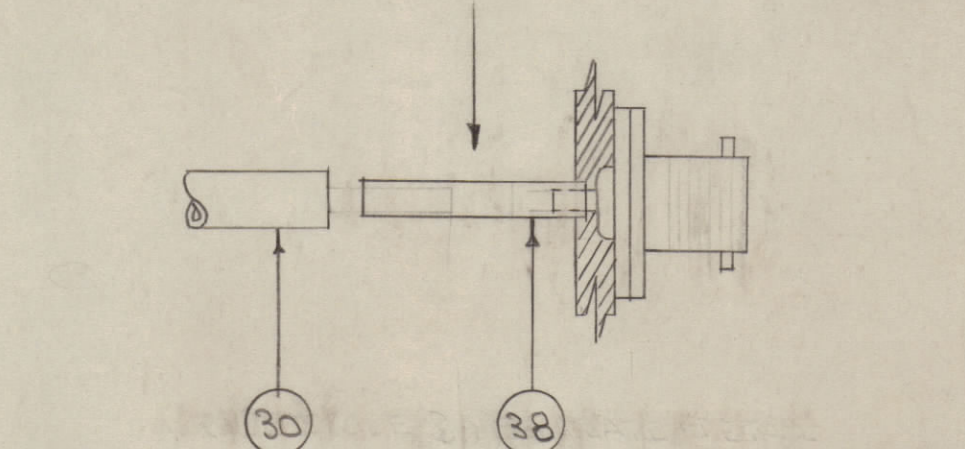
SUPERSEDED
REPLACED BY A-3080-1



NOTE:
ITEM 37 SUPPLIED AS A
LOOSE ITEM INSIDE CASE.



NOTE: SLIP ITEM 38 OVER TIP OF JACK AS SHOWN & SOLDER.
SLIP ITEM 30 OVER EXTENSION, CRIMP AND SOLDER.



1	46	LWE06MSS	WASHER, LOCK
1	45	SCBS0632SS3	SCREW, MACHINE
1	44	A-1291	DRAIN PLUG ASSY.
1	43	MS-933	HOLDER, DESSICANT
2	42	AD-101-1/8	DESSICANT
1	41	SCBS1032SS4	SCREW, MACHINE
1	40	LWE10MSS	LOCKWASHER, EXT
1	39	A-1164	GROUND STRAP, CASE
1	38	FP-142	CONNECTOR EXTENSION
1	37	UG-260/U	CONNECTOR, PLUG
2	36	FW25LBC	WASHER, FLAT
	35	-	DELETED
X	34	GL-101-2	CEMENT, FLIOBOND
4	33	SC-102-1	SCREW, THD. CUTTING
1	32	LD-190	SCHEMATIC DIAGRAM
X	31	BS-100	SOLDER, SOFT
1	30	FP-141	CONNECTOR, COAX
1	29	FP-132	CONNECTOR, GROUND
1	28	GA-119	GASKET
4	27	LWS04MSS	WASHER, LOCK
4	26	SCBS0440SS5	SCREW, MACHINE
1	25	UG-447/U	RECEPTACLE
1	24	PM-105	COVER
1	23	GA-103	GASKET, COVER
1	22	A-105	TRANSFORMER SUBASSY.

A-745 H

4	21	SC-108-9	BOLT, HEX
4	20	PM-100	PIN, COVER BOLT
1	19	FW08MBC	WASHER, FLAT
4	18	LWE08MRC	WASHER, LOCK
4	17	SCBS0832BC6	SCREW, MACHINE
2	16	NTC2520BCL	NUT, CAP
1	15	A-849	CONNECTOR, LEFT INSULATOR
1	14	A-848	" , RIGHT "
2	13	GA-101	GASKET
2	12	GA-100	"
2	11	GA-104	"
20	10	FW25MSS	WASHER, FLAT
12	9	NTH2520SS14	SCREW, MACHINE
2	8	A-100	STUD, SUB ASSY.
2	7	NS-101	INSULATOR, INSIDE
2	6	NS-100	" , OUTSIDE
4	5	SCR32520SS12	SCREW, MACHINE
4	4	LWS25MSS	WASHER, LOCK
1	3	PM-293	PLATE, MOUNTING
1	2	GA-102	GASKET
1	1	PM-106	CASE

REQ.	ITEM	PART NO.	DESCRIPTION	SYMBOL
#				
STOCK SIZE				
# #				
MATERIAL WEIGHT PER PC.				
#				
TYPE & TEMPER				
#				
HEAT TREAT. SPEC.				
#				
FINISH & SPEC. NO.				

THE TECHNICAL MATERIEL CORP.
MAMARONECK, NEW YORK

CASE & COVER ASSEMBLY
RAC-10

CODE: 5-4-54
DRAWN: [Signature] ELEC. DES. APP. [Signature] MECH. DES. APP. [Signature]

CHECKED: [Signature] DATE: 5-4-54

FINAL APPROVAL: [Signature]

A-745 H

F	1	ITEM(30) WAS A-889	1-4-62	6146	56	[Signature]	[Signature]
E	1	FP-132 SUPERCEDES A-850	2-20-57	2	[Signature]	[Signature]	[Signature]
D	1	A2 Thru 46 Added	6/15/54	1	[Signature]	[Signature]	[Signature]
ISSUE	ITEM	CHANGED FROM	DATE	CN. NO.	DRAFTS	CHECKER	ENG. APP.
TOLERANCES							
SCALE:							
DRILL, PUNCH, COMMERCIAL STOCK SIZES AND MANUFACTURERS TOLERANCES ARE NOT INCLUDED.							

H	"SUPERSEDED" NOTE ADDED		6-9-64	11509	1st	[Signature]	[Signature]
G	ITEM 46 WAS LWE06MRC ITEM 41 WAS SCBS1032SS4, 45 WAS SCBS0632BC3 ITEM 35 DELETED WAS PM15, 40 WAS LWE10MRC ITEM 26 WAS SCBS0440SS5, 27 WAS LWS04MSS		8-17-62	7026	8	[Signature]	[Signature]
ISSUE	CHANGED FROM	DATE	CN. NO.	DRAFT	CHECK	ENG.	

RAC-10	296		5-4-54
MODEL	PROJECT NO.	ASS'Y. NO.	DATE
USED ON			