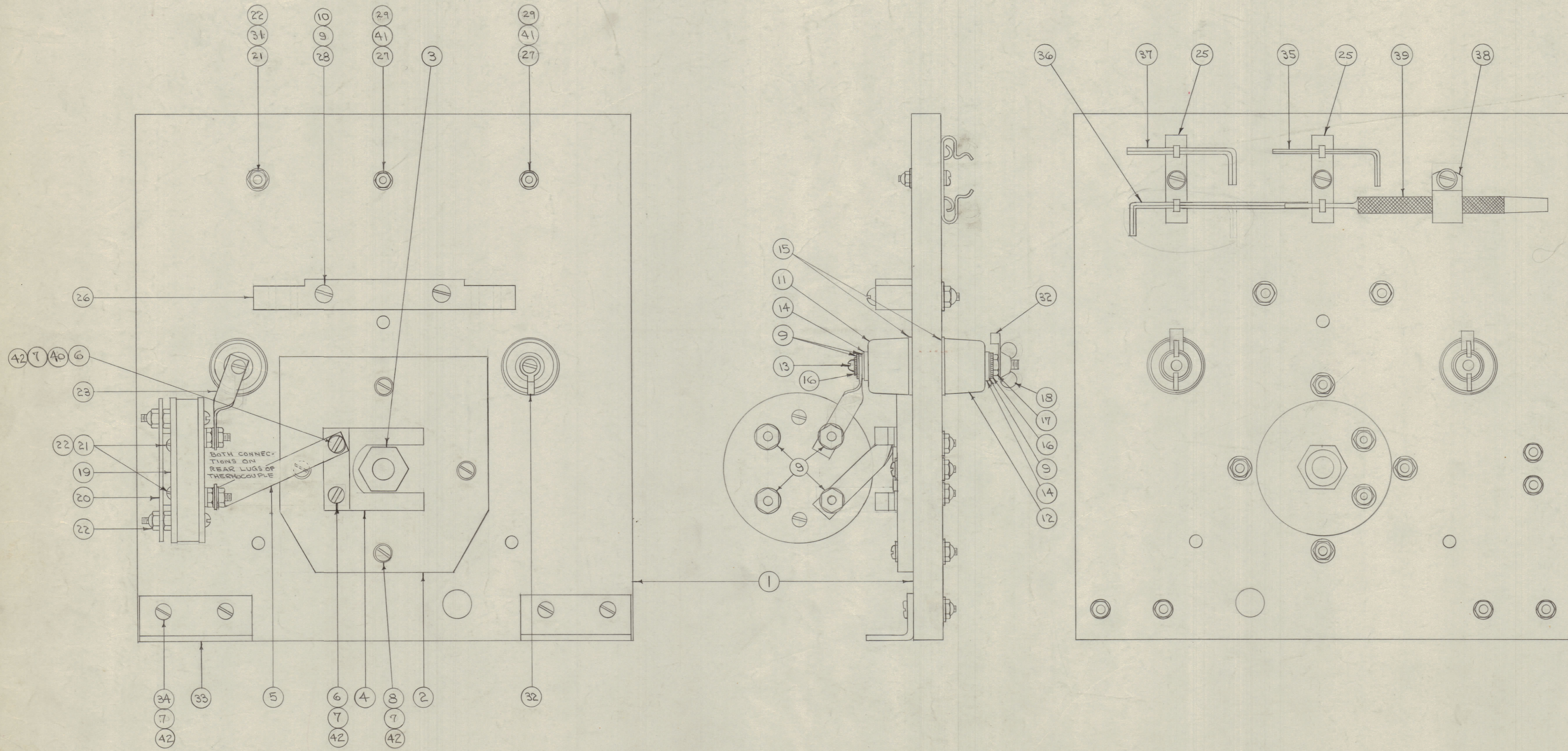


IF IT IS FOUND DESIRABLE TO CHANGE ANY TOLERANCE OR OTHER DETAIL SPECIFIED ON THIS DRAWING NOTIFY THE PURCHASER PROMPTLY.  
 MAXIMUM ALLOWABLE TOLERANCES HAVE BEEN DETERMINED AND DEVIATIONS WILL BE CAUSE FOR REJECTION. REMOVE ALL BURRS AND SHARP EDGES



14	42	FW02HRC	WASHER, FLAT
4	41	FW04HRC	WASHER, FLAT
1	40	LWE08MRC	WASHER, LOCK
1	39	TP-102	PUNCH, DRIVE PIN
1	38	CU-102-5	CLAMP, "G" TYPE
1	37	WR-100-5	WRENCH, HEX
1	36	WR-100-18	" " "
1	35	WR-100-3	" " "
4	34	SCRS0832BC14	SCREW, MACHINE
2	33	MS-A58	BRACKET

3	32	TE-1A1-3	TERMINAL
4	31	FW06HRC	WASHER, FLAT
4	30		DELETE
2	29	SM-127-D-440	NUT, LOCK
2	28	SCRS 1032BC22	SCREW, MACHINE
2	27	SCRS0440BC12	SCREW, MACHINE
1	26	PX-190	COND. MOUNT, REAR
2	25	CU-103-3	CLIP, SPRING
2	24		DELETED
1	23	MS-525-1	LINK, CONNECTING
3	22	SM-127-D-6-32	NUT, LOCK
3	21	SCRS0632BC14	SCREW, MACHINE
1	20	MS-A95	BRACKET, THERMOCOUPLE
1	19	MR-103-2	THERMOCOUPLE
2	18	NT-110-1032EN	NUT, WING
2	17	NTH1032BC12	NUT, HEX
4	16	LWE10MRC	WASHER, LOCK
4	15	GA-117	GASKET
4	14	WA-106-1	WASHER, ASBESTOS
2	13	SCRS1032BC44	SCREW, MACHINE
2	12	NS-108-2	INSULATOR
2	11	NS-108-1	" "
2	10	SM-127-D-10-32	NUT, LOCK
12	9	FW10HRC	WASHER, FLAT
4	8	SCRS0832BC16	SCREW, MACHINE
10	7	SM-127-D-8-32	NUT, LOCK
2	6	SCRS0832BC10	SCREW, MACHINE
1	5	MS-525-2	LINK, CONNECTING
1	4	MS-A57	SPRING CONTACT
1	3	PM-247	BUSHING
1	2	PX-229	SUPPORT, COUNTER SHAFT
1	1	PX-198	ELEMENT, REAR

**NOTICE TO PERSONS RECEIVING THIS DRAWING**

THE TECHNICAL MATERIEL CORPORATION claims proprietary right in the material disclosed hereon. This drawing is issued in confidence for engineering information only and may not be reproduced or used to manufacture anything shown hereon without permission from THE TECHNICAL MATERIEL CORPORATION to the user. This drawing is loaned for mutual assistance and is subject to recall at any time.

Property of  
 THE TECHNICAL MATERIEL CORPORATION  
 MAMARONECK, NEW YORK

6	ITEM 36 WAS WR-100-4				
5	ITEM 16 WAS NT-110-4				
4	ITEM A1 & A2 ADDED	4/10/57	3	16	JAD
3	ITEM 31 QUANT WAS 1				
2	ITEM 3 QUANT WAS 4				
1	ITEM 24 (LOW CARBON) DEL.				
5	ITEM 17 WAS APPROVED				
2	ITEM 3 WAS DELETED	11/23/54	2	10	WSP
1	ITEM 6 WAS DELETED				
2	ITEM 5 DELETED	7/25/54	1	C.D.D.	ANDR
1	ITEM 7 WAS REQ.				

ISSUE	ITEM	CHANGED FROM	DATE	CN. NO.	DRAFTS	CHECKER	ENG. APP.
ALL OTHERS							

DRILL, PUNCH, COMMERCIAL STOCK SIZES AND MANUFACTURERS TOLERANCES ARE NOT INCLUDED.

1	TAC-1	132	A-782	1-27-54
REQ. PER UNIT	MODEL	PROJECT NO.	ASS'Y. NO.	DATE

REQ. ITEM	PART NO.	DESCRIPTION	SYMBOL
THE TECHNICAL MATERIEL CORP. MAMARONECK, NEW YORK			
REAR ELEMENT ASSY.			
TAC-1			
DRAWN: C.D.D. 1/1/54			
ELEC. DES. APP.:			
MECH. DES. APP.:			
HEAT TREAT. SPEC.:			
CHECKED:			
FINAL APPROVAL:			
FINISH & SPEC. NO.:			