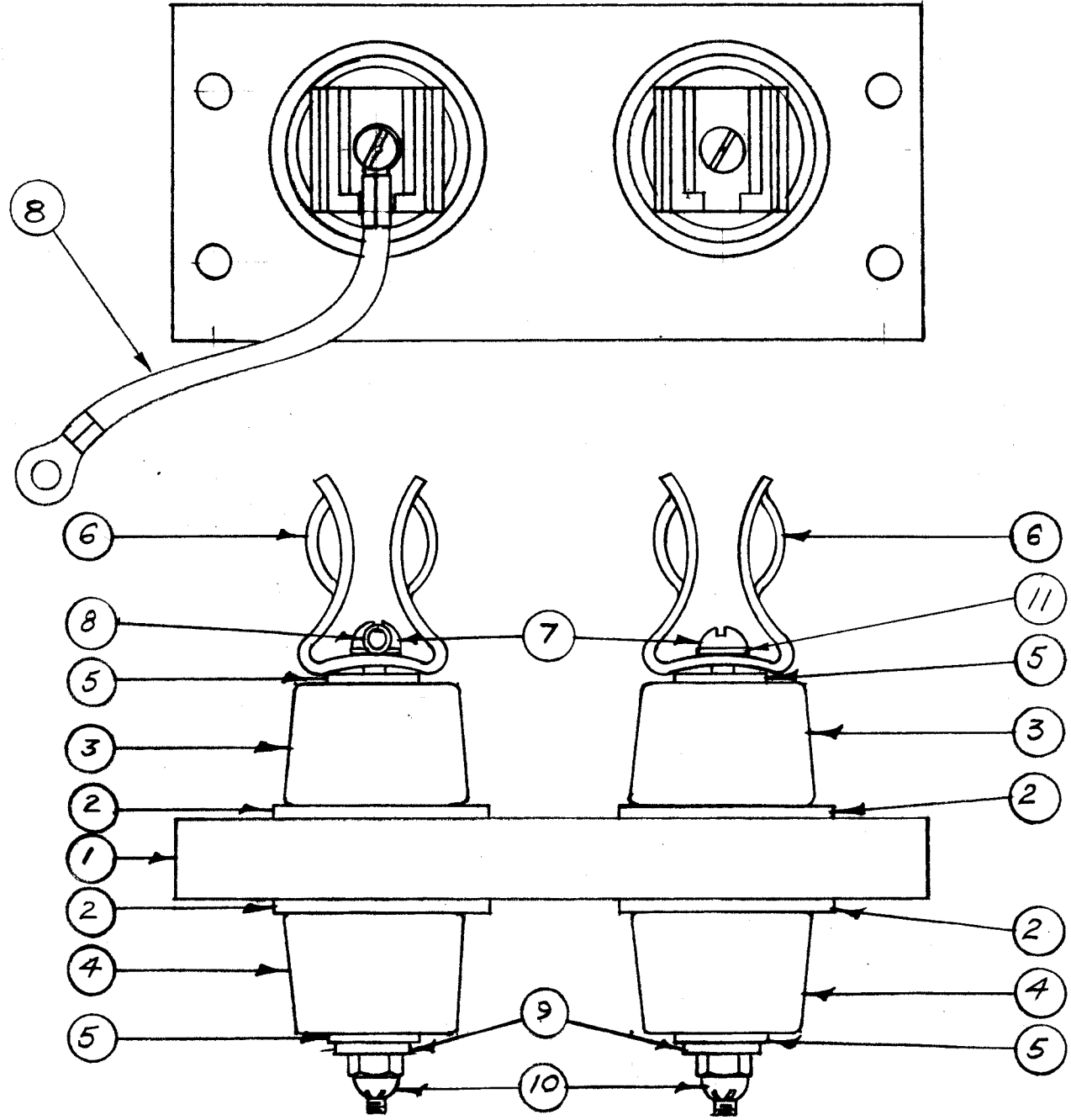


IF IT IS FOUND DESIRABLE TO CHANGE ANY TOLERANCE OR OTHER DETAIL SPECIFIED ON THIS DRAWING NOTIFY THE PURCHASER PROMPTLY.

MAXIMUM ALLOWABLE TOLERANCES HAVE BEEN DETERMINED AND DEVIATIONS WILL BE CAUSE FOR REJECTION. REMOVE ALL BURRS AND SHARP EDGES

A-700 A



2	11	LWE10MRC	WASHER, LOCK
2	10	SM-127-D-10-32	HEX. NUT
2	9	FW10HRC	WASHER, FLAT
1	8	A-731	STRAP, FUSE HOLDER
2	7	SCRS1032BC44	SCREW, MACH.
2	6	FH-102	CLIP, FUSE
4	5	WA-106-5	WASHER, FIBRE
2	4	NS-108-1	INSULATOR, STEATITE
2	3	NS-108-2	INSULATOR, STEATITE
4	2	GA-117	GASKET
1	1	PX-191	BRACER MOUNTS

REQ. ITEM	PART NO.	DESCRIPTION	SYMBOL
//		THE TECHNICAL MATERIEL CORP.	
STOCK SIZE		MAMARONECK. NEW YORK	
//		CONDENSER MOUNT	
MATERIAL		(LEFT SIDE - TAC-1)	
WEIGHT PER PC.		46 12-31-53	
TYPE & TEMPER		DRAWN	
//		ELEC. DES. APP.	
HEAT TREAT. SPEC.		CHECKED	
//		FINAL APPROVAL	
FINISH & SPEC. NO.		A-700 A	

A	2	ITEM 11 ADDED	11/23/54	1	P.B.	CSB	WCB
	1	ITEM 5 WAS WA-10-5					
ISSUE	ITEM	CHANGED FROM	DATE	CN. NO.	DRAFTS	CHECKER	ENG. APP.
TOLERANCES			SCALE: //				
ALL OTHERS	DEC. DIM. ±	DRILL, PUNCH, COMMERCIAL STOCK					
	FRAC. DIM. ±	SIZES AND MANUFACTURERS					
	ANGULAR DIM. ±	TOLERANCES ARE NOT INCLUDED.					
	1	TAC-1	132	A-723	1-25-54		
	AMT. PER UNIT	MODEL	PROJECT NO.	ASS'Y. NO.	DATE	USED ON	