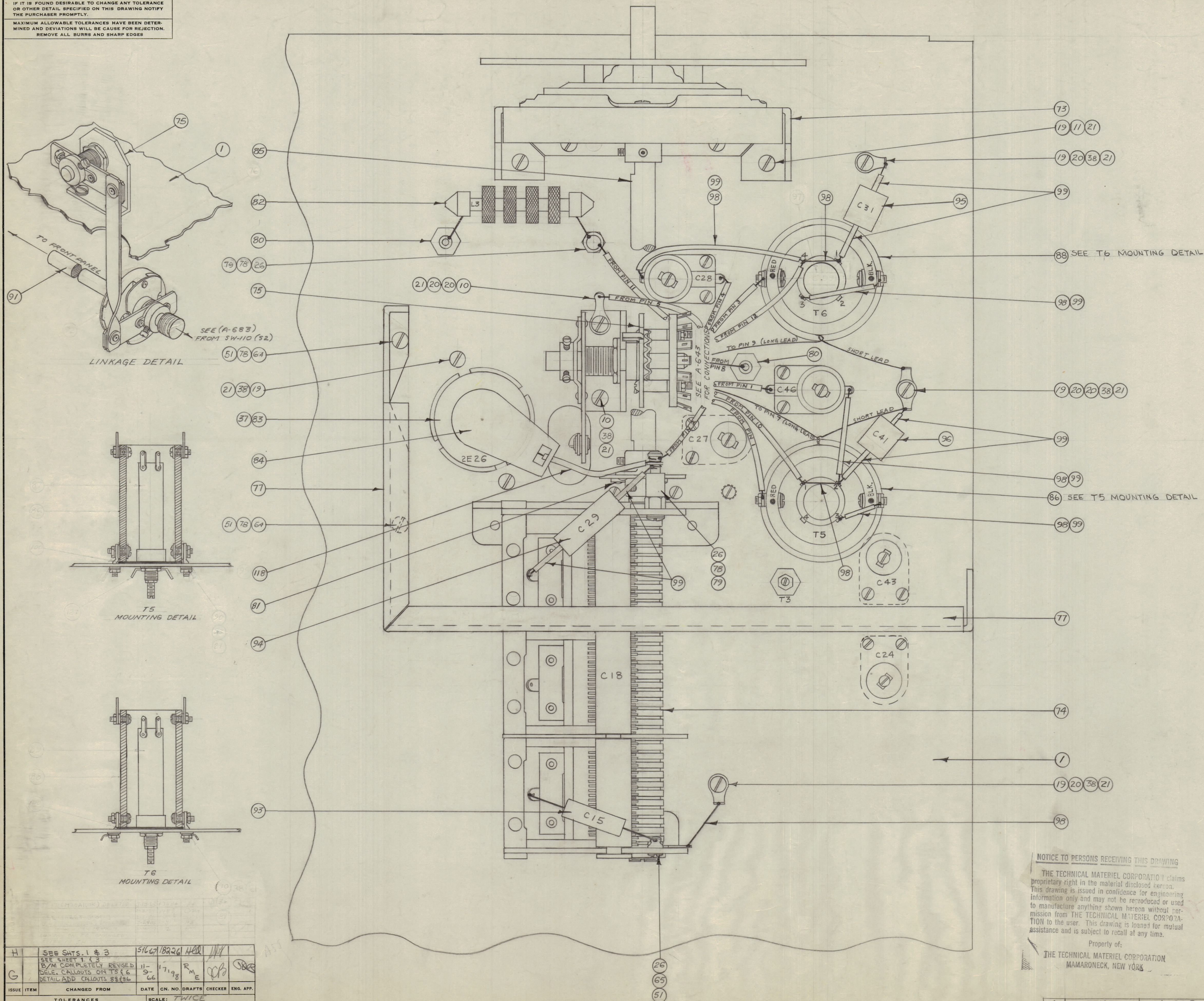


IF IT IS FOUND DESIRABLE TO CHANGE ANY TOLERANCE OR OTHER DETAIL SPECIFIED ON THIS DRAWING NOTIFY THE PURCHASER PROMPTLY.
 MAXIMUM ALLOWABLE TOLERANCES HAVE BEEN DETERMINED AND DEVIATIONS WILL BE CAUSE FOR REJECTION. REMOVE ALL BURRS AND SHARP EDGES



A-684H

100	DELETED		
X 99	PA-104-5-022	INSULATION, SLEEVING	BRN.
X 98	WL-100-7	WIRE, BUSS	SIZE 22
97	DELETED		
1 96	CM35F512603	CAP. FIXED, MICA	C41
1 95	CM30E152603	CAP. FIXED, MICA	C31
1 94	CM35F103F03	CAP. FIXED, MICA	C29
1 93	CM15C050J03M	CAP. FIXED, MICA	C15
92	DELETED		
1 91	A-683	SWITCH LINKAGE ASS'Y.	
1 90	FW06MRN	WASHER, FLAT	
89	DELETED		
1 88	A-753	TRANSFORMER ASS'Y.	T6
87	DELETED		
1 86	A-753	TRANSFORMER ASS'Y.	T5
1 85	FP-116	COND. EXTENSION SHAFT	
1 84	HB-102-2	PLATE, CAP	
1 83	2E26	TUBE, ELECTRON	V5
1 82	CL-104-1	CHOKE, R.F.	L3
1 81	MC-103-1	COUPLING, FLEX.	
2 80	TE-114-2	TERMINAL, FEED-THRU	
8 79	TE-102-2	TERMINAL, TURRET	
12 78	LW04MRN	LOCKWASHER, EXT.	
1 77	MS-446	SHIELD, CAPACITOR	
1 76	DELETED		
1 75	A-643	SWITCH, SUB-A 35'Y.	

NOTICE TO PERSONS RECEIVING THIS DRAWING
 THE TECHNICAL MATERIEL CORPORATION claims proprietary right in the material disclosed hereon. This drawing is issued in confidence for engineering information only and may not be reproduced or used to manufacture anything shown hereon without permission from THE TECHNICAL MATERIEL CORPORATION to the user. This drawing is loaned for mutual assistance and is subject to recall at any time.
 Property of:
 THE TECHNICAL MATERIEL CORPORATION
 MAMARONECK, NEW YORK

(TOP VIEW)

H	SEE SHITS 1 & 3	15/6/67	18226	HER		
G	SEE SHEET 1 & 3 B/M COMPLETELY REVISED DELE. CALLOUTS ON T5 & 6 DETAIL AND CALLOUTS 88 & 86	11-9-66	17198	RME		
ISSUE	ITEM	CHANGED FROM	DATE	CN. NO.	DRAFTS	CHECKER
		TOLERANCES		SCALE:	TWICE	
ALL DEC. DIM. ± OTHERS FRAC. DIM. ± ANGULAR DIM. ±		DRILL, PUNCH, COMMERCIAL STOCK SIZES AND MANUFACTURERS TOLERANCES ARE NOT INCLUDED.				

1	XFK	A-689	A 689	2-10-53
Rev.	MODEL	PROJECT NO.	ASS'Y. NO.	DATE
UNIT	USED ON			

THE TECHNICAL MATERIEL CORP. MAMARONECK, NEW YORK			
MAIN CHASSIS ASS'Y			
RF SECTION - XFK - PG. 2 OF 3			
MATERIAL	WEIGHT PER PC.	TYPE & TEMPER	HEAT TREAT. SPEC.
STOCK SIZE		FINISH & SPEC. NO.	
DRAWN		ELEC. DES. APP.	
CHECKED		MECH. DES. APP.	
FINAL APPROVAL		PAGE 2 OF 3	
A-684		H	