

IF IT IS FOUND DESIRABLE TO CHANGE ANY TOLERANCE OR OTHER DETAIL SPECIFIED ON THIS DRAWING NOTIFY THE PURCHASER PROMPTLY.

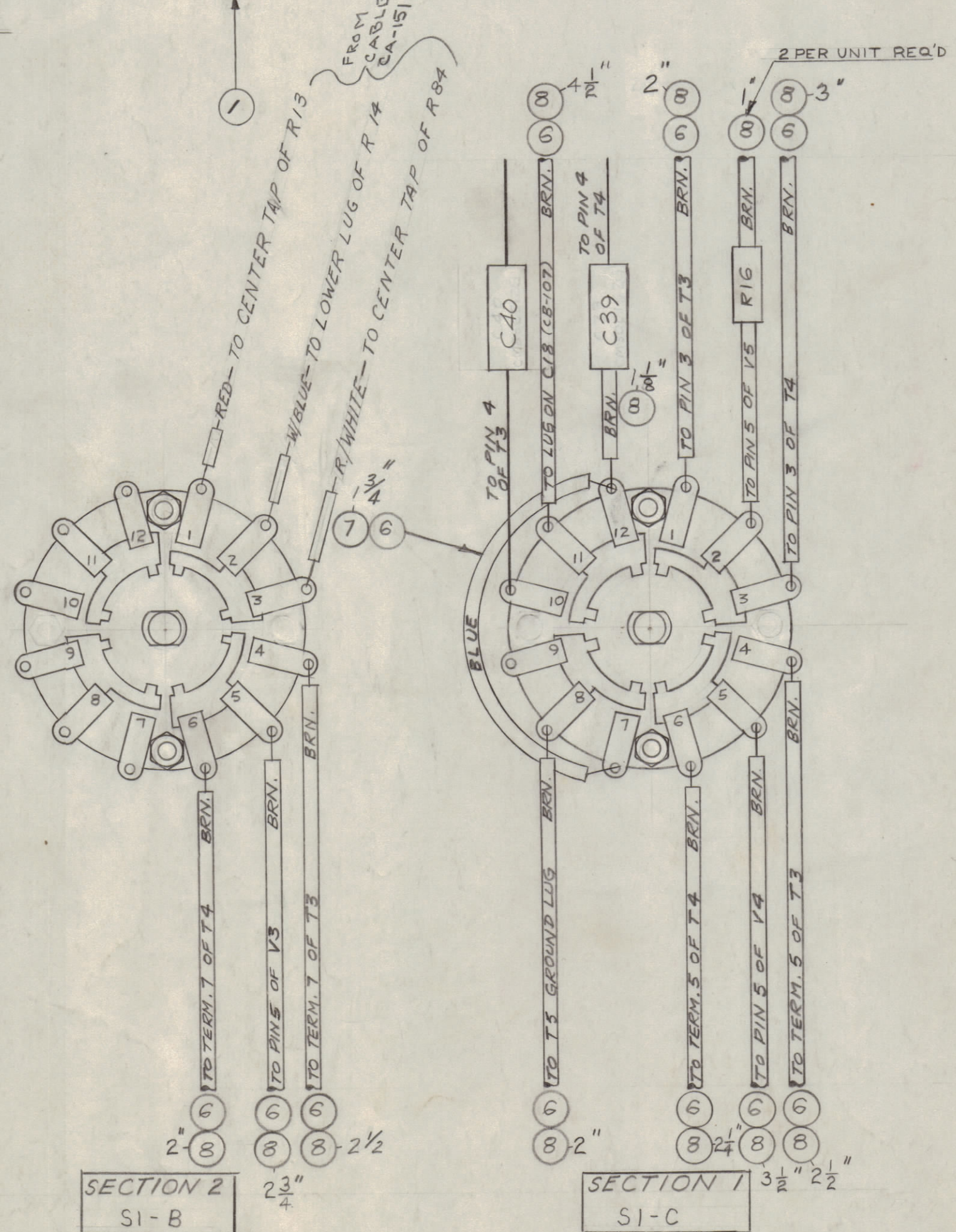
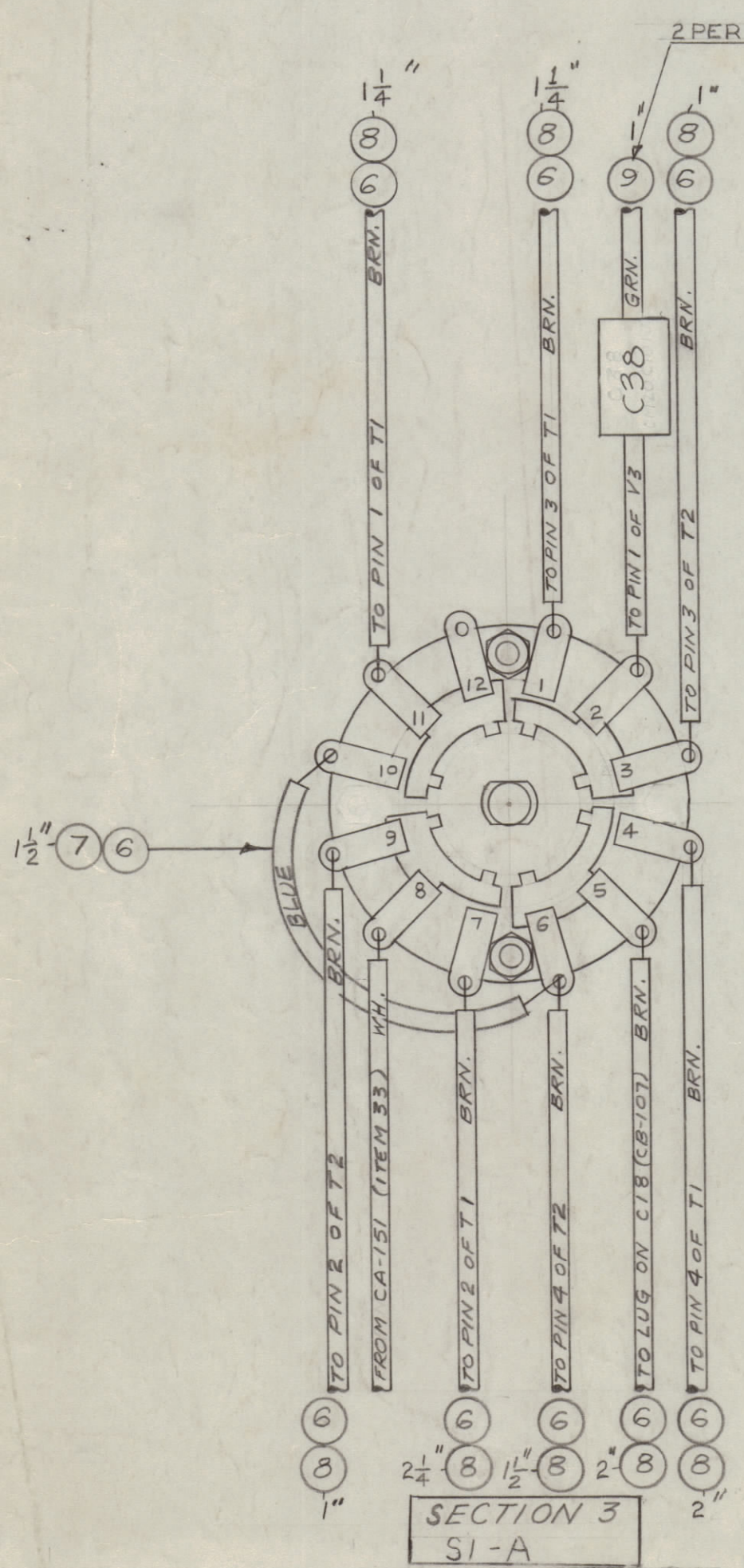
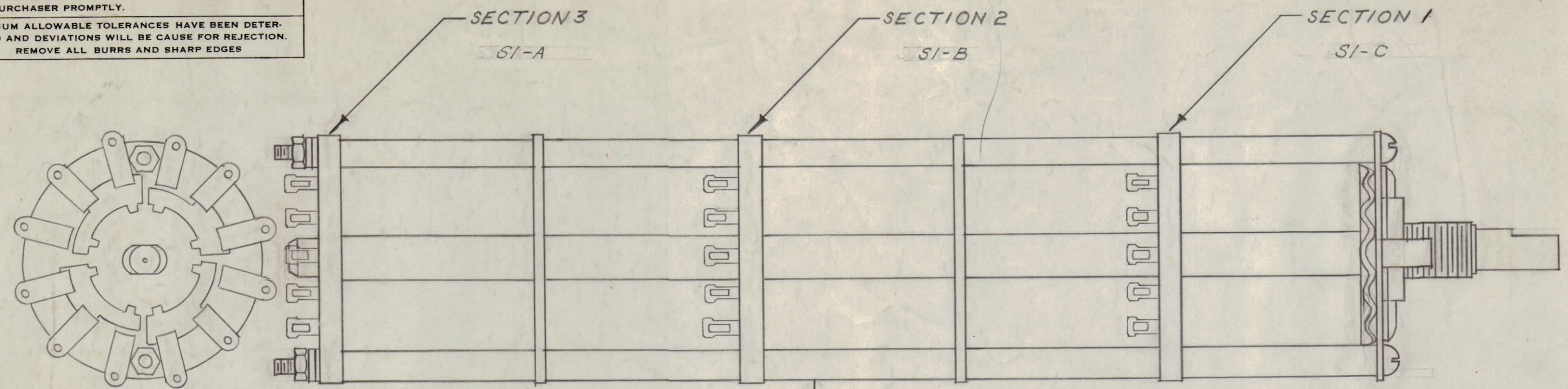
MAXIMUM ALLOWABLE TOLERANCES HAVE BEEN DETERMINED AND DEVIATIONS WILL BE CAUSE FOR REJECTION. REMOVE ALL BURRS AND SHARP EDGES

NOTICE TO PERSONS RECEIVING THIS DRAWING

THE TECHNICAL MATERIEL CORPORATION claims proprietary right in the material disclosed hereon. This drawing is issued in confidence for engineering information only and may not be reproduced or used to manufacture anything shown hereon without permission from THE TECHNICAL MATERIEL CORPORATION to the user. This drawing is loaned for mutual assistance and is subject to recall at any time.

Property of:

THE TECHNICAL MATERIEL CORPORATION  
MAMARONECK, NEW YORK



A-682 E

REF. DWGS.  
A-684  
A-689  
A-690

X	10.	BS-100	SOLDER, SOFT	
	9	PX-104-4-022	INSULATION, SLEEVING	GRN.
	8	PX-104-5-022	INSULATION, SLEEVING	BRN.
	7	PX-104-6-022	INSULATION, SLEEVING	BLUE
X	6	WL-100-7	WIRE, BUSS SIZE 22	
	5	RC20GF330J	RESISTOR, FIXED	R16
	4	CM35F512603	CAPACITOR, FIXED	C40
	3	CM30E152603	CAPACITOR, FIXED	C39
	2	CM15F101603	CAPACITOR, FIXED	C38
	1	SW-110	SWITCH, ROTARY	S1

REQ. ITEM	PART NO.	DESCRIPTION	SYMBOL
THE TECHNICAL MATERIEL CORP. MAMARONECK, NEW YORK			
SWITCH, SUB-ASS'Y.			
MATERIAL		WEIGHT PER PC.	
		S2	XFK
TYPE & TEMPER		16 2-26-54	
DRAWN		ELEC. DES. APP.	MECH. DES. APP.
HEAT TREAT. SPEC.		CHECKED	FINAL APPROVAL
FINISH & SPEC. NO.		A-682 E	

REF. DWGS.  
A-684  
A-689  
A-690  
Pg. 3 of 3

E	DELE. DEC PT 17, 28 69. CHG'D K TO J I.T.S. REVISED P/N 17-2, 3, 4, 4	11-11-66	17223	RME		
ISSUE ITEM	CHANGED FROM	DATE	CN. NO.	DRAFTS	CHECKER	ENG. APP.
TOLERANCES		SCALE:				
ALL OTHERS	DEC. DIM. ± FRAC. DIM. ± ANGULAR DIM. ±	DRILL, PUNCH, COMMERCIAL STOCK SIZES AND MANUFACTURERS TOLERANCES ARE NOT INCLUDED.				

1	XFK	A-683	2-26-54
AMT. PER UNIT	MODEL	PROJECT NO.	ASS'Y. NO.
USED ON			