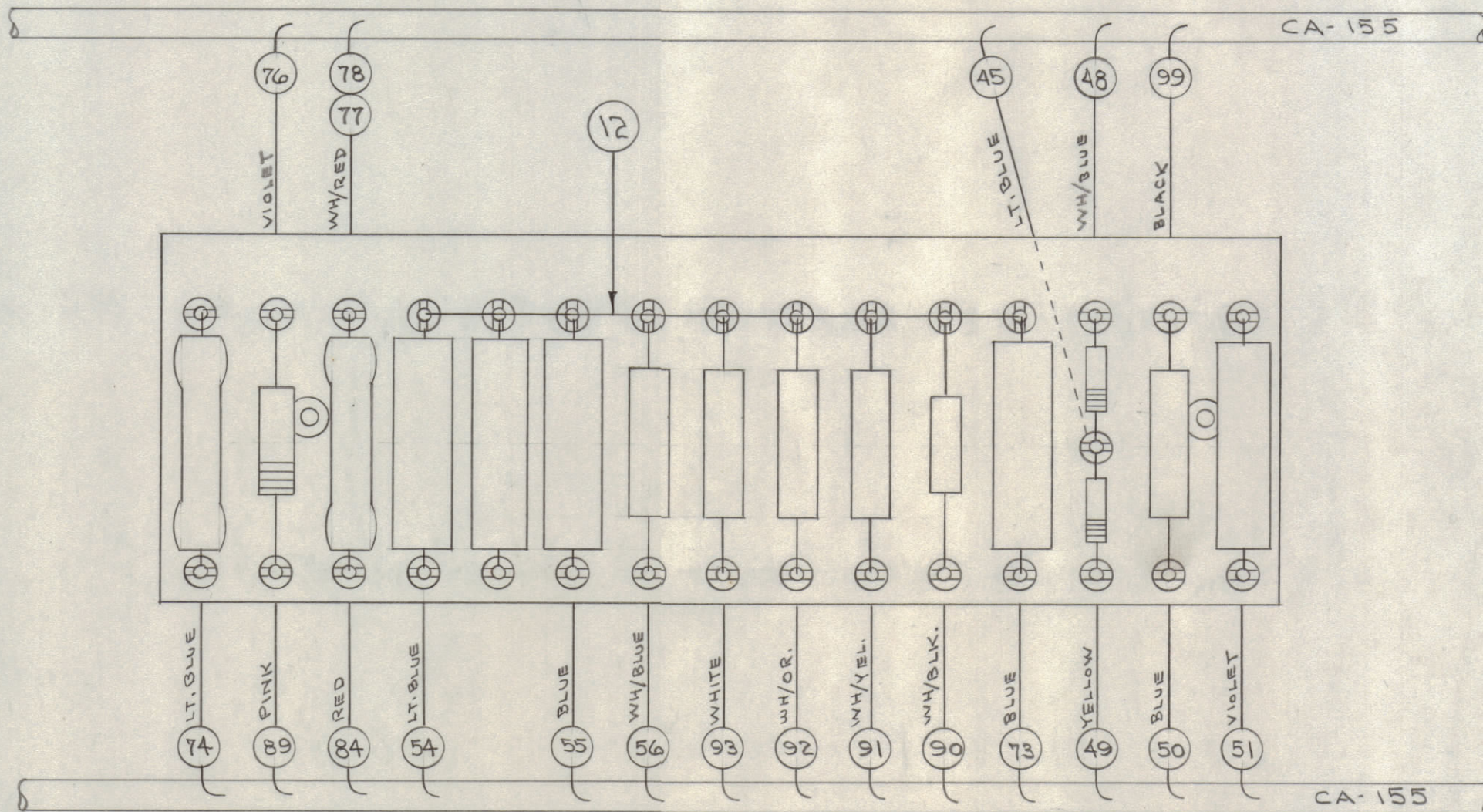
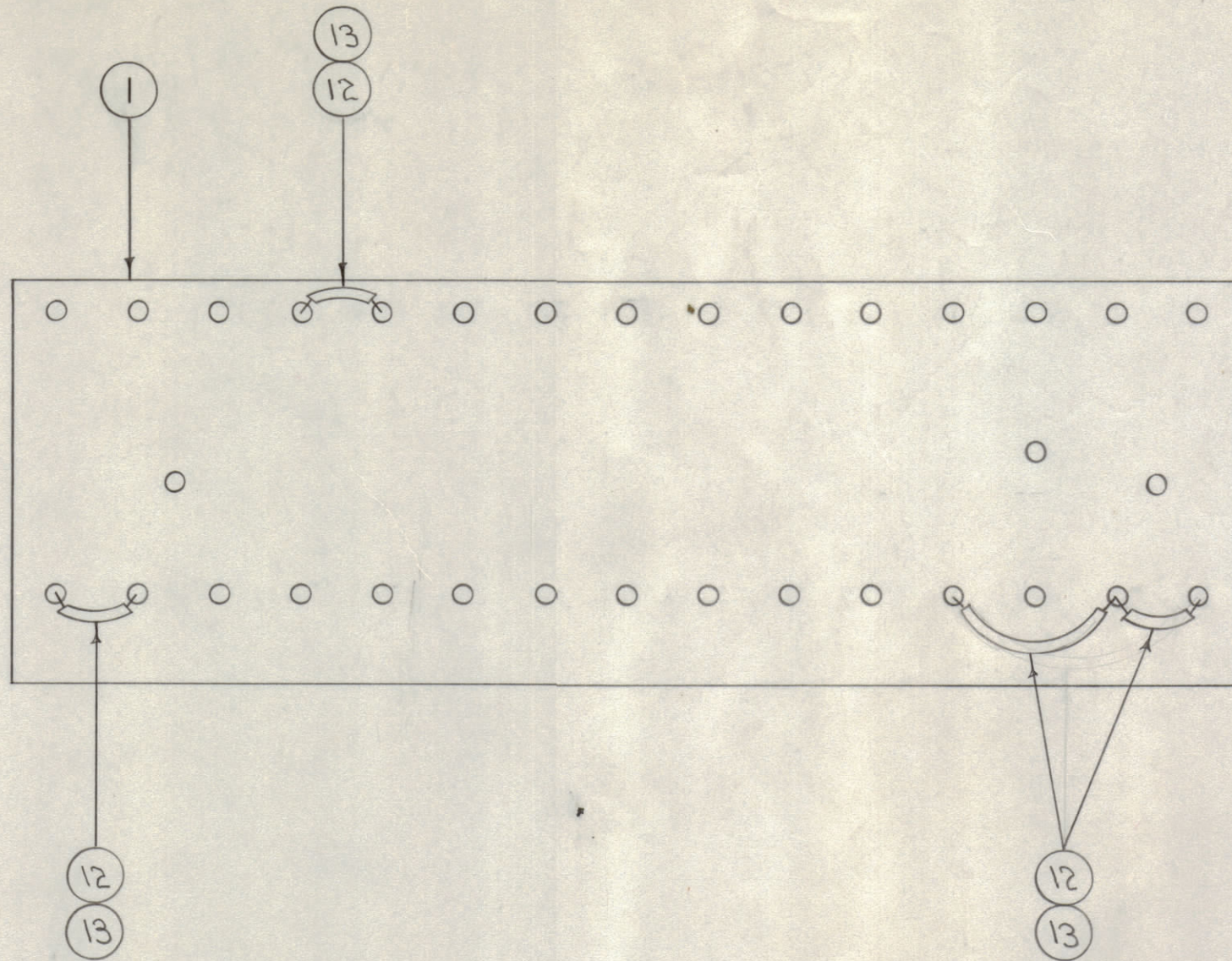


IF IT IS FOUND DESIRABLE TO CHANGE ANY TOLERANCE OR OTHER DETAIL SPECIFIED ON THIS DRAWING NOTIFY THE PURCHASER PROMPTLY.

MAXIMUM ALLOWABLE TOLERANCES HAVE BEEN DETERMINED AND DEVIATIONS WILL BE CAUSE FOR REJECTION. REMOVE ALL BURRS AND SHARP EDGES



NOTE THAT FOR CLARITY OF CONNECTIONS CABLE IS SHOWN SPLIT. WIRE NUMBERS USED CORRESPOND TO WIRE NOS. ON CABLE DRAWING CA-155

A-656

X	14	BS-100	SOLDER, SOFT	
X	13	PX-104-1-.022	INSULATION, SLEEVING (BLK.)	
X	12	WL-100-7	WIRE, BUSS BAR 22 GA.	
1	11	RW-109-30	RESISTOR, FIXED	R58
1	10	RC42GF102K		R57
1	9	RW-109-26		R56
1	8	RC20GF154K		R17
1	7	RC20GF823K		R16
1	6	CM20A501K	CAPACITOR, FIXED	C19
1	5	CN-100-9		C18
2	4	CN-100-1		C35 C16
2	3	CN-100-13		C17 C13
5	2	CN-100-3		
1	1	A-372	TERM. BD. NO. 2 SUB ASSY.	

C 12
C 15
C 32
C 33
C 3A

ISSUE	ITEM	CHANGED FROM	DATE	CN. NO.	DRAFTS	CHECKER	ENG. APP.
TOLERANCES		SCALE: 1/8"					
ALL OTHERS	DEC. DIM. ± FRAC. DIM. ± ANGULAR DIM. ±	-DRILL, PUNCH, COMMERCIAL STOCK SIZES AND MANUFACTURERS TOLERANCES ARE NOT INCLUDED.					

1	DCU-1	268		1-27-54
REP. PER UNIT	MODEL	PROJECT NO.	ASSY. NO.	DATE

THE TECHNICAL MATERIEL CORP.
MAMARONECK, NEW YORK

TERM. BD. NO. 2 ASSEMBLY
DCU-1

CD.D. 1-27-54

DRAWN: HOG
ELEC. DES. APP. [Signature]
MECH. DES. APP. [Signature]

CHECKED: [Signature]
FINAL APPROVAL: [Signature]

FINISH & SPEC. NO. A-656