

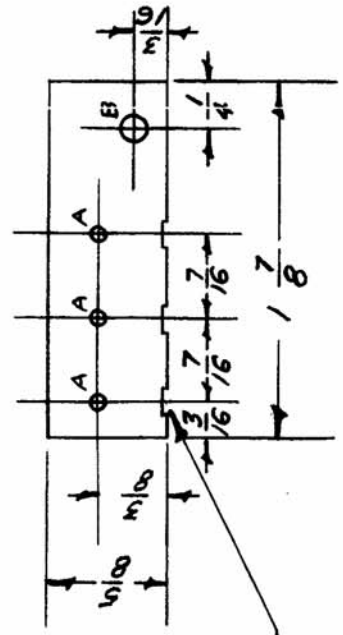
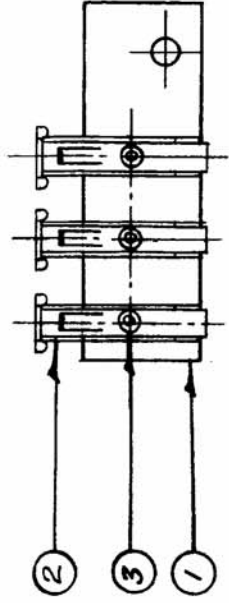
IF IT IS FOUND DESIRABLE TO CHANGE ANY TOLERANCE OR OTHER DETAIL SPECIFIED ON THIS DRAWING NOTIFY THE PURCHASER PROMPTLY.

MAXIMUM ALLOWABLE TOLERANCES HAVE BEEN DETERMINED AND DEVIATIONS WILL BE CAUSE FOR REJECTION. REMOVE ALL BURRS AND SHARP EDGES

A-649

USED ON

AMT. PER UNIT	MODEL	PROJECT NO.	ASSY. NO.	DATE
1	DDR-2		CA-101	1-25-54



1/32 DEEP X 1/8 WIDE  
(3 REQ.)

MACHINING PLAN

A = #51 DR. (.067) 3 REQ.  
B = #27 DR. (.144) 1 REQ.

3	EY-100-4	EYELET	
3	TE-136	LUG	
1	PX-206	BOARD (NO DRAWING)	
REQ. ITEM	PART NO.	DESCRIPTION	SYMBOL
3/32	THK.	THE TECHNICAL MATERIEL CORP. MAMARONECK. NEW YORK	
STOCK SIZE		FANNING STRIP BOARD	
PHENOLIC		ASSEMBLY	
MATERIAL	WEIGHT PER PC.		
XXP			
TYPE & TEMPER			
		16 1-25-54	
HEAT TREAT. SPEC.		DRAWN	MECH. DES. APP.
		CHECKED	
BLACK			FINAL APPROVAL
FINISH & SPEC. NO.			A-649

ISSUE ITEM	CHANGED FROM	DATE	CN. NO.	DRAFTS	CHECKER	ENG. APP.
TOLERANCES						
SCALE FULL						
DRILL, PUNCH, COMMERCIAL STOCK SIZES AND MANUFACTURERS TOLERANCES ARE NOT INCLUDED.						
ALL	DEC. DIM. ±					
OTHERS	FRAC. DIM. ±					
	ANGULAR DIM. ±					