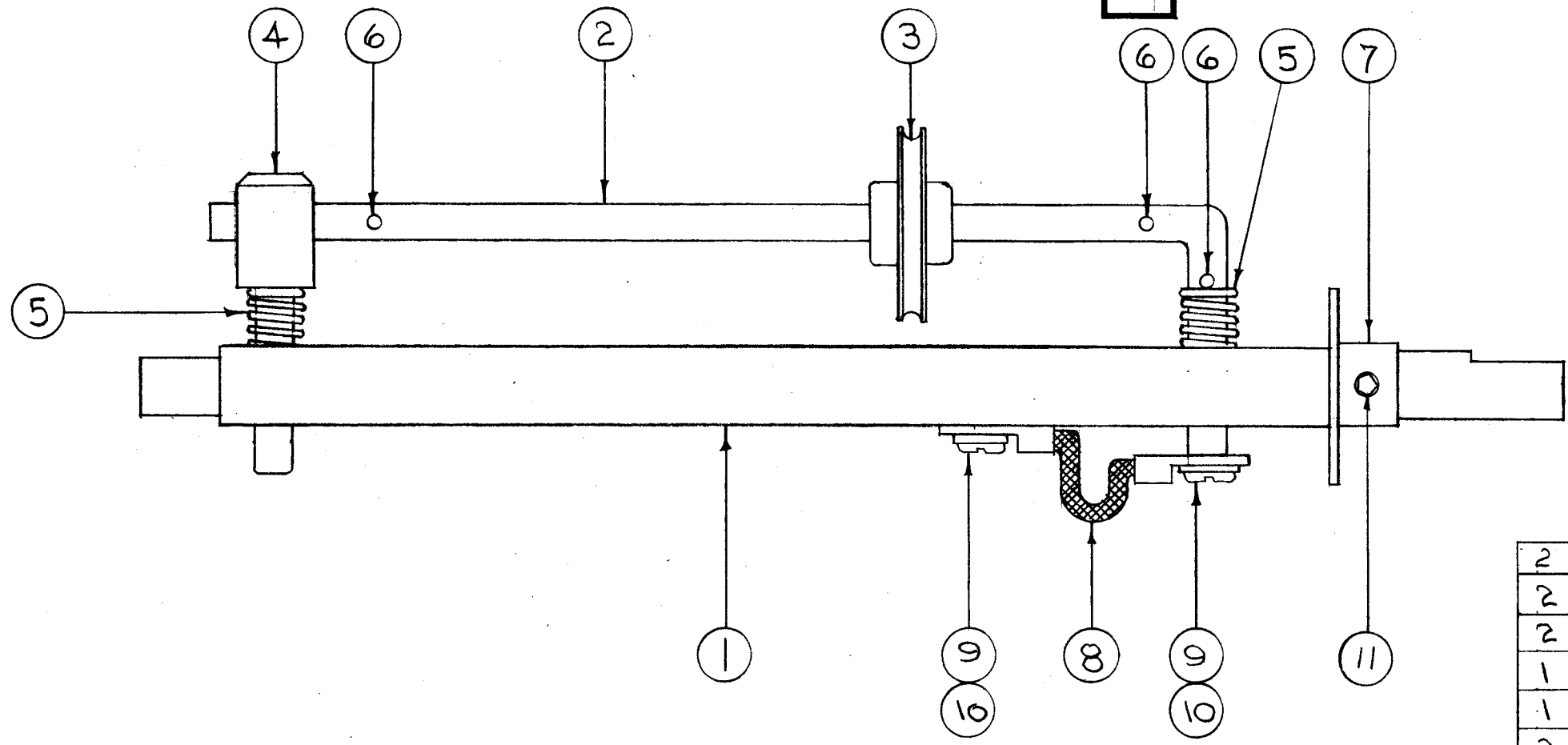


IF IT IS FOUND DESIRABLE TO CHANGE ANY TOLERANCE OR OTHER DETAIL SPECIFIED ON THIS DRAWING NOTIFY THE PURCHASER PROMPTLY.

MAXIMUM ALLOWABLE TOLERANCES HAVE BEEN DETERMINED AND DEVIATIONS WILL BE CAUSE FOR REJECTION. REMOVE ALL BURRS AND SHARP EDGES

A-646 B



2	11	AN565-D-8H2	SCREW, HEADLESS SET
2	10	LWE06MRC	WASHER, LOCK.
2	9	SCBS0632BC3	SCREW, MACHINE
1	8	A-647	GROUND LEAD ASSY.
1	7	PM-254	CONTACT BUSHING
3	6	PN 92-0625-10	PIN, ROLL
2	5	SP-116	SPRING
1	4	PX-197	CONNECTING ROD
1	3	PM-251	CONTACT WHEEL
1	2	PM-255	WHEEL SHAFT
1	1	PM-256	COUNTER SHAFT

REQ.	ITEM	PART NO.	DESCRIPTION	SYMBOL
#				
STOCK SIZE			#	
MATERIAL		WEIGHT PER PC.		
#				
TYPE & TEMPER				
#				
HEAT TREAT. SPEC.				
#				
FINISH & SPEC. NO.				

THE TECHNICAL MATERIEL CORP.
MAMARONECK, NEW YORK

CONTACT WHEEL/SHAFT ASSY.

TAC-1

C.D.D. 12-28-58

DRAWN: *JAD* ELEC. DES. APP. *APB* MECH. DES. APP. *WJE*

CHECKED: *APB* FINAL APPROVAL: *WJE*

A-646 B

B	1	IT.6 WAS PN-109-3	8.10.64	12061	WB	11.	<i>[Signature]</i>
A	1	ITEM 11 ADDED	11-23-54	1	P.B.	<i>[Signature]</i>	<i>[Signature]</i>
ISSUE	ITEM	CHANGED FROM	DATE	CN. NO.	DRAFTS	CHECKER	ENG. APP.

TOLERANCES SCALE: $\frac{1}{16}$

ALL OTHERS DEC. DIM. \pm FRAC. DIM. \pm ANGULAR DIM. \pm

DRILL, PUNCH, COMMERCIAL STOCK SIZES AND MANUFACTURERS TOLERANCES ARE NOT INCLUDED.

2	TAC-1	132	A-779	1-26-54
REQ PER UNIT	MODEL	PROJECT NO.	ASS'Y. NO.	DATE

USED ON